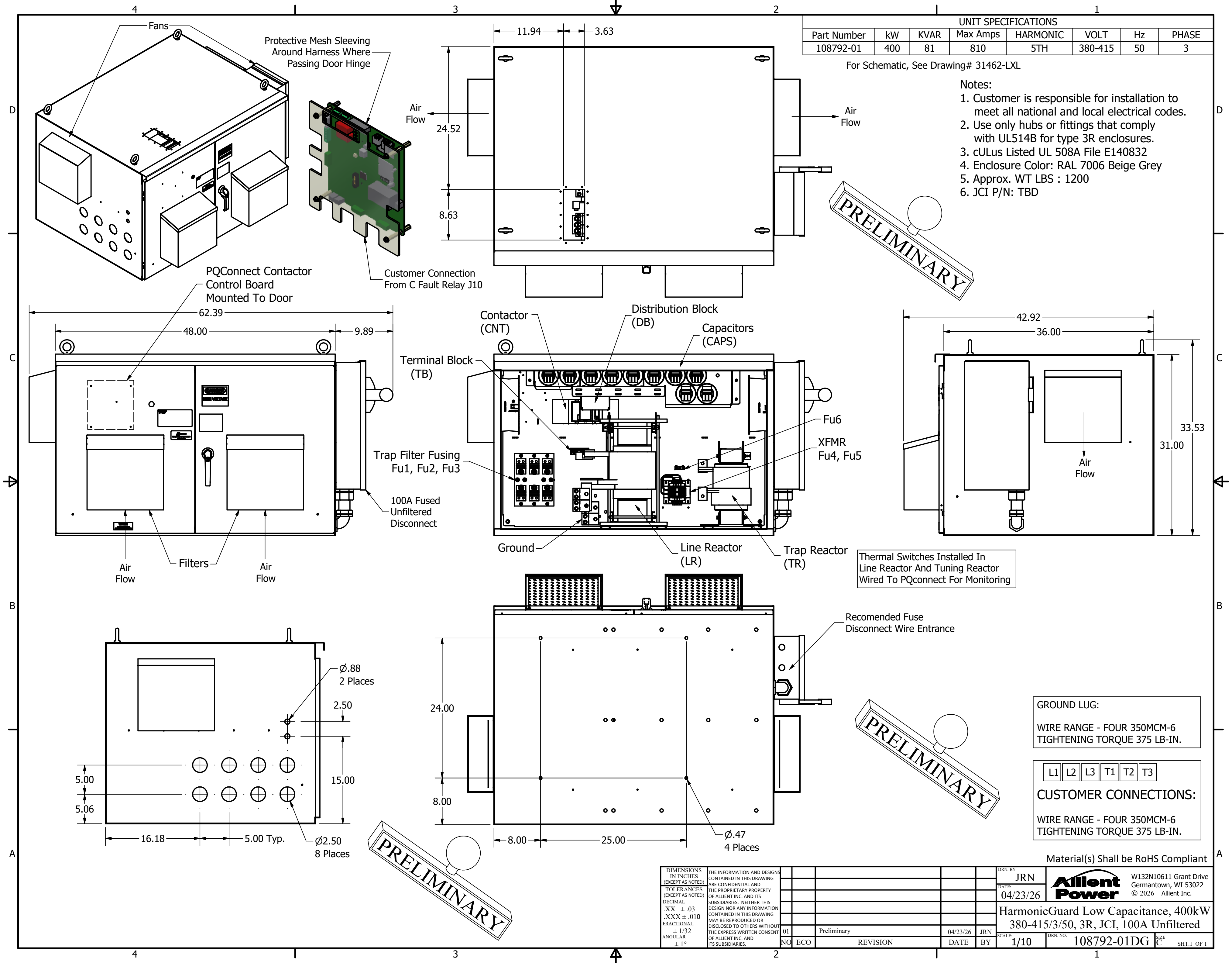


UNIT SPECIFICATIONS							
Part Number	kW	KVAR	Max Amps	HARMONIC	VOLT	Hz	PHASE
108792-01	400	81	810	5TH	380-415	50	3

For Schematic, See Drawing# 31462-LXL

- Notes:
1. Customer is responsible for installation to meet all national and local electrical codes.
  2. Use only hubs or fittings that comply with UL514B for type 3R enclosures.
  3. cULus Listed UL 508A File E140832
  4. Enclosure Color: RAL 7006 Beige Grey
  5. Approx. WT LBS : 1200
  6. JCI P/N: TBD



**PRELIMINARY**

Thermal Switches Installed In Line Reactor And Tuning Reactor Wired To PQconnect For Monitoring

**PRELIMINARY**

GROUND LUG:  
WIRE RANGE - FOUR 350MCM-6  
TIGHTENING TORQUE 375 LB-IN.

CUSTOMER CONNECTIONS:  
WIRE RANGE - FOUR 350MCM-6  
TIGHTENING TORQUE 375 LB-IN.

Material(s) Shall be RoHS Compliant

DIMENSIONS IN INCHES (EXCEPT AS NOTED) TOLERANCES (EXCEPT AS NOTED) DECIMAL .XX ± .03 .XXX ± .010 FRACTIONAL ± 1/32 ANGULAR ± 1°	THE INFORMATION AND DESIGNS CONTAINED IN THIS DRAWING ARE CONFIDENTIAL AND THE PROPRIETARY PROPERTY OF ALLIENT INC. AND ITS SUBSIDIARIES. NEITHER THIS DESIGN NOR ANY INFORMATION CONTAINED IN THIS DRAWING MAY BE REPRODUCED OR DISCLOSED TO OTHERS WITHOUT THE EXPRESS WRITTEN CONSENT OF ALLIENT INC. AND ITS SUBSIDIARIES.	DRN. BY	JRN		W132N10611 Grant Drive Germantown, WI 53022 © 2026 Allient Inc.
		DATE	04/23/26		
01 Preliminary 04/23/26 JRN		HarmonicGuard Low Capacitance, 400kW 380-415/3/50, 3R, JCI, 100A Unfiltered		SCALE	1/10
NO ECO		REVISION	DATE	BY	DRN. NO.
					108792-01DG
					SIZE C
					SHT.1 OF 1