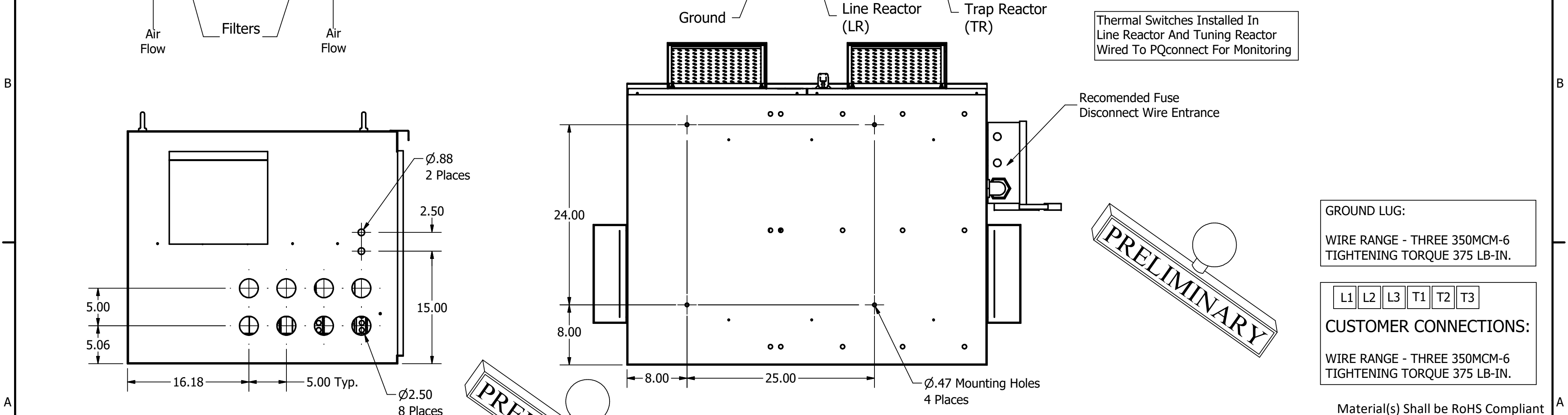
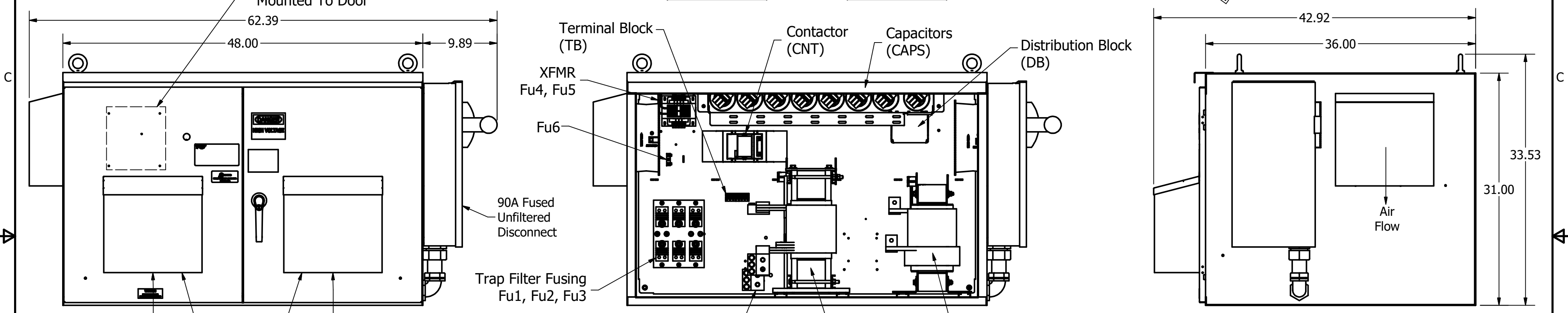
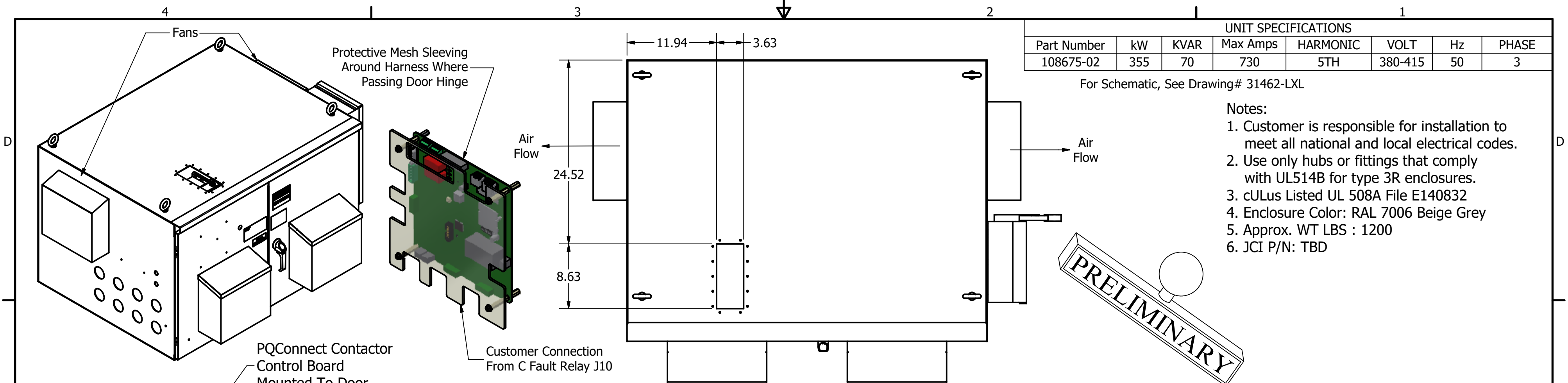


UNIT SPECIFICATIONS							
Part Number	kW	KVAR	Max Amps	HARMONIC	VOLT	Hz	PHASE
108675-02	355	70	730	5TH	380-415	50	3

For Schematic, See Drawing# 31462-LXL

- Notes:
1. Customer is responsible for installation to meet all national and local electrical codes.
  2. Use only hubs or fittings that comply with UL514B for type 3R enclosures.
  3. cULus Listed UL 508A File E140832
  4. Enclosure Color: RAL 7006 Beige Grey
  5. Approx. WT LBS : 1200
  6. JCI P/N: TBD



GROUND LUG:  
WIRE RANGE - THREE 350MCM-6  
TIGHTENING TORQUE 375 LB-IN.

L1 L2 L3 T1 T2 T3  
CUSTOMER CONNECTIONS:  
WIRE RANGE - THREE 350MCM-6  
TIGHTENING TORQUE 375 LB-IN.

Material(s) Shall be RoHS Compliant

DIMENSIONS IN INCHES (EXCEPT AS NOTED) TOLERANCES (EXCEPT AS NOTED) DECIMAL .XX ± .03 .XXX ± .010 FRACTIONAL ± 1/32 ANGULAR ± 1°	THE INFORMATION AND DESIGNS CONTAINED IN THIS DRAWING ARE CONFIDENTIAL AND THE PROPRIETARY PROPERTY OF ALLIENT INC. AND ITS SUBSIDIARIES. NEITHER THIS DESIGN NOR ANY INFORMATION CONTAINED IN THIS DRAWING MAY BE REPRODUCED OR DISCLOSED TO OTHERS WITHOUT THE EXPRESS WRITTEN CONSENT OF ALLIENT INC. AND ITS SUBSIDIARIES.	DRN. BY	JRN		W132N10611 Grant Drive Germantown, WI 53022 © 2026 Allient Inc.
		DATE	04/20/26		
		SCALE	1/10		
NO	ECO	REVISION	DATE	BY	DRN. NO.
01		Preliminary	04/20/26	JRN	108675-02DG
					HarmonicGuard Low Capacitance, 355kW 380-415/3/50, 3R, JCI, 90A Unfiltered
					SIZE C SHT.1 OF 1

PRELIMINARY

PRELIMINARY

PRELIMINARY