

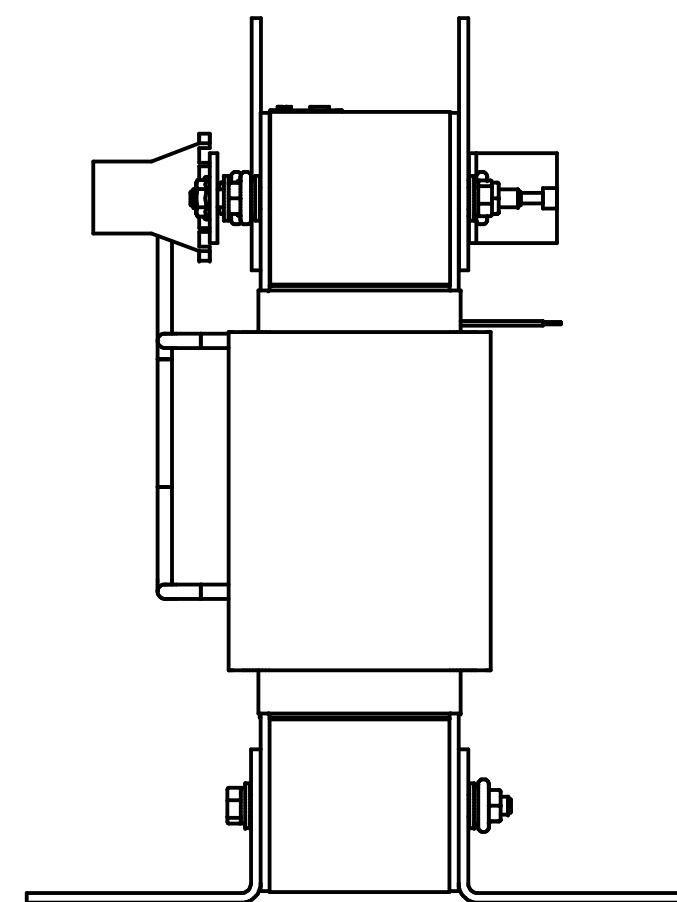
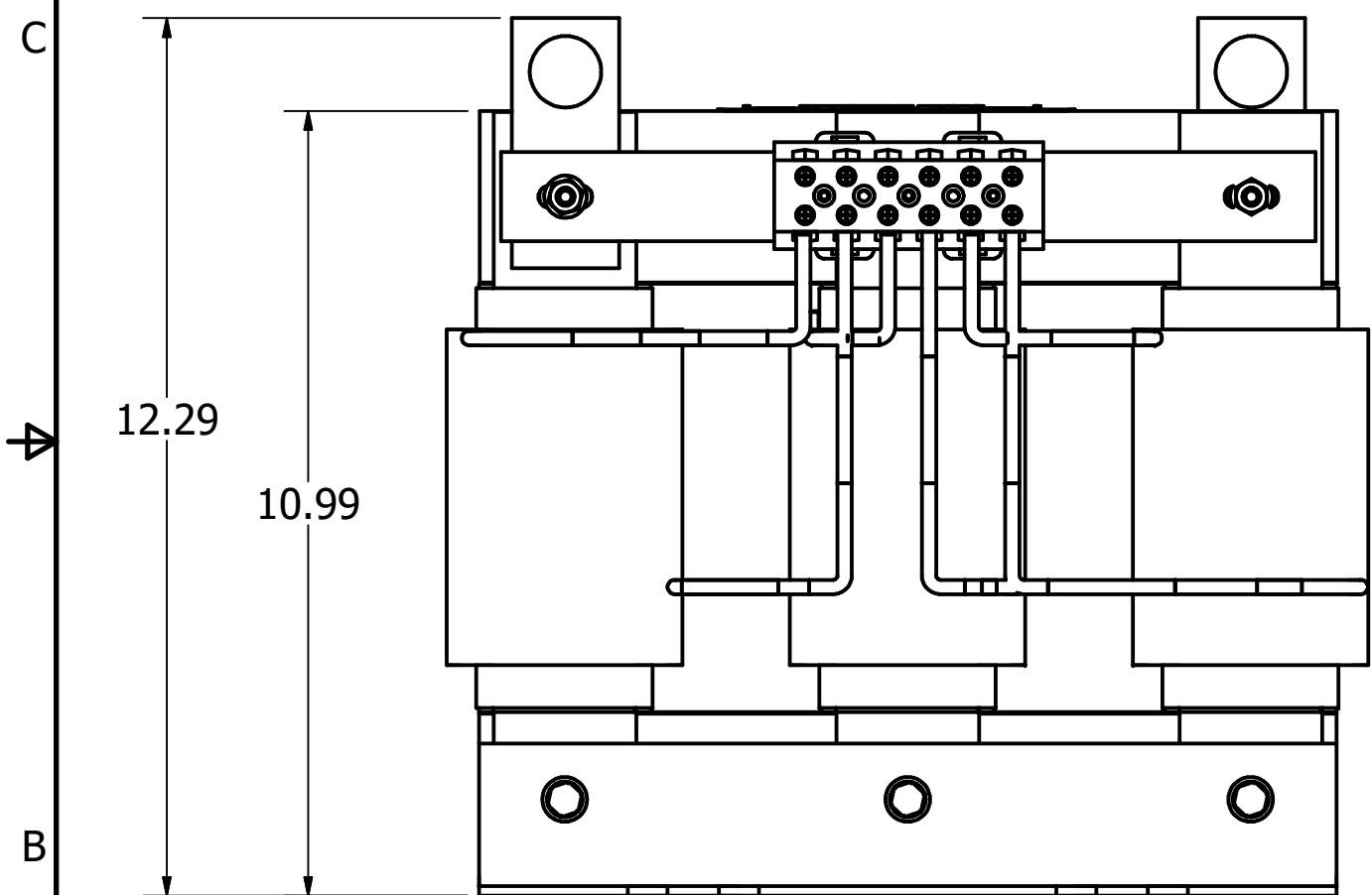
Wire Range: 18 AWG To 4 AWG.
Torque: 20 LB-IN (2.3 Nm)

Switch Opens on Temperature Rise
Contact Rating: 6A @ 120 VAC

Wire Range: 1- 4 AWG. Torque : 35 LBS-IN (3.95 Nm)
6- 14 AWG. Torque : 30 LBS-IN (3.39 Nm)
16- 20 AWG. Torque : 25 LBS-IN (2.28 Nm)
22 AWG. Torque : 20 LBS-IN (2.26 Nm)

(Customer Connections)
Markings On Terminal Block
For Reference Only.

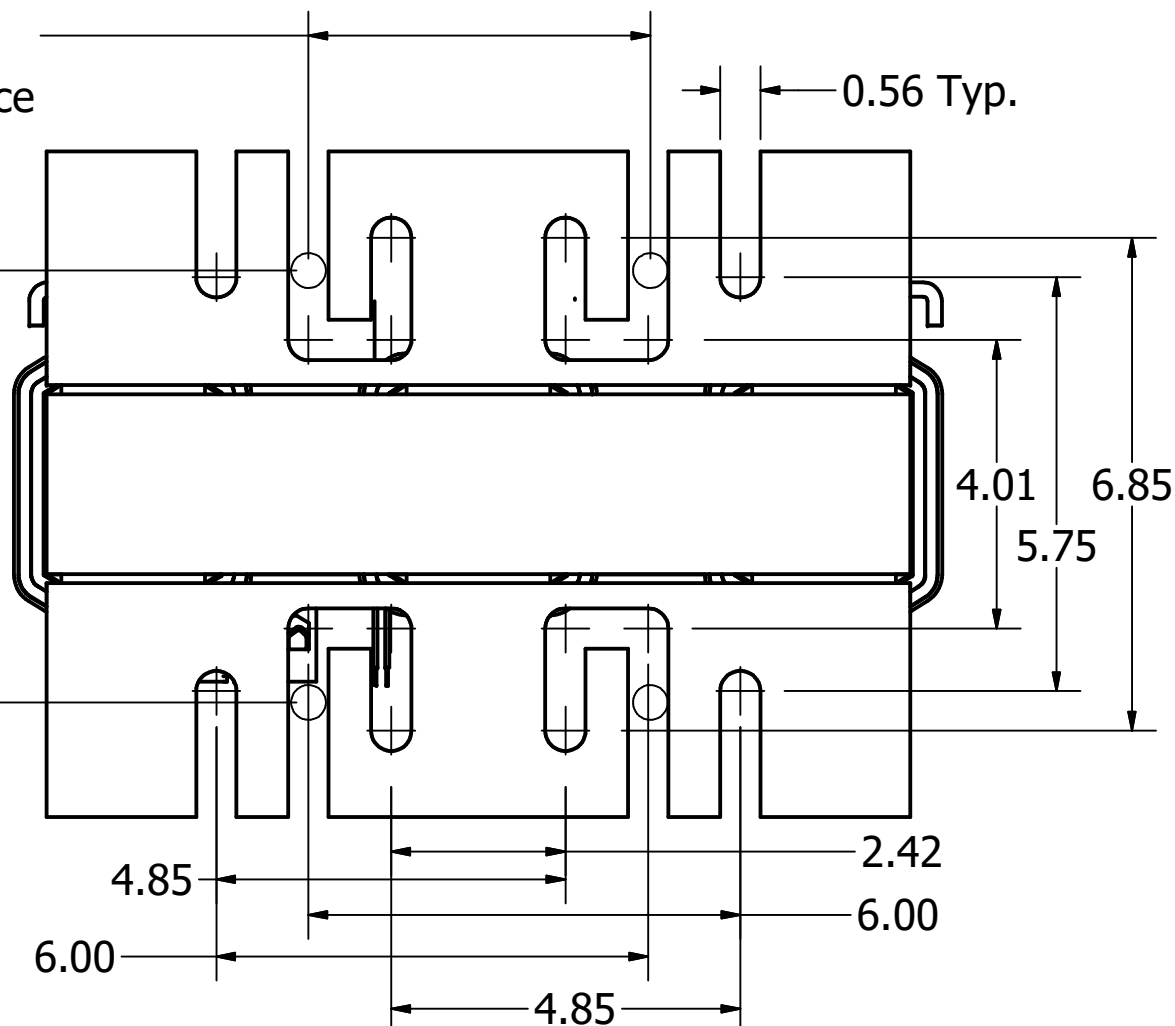
TCI Part Number	Rated Amps (A)	Rated Voltage (V)	Hz	---uH ±5%	Approx Weight (LBS)
KLRUL55CTBMG	55	600	60	1090	88



Suggested 4.75"
Mounting Distance

0.56 Typ.

Suggested
6.00
Mounting
Distance



TCI
TCI, LLC
Germantown, WI, USA.
transcoll.com
800-824-8282

(800) 824-8282 transcoll.com

KLRUL Reactor
KLRUL— Motor Amps —
3PH, 50/60Hz, —V Rated, 600V Max, —A Max, RoHS
40C Amb Max
Use 75C CU conductors only, Term Torque—lb-in

UL LISTED **CE**
3RD CONT. EQ. MARK

Notes:

1. UL file number: cULus Listed File E116124.
2. KLR Reactors Comply With The Thermal and Altitude Standards Set Forth by NEMA ST20-1992.
3. Material(s) Shall be RoHS Compliant
4. Customer Is Responsible For Installation To Meet All National And Local Electrical Codes.

				TOLERANCES (EXCEPT AS NOTED)		TCI W132 N10611 Grant Drive Germantown, WI 53022	
				DECIMAL			
				.XX ± .03	KLRUL, 55A, 600V, Terminal Block Reactor Drawing, UL Listed	DRN BY JRN	DATE 03/27/20
				.XXX ± .010			
				FRACTIONAL ± 1/32			
A	As Designed	03/27/20	JRN	ANGULAR ± 1°	SCALE: 3/8	APRVD:	108525DG
NO	REVISION	DATE	BY				SIZE C