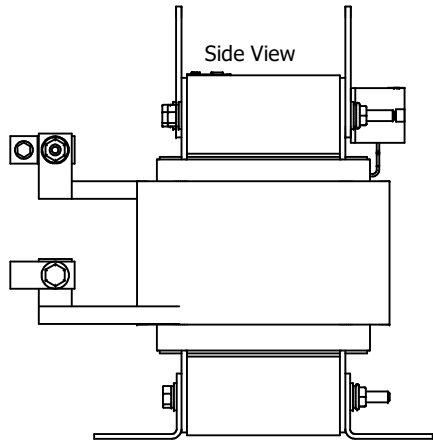
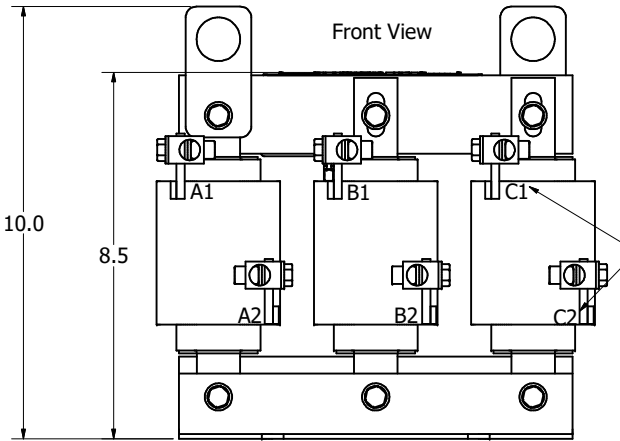
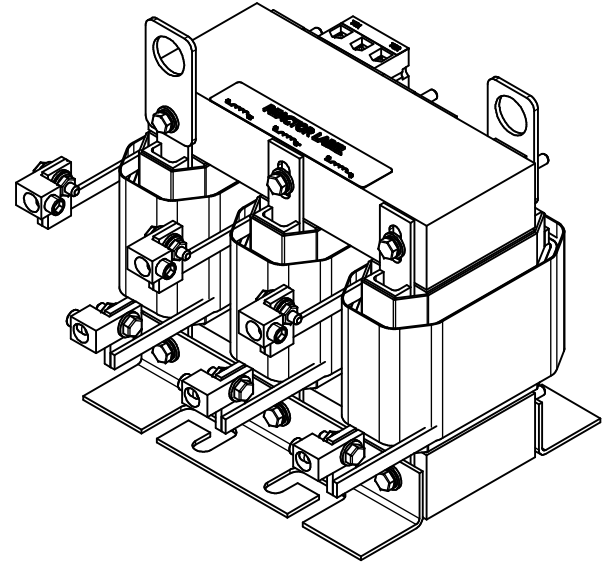
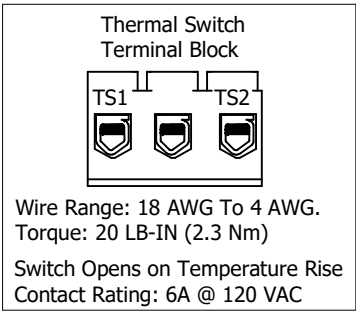
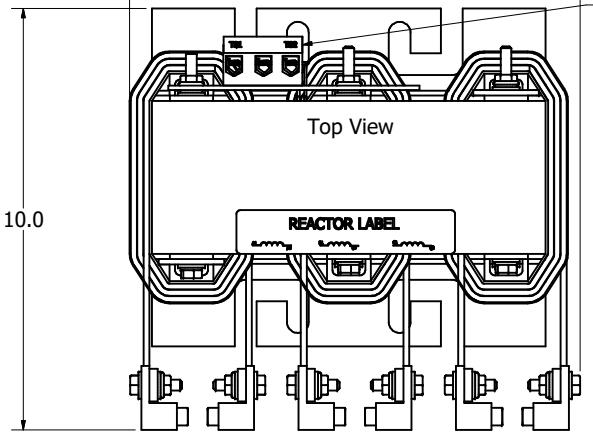
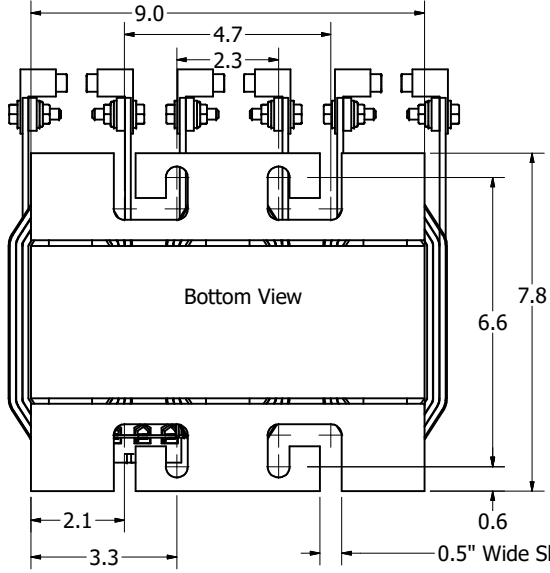


TCI Part Number	Rated Amps (A)	Rated Voltage (V)	Hz	±uH	Approx Weight (LBS)	Attached Lug Kit
KLRUL65APTMG	65	480	60	735	71	SLK10



Markings on coil for reference only.

Wire Range	Tightening Torque
2/0 - 3 AWG	50 Lbs-In (5.6 N-m)
4 AWG - 6 AWG	45 Lbs-In (5.1 N-m)
8 AWG	40 Lbs-In (4.5 N-m)
10 AWG - 14 AWG	35 Lbs-In (4.0 N-m)



TCI (800) 824-8282 transcoll.com
 KLRUL Reactor
 KLRUL — Motor Amps —
 3PH, 50/60Hz, —V Rated, 600V Max, —A Max, RoHS
 40C Amb Max
 Use 75C CU conductors only, Term Torque —lb-in

- Notes:
- UL file number: cULus Listed File E116124.
 - KLR Reactors Comply With The Thermal and Altitude Standards Set Forth by NEMA ST20-1992.
 - Material(s) Shall be RoHS Compliant
 - Customer Is Responsible For Installation To Meet All National And Local Electrical Codes.

THE INFORMATION AND DESIGNS CONTAINED IN THIS DRAWING ARE CONFIDENTIAL AND THE PROPRIETARY PROPERTY OF ALLIED MOTION TECHNOLOGIES INC. AND ITS SUBSIDIARIES. NEITHER THIS DESIGN NOR ANY INFORMATION CONTAINED IN THIS DRAWING MAY BE REPRODUCED OR DISCLOSED TO OTHERS WITHOUT THE EXPRESS WRITTEN CONSENT OF ALLIED MOTION TECHNOLOGIES INC. AND ITS SUBSIDIARIES.				TOLERANCES (EXCEPT AS NOTED) DECIMAL .XX ± .03 .XXX ± .010				W132N10611 (Rev 11/16) Germantown, WI 53022 © 2024 TCI, LLC An <i>Optical Motion Systems</i> Company Sinewave Reactor, UL Listed 480V, 65A, 3 Phase	
B	6577 Update Termination	2/20/2024	DSW	FRACATIONAL	± 1/32	DRN BY	DATE: 02/28/20		
A	As Designed	02/28/20	JRN	ANGULAR	± 1°	SCALE:	1/2.2		
NO	REVISION	DATE	BY	± 1°	SCALE:	1/2.2	108473DG		