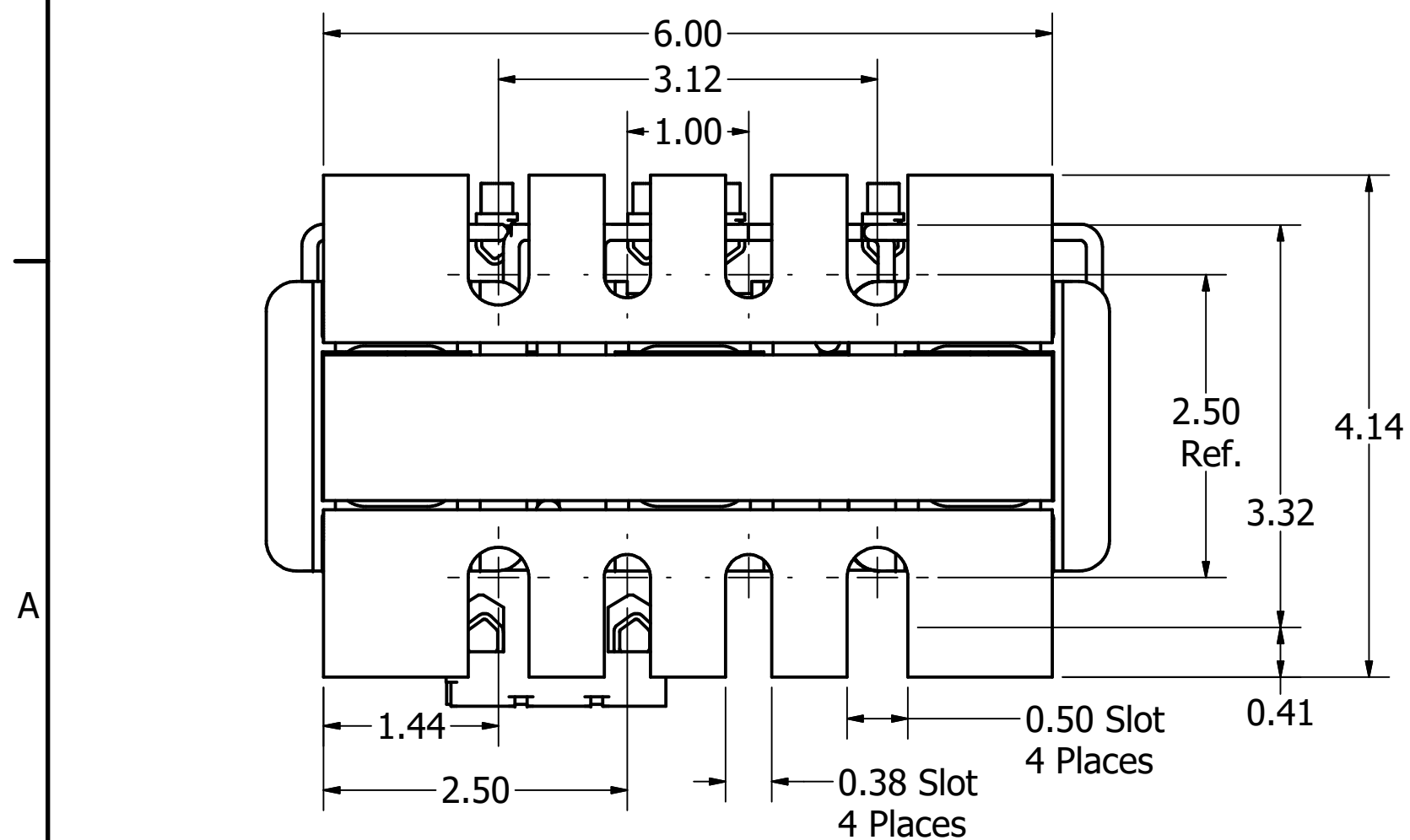
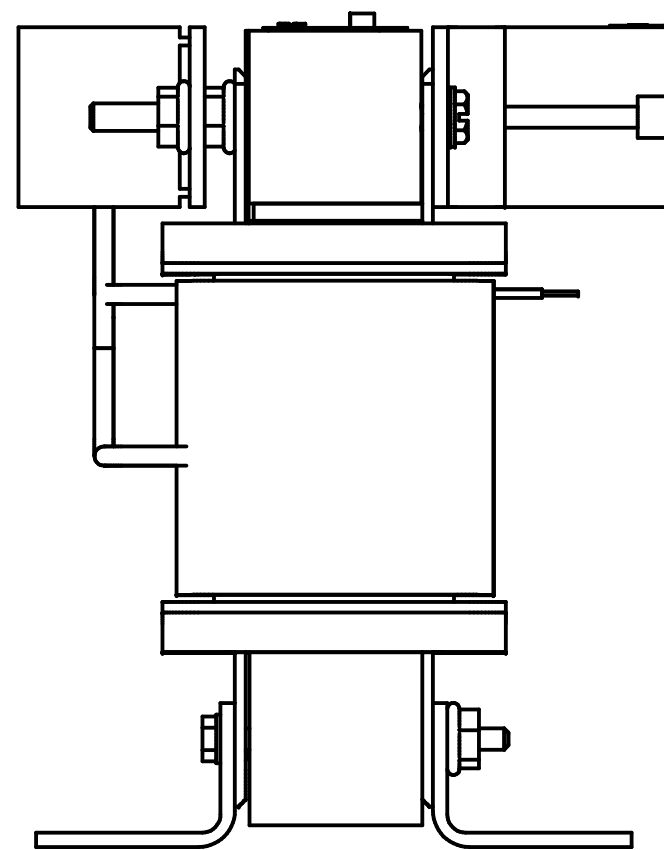
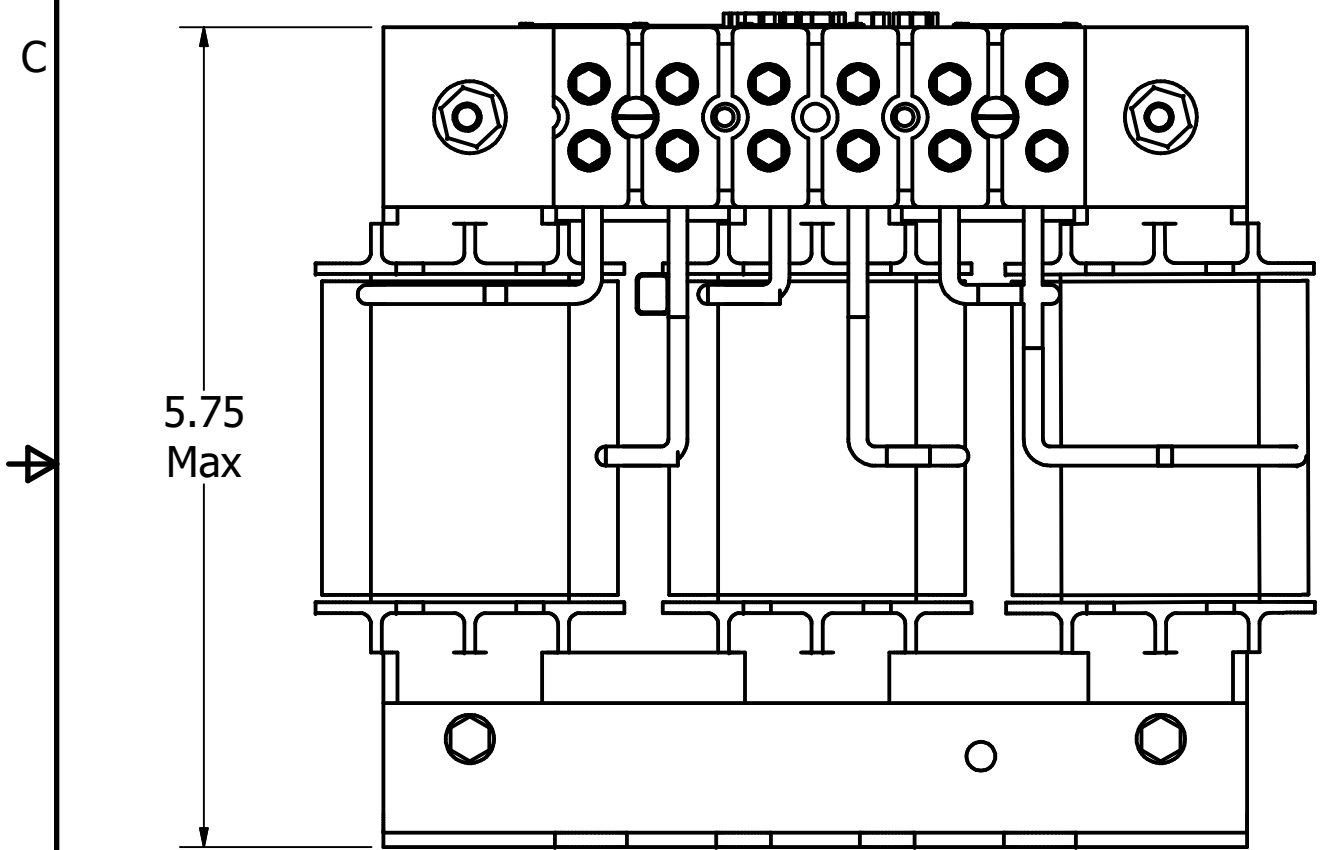


TCI Part Number	Rated Amps (A)	Rated Voltage (V)	Hz	---uH ±5%	Approx Weight (LBS)
KLRUL5ATBMG	5.5	480	60	9950	10
KLRUL8ATBMG	8	480	60	5980	8
KLRUL12ATBMG	12	480	60	3980	8
KLRUL8CTBMG	8	600	60	7470	15

(Customer Connections) Markings On Terminal Block For Reference Only.

Wire Range: 18-4 AWG.
Torque : 20 LBS-IN (2.3 Nm)



TCI (800) 824-8282 transcoll.com

TCI, LLC
Germantown, WI, USA.
transcoll.com
800-824-8282

KLRUL Reactor
KLRUL— Motor Amps —
3PH, 50/60Hz, —V Rated, 600V Max, —A Max, RoHS
40C Amb Max, RoHS
Use 75C CU conductors only, Term Torque—lb-in

UL LISTED CE
2ND CONT. EQ. MARK

DATE CODE A1 A2 B1 B2 C1 C2

- Notes:
1. UL file number: cULus Listed File E116124.
 2. KLR Reactors Comply With The Thermal and Altitude Standards Set Forth by NEMA ST20-1992.
 3. Material(s) Shall be RoHS Compliant
 4. Customer Is Responsible For Installation To Meet All National And Local Electrical Codes.

TCI, LLC CLAIMS PROPRIETARY RIGHTS IN THE MATERIAL HEREIN DISCLOSED. IT IS SUPPLIED WITHOUT PREJUDICE TO ANY PATENT RIGHTS OF TCI AND MAY NOT BE REPRODUCED OR USED TO MANUFACTURE ANYTHING SHOWN THEREIN WITHOUT WRITTEN PERMISSION FROM TCI.				TOLERANCES (EXCEPT AS NOTED) DECIMAL .XX ± .25 .XXX ± .10 FRACTIONAL ± 1/16 ANGULAR ± 1°		W132 N10611 Grant Drive Germantown, WI 53022 KLRUL C Frame, Terminal Block Reactor Drawing, UL Listed DRN BY JRN DATE 03/02/20 108467DG SCALE 3/4 APRVD: SIZE C SHT. 1 OF 1	
A	As Designed	03/02/20	JRN	NO	REVISION	DATE	BY