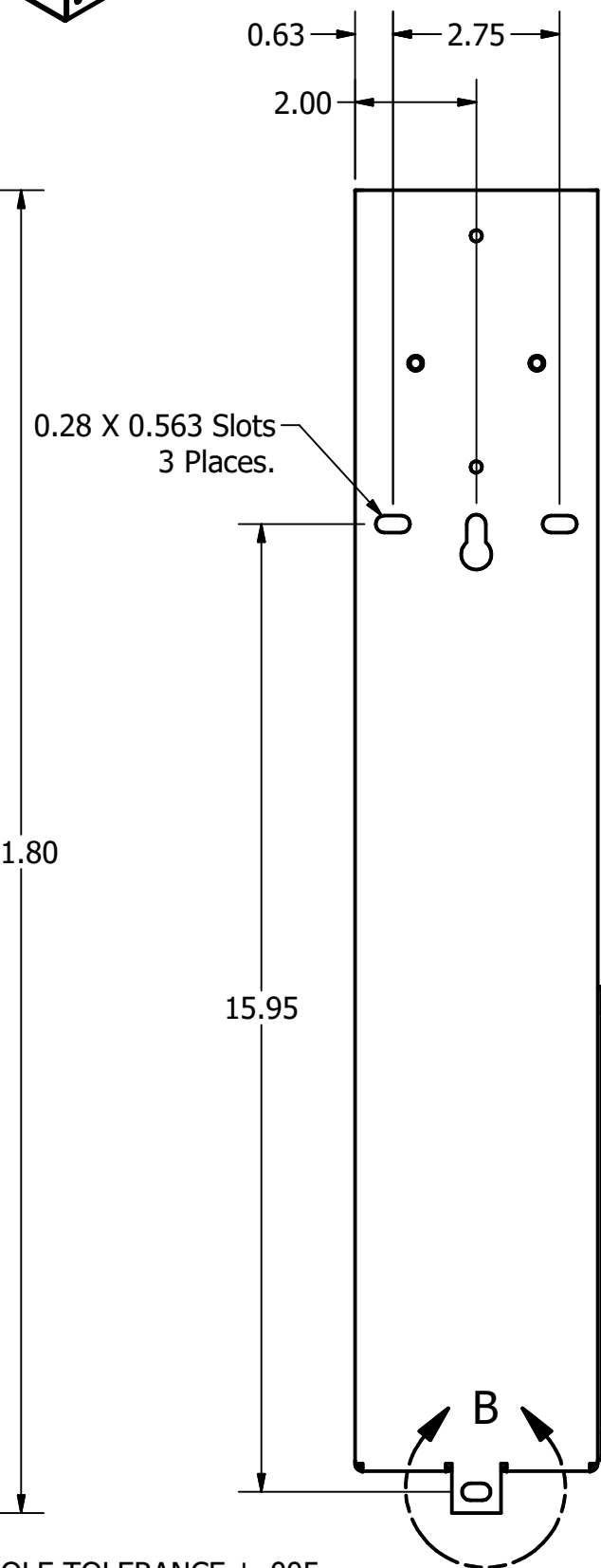
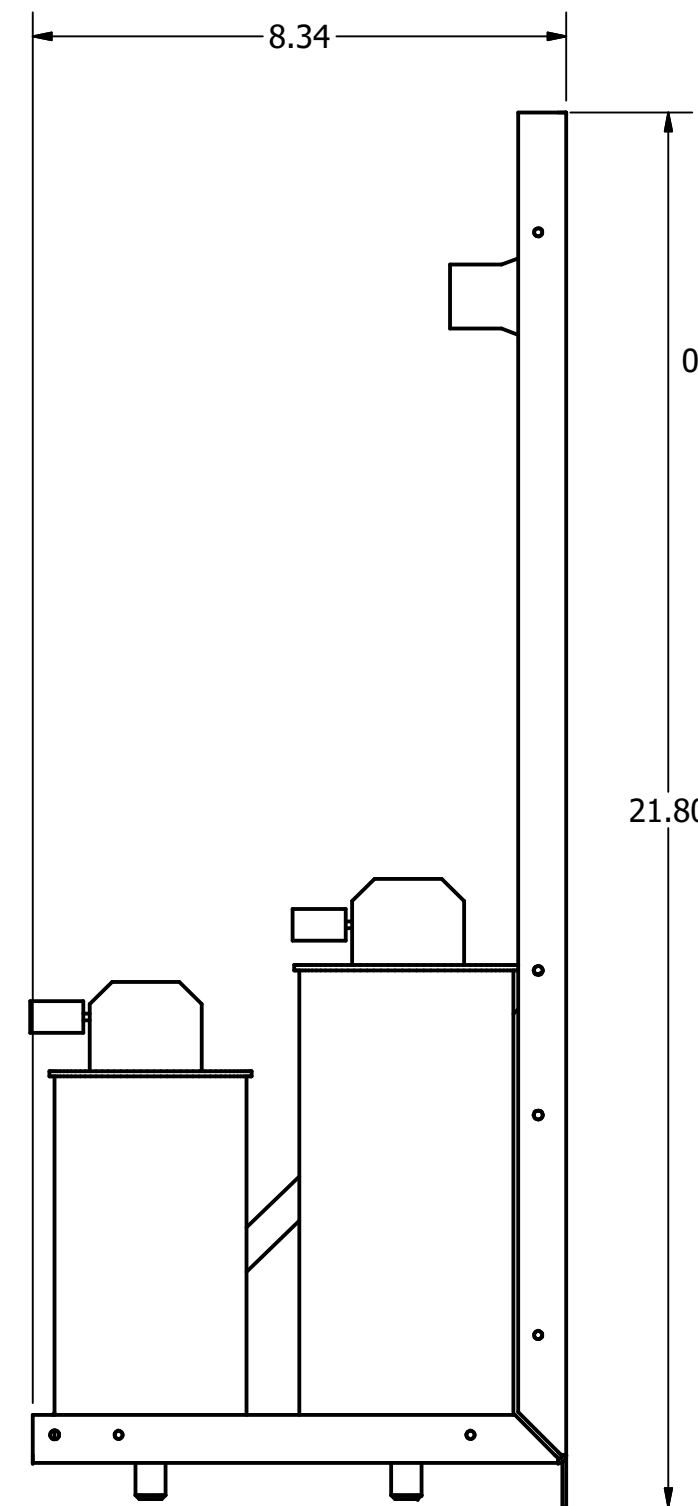
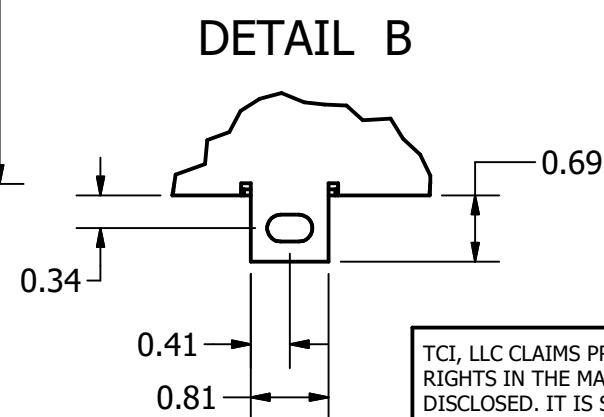
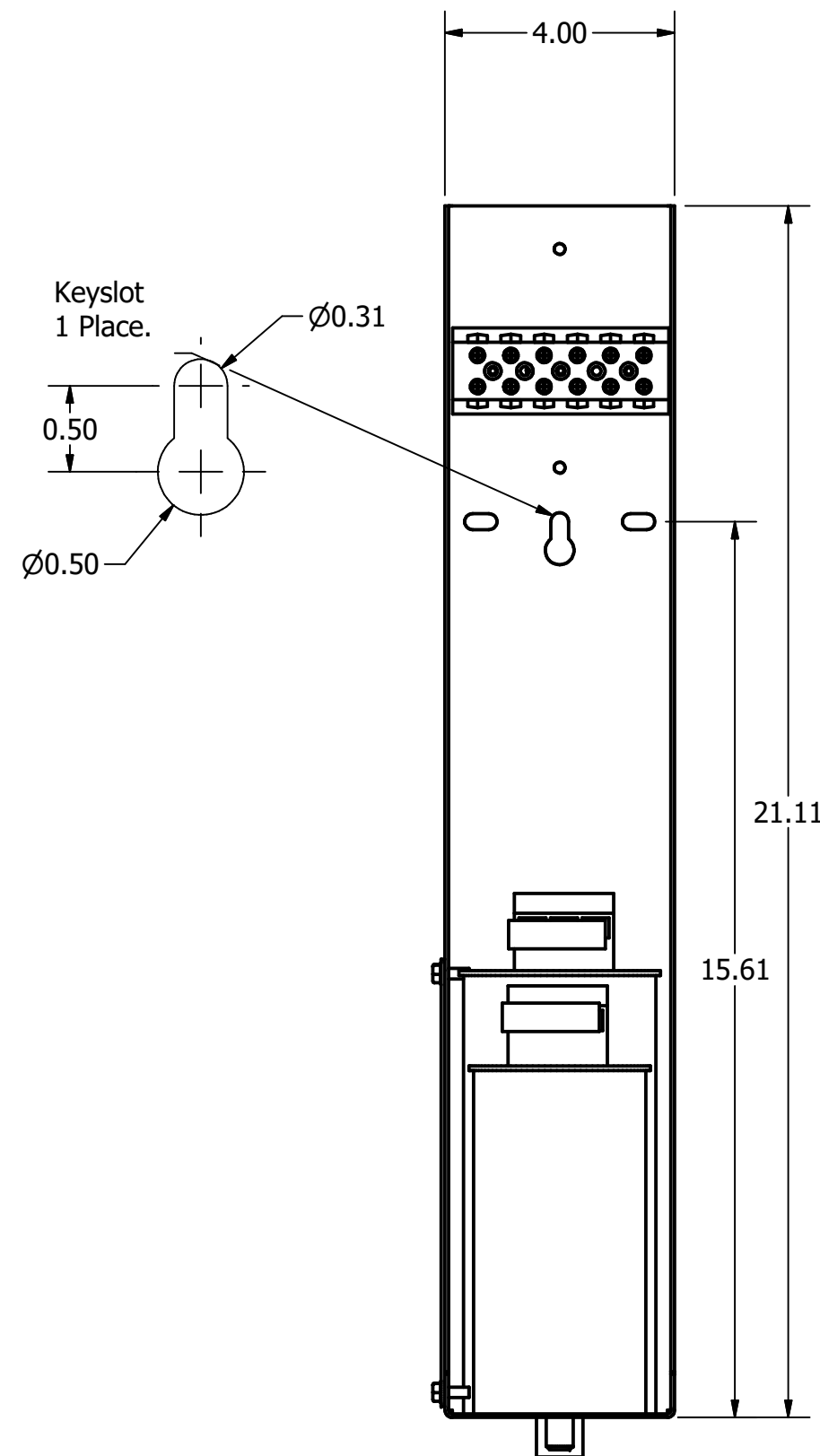
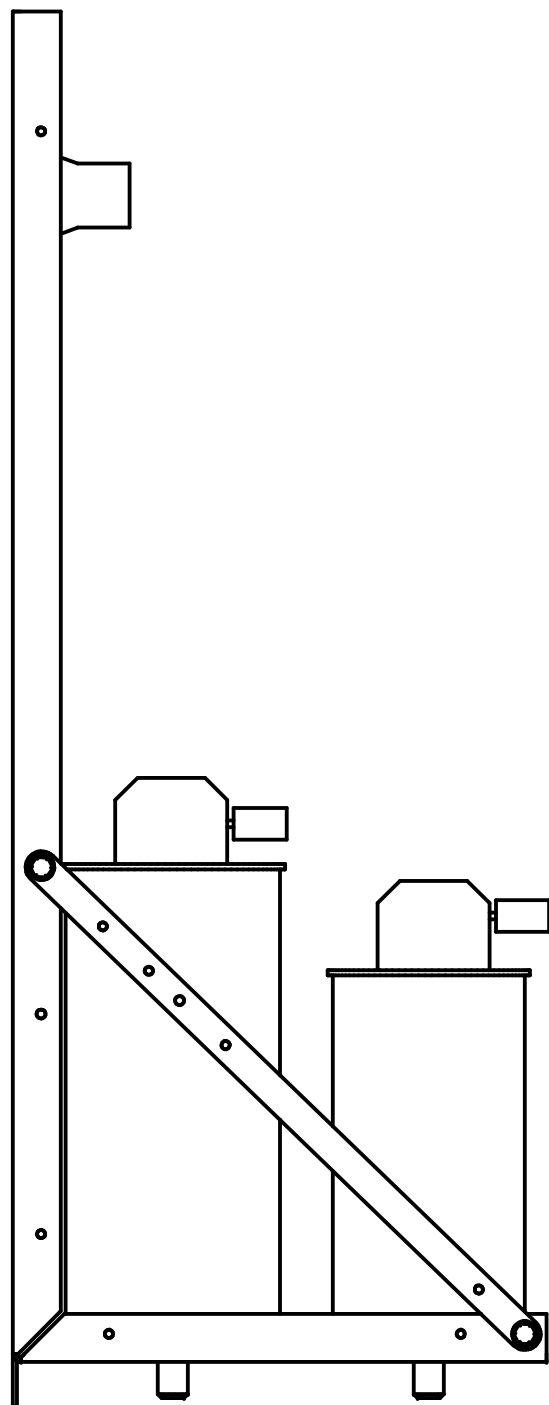
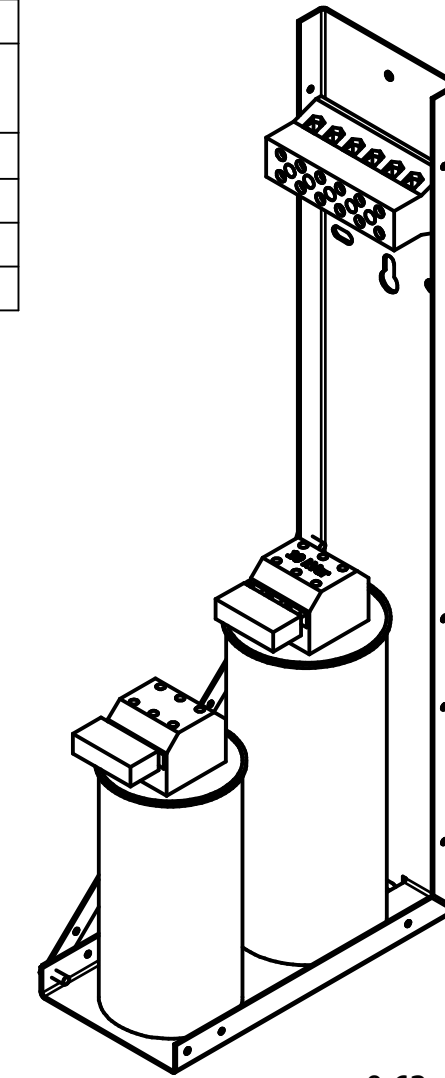
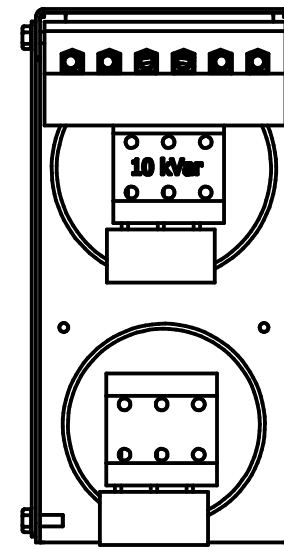


KPCUL013A64, 480V, 13kVar  
 Approx. Weight: 10 Lbs

Customer Input	
Wire Range	Tightening Torque
1-4	35 Lb-In
6-14	30 Lb-In
16-20	25 Lb-In
22	20 Lb-In



HOLE TOLERANCE ± .005

TCI, LLC CLAIMS PROPRIETARY RIGHTS IN THE MATERIAL HEREIN DISCLOSED. IT IS SUPPLIED WITHOUT PREJUDICE TO ANY PATENT RIGHTS OF TCI AND MAY NOT BE REPRODUCED OR USED TO MANUFACTURE ANYTHING SHOWN THEREIN WITHOUT WRITTEN PERMISSION FROM TCI.

TOLERANCES (EXCEPT AS NOTED)			
DECIMAL			
	.XX ± .25		
	.XXX ± .10		
FRACTIONAL			
	± 1/16		
ANGULAR			
	± 1°		
A	As Designed	10/21/19	JRN
NO	REVISION	DATE	BY

**TCI** W132 N10611 Grant Drive  
 Germantown, WI 53022

KPCUL013A64, 13 kVar.  
 Panelized Caps

DRN BY: JRN DATE: 10/21/19 SIZE: 108328DG  
 SCALE: To Fit APRVD: C

SHT. 1 OF 1