

4

3

2

1

GROUND LUG:

WIRE RANGE - FIVE 2/0-14AWG
TIGHTENING TORQUE 50 LB-IN.

L1 L2 L3

CUSTOMER CONNECTIONS:

WIRE RANGE - TWO 600MCM-4
TIGHTENING TORQUE 500 LB-IN.

T1 T2 T3

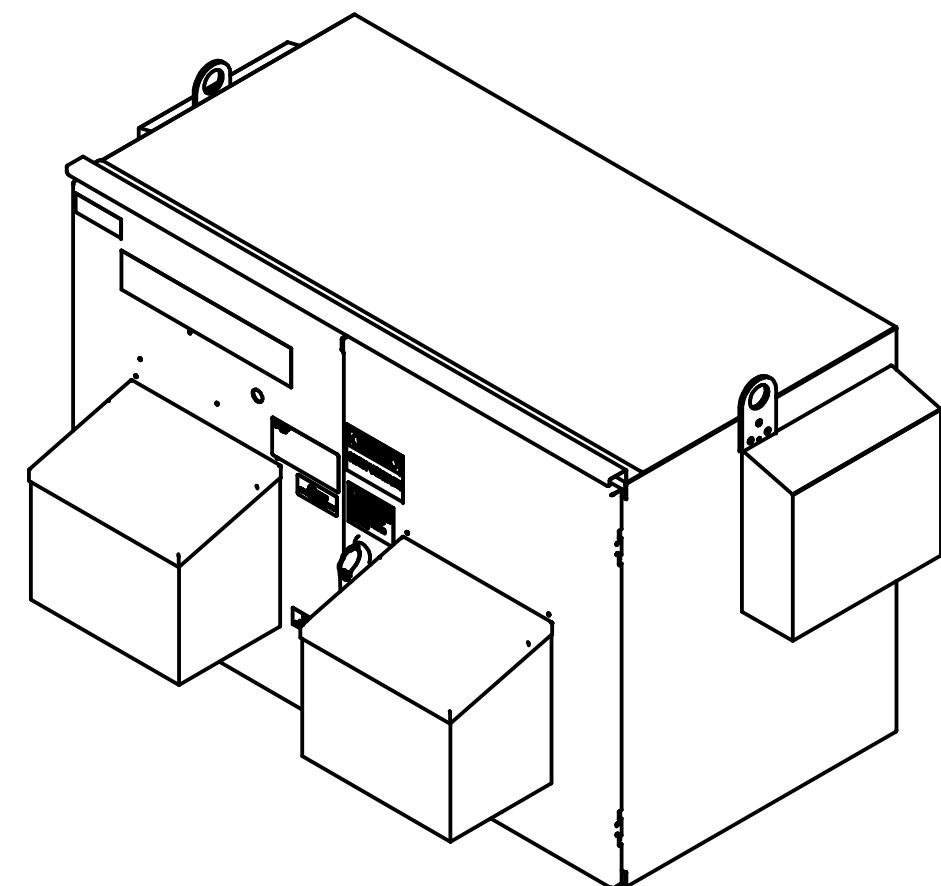
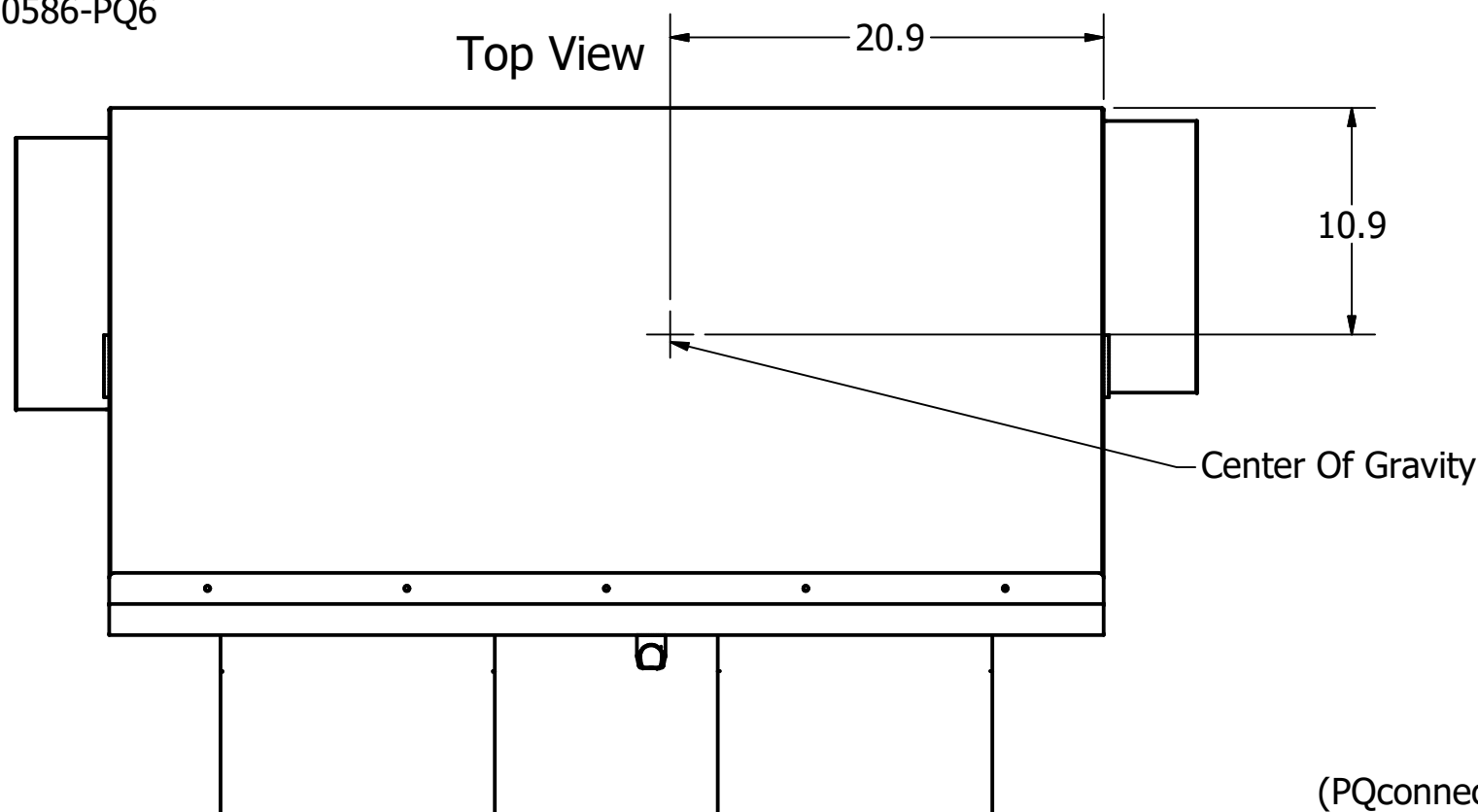
CUSTOMER CONNECTIONS:

WIRE RANGE - THREE 600MCM-2
TIGHTENING TORQUE 500 LB-IN.

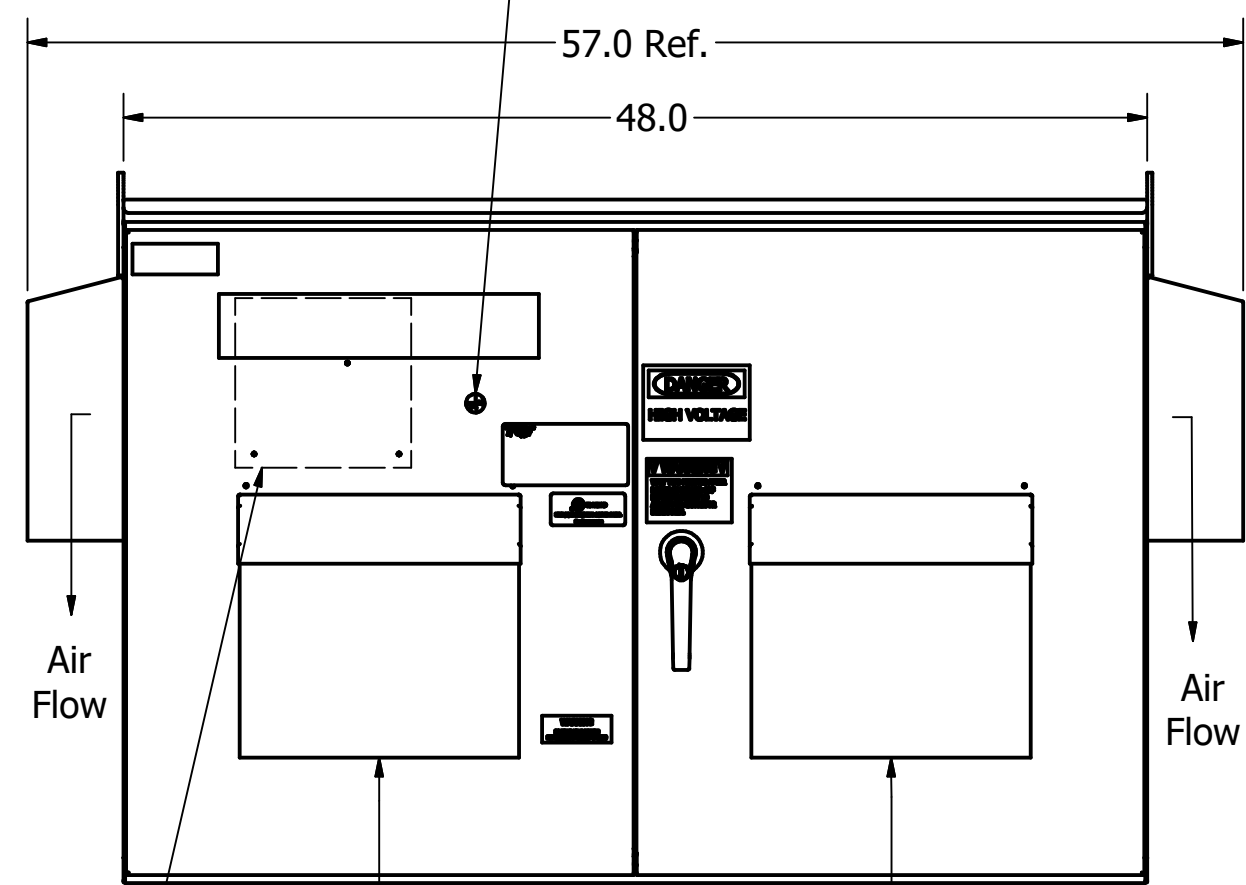
UNIT SPECIFICATIONS						
KVAR	HARMONIC	VOLT	Hz	PHASE	HP	AMPS
55	5TH	480	60	3	450	533

SCHEMATIC : 30586-PQ6

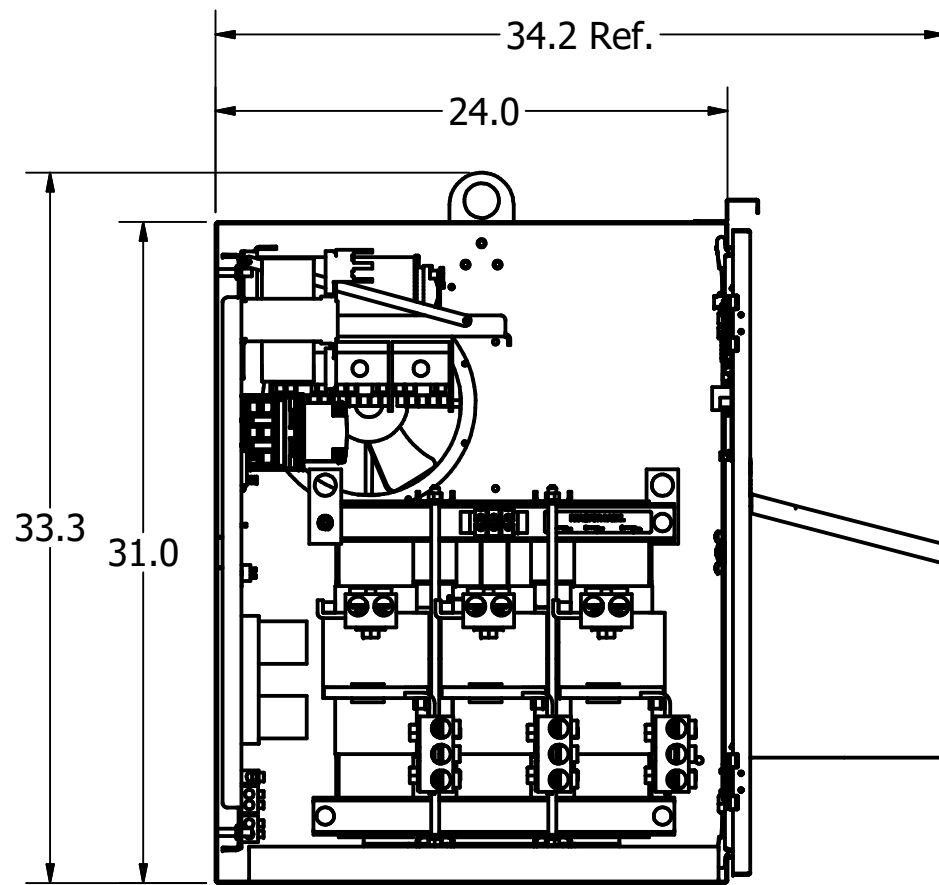
Top View



(PQconnect Board Service Connection Port)

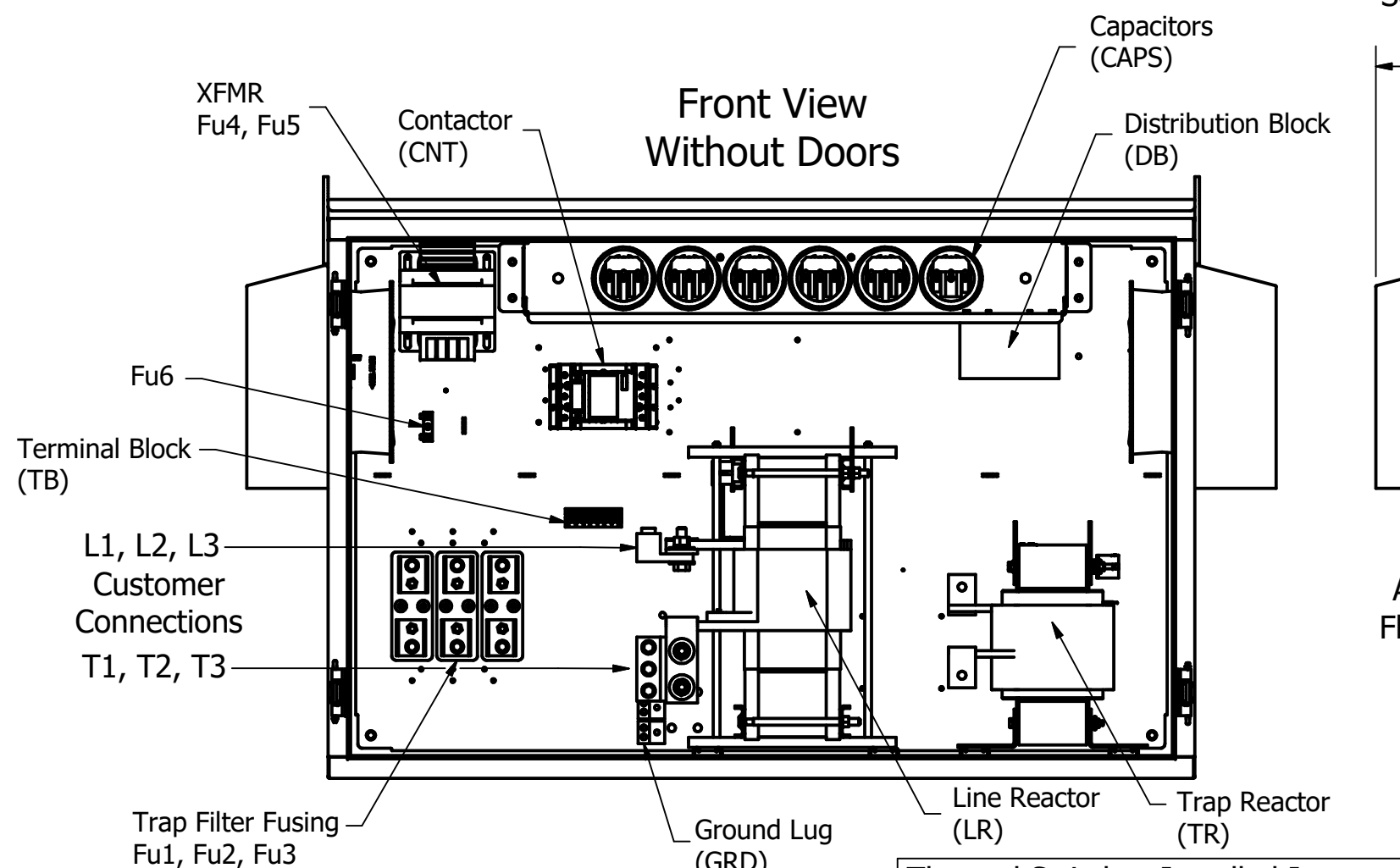


Front View



Side View Without Wall

Front View Without Doors

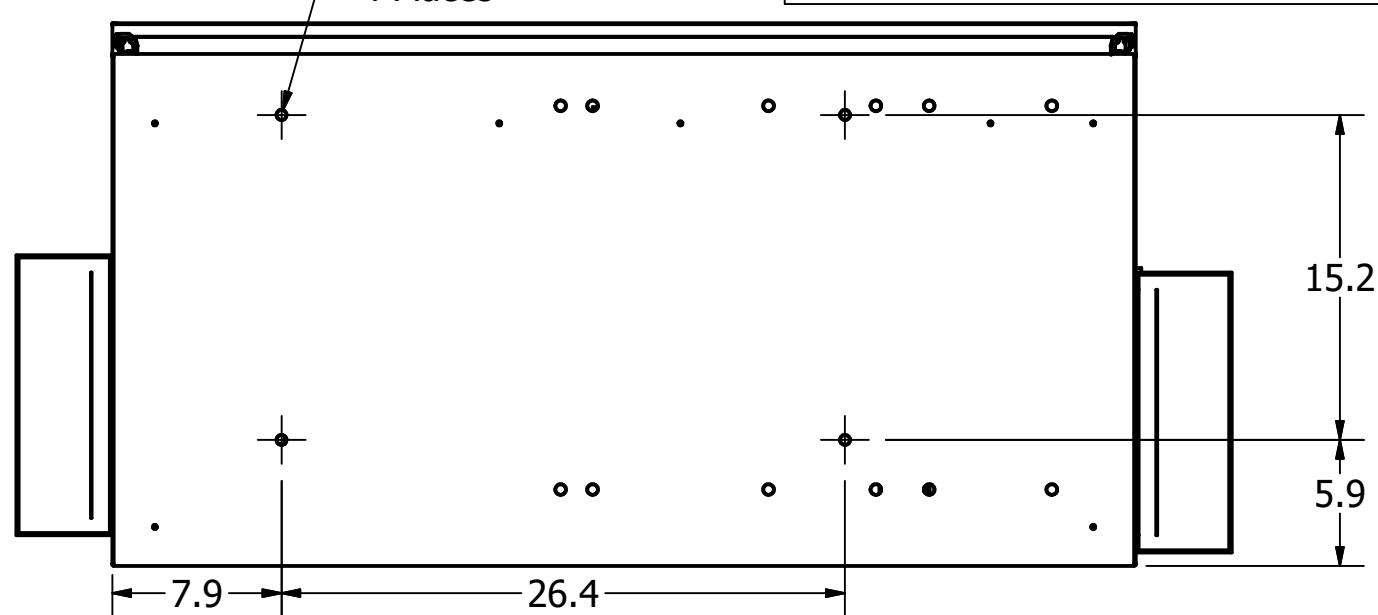
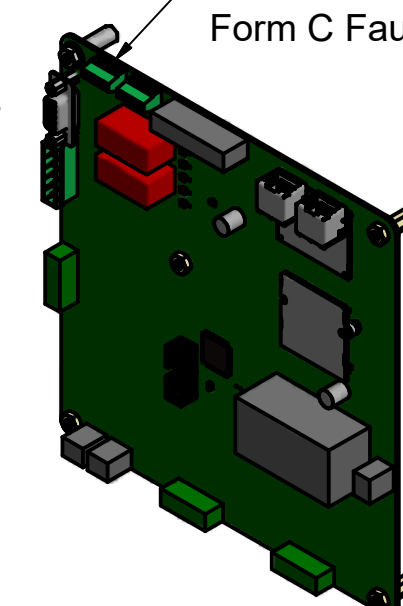


Thermal Switches Installed In Line Reactor And Tuning Reactor Wired To PQconnect For Monitoring

Ø.47 Mounting Holes 4 Places

PQconnect Contactor Control Board Mounted To Inside Of Door

Customer Connection Form C Fault Relay J10



Bottom View

Notes:

- Customer is responsible for installation to meet all national and local electrical codes.
- Use only hubs or fittings that comply with UL514B for type 3R enclosures.
- Approx. WT LBS : 850
- Enclosure Color: ANSI-61 Gray
- PQconnect Programming Model: Custom Unit HGL0450AWxC1xxxELC

THE INFORMATION AND DESIGNS CONTAINED IN THIS DRAWING ARE CONFIDENTIAL AND THE PROPRIETARY PROPERTY OF ALLIED MOTION TECHNOLOGIES INC. AND ITS SUBSIDIARIES. NEITHER THIS DESIGN NOR ANY INFORMATION CONTAINED IN THIS DRAWING MAY BE REPRODUCED OR DISCLOSED TO OTHERS WITHOUT THE EXPRESS WRITTEN CONSENT OF ALLIED MOTION TECHNOLOGIES INC. AND ITS SUBSIDIARIES.

NO	REVISION	DATE	BY	TOLERANCES (EXCEPT AS NOTED)
E	5863-1 Updated Customer Connections	02/14/22	JRN	DECIMAL
D	5863 Updated CNT	02/14/22	JRN	.XX ± .25 .XXX ± .10
C	5394 Updated Enclosure, Hoods, Back	09/29/20	JRN	FRACTIONAL
B	4865 Programming Note Added	09/06/19	JRN	± 1/32
A	As Designed	07/09/19	JRN	ANGULAR
				± 1°

TCL W132N10611 Grant Drive
 Germantown, WI 53022
 © 2022 TCL, LLC
 An Allied Motion Company
 Multistack, HGL, 450HP, 480/3/60, Type 3R
 CNT, PQconnect, Low Profile, 2 Tsw, Spcl Low C

DRN BY: JRN DATE: 07/09/19
 SCALE: 1/9 APRVD: SIZE: C
 108210DG
 SHT.1 OF 1

4

3

2

1