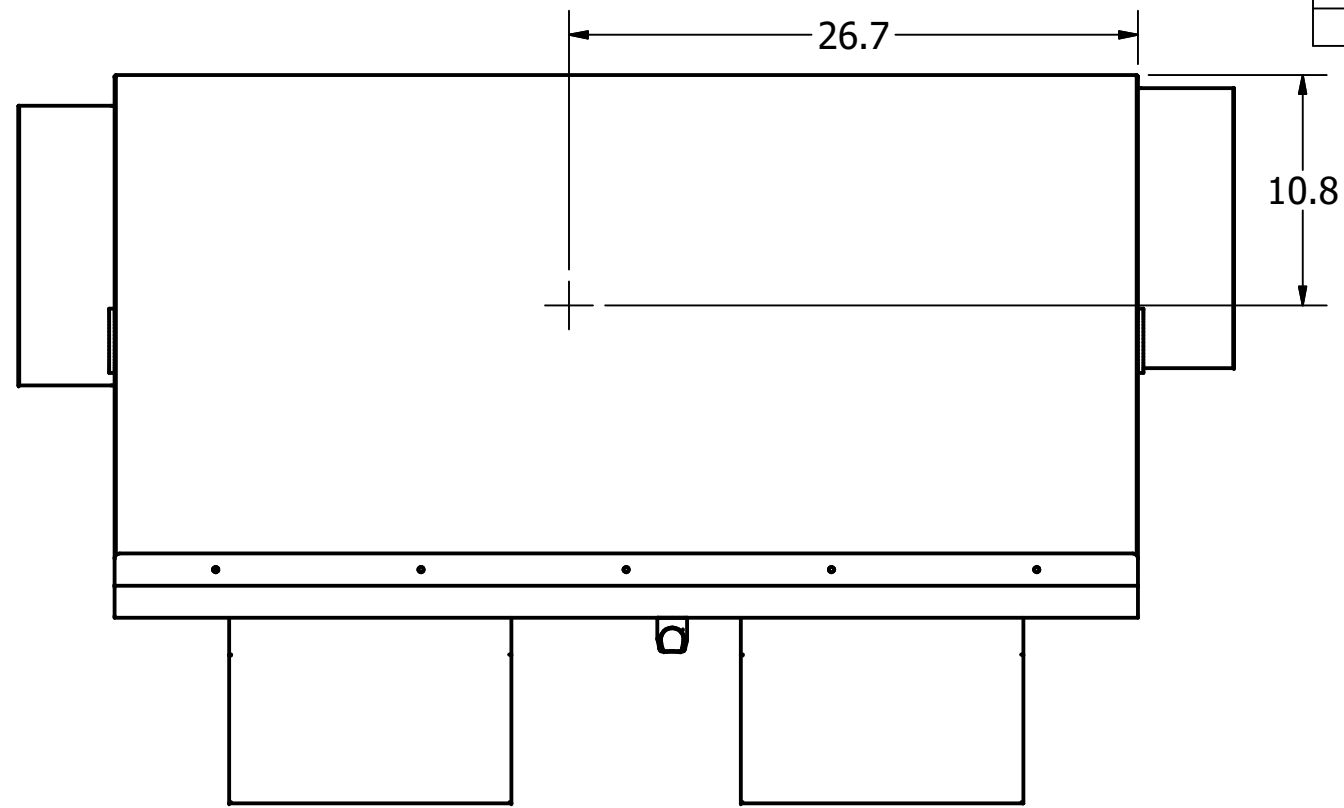


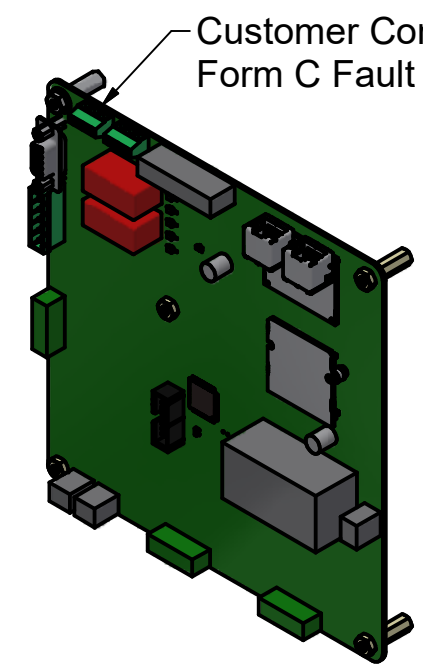
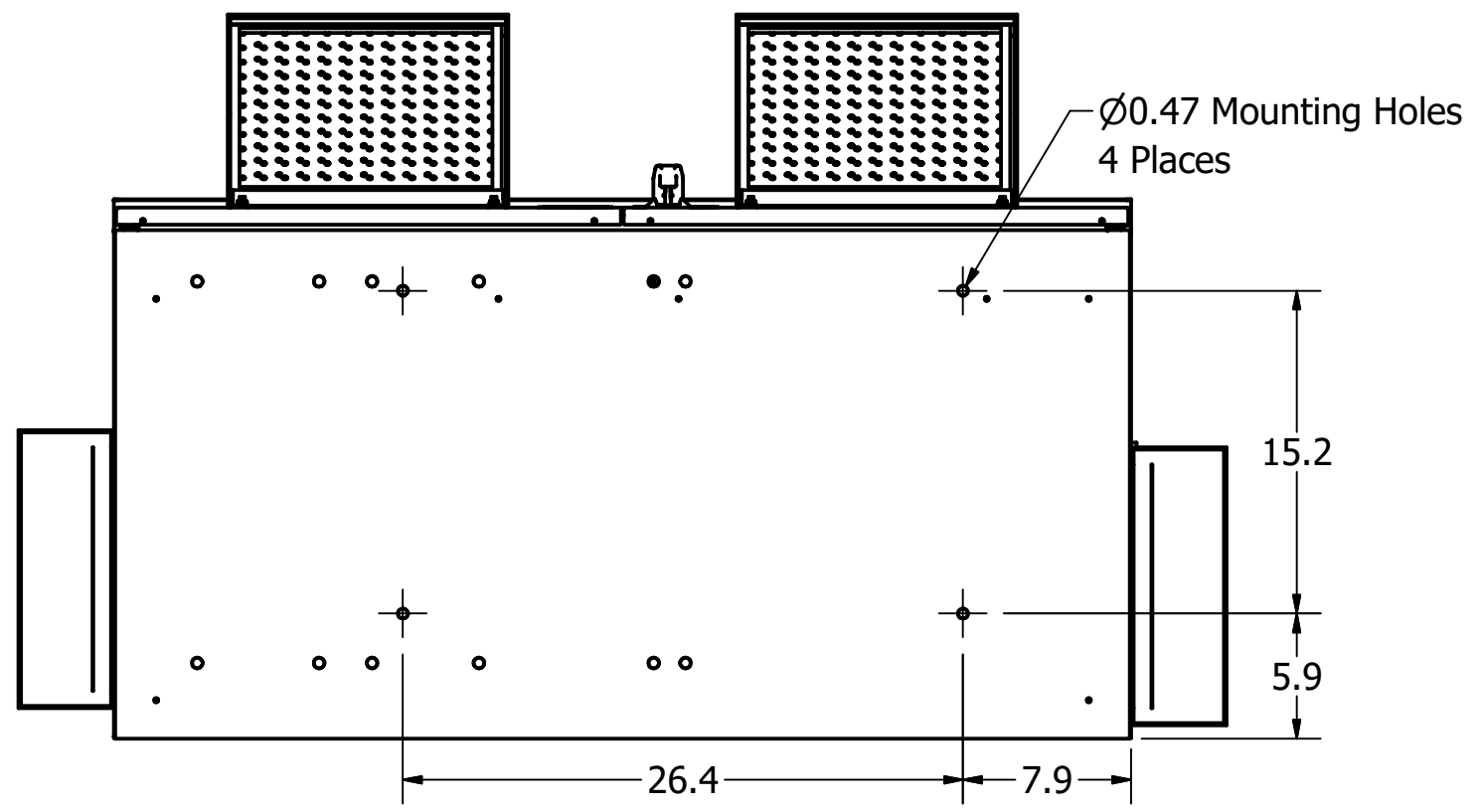
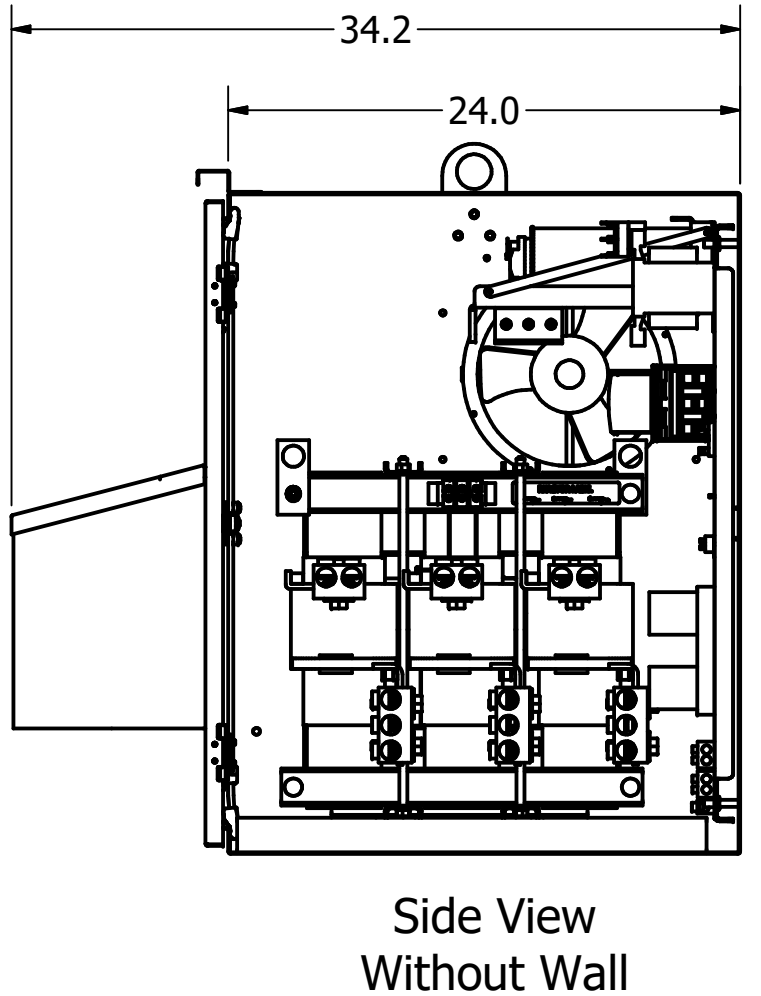
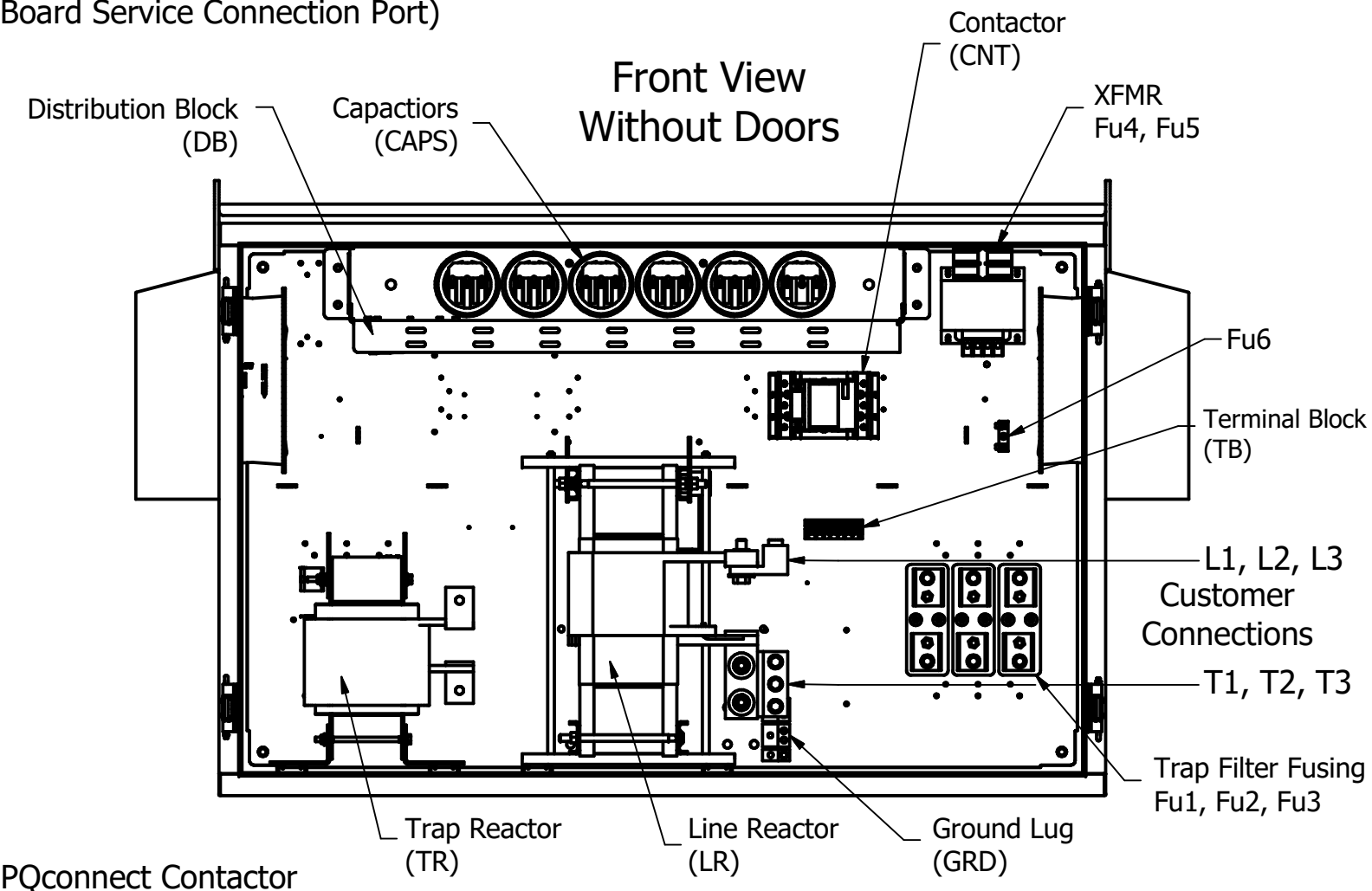
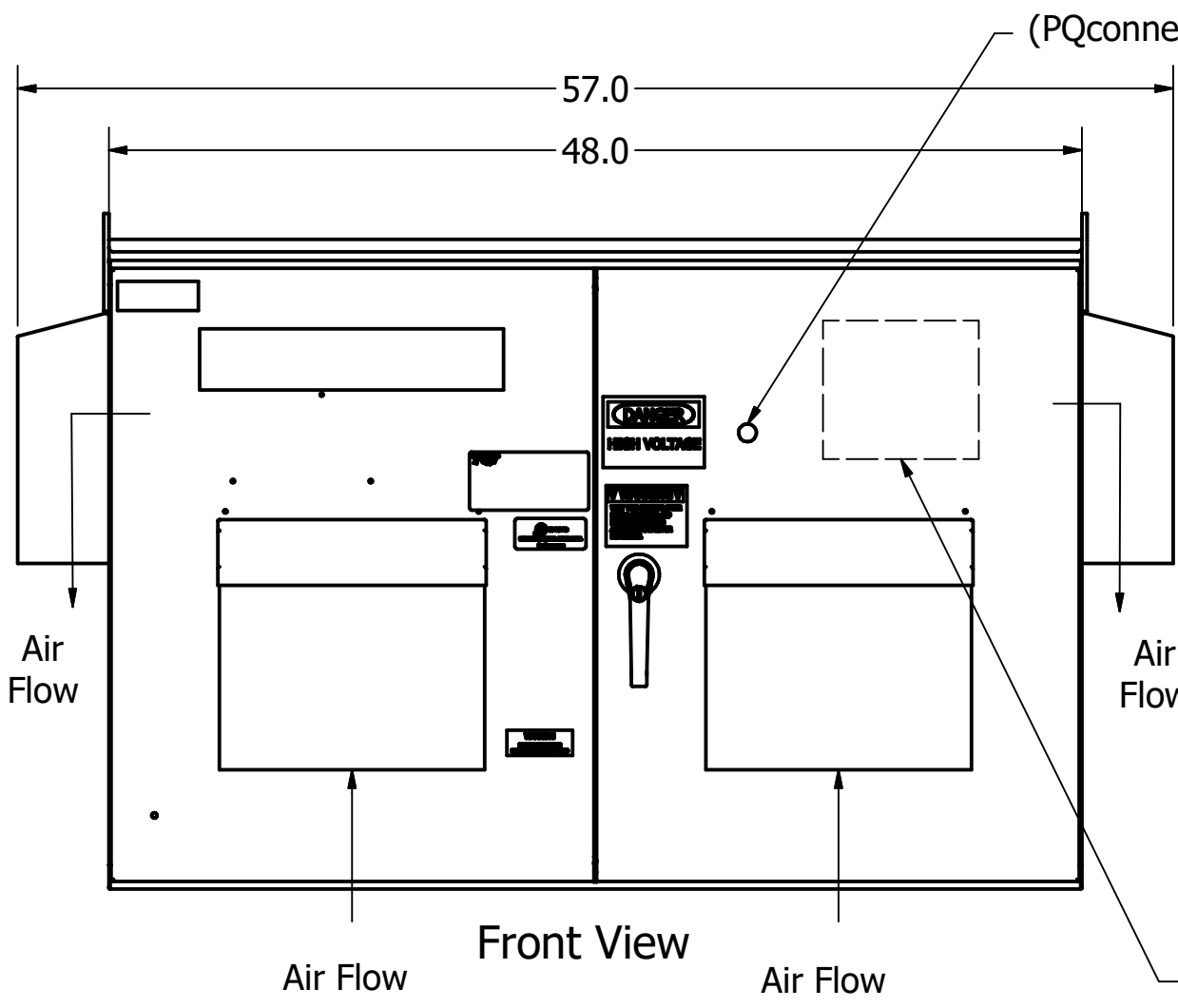
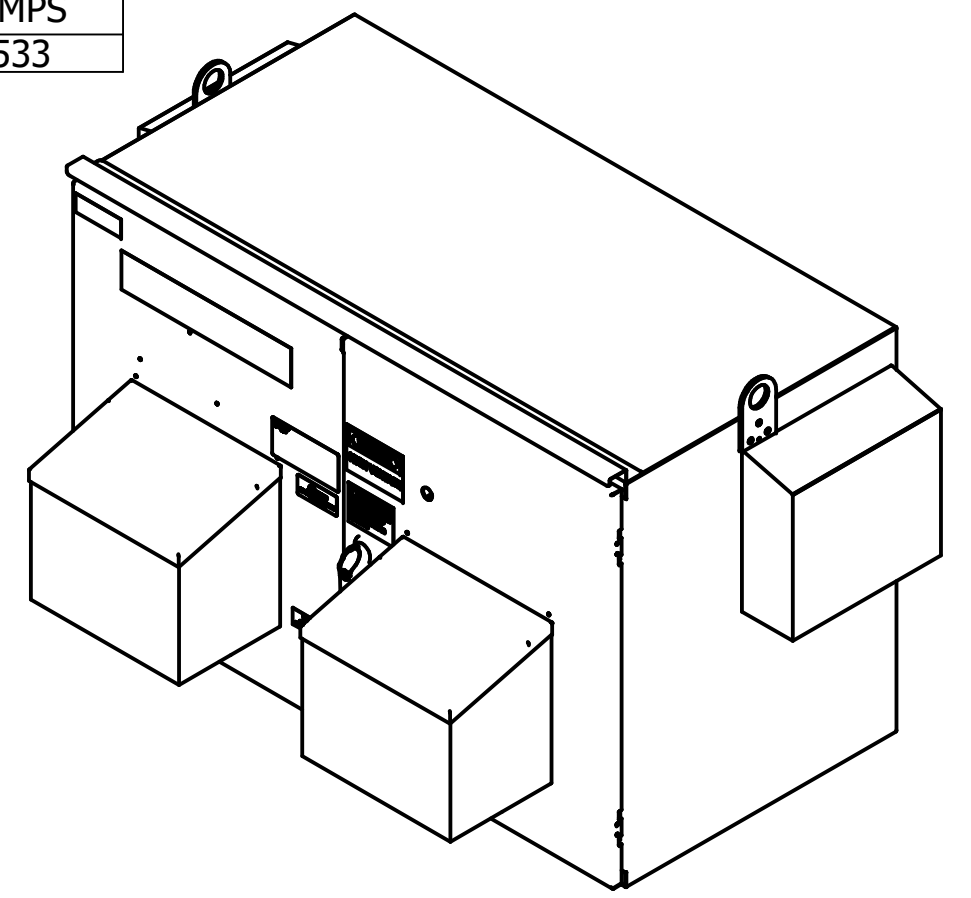
Top View



| UNIT SPECIFICATIONS | | | | | | | |
|---------------------|-----|------|----------|------|----|-------|------|
| Part Number | HP | KVAR | HARMONIC | VOLT | Hz | PHASE | AMPS |
| 108210-01 | 450 | 55 | 5TH | 480 | 60 | 3 | 533 |

SCHEMATIC : 30586-PQ6

- Notes:
1. Customer is responsible for installation to meet all national and local electrical codes.
 2. Use only hubs or fittings that comply with UL514B for type 3R enclosures.
 3. Approx. WT LBS : 850
 4. Enclosure Color: ANSI-61 Gray
 5. PQconnect Programming Model: Custom Unit HGL0450AWxC1xxxELC



Thermal Switches Installed In Line Reactor And Tuning Reactor Wired To PQconnect For Monitoring

GROUND LUG:
 WIRE RANGE - FIVE 2/0-14AWG
 TIGHTENING TORQUE 50 LB-IN.
 L1 L2 L3
 CUSTOMER CONNECTIONS:
 WIRE RANGE - TWO 600MCM-4
 TIGHTENING TORQUE 500 LB-IN.
 T1 T2 T3
 CUSTOMER CONNECTIONS:
 WIRE RANGE - THREE 600MCM-2
 TIGHTENING TORQUE 500 LB-IN.

| | | | | | | | |
|--|-------------|----------|-----|--|-----|---|-------------|
| THE INFORMATION AND DESIGNS CONTAINED IN THIS DRAWING ARE CONFIDENTIAL AND THE PROPRIETARY PROPERTY OF ALLIED MOTION TECHNOLOGIES INC. AND ITS SUBSIDIARIES. NEITHER THIS DESIGN NOR ANY INFORMATION CONTAINED IN THIS DRAWING MAY BE REPRODUCED OR DISCLOSED TO OTHERS WITHOUT THE EXPRESS WRITTEN CONSENT OF ALLIED MOTION TECHNOLOGIES INC. AND ITS SUBSIDIARIES. | | | | TOLERANCES (EXCEPT AS NOTED) DECIMAL .XX ± .03 .XXX ± .010 FRACTIONAL ± 1/32 ANGULAR ± 1° | | W132N10611 Grant Drive Germantown, WI 53022 © 2023 TCI, LLC An Allied Motion Company Multistack, HGL, 300HP, 480/3/60, Type 3R CNT, PQconnect, Low Profile, 2 Tsw, Spl Low C | |
| A | As Designed | 03/24/23 | JRN | DRN BY | JRN | DATE | 03/24/23 |
| NO | REVISION | DATE | BY | SCALE | 1/9 | APRVD: | 108210-01DG |

Bottom View

26.4 7.9

15.2 5.9

Ø0.47 Mounting Holes
4 Places

108210-01DG