

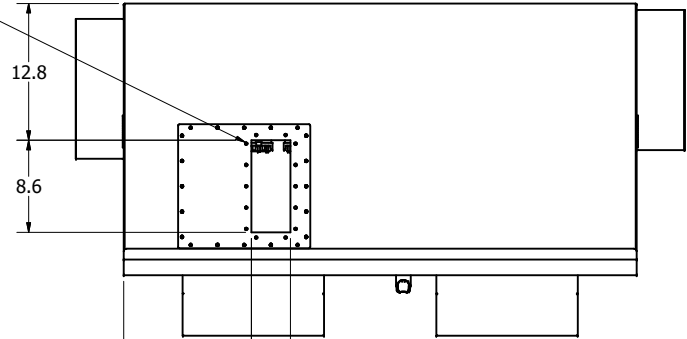
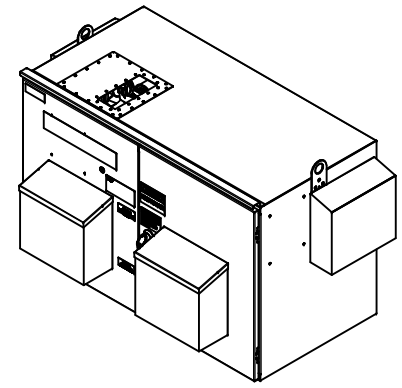
UNIT SPECIFICATIONS						
KW	VOLT	PHASE	HZ	HARMONIC	KVAR	AMPS
250	380-415	3	50	5TH	102	470

SCHEMATIC : 31582 Top View

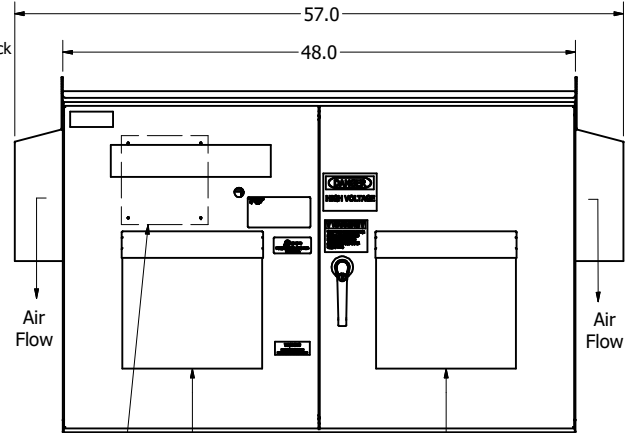
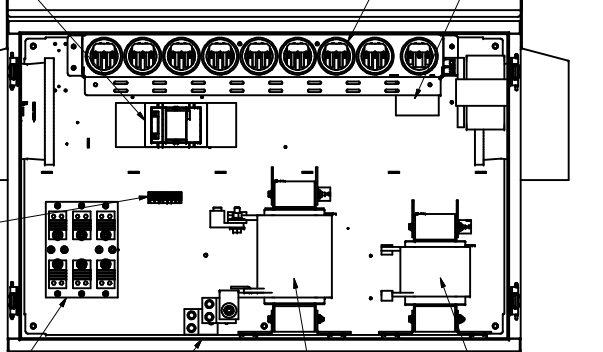
GROUND LUG:
WIRE RANGE - TWO 600MCM-2
TIGHTENING TORQUE 500 IN-LB.

L1 L2 L3 T1 T2 T3
CUSTOMER CONNECTIONS:
WIRE RANGE - TWO 600MCM-2
TIGHTENING TORQUE 500 IN-LB.

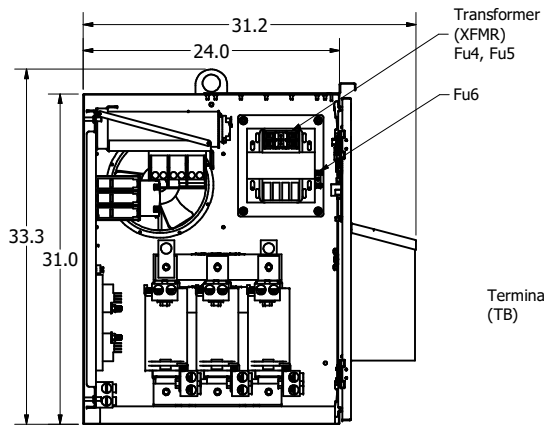
- Notes:
1. Customer is responsible for installation to meet all national and local electrical codes.
 2. Use only hubs or fittings that comply with UL514B for type 3R enclosures.
 3. Approx. WT LBS : 850
 4. Enclosure Color: RAL 7006 Beige Grey.
 5. Filter Configured With Dry Capacitors.
 6. JCI Part Number: 377-67728-002



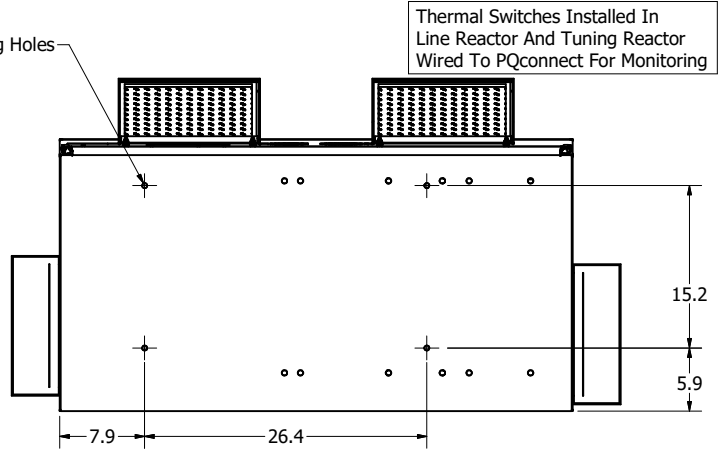
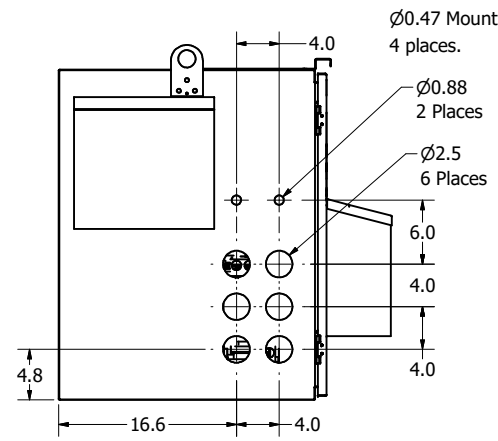
Front View Without Doors



Front View

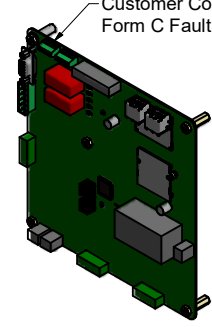



Side View Without Wall



Bottom View

PQconnect Contactor Control Board Mounted To Inside Of Door
Customer Connection Form C Fault Relay J10



THE INFORMATION AND DESIGNS CONTAINED IN THIS DRAWING ARE CONFIDENTIAL AND THE PROPRIETARY PROPERTY OF ALLIED MOTION TECHNOLOGIES INC. AND ITS SUBSIDIARIES. NEITHER THIS DESIGN NOR ANY INFORMATION CONTAINED IN THIS DRAWING MAY BE REPRODUCED OR DISCLOSED TO OTHERS WITHOUT THE EXPRESS WRITTEN CONSENT OF ALLIED MOTION TECHNOLOGIES INC. AND ITS SUBSIDIARIES.				TOLERANCES (EXCEPT AS NOTED)		 <small>WI32N10611 (Rev. 11/20) Germantown, WI 53022</small> <small>© 2021 TCI, LLC</small>	
E	5913 Updated CNT	04/08/22	JRN	DECIMAL			
D	5668 Bracket Updated	07/23/21	JRN	.XX ±.03			
C	5476 Corrected kVar Value	12/17/20	JRN	.XXX ±.010			
B	5464 Added .88 Holes	12/04/20	JRN	FRACTIONAL	250kW, 380-415/3/50, Type 3R, JCI PQconnect	DATE 11/10/20	108200-01DG
A	As Designed	11/10/20	JRN	ANGULAR		SCALE: 1/9	REVISED
NO	REVISION	DATE	BY	± 1°			SHT 1 OF 1