

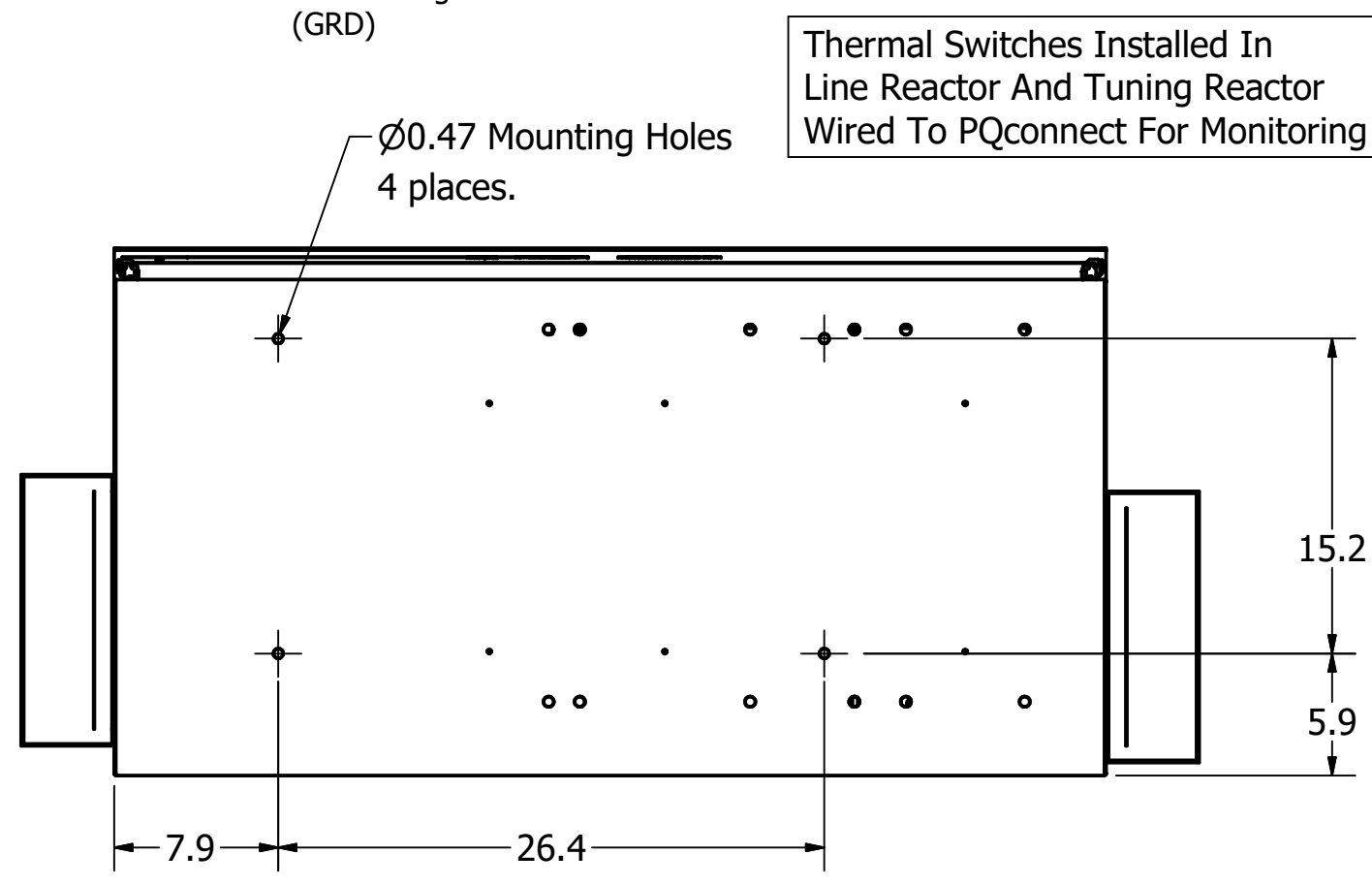
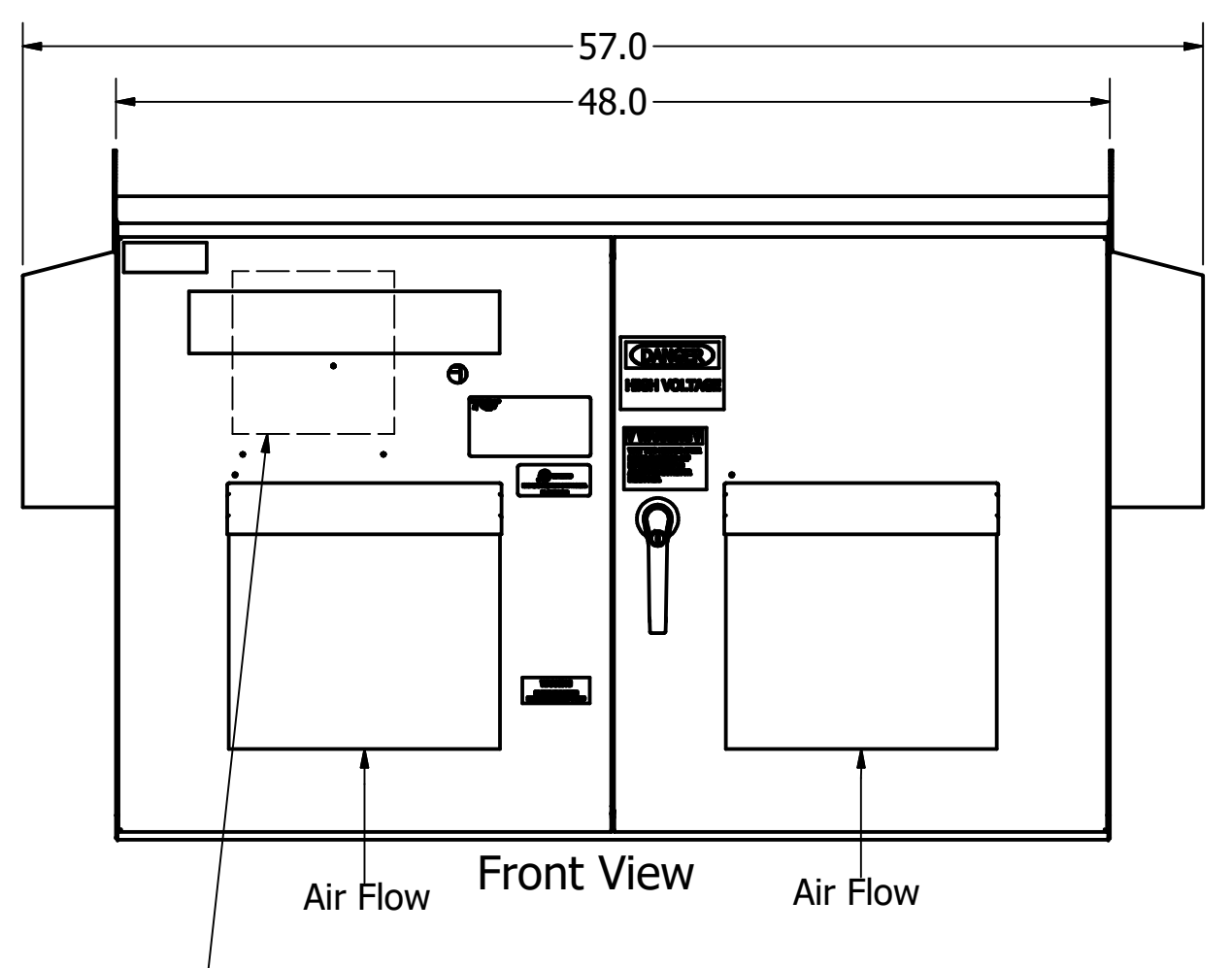
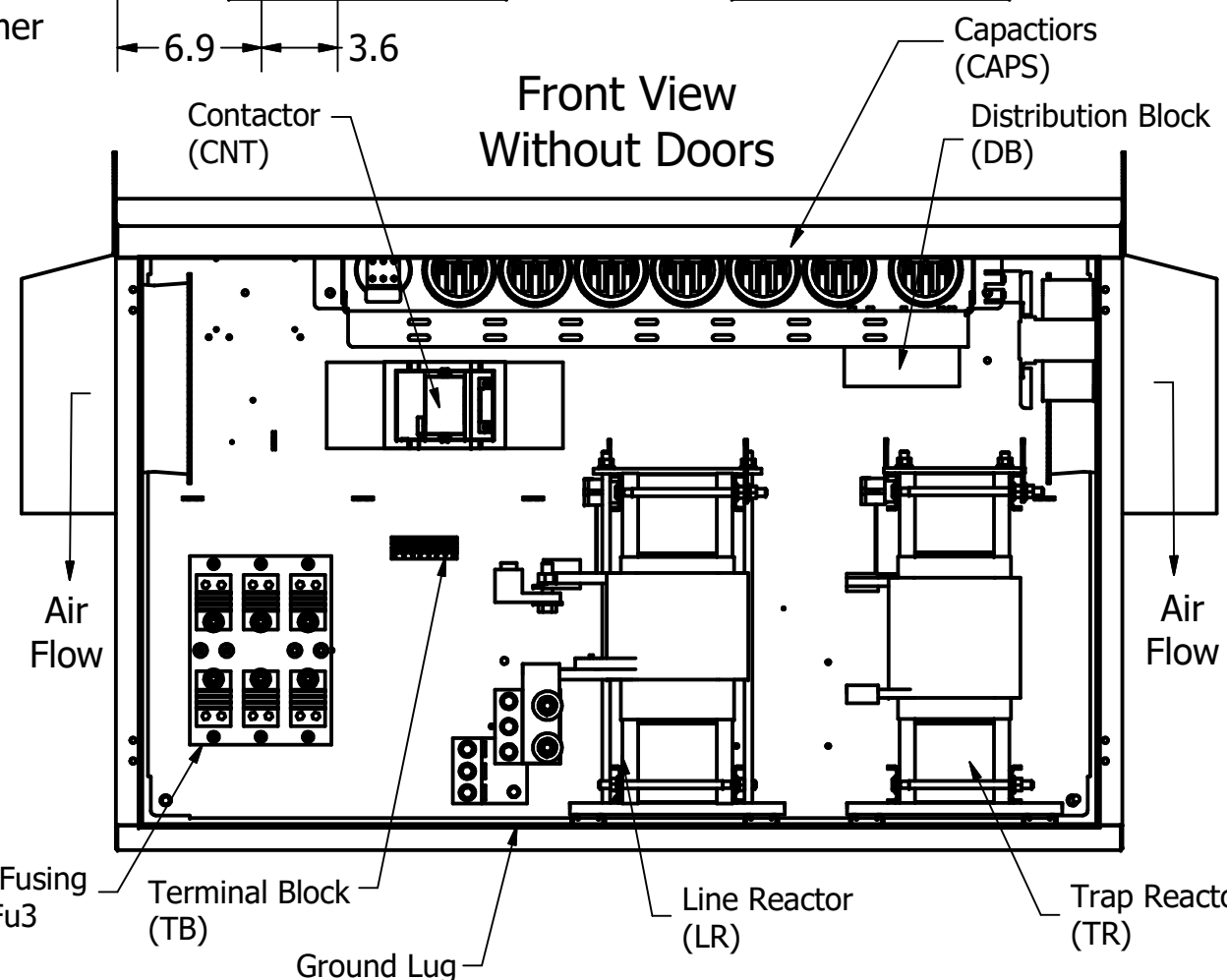
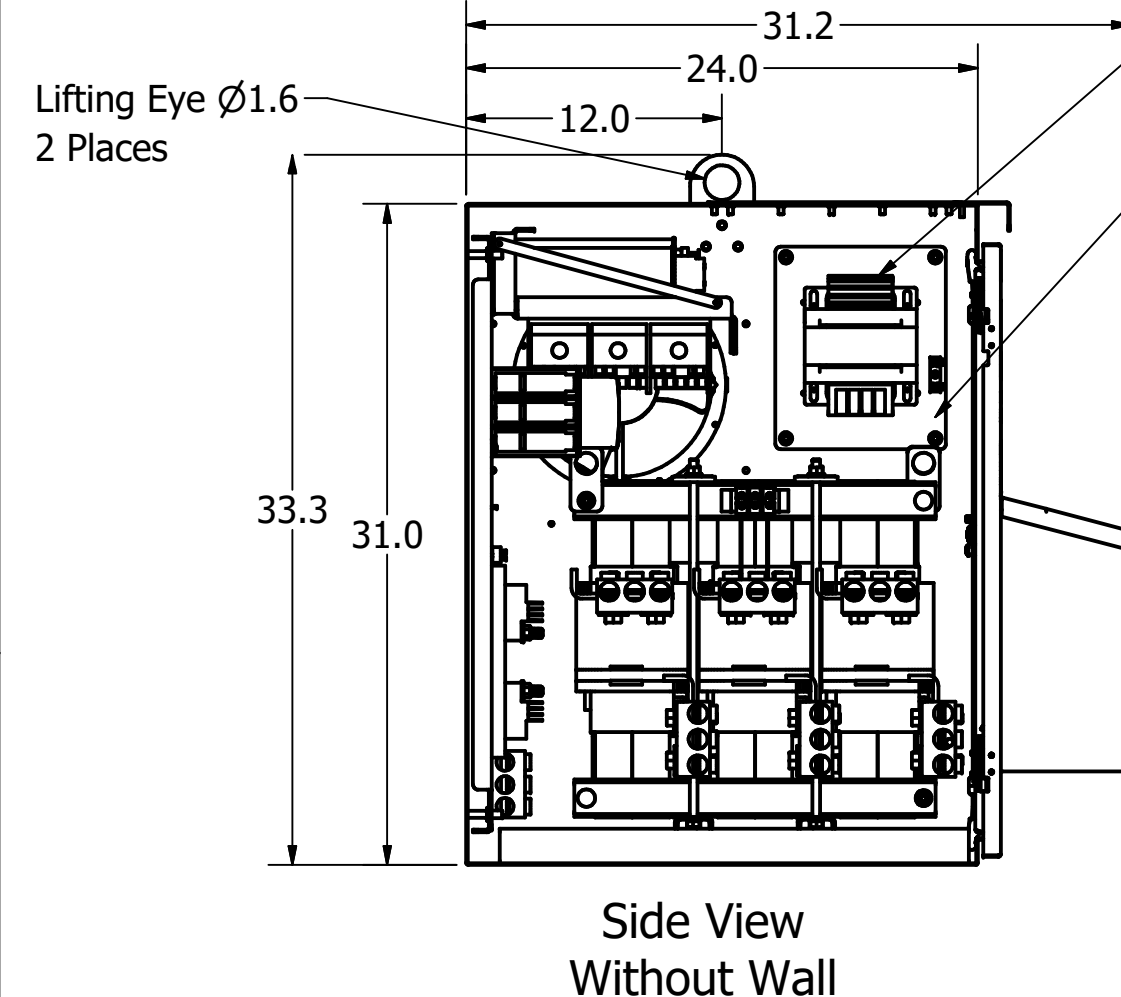
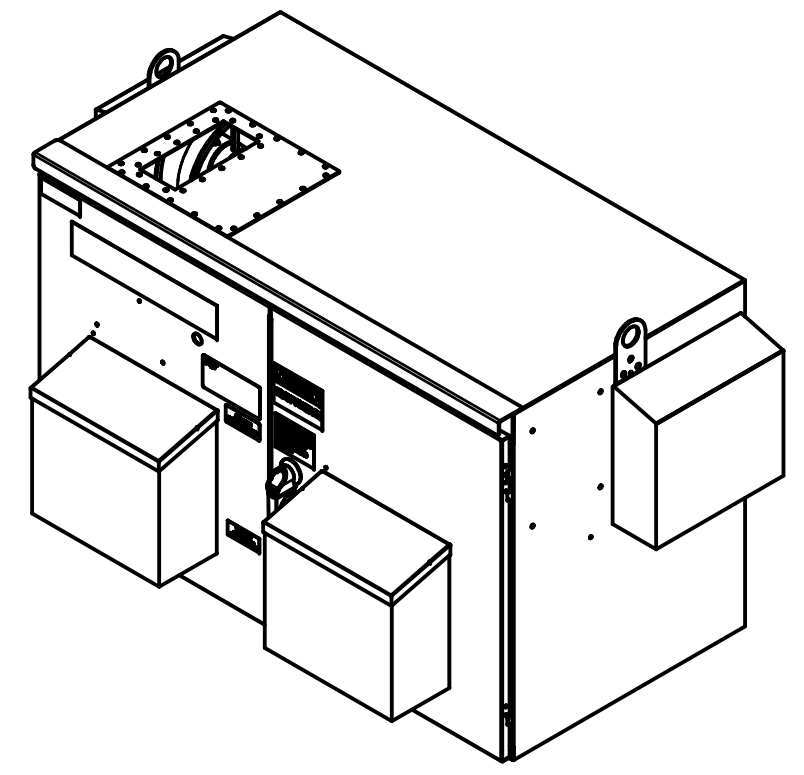
**GROUND LUG:**  
 WIRE RANGE - THREE 600MCM-2  
 TIGHTENING TORQUE 500 LB-IN.

**CUSTOMER CONNECTIONS:**  
 WIRE RANGE - THREE 600MCM-2  
 TIGHTENING TORQUE 500 LB-IN.

- Notes:**
1. Customer is responsible for installation to meet all national and local electrical codes.
  2. Use only hubs or fittings that comply with UL514B for type 3R enclosures.
  3. Approx. WT LBS : 950
  4. Enclosure Color: RAL 7006 Beige Grey
  5. PQconnect Programming Model: Custom Unit HGL0500AWxC1xxx
  6. JCI Part Number: 371-09214-206

UNIT SPECIFICATIONS						
HP	VOLT	PHASE	HZ	HARMONIC	KVAR	AMPS
500	480	3	60	5TH	75	590

SCHEMATIC : 30586-PQ6 Top View



THE INFORMATION AND DESIGNS CONTAINED IN THIS DRAWING ARE CONFIDENTIAL AND THE PROPRIETARY PROPERTY OF ALLIED MOTION TECHNOLOGIES INC. AND ITS SUBSIDIARIES. NEITHER THIS DESIGN NOR ANY INFORMATION CONTAINED IN THIS DRAWING MAY BE REPRODUCED OR DISCLOSED TO OTHERS WITHOUT THE EXPRESS WRITTEN CONSENT OF ALLIED MOTION TECHNOLOGIES INC. AND ITS SUBSIDIARIES.

NO	REVISION	DATE	BY	ANGULAR
D	6521 Updated Fuseblock	12/14/23	JRN	.XX ± .25 .XXX ± .10
C	5868 Update CNT, Wire Range	02/16/22	JRN	FRACTIONAL ± 1/32
B	5348 Updated To Deeper Hoods In Front	08/11/20	JRN	± 1°
A	As Designed	04/23/20	JRN	

**TOLERANCES (EXCEPT AS NOTED)**

**TCI** An Allied Motion Company

W132N10611 Grant Drive  
 Germantown, WI 53022  
 © 2022 TCI, LLC

HarmonicGuard Low Capacitance  
 500HP, 480/3/60, Type 3R, JCI, PQconnect

DRN BY: JRN DATE: 04/23/20  
 SCALE: 1/12 APRVD: SIZE: C

108196DG  
 SHT.1 OF 1