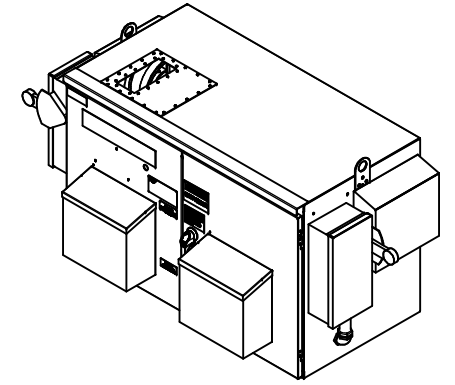


UNIT SPECIFICATIONS						
HP	VOLT	PHASE	HZ	HARMONIC	KVAR	AMPS
500	480	3	60	5TH	75	670

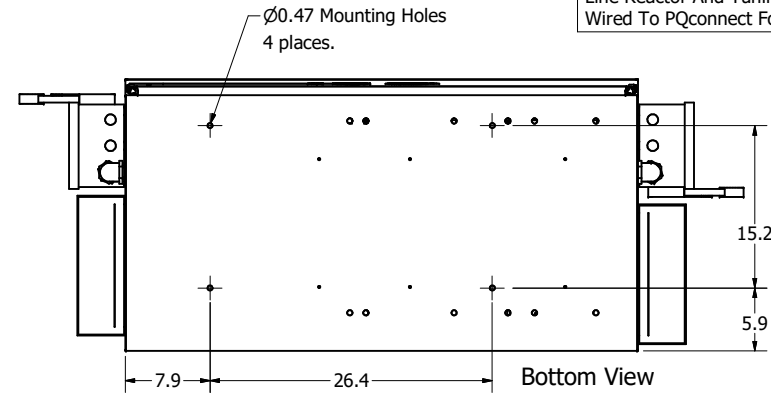
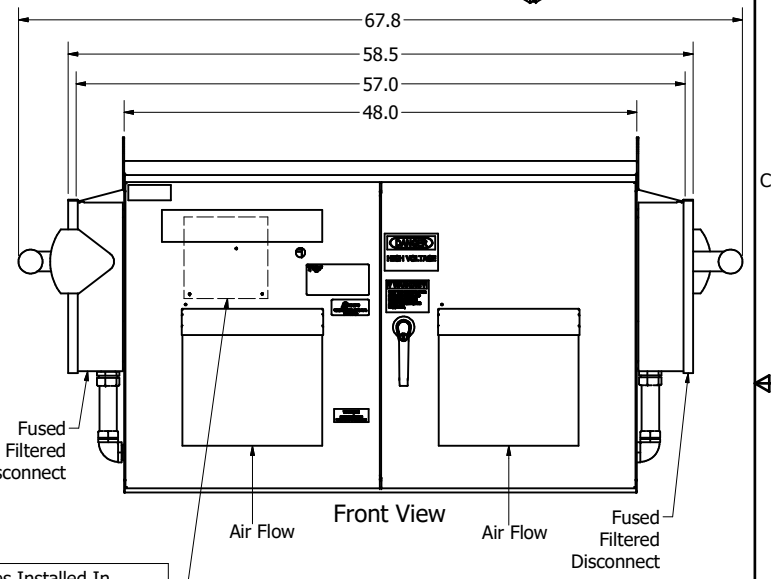
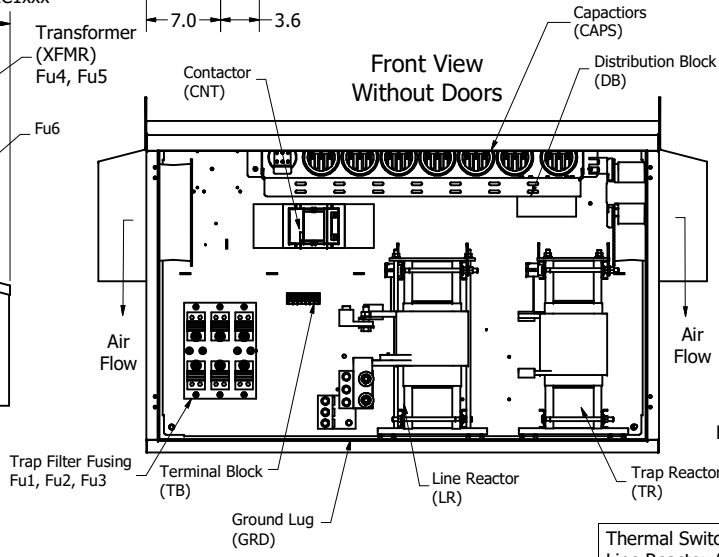
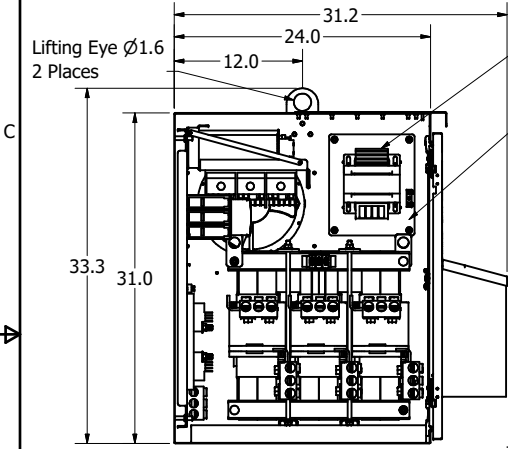
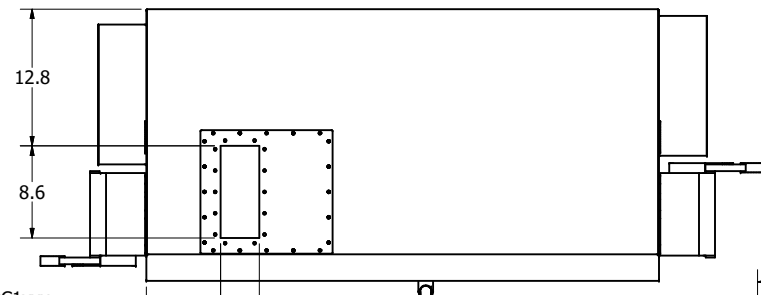
SCHMATIC : 31462-L2 Top View



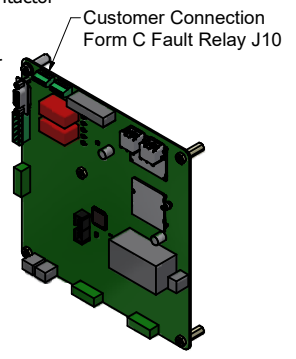
GROUND LUG:  
WIRE RANGE - THREE 600MCM-2  
TIGHTENING TORQUE 500 LB-IN.

L1 L2 L3 T1 T2 T3  
CUSTOMER CONNECTIONS:  
WIRE RANGE - THREE 600MCM-2  
TIGHTENING TORQUE 500 LB-IN.

- Notes:
1. Customer is responsible for installation to meet all national and local electrical codes.
  2. Use only hubs or fittings that comply with UL514B for type 3R enclosures.
  3. Approx. WT LBS : 1000
  4. Enclosure Color: RAL 7006 Beige Grey
  5. PQconnect Programming Model: Custom HGL0500AWxC1xxx



Thermal Switches Installed In Line Reactor And Tuning Reactor Wired To PQconnect For Monitoring



THE INFORMATION AND DESIGNS CONTAINED IN THIS DRAWING ARE CONFIDENTIAL AND THE PROPRIETARY PROPERTY OF ALLIED MOTION TECHNOLOGIES INC. AND ITS SUBSIDIARIES. NEITHER THIS DESIGN NOR ANY INFORMATION CONTAINED IN THIS DRAWING MAY BE REPRODUCED OR DISCLOSED TO OTHERS WITHOUT THE EXPRESS WRITTEN CONSENT OF ALLIED MOTION TECHNOLOGIES INC. AND ITS SUBSIDIARIES.

NO	REVISION	DATE	BY	SCALE
C	6521-1 Update Fuseblock	12/20/23	JRN	
B	6502 Further Detail Widths	11/28/23	JRN	
A	As Designed	11/13/23	JRN	
NO				

TOLERANCES (EXCEPT AS NOTED)		SCALE	
DECIMAL	.XX ± .03 .XXX ± .010	1/12	AS SHOWN
FRACTIONAL	± 1/32		
ANGULAR	± 1°		

**TGI** W182N10611 (Rev. 11/23)  
An *Avtron* Motion Company  
Type 3R, JCI, PQ, 2x40A Fused Filtered Disconnect  
DATE: 11/13/23  
108196-03DG  
SHT 1 OF 1