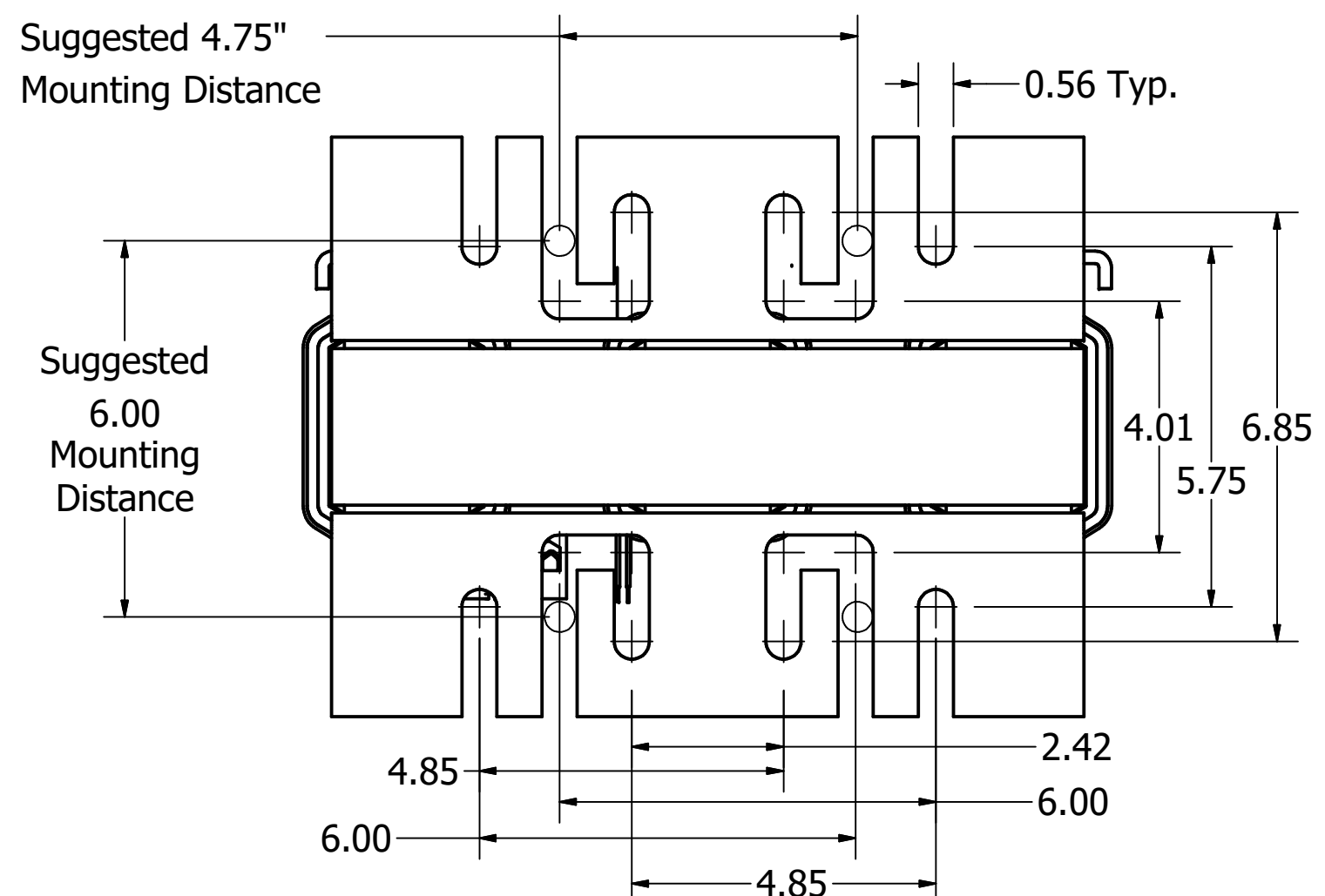
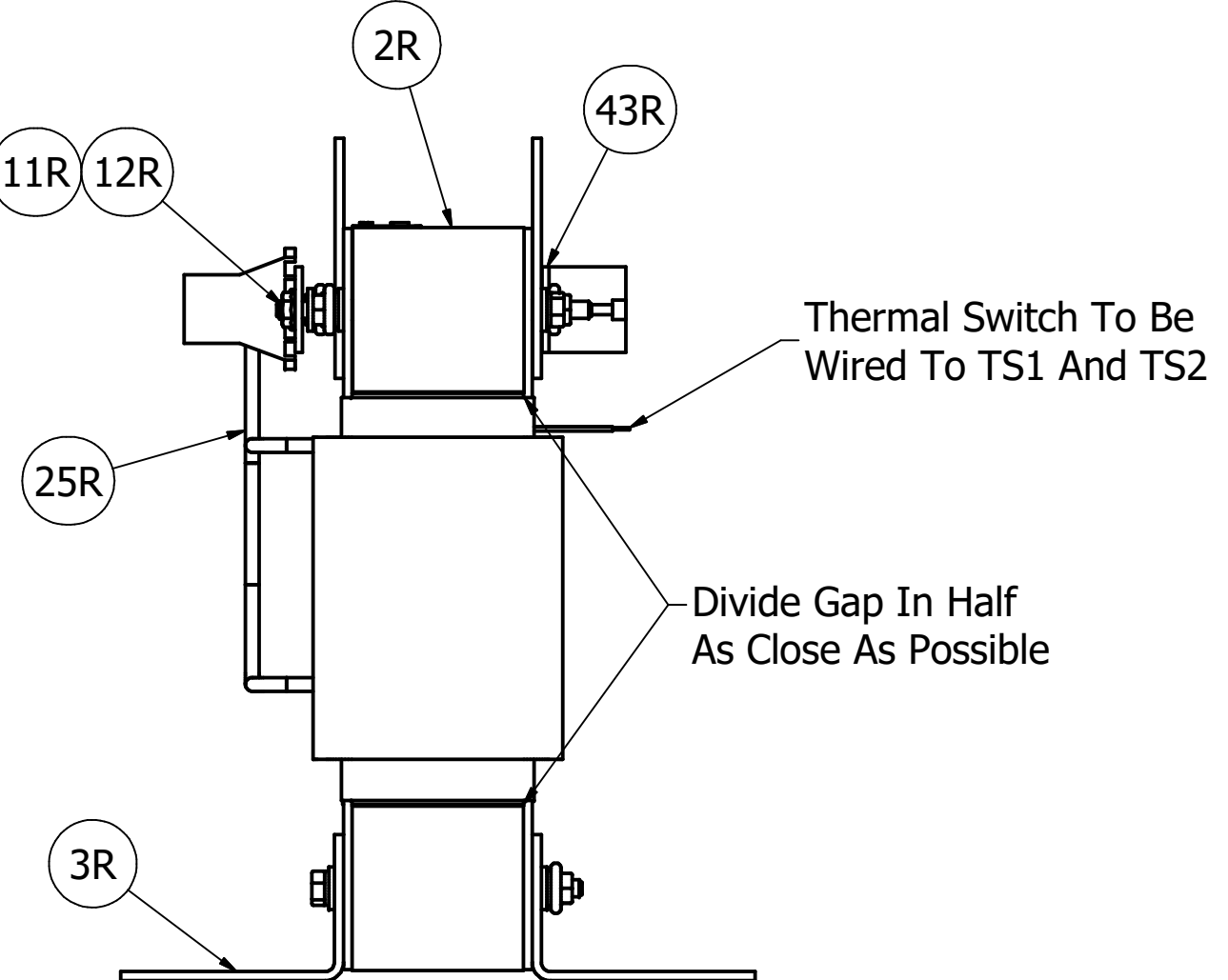
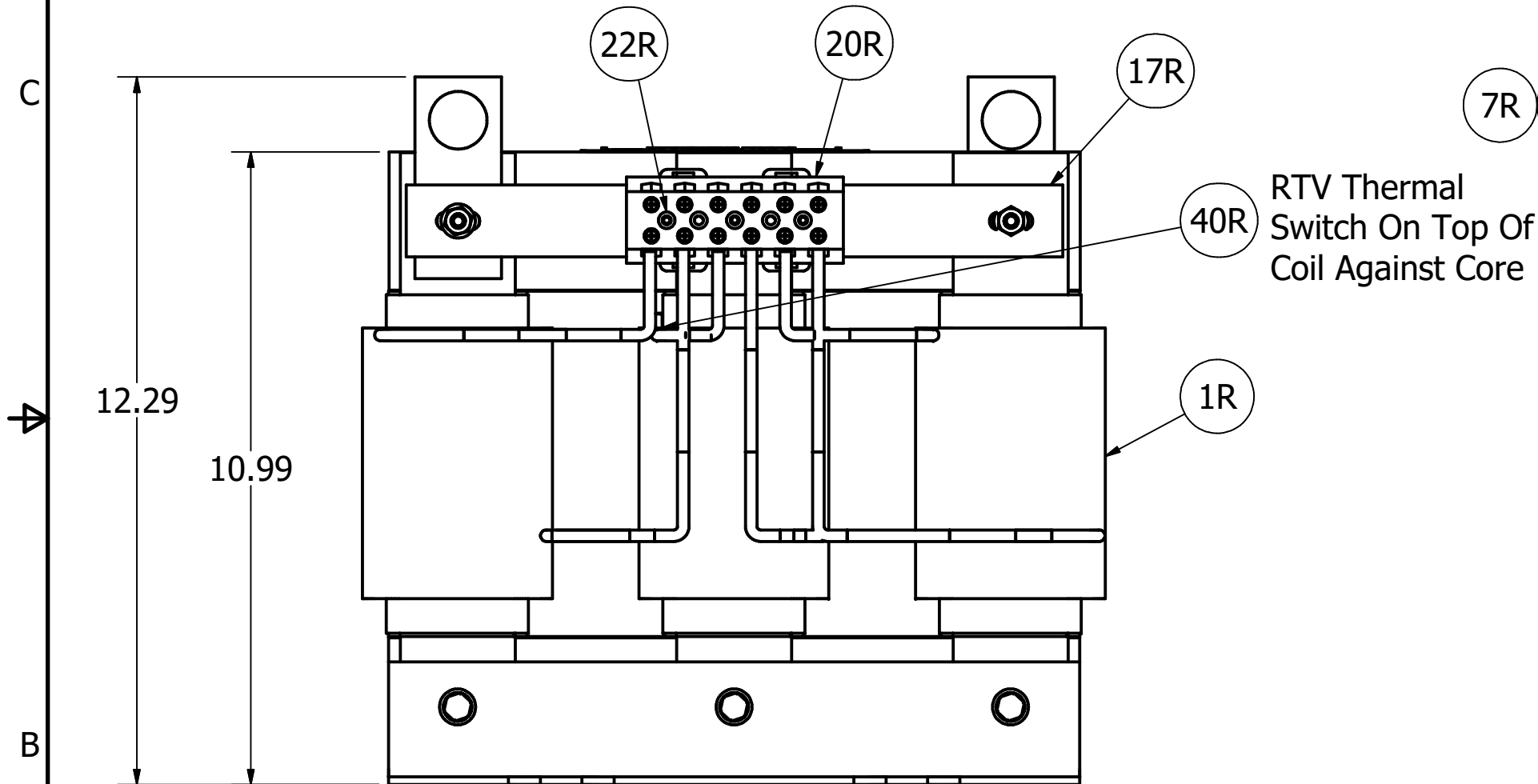
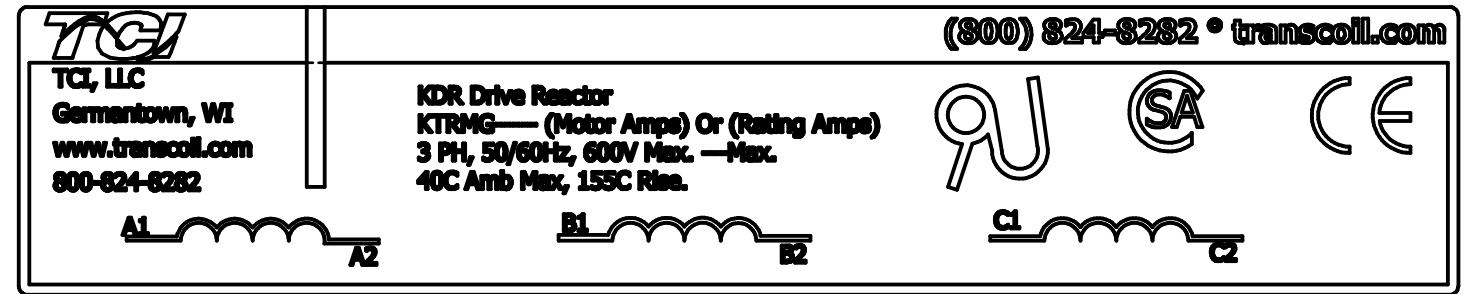


Wire Range: 1- 4 AWG. Torque : 35 LBS-IN (3.95 Nm)  
 6- 14 AWG. Torque : 30 LBS-IN (3.39 Nm)  
 16- 20 AWG. Torque : 25 LBS-IN (2.28 Nm)  
 22 AWG. Torque : 20 LBS-IN (2.26 Nm)

(Customer Connections)  
 Markings On Terminal Block  
 For Reference Only.

TCI Part Number	Rated Amps (A)	Rated Voltage (V)	Hz	---uH ±5%	Approx Weight (LBS)	Measured Gap	Item Number
KTRMG55C	55	600	60	1090	88	.220	13R, 14R



Strip 2.40 2.50 Stack

Hi-Pot Volt	Dip
2650	468-2

Material(s) Shall be RoHS Compliant

TOLERANCES (EXCEPT AS NOTED)				TCI W132 N10611 Grant Drive Germantown, WI 53022		
DECIMAL				KTRMG L Frame, Terminal Block Reactor Drawing		
.XX ± .03						
.XXX ± .010						
FRACTIONAL				DRN BY JRN DATE 07/31/19 108083-1		
± 1/32				SCALE 3/8 APRVD: SIZE C SHT. 1 OF 1		
ANGULAR						
± 1°						
A	Drawings Combined, TS Added	07/31/19	JRN			
NO	REVISION	DATE	BY			