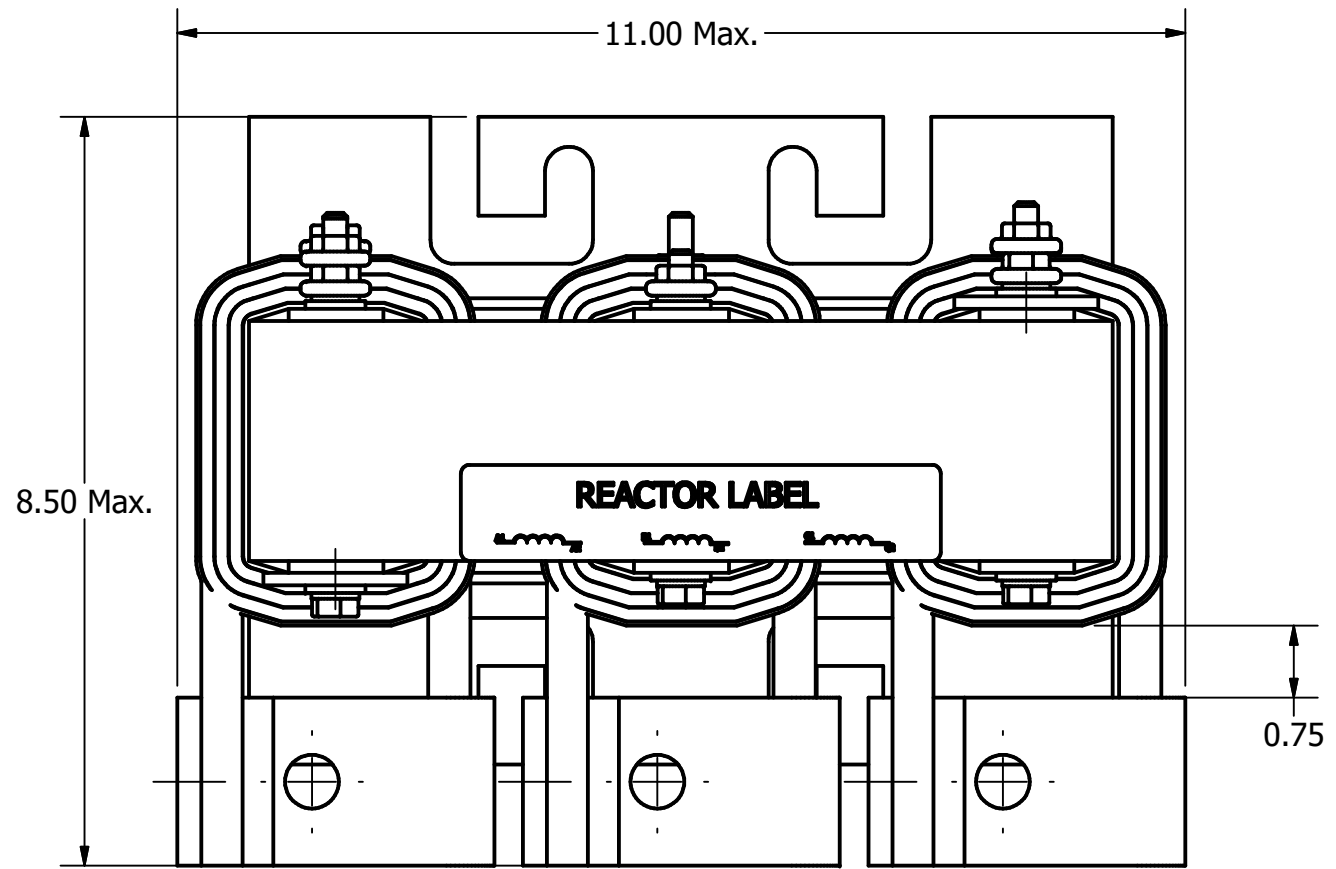


4

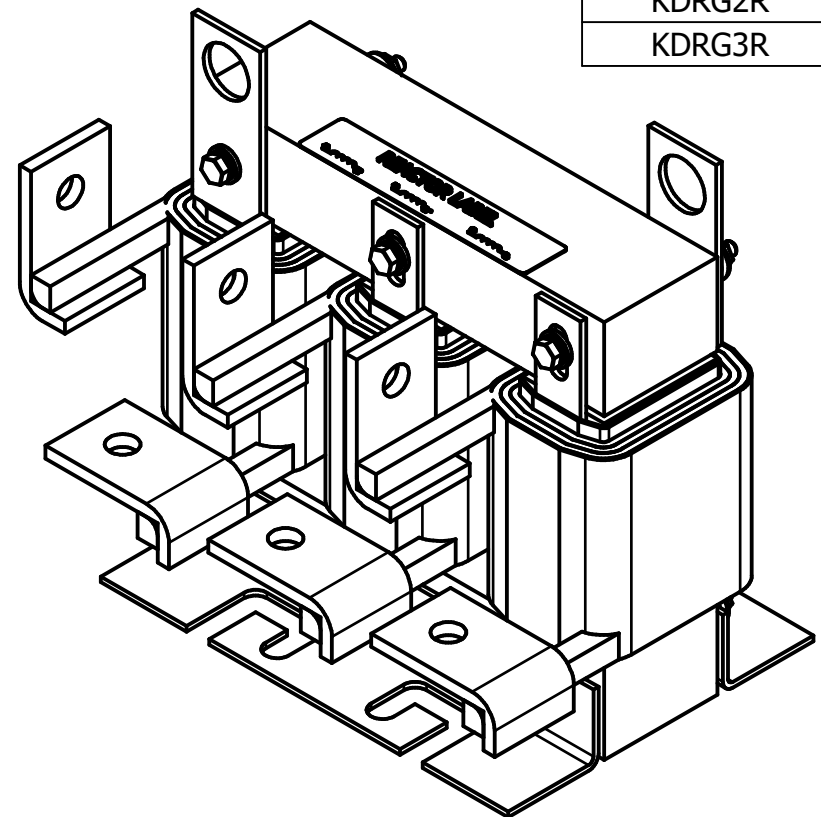
3

2

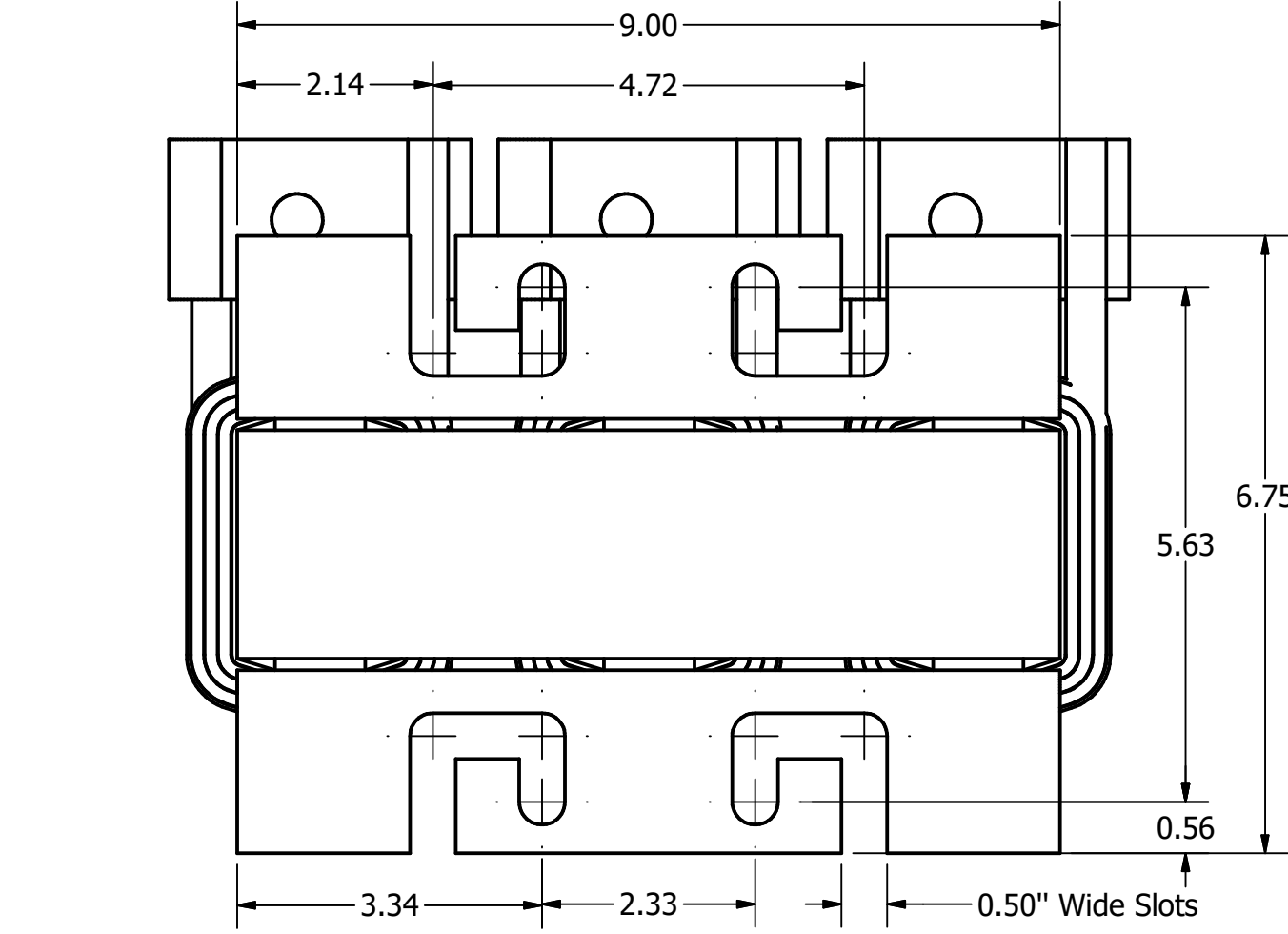
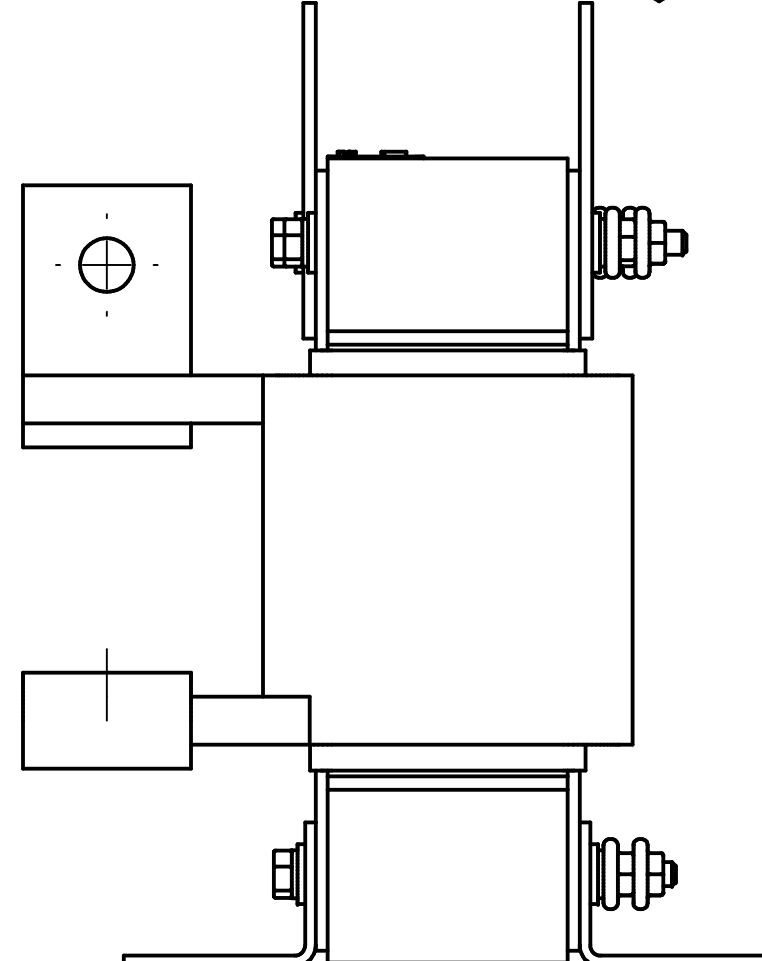
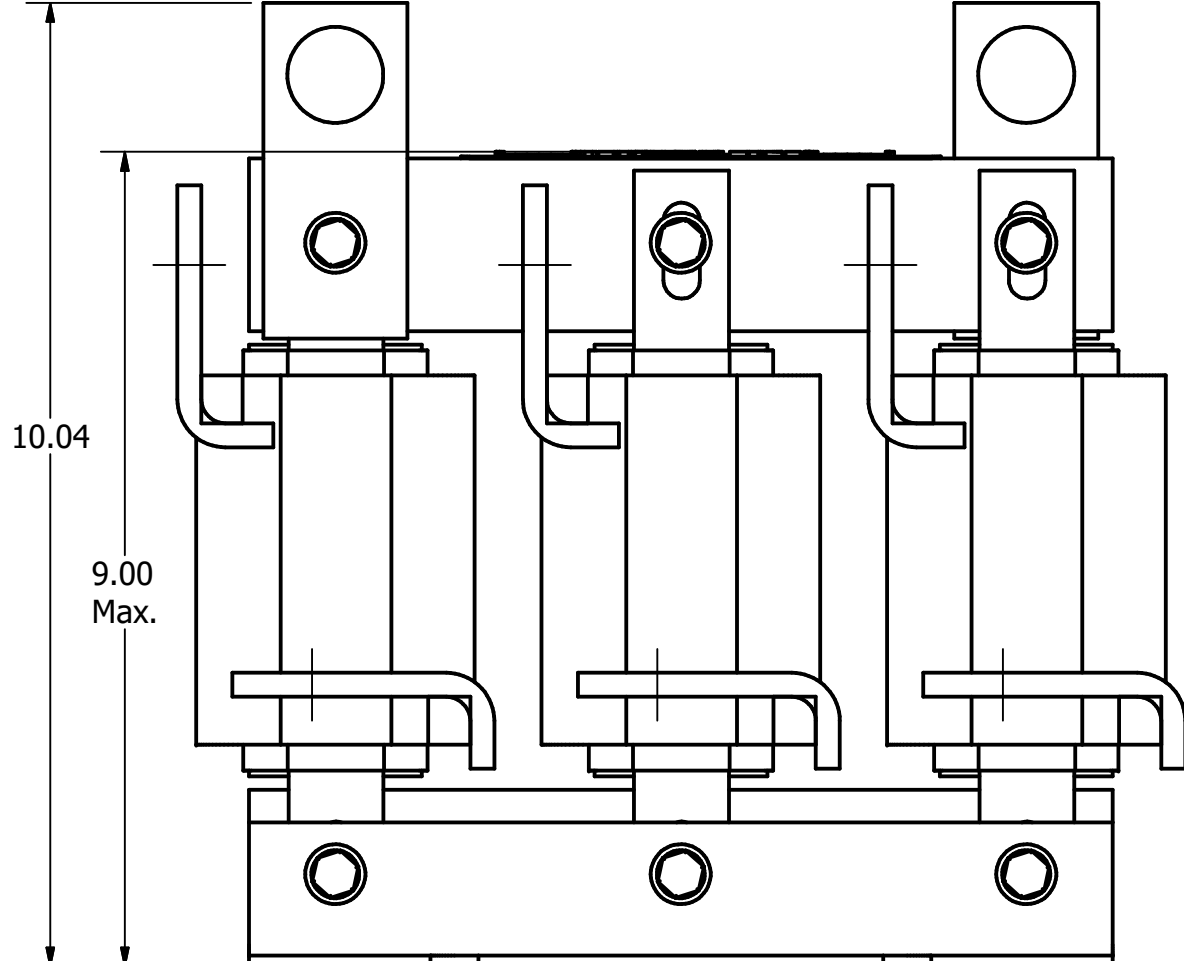
1



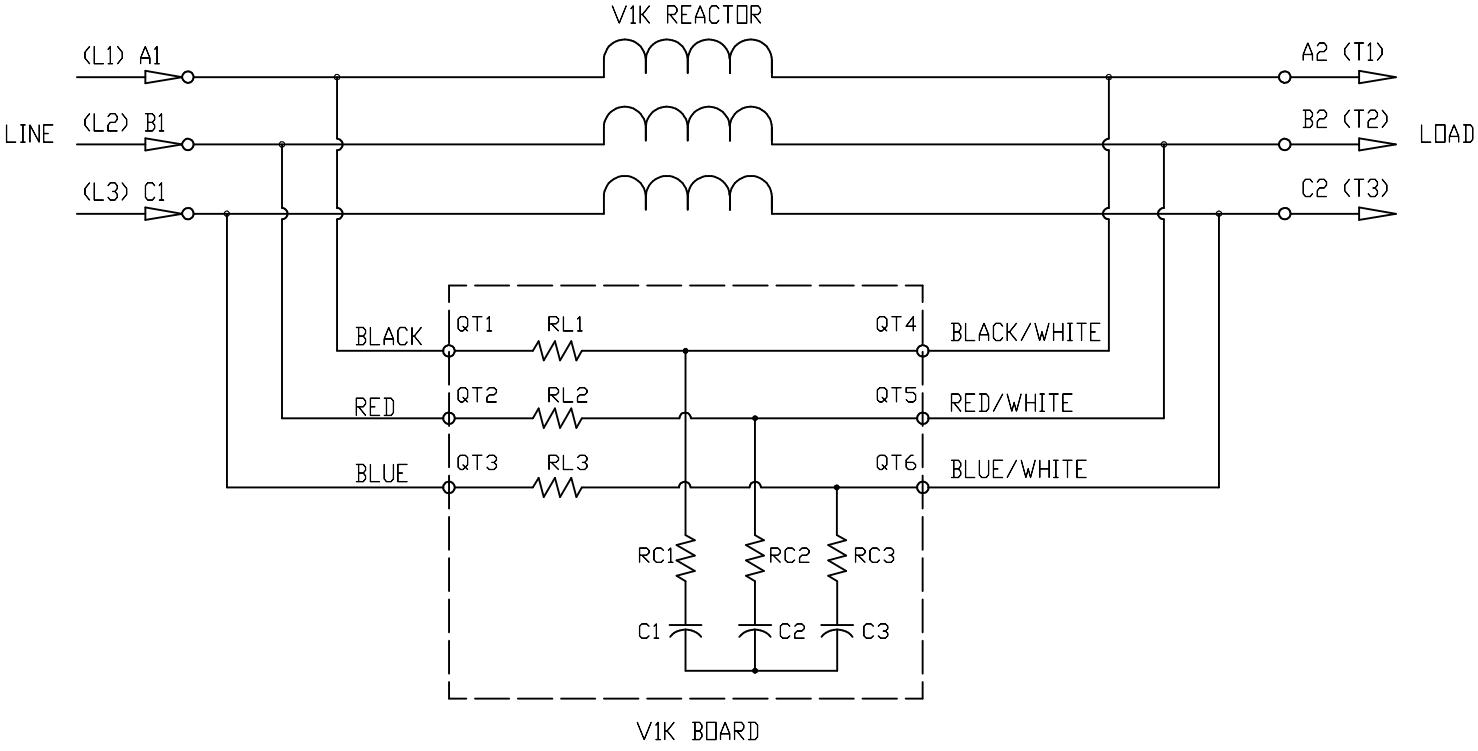
V1k Reactors								
TCI Part#	Motor Amps (A)	Maximum Amps (A)	Max Voltage	Total Loss (W)	mH	Weight (LBS)	Terminal Hole Size (Inches)	Available Lug Kit
KDRG2R	305	305	600	225	0.040	65	0.56	SLK13
KDRG3R	362	362	600	315	0.040	65	0.56	SLK13



- Notes: 1. UL file number: cULus Listed File E116124.  
 2. V1K Drive Reactors Comply With The Thermal and Altitude Standards Set Forth by NEMA ST20-1992.  
 3. V1K IOM Manual Part Number 31259  
 4. Material(s) Shall be RoHS Compliant  
 5. Customer Is Responsible For Installation To Meet All National And Local Electrical Codes.



V1K SCHEMATIC



Customer Is Responsible For Installation to Meet All National And Local Electrical Codes. Material(s) Shall be RoHS Compliant

TCI, LLC CLAIMS PROPRIETARY RIGHTS IN THE MATERIAL HEREIN DISCLOSED. IT IS SUPPLIED WITHOUT PREJUDICE TO ANY PATENT RIGHTS OF TCI AND MAY NOT BE REPRODUCED OR USED TO MANUFACTURE ANYTHING SHOWN THEREIN WITHOUT WRITTEN PERMISSION FROM TCI.				TOLERANCES (EXCEPT AS NOTED) DECIMAL	W132 N10611 Grant Drive Germantown, WI 53022	
				.XX ± .25 .XXX ± .10		
	C	4653 Max Voltage Added. IOM Updated	02/28/19	JRN	FRACTIONAL ± 1/16	KDR, VIK Output Inductor 305-362 Amps, 480V
	B	Added Lug Kit And Schematic	09/10/18	JRN	ANGULAR ± 1°	
	A	As Designed	08/22/18	JRN		
NO	REVISION	DATE	BY	SCALE: 1/2	107843DG SHT.1 OF 1	

4

3

2

1