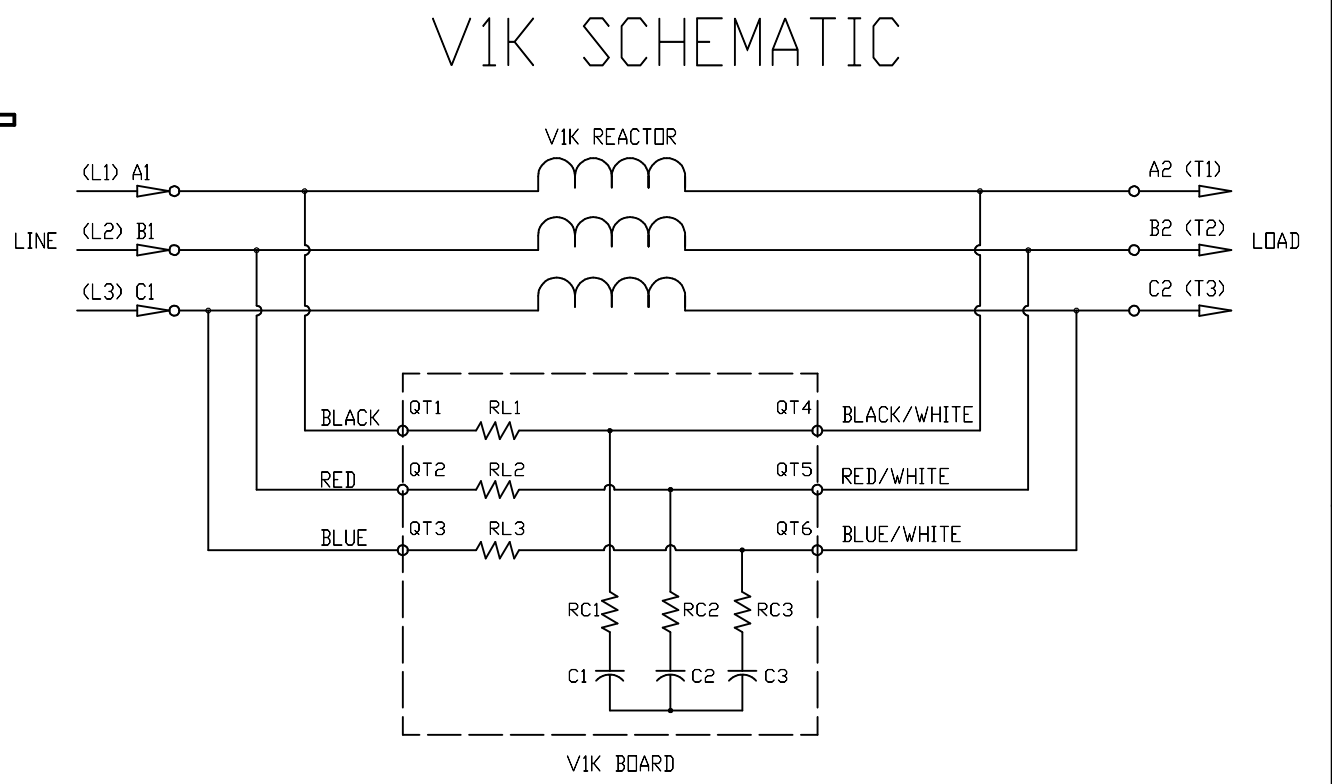
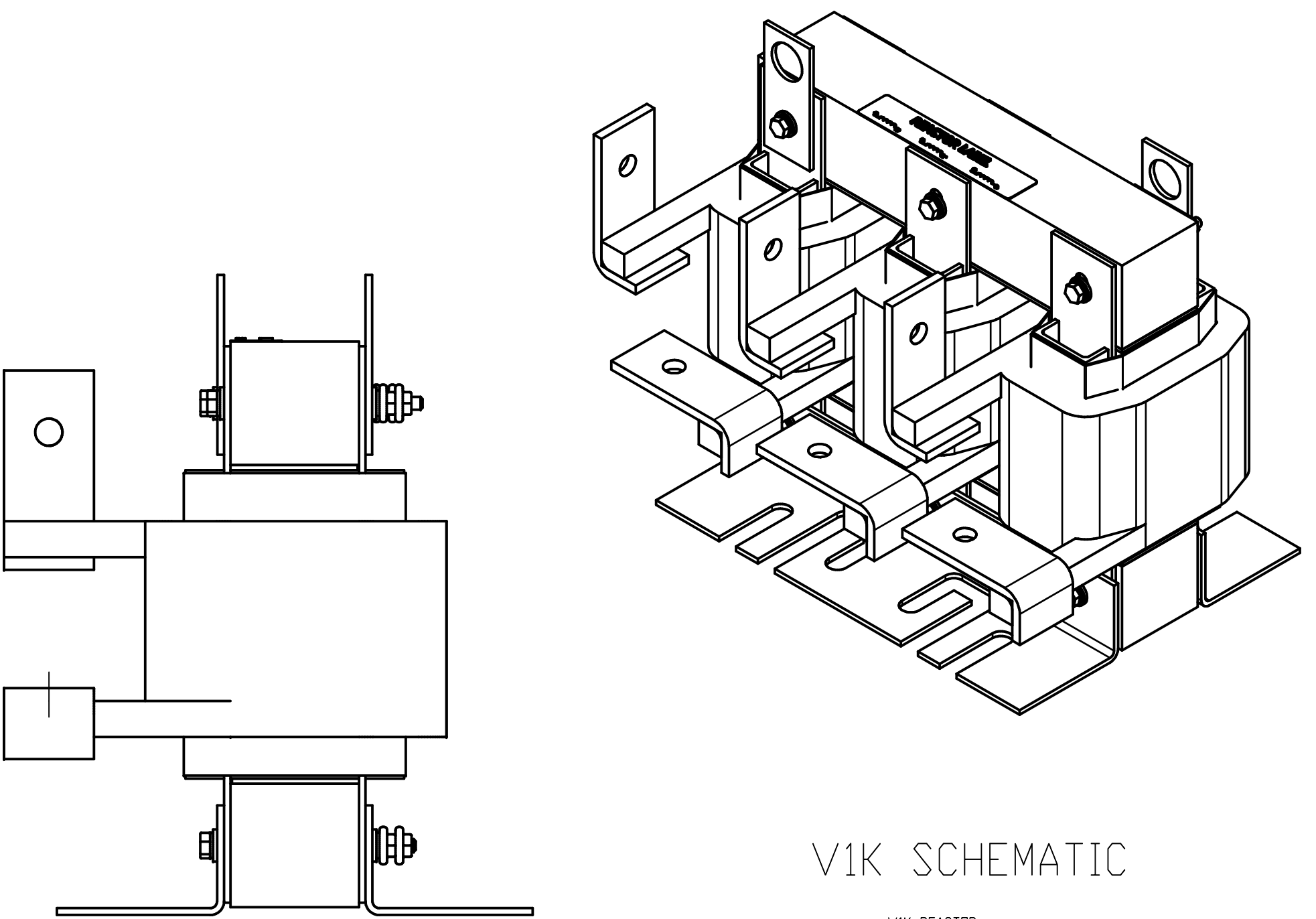


V1K Reactors								
TCI Part#	Motor Amps (A)	Maximum Amps (A)	Max Voltage	Total Loss (W)	mH	Weight (LBS)	Terminal Hole Size (Inches)	Available Lug Kit
KDRL3R	600	600	600	550	0.028	115	0.53	SLK14

- Notes:
1. UL file number: cULus Listed File E116124.
 2. V1K Drive Reactors Comply With The Thermal and Altitude Standards Set Forth by NEMA ST20-1992.
 3. V1K IOM Manual Part Number 31259
 4. Material(s) Shall be RoHS Compliant
 5. Customer Is Responsible For Installation To Meet All National And Local Electrical Codes.



Customer Is Responsible For Installation to Meet All National And Local Electrical Codes. Material(s) Shall be RoHS Compliant

TCI, LLC CLAIMS PROPRIETARY RIGHTS IN THE MATERIAL HEREIN DISCLOSED. IT IS SUPPLIED WITHOUT PREJUDICE TO ANY PATENT RIGHTS OF TCI AND MAY NOT BE REPRODUCED OR USED TO MANUFACTURE ANYTHING SHOWN THEREIN WITHOUT WRITTEN PERMISSION FROM TCI.				TOLERANCES (EXCEPT AS NOTED) DECIMAL	TCI W132 N10611 Grant Drive Germantown, WI 53022	
				.XX ± .25 .XXX ± .10		
	C	4653 Max Voltage Added. IOM Updated	02/28/19	JRN	FRACTIONAL ± 1/16	KDR, V1K Output Inductor 600 Amps 480V
	B	Available Lug Kit Added	09/10/18	JRN	ANGULAR ± 1°	
A	As Designed	8/13/18	DSW		DRN BY: DSW DATE: 8/13/18 SCALE: 1/2 APRVD: 107833DG	
NO	REVISION	DATE	BY		SIZE: C SHT. 1 OF 1	