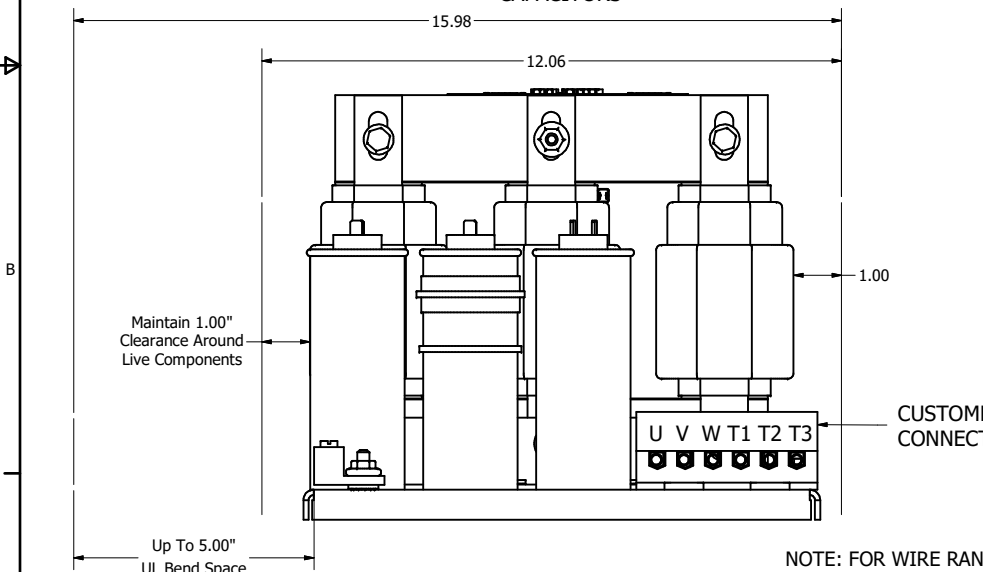
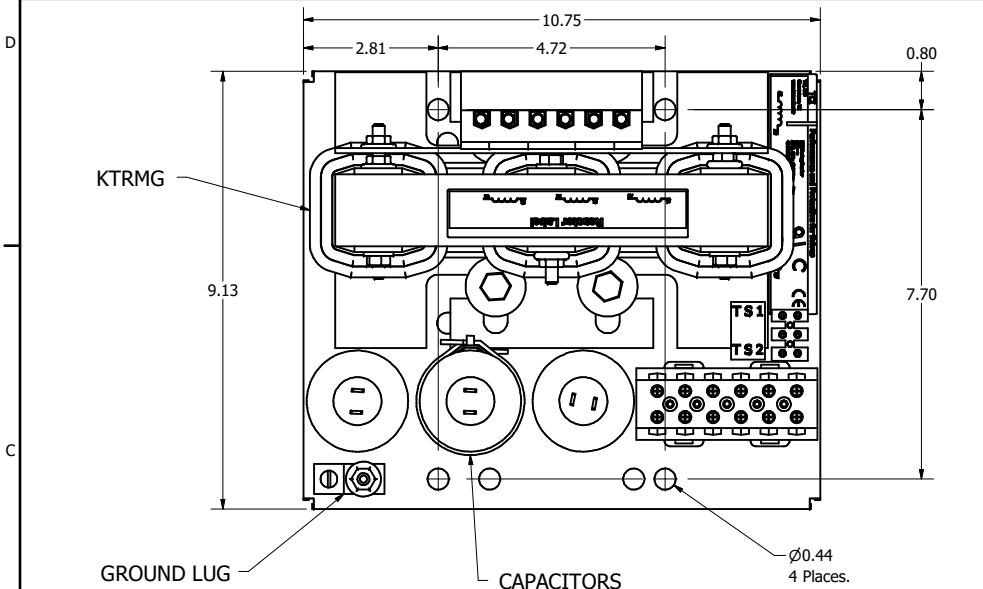
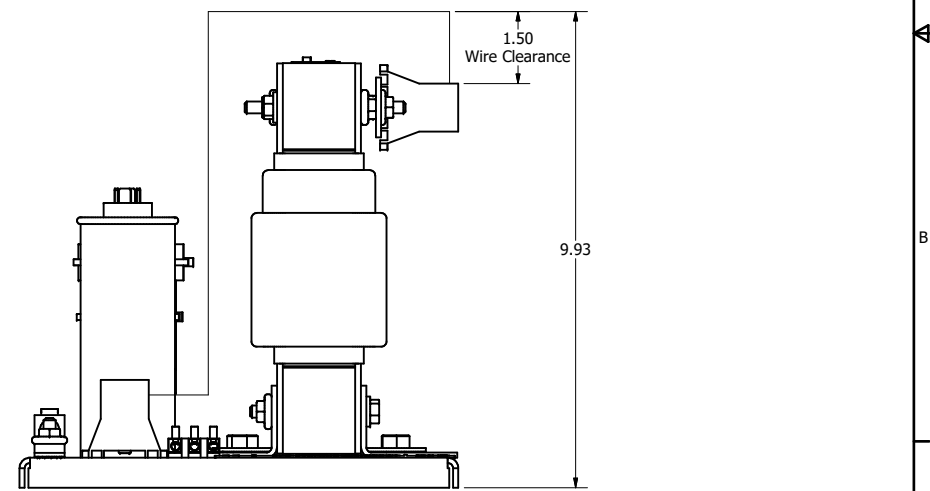
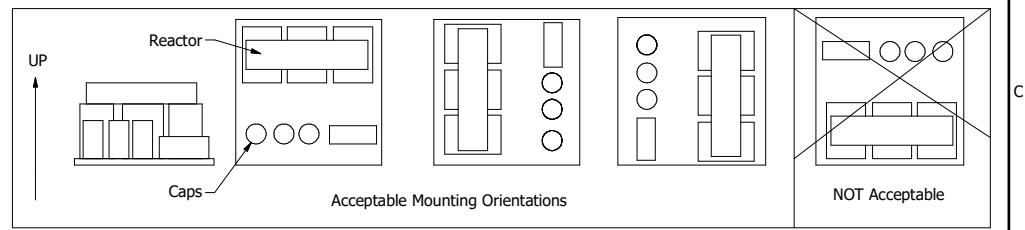
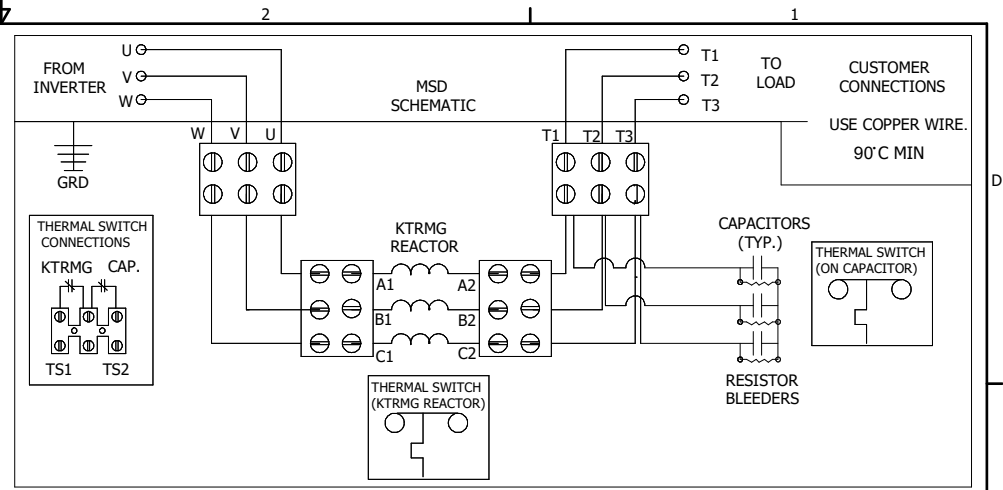


HGP PART NUMBER	HP	VOLT	CURRENT	WEIGHT	TERMINAL BLOCK	GROUND LUG
MSD0023A000	15	480V	23 Amps	50LBS	WIRE RANGE: 1-22AWG	WIRE RANGE: 1/0-14AWG
MSD0030A000	20	480V	30 Amps	50LBS	WIRE RANGE: 1-22AWG	WIRE RANGE: 1/0-14AWG
MSD0035A000	25	480V	35 Amps	50LBS	WIRE RANGE: 1-22AWG	WIRE RANGE: 1/0-14AWG



NOTE: FOR WIRE RANGE AND TORQUE INFORMATION SEE IOM MANUAL.



CUSTOMER IS RESPONSIBLE FOR PROPER COOLING OF FILTER COMPONENTS CAPACITORS MAXIMUM AMBIENT 50°C

CUSTOMER IS RESPONSIBLE FOR INSTALLATION TO MEET ALL NATIONAL AND LOCAL ELECTRICAL CODES.

**WARNING**  
WAIT TWO MINUTES AFTER POWER IS TURNED OFF BEFORE OPENING TO ALLOW FOR CAPACITOR DISCHARGE.

CAPACITOR DISCHARGE LABEL TO SHIP WITH PANEL

				TOLERANCES (EXCEPT AS NOTED)		TCI		W132 N10611 Grant Drive Germantown, WI 53022	
				DECIMAL					
				.XX ± .03					
				.XXX ± .010					
				FRACTIONAL					
C	4670 23A And 30A Added	03/08/19	JRN	± 1/32					
B	Clearances And Orientations Detailed	10/10/18	JRN	ANGULAR					
A	As Designed	06/15/18	JRN	± 1°					
NO	REVISION	DATE	BY						

DRN BY: JRN DATE: 06/15/18 107748DG  
SCALE: 1/2 DRN: HSE

SHT 1 OF 1