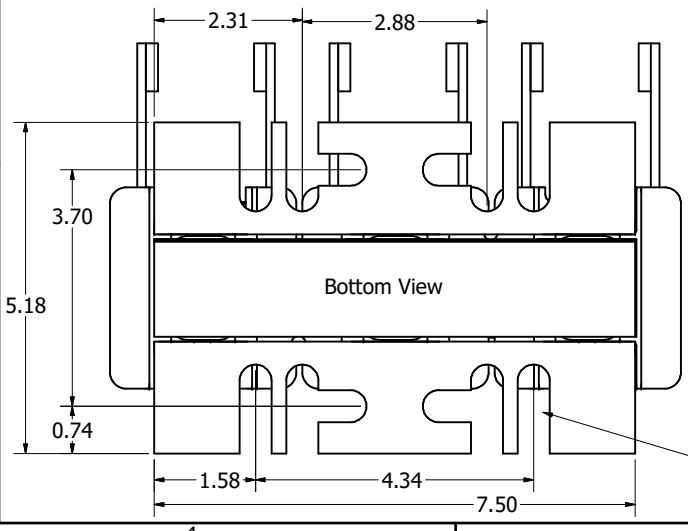
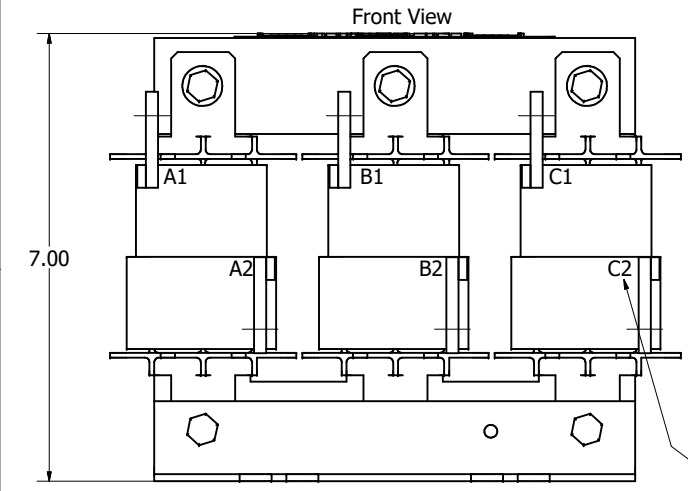
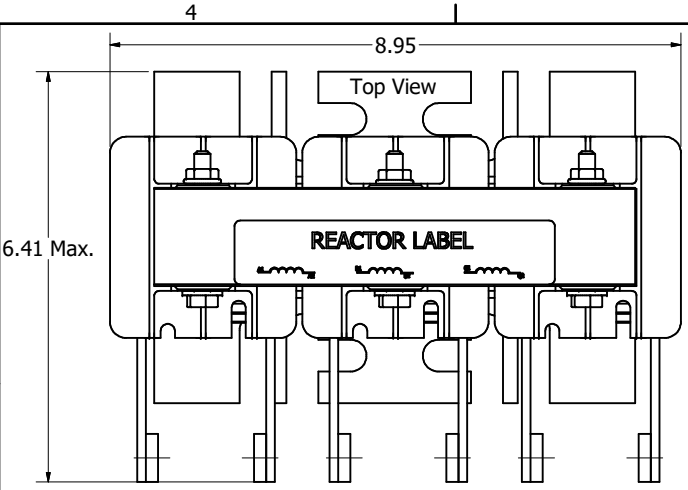
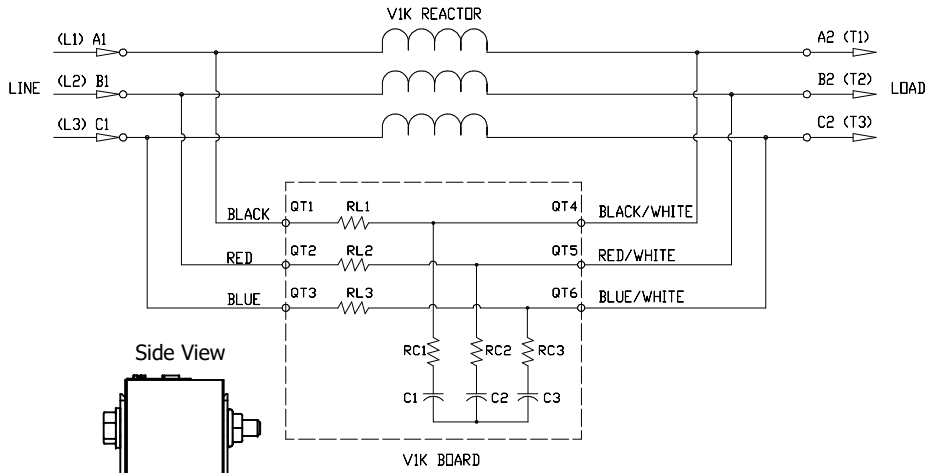
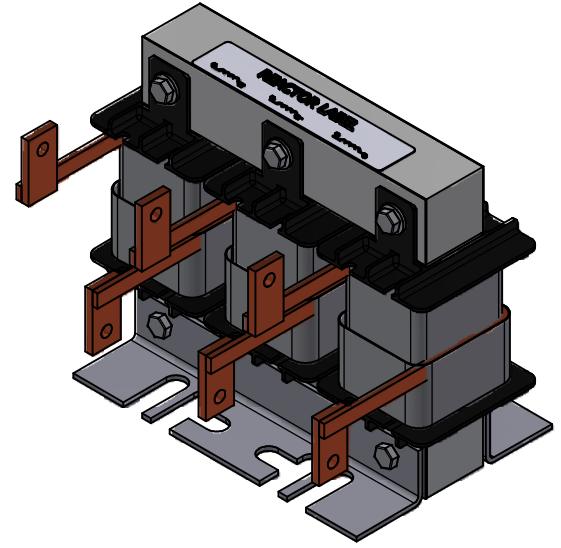
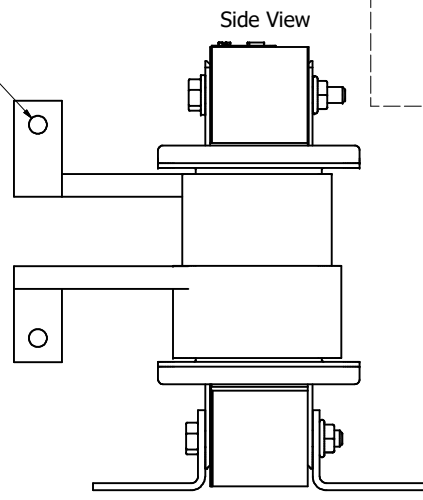


V1k Reactors								
TCI Part#	Motor Amps (A)	Maximum Amps (A)	Max Voltage	Total Loss (W)	---uH+/-10%	Weight (LBS)	Terminal Hole Size (Inches)	Available Lug Kit
KDRF2R	110	110	600	118	120	21	0.28	SLK10

V1K SCHEMATIC



0.28 Dia Holes
6 Places



- Notes:
1. UL file number: cULus Listed File E116124.
 2. V1K Drive Reactors Comply With The Thermal and Altitude Standards Set Forth by NEMA ST20-1992.
 3. V1K IOM Manual Part Number 31259
 4. Material(s) Shall be RoHS Compliant
 5. Customer Is Responsible For Installation To Meet All National And Local Electrical Codes.

THE INFORMATION AND DESIGNS CONTAINED IN THIS DRAWING ARE CONFIDENTIAL AND THE PROPRIETARY PROPERTY OF ALLIED MOTION TECHNOLOGIES INC. AND ITS SUBSIDIARIES. NEITHER THIS DESIGN NOR ANY INFORMATION CONTAINED IN THIS DRAWING MAY BE REPRODUCED OR DISCLOSED TO OTHERS WITHOUT THE EXPRESS WRITTEN CONSENT OF ALLIED MOTION TECHNOLOGIES INC. AND ITS SUBSIDIARIES.						TOLERANCES (EXCEPT AS NOTED) DECIMAL .XX ± .25 .XXX ± .10		 An Official Motors Company KDR, V1K Output Inductor F Frame	W132N10611 (Rev 13) Fv6 Germantown, WI 53022 © 2021 TCI, LLC
B	6516, Terminal Change To Flag	12/14/2023	DSW	FRACTIONAL ± 1/16	DRN BY JRN	DATE 01/11/2024	107653DG		
A	As Designed	04/09/2018	DSW	ANGULAR ± 1°	SCALE 1:1.5	REVISED			
NO	REVISION	DATE	BY					SHT 1 OF 1	