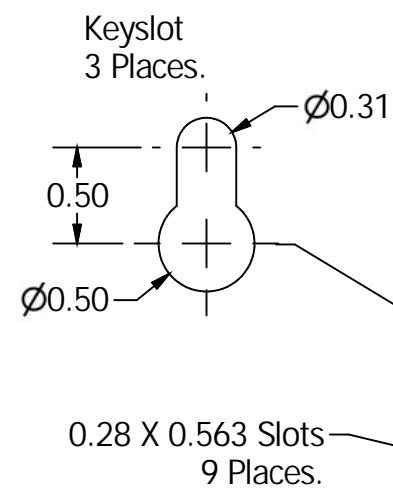
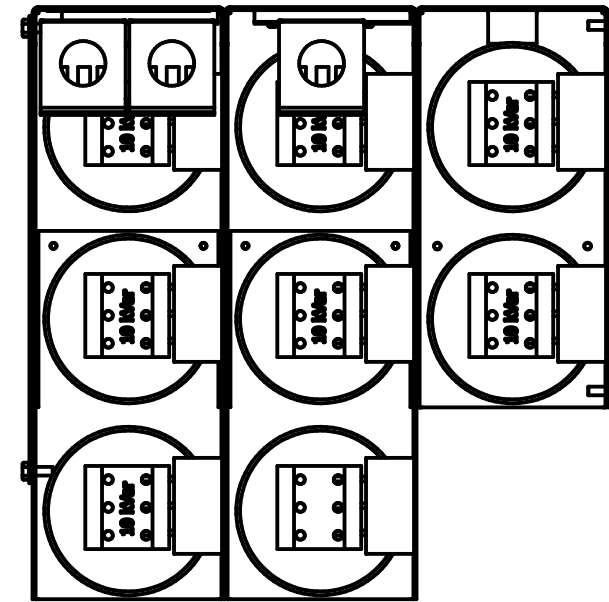
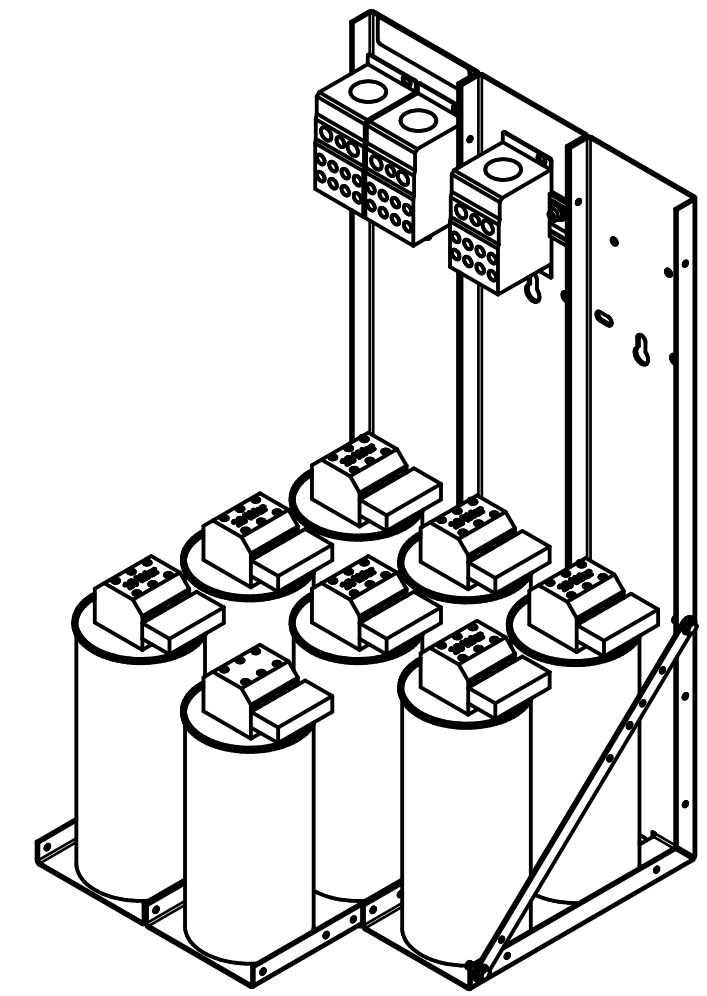


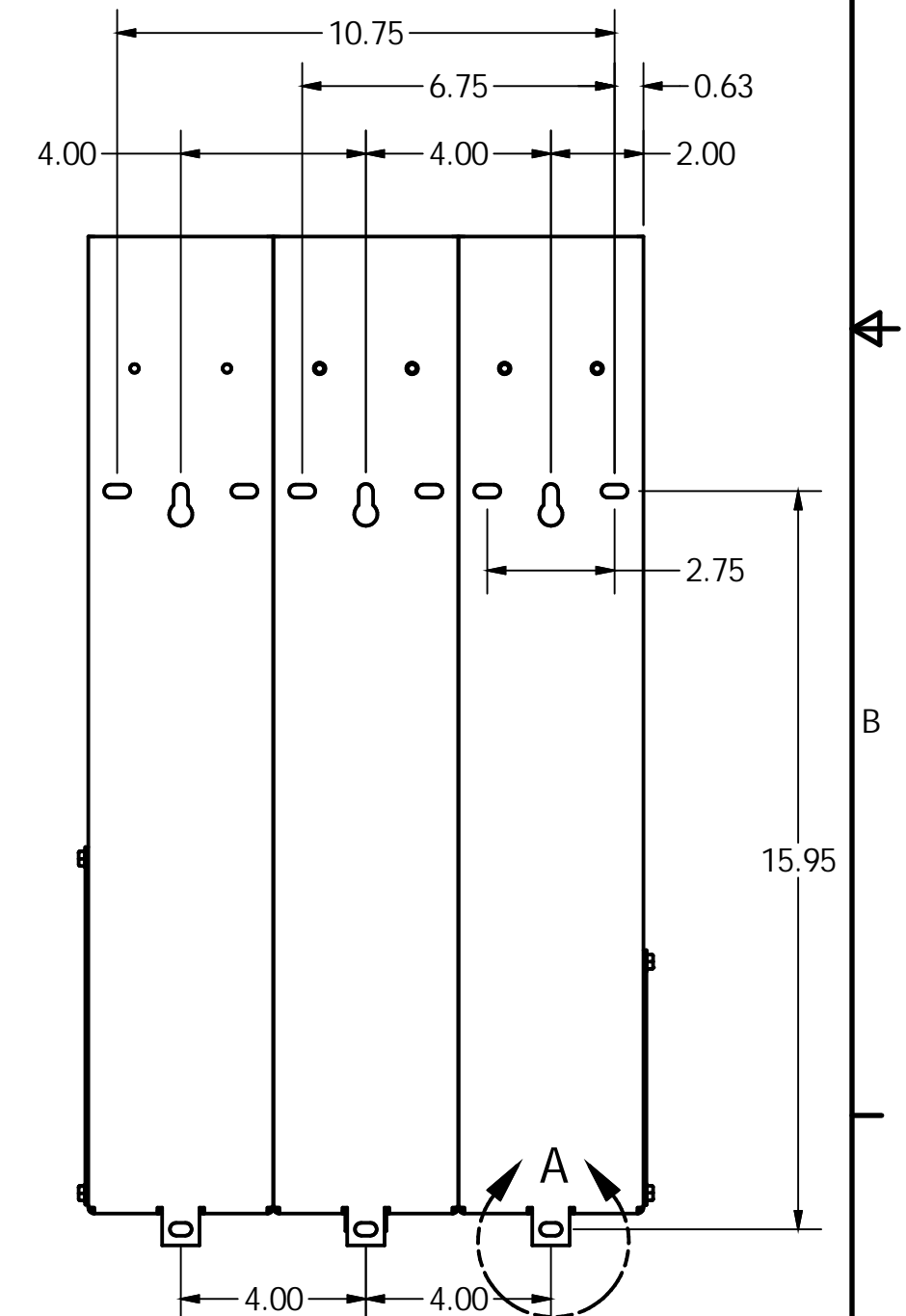
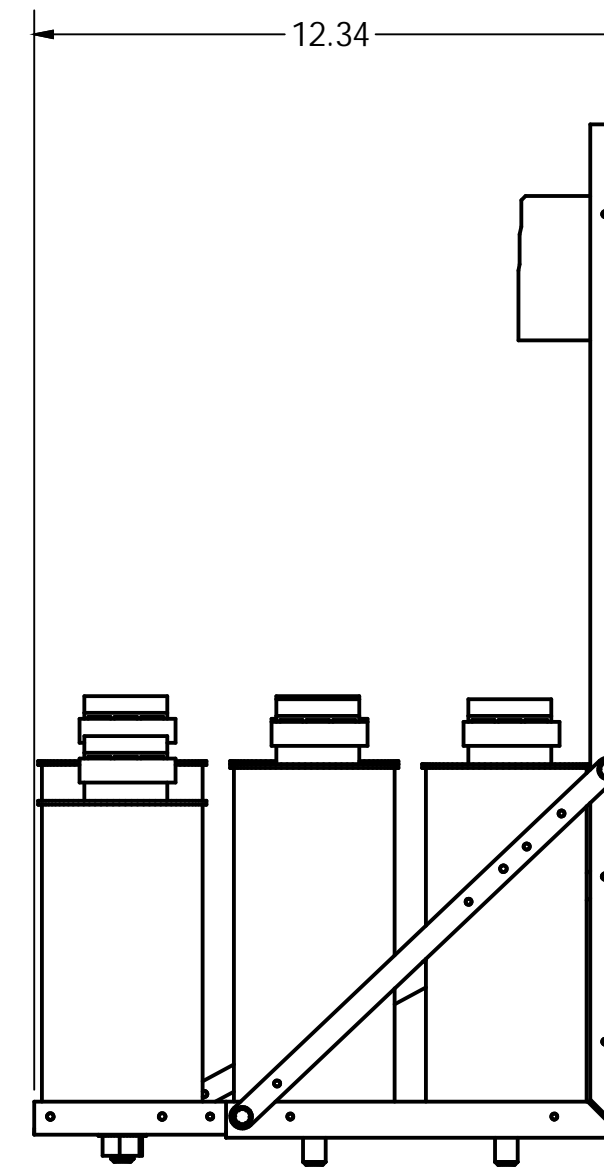
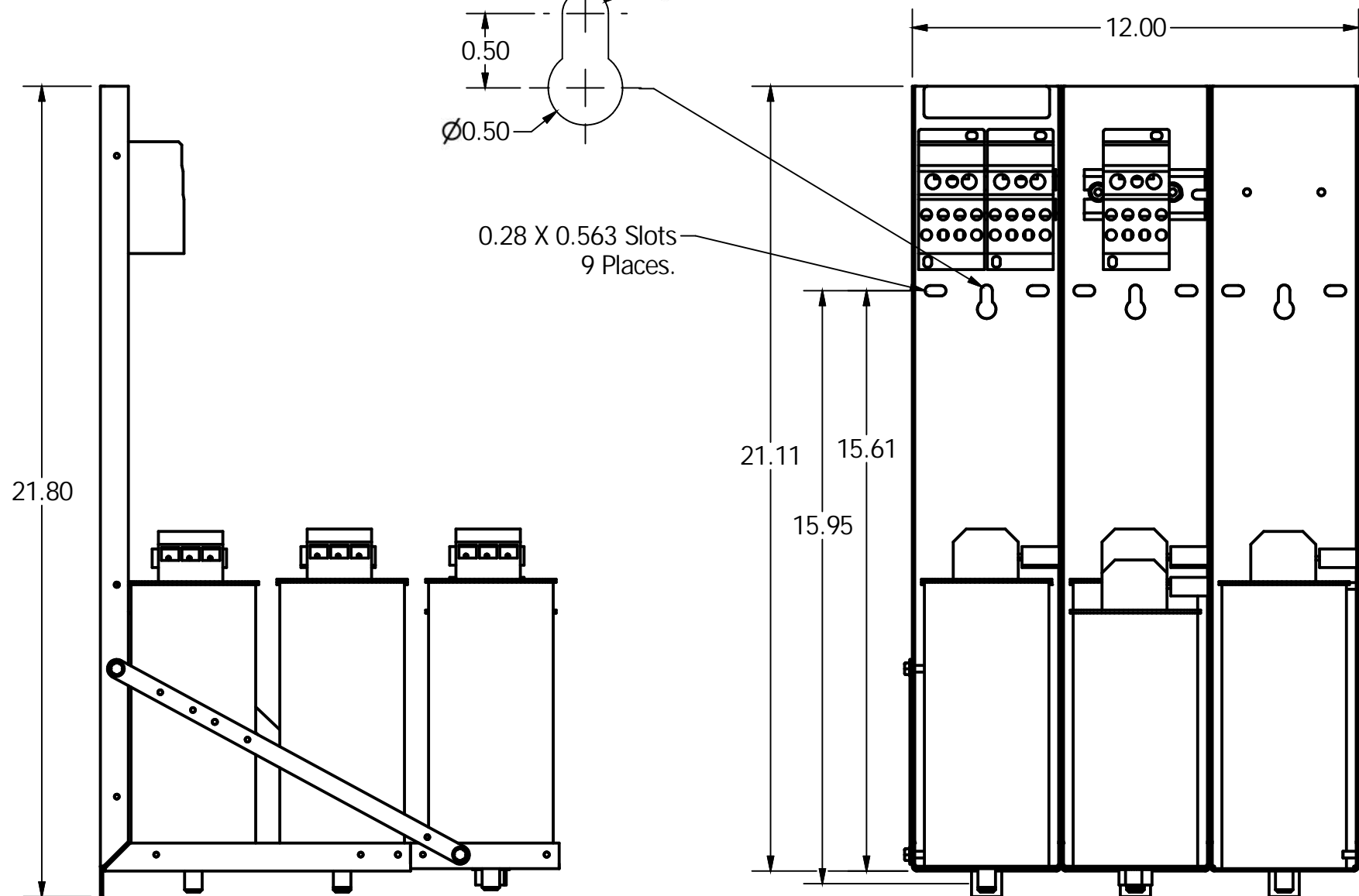
KPCUL076A64, 480V, 76kVar  
 Approx. Weight: 45 Lbs

Customer Input	
Wire Range	Tightening Torque
3/0-350mcm.	230 Lb-In

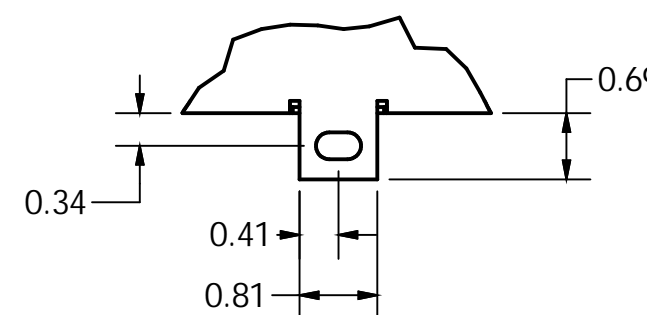
Cap Connection	
Wire Range	Tightening Torque
(2x) 14-2 Awg.	31 Lb-In
(5x) 14-6 Awg.	17.5 Lb-In
(4x) 14-8 Awg.	17.5 Lb-In



0.28 X 0.563 Slots  
 9 Places.



Note: 27908, Manual KPC Installation Guide  
 MUST SHIP WITH EACH ASSEMBLY.



DETAIL A

HOLE TOLERANCE ± .005

				TOLERANCES (EXCEPT AS NOTED)		TCI W132 N10611 Grant Drive Germantown, WI 53022	
				DECIMAL		KPCUL076A64, 76kVar Panelized Caps	
				.XX ± .03			
				.XXX ± .010			
				FRACTIONAL		DRN. BY: JRN DATE: 03/28/18	
				± 1/32		107639DG	
				ANGULAR		SCALE: 1" = 1"	
NO	REVISION	DATE	BY	± 1°		SIZE	SHT. 1 OF 1