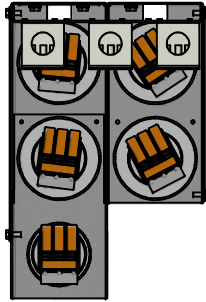


KPCUL048A64, 480V, 183A, 48kVar
Approx. Weight: 28 Lbs

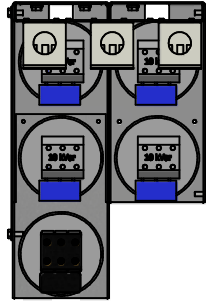
Customer Input	
Wire Range	Tightening Torque
3/0-350mcm	230 Lb-In

**DUE TO CAPACITOR AVAILABILITY
 ASSEMBLY MAY BE SUPPLIED
 AS CONFIGURATION A OR B.**

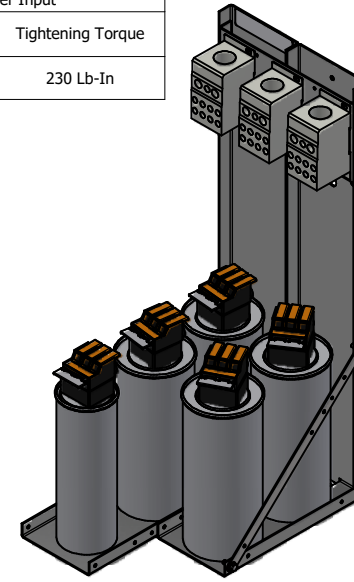
CONFIGURATION A



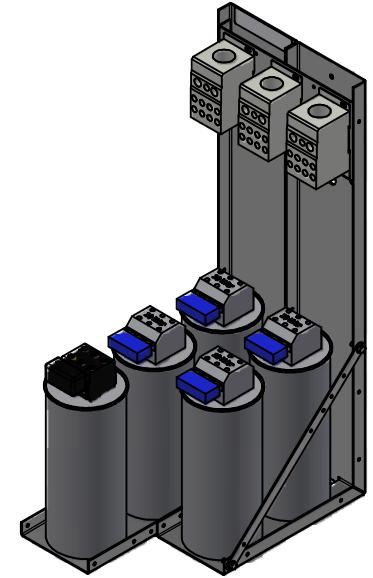
CONFIGURATION B



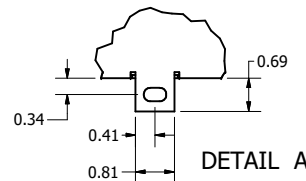
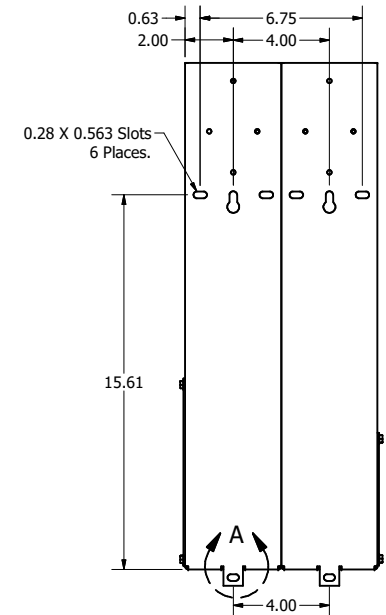
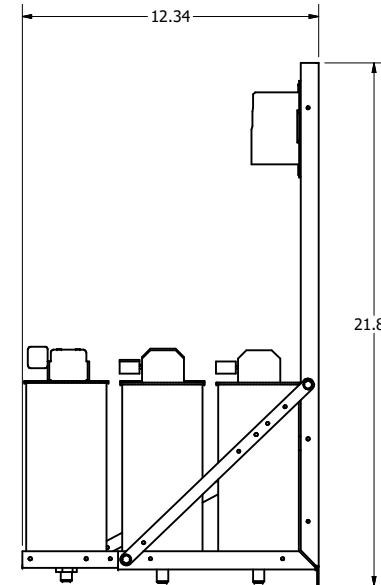
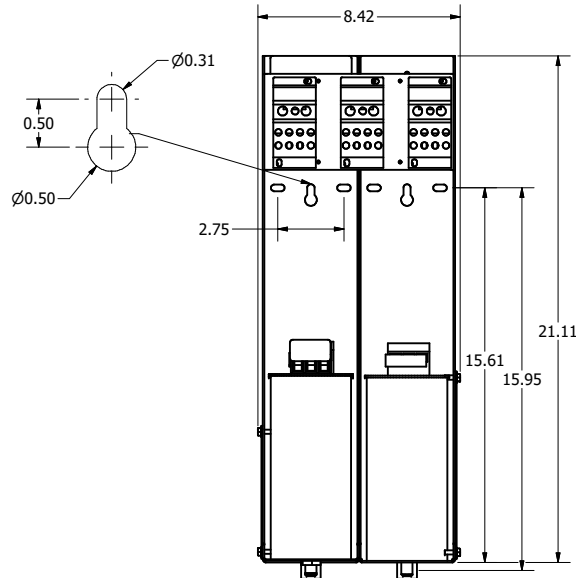
CONFIGURATION A



CONFIGURATION B



Cap Connection	
Wire Range	Tightening Torque
(2x)14-2 Awg.	31 Lb-In
(5x)14-8 Awg.	18 Lb-In
(4x)14-6 Awg.	18 Lb-In



Note: 27908, Manual KPC Installation Guide
 MUST SHIP WITH EACH ASSEMBLY.

Material(s) Shall be RoHS Compliant

THE INFORMATION AND DESIGNS CONTAINED
 IN THIS DRAWING ARE CONFIDENTIAL AND THE
 PROPRIETARY PROPERTY OF ALLIED MOTION
 TECHNOLOGIES INC. AND ITS SUBSIDIARIES.
 NEITHER THIS DESIGN NOR ANY INFORMATION
 CONTAINED IN THIS DRAWING MAY BE
 REPRODUCED OR DISCLOSED TO OTHERS
 WITHOUT THE EXPRESS WRITTEN CONSENT OF
 ALLIED MOTION TECHNOLOGIES INC. AND ITS
 SUBSIDIARIES.

NO	REVISION	DATE	BY
B	6142: Add both ASC and VISHAY	1/17/2023	DSW
A	As Designed	03/30/18	JRN
NO			

TOLERANCES (EXCEPT AS NOTED)		SCALE: To Fit	
DECIMAL	.XX ± .25 .XXX ± .10	DATE	03/30/18
FRACTIONAL	± 1/16	DRN BY	JRN
ANGULAR	± 1°	DATE	03/30/18
		REV	02

TCL W132N10611 (Grant 13445)
 Germantown, WI 53022
 © 2023 TCI, LLC
 An *Advanced Motion Controls* Company
KPCUL048A64, 480V, 48kVAR
 Sinewave, Panelized Caps
107637DG