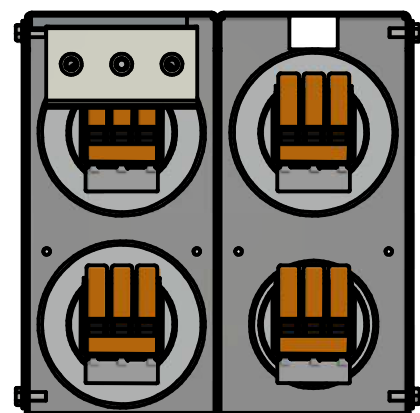


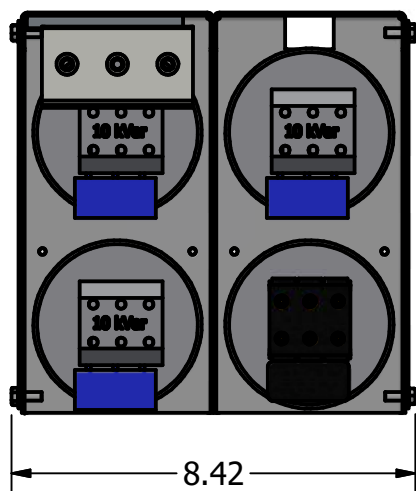
KPCUL038A64, 480V, 154A, 38kVar
 Approx. Weight: 20 Lbs

**DUE TO CAPACITOR AVAILABILITY
 ASSEMBLY MAY BE SUPPLIED
 AS CONFIGURATION A OR B.**

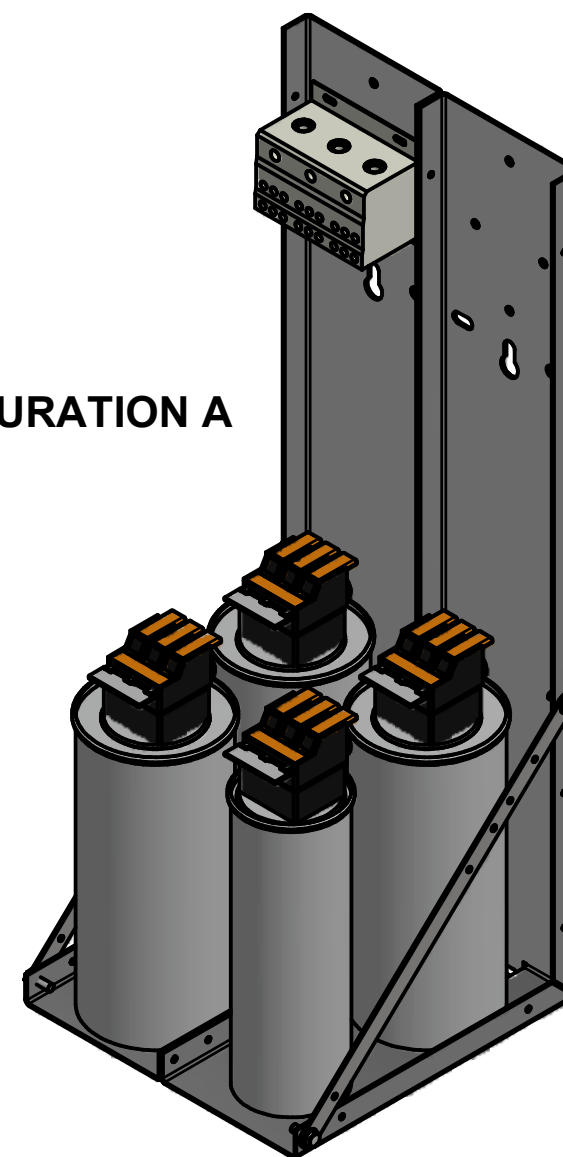
CONFIGURATION A



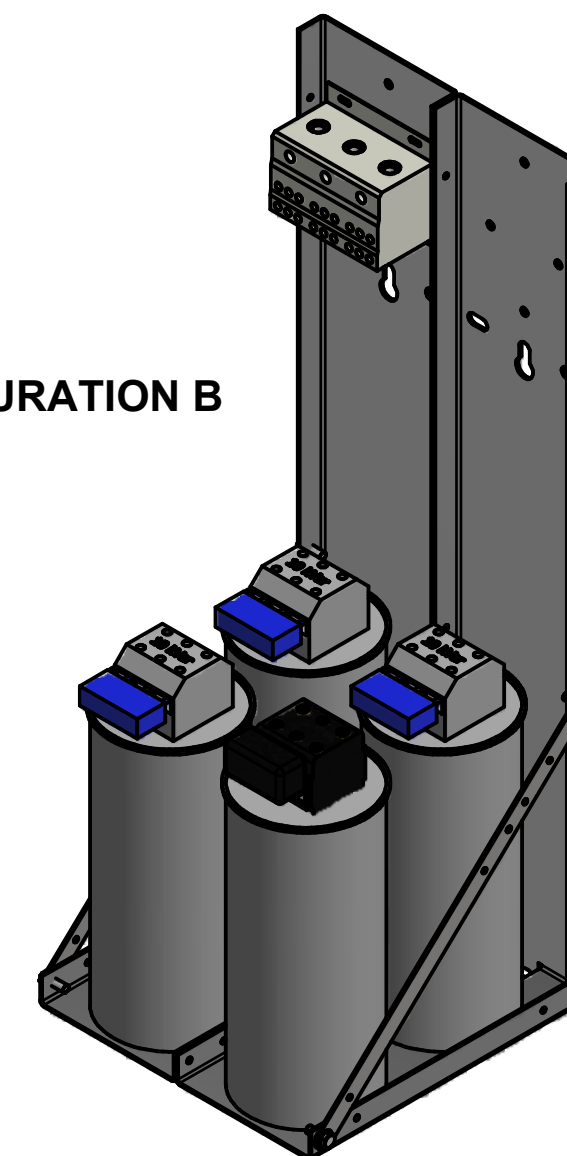
CONFIGURATION B



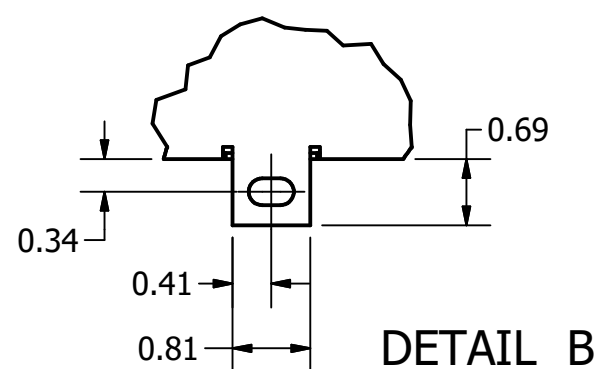
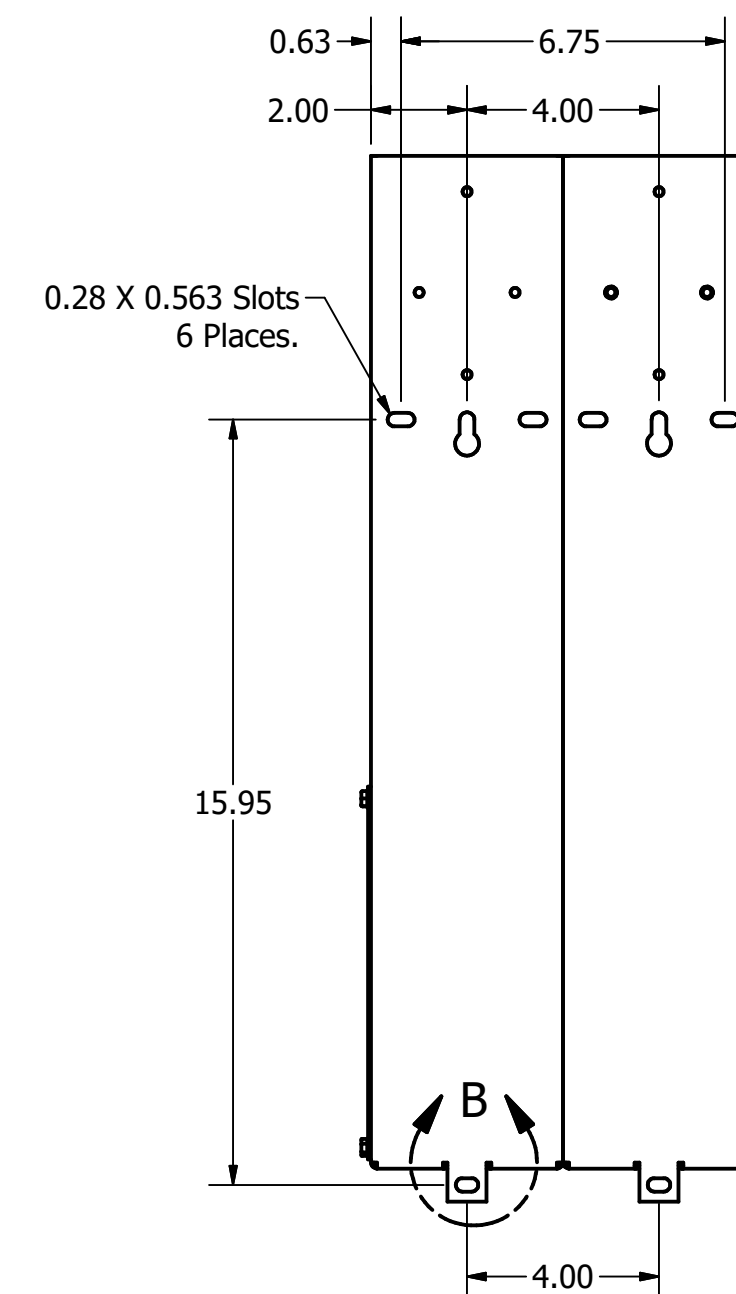
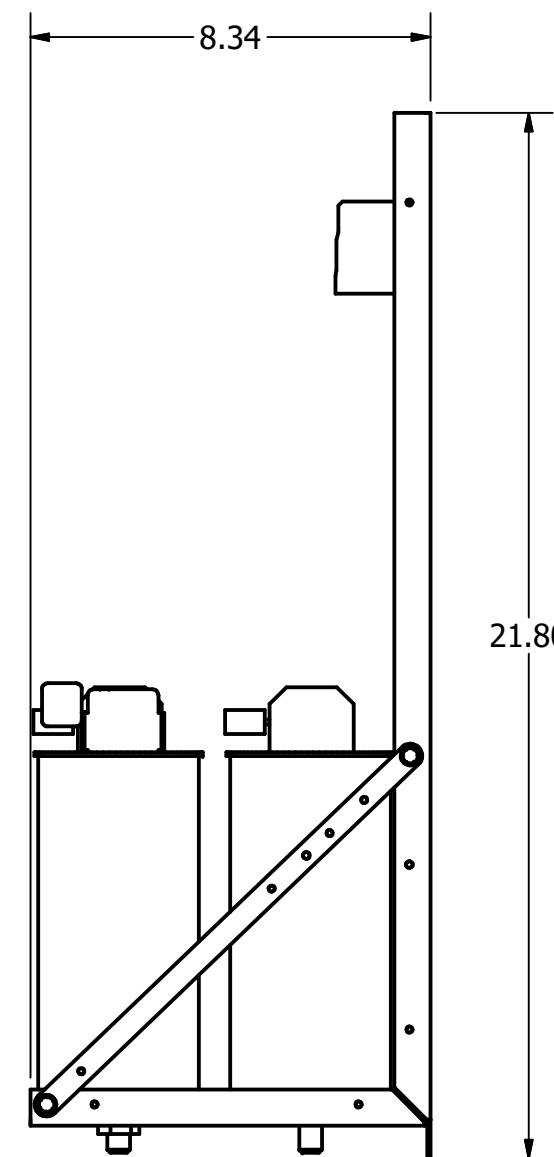
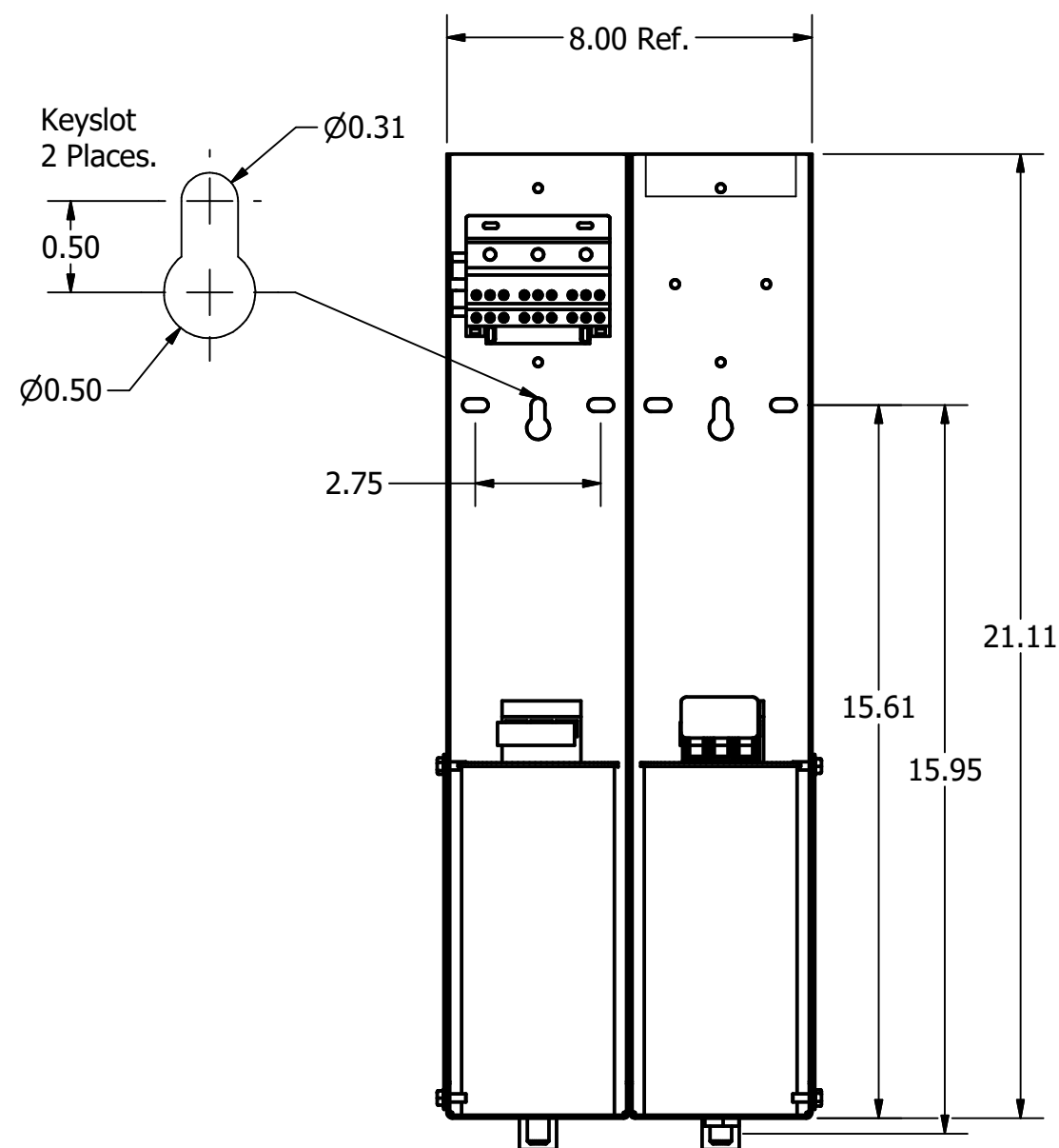
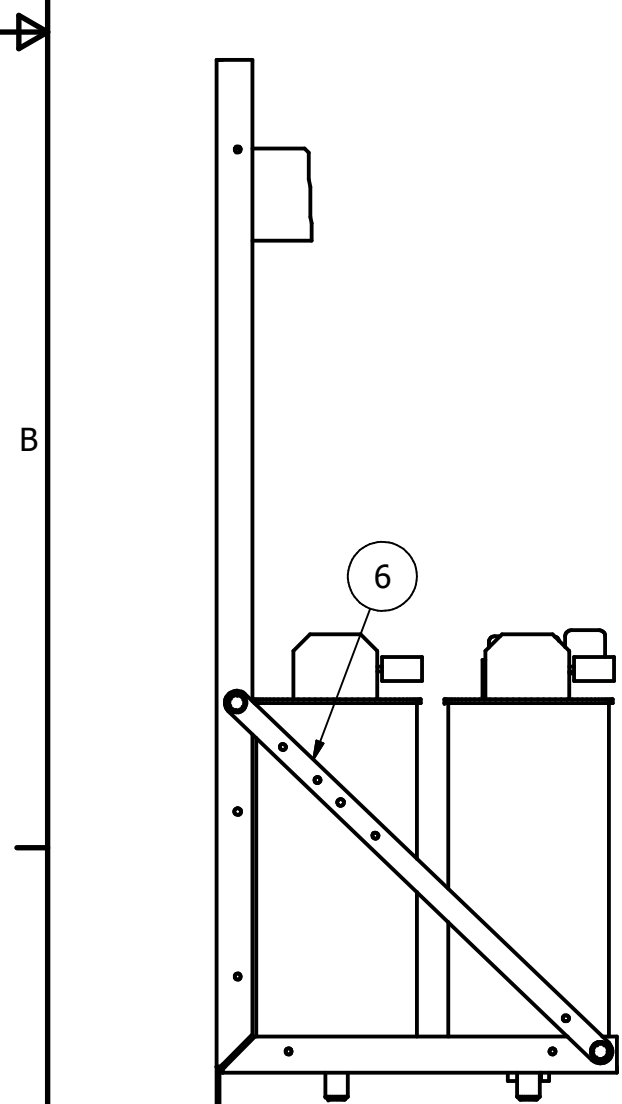
CONFIGURATION A



CONFIGURATION B



Customer Input	
Wire Range	Tightening Torque
8-2/0 AWG	35.5 Lb-In



HOLE TOLERANCE ± .005

Note: 27908, Manual KPC Installation Guide
 MUST SHIP WITH EACH ASSEMBLY.

THE INFORMATION AND DESIGNS CONTAINED
 IN THIS DRAWING ARE CONFIDENTIAL AND THE
 PROPRIETARY PROPERTY OF ALLIED MOTION
 TECHNOLOGIES INC. AND ITS SUBSIDIARIES.
 NEITHER THIS DESIGN NOR ANY INFORMATION
 CONTAINED IN THIS DRAWING MAY BE
 REPRODUCED OR DISCLOSED TO OTHERS
 WITHOUT THE EXPRESS WRITTEN CONSENT OF
 ALLIED MOTION TECHNOLOGIES INC. AND ITS
 SUBSIDIARIES.

				TOLERANCES (EXCEPT AS NOTED)	
				DECIMAL	
				.XX ± .25	
				.XXX ± .10	
				FRACTIONAL	
				± 1/16	
				ANGULAR	
				± 1°	
B	6151 Added Vishay Configuration	01/25/23	JRN		
A	As Designed	03/26/18	JRN		
NO	REVISION	DATE	BY		

TCL W132N10611 Grant Drive
 Germantown, WI 53022
 © 2023 TCL, LLC

KPCUL038A64, 480V, 38kVAR
 Sinewave, Panelized Caps

DRN BY: JRN DATE: 03/26/18
 SCALE: 1/4 APRVD: SIZE: C

107636DG
 SHT. 1 OF 1