

480 Rated Voltage, 600 Max Voltage, High Z, Impedance.

Part Number	Horsepower (HP)	Motor Amps (A)	Maximum Amps (A)	Inductance (uH)	Weight (LBS)	Losses (W)	Available Lug Kit	Terminal Hole Size (Inches)
KDRX2HE01	800	960	965	32.5	615	1661	SLK16	0.53

480 Rated Voltage, 600 Max Voltage, Low Z, Impedance.

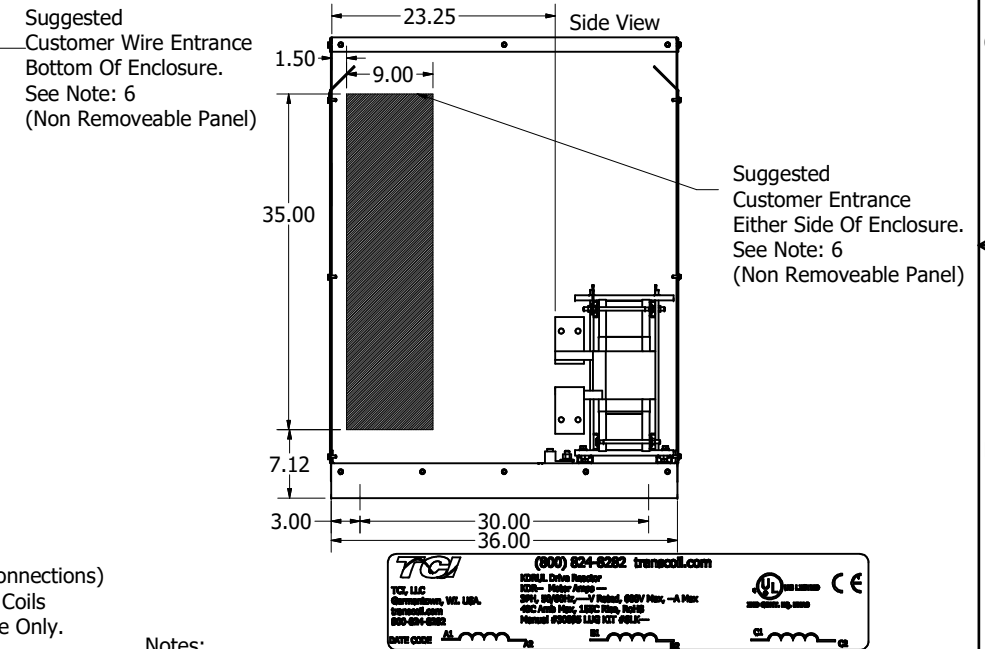
Part Number	Horsepower (HP)	Motor Amps (A)	Maximum Amps (A)	Inductance (uH)	Weight (LBS)	Losses (W)	Available Lug Kit	Terminal Hole Size (Inches)
KDRX2LE01	800	960	965	19.5	590	997	SLK16	0.53

575 Rated Voltage, 600 Max Voltage, Low Z, Impedance.

Part Number	Horsepower (HP)	Motor Amps (A)	Maximum Amps (A)	Inductance (uH)	Weight (LBS)	Losses (W)	Available Lug Kit	Terminal Hole Size (Inches)
KDRX41LE01	900	864	900	26.6	590	1075	SLK16	0.53
KDRX42LE01	1000	960	1000	23.9	590	1194	SLK16	0.53

575 Rated Voltage, 600 Max Voltage, High Z, Impedance.

Part Number	Horsepower (HP)	Motor Amps (A)	Maximum Amps (A)	Inductance (uH)	Weight (LBS)	Losses (W)	Available Lug Kit	Terminal Hole Size (Inches)
KDRX44HE01	800	768	840	49.8	620	1100	SLK16	0.53



- Notes:
1. KDR Lug Kits sold separately. Contact TCI.
  2. UL file number: cULus Listed File E116124.
  3. KDR Drive Reactors Comply With The Thermal and Altitude Standards Set Forth by NEMA ST20-1992.
  4. KDR IOM Manual Part Number 30895
  5. Material(s) Shall be RoHS Compliant
  6. Customer Is Responsible For Installation To Meet All National And Local Electrical Codes.

TOLERANCES (EXCEPT AS NOTED)		THE INFORMATION AND DESIGNS CONTAINED IN THIS DRAWING ARE CONFIDENTIAL AND THE PROPRIETARY PROPERTY OF ALLIENT INC. AND ITS SUBSIDIARIES. NEITHER THIS DESIGN NOR ANY INFORMATION CONTAINED IN THIS DRAWING MAY BE REPRODUCED OR DISCLOSED TO OTHERS WITHOUT THE EXPRESS WRITTEN CONSENT OF ALLIENT INC. AND ITS SUBSIDIARIES.		DESIGNED BY	DATE	SCALE	SIZE	SHEET
DECIMAL	.XX ± .25 .XXX ± .10			DSW	4/16/18	1/10	C	1 OF 1
FRACTIONAL	± 1/32			DSW				
ANGULAR	± 1°			DSW				
REVISION		DATE		BY				
						107616-1		

**Allient Power**

W132N10611 Grant Drive  
Germantown, WI 53022  
© 2024 Allient Inc.

**KDR X Frame Enclosed Type 1**