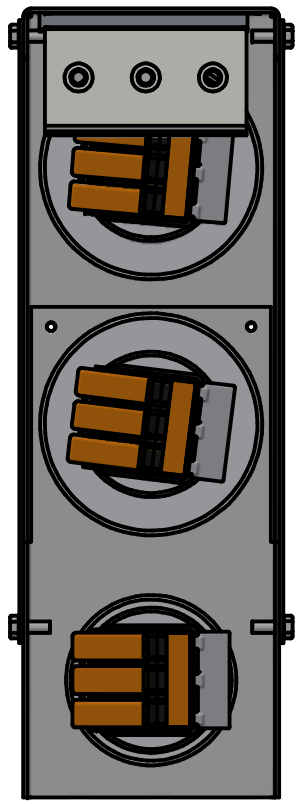


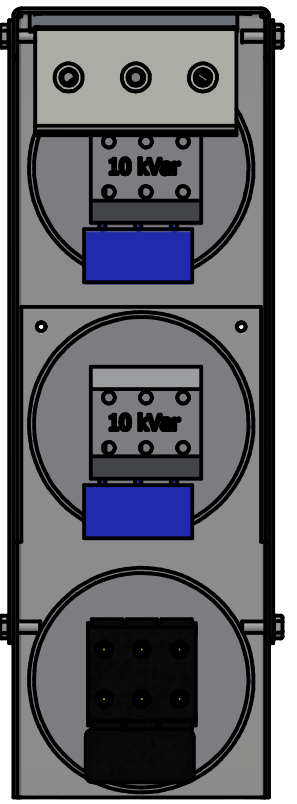
KPCUL028A64, 480V, 107A, 28kVar
 Approx Weight: 15LBS
 See 27908 (KPC Capacitor Bank Manual)
 For Installation Information.

Customer Input:
 Wire Range: #8 AWG TO #2/0 AWG
 Torque: 35.5 LB-IN

Customer Input:
 Wire Range: #14 AWG TO #4 AWG
 Torque: 17.5 LB-IN

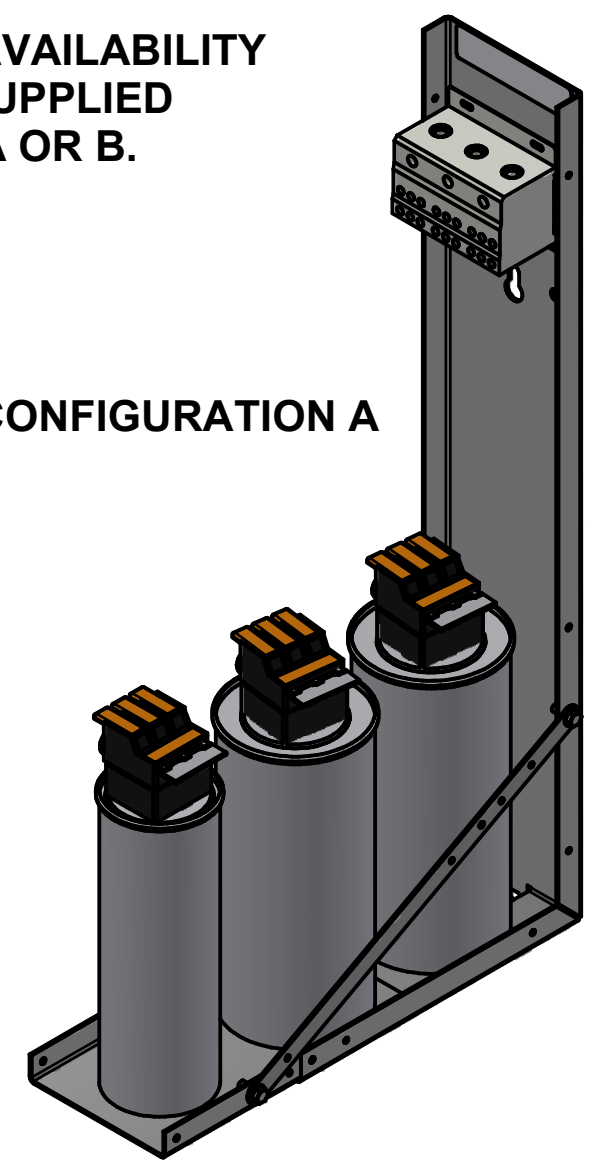


CONFIGURATION A

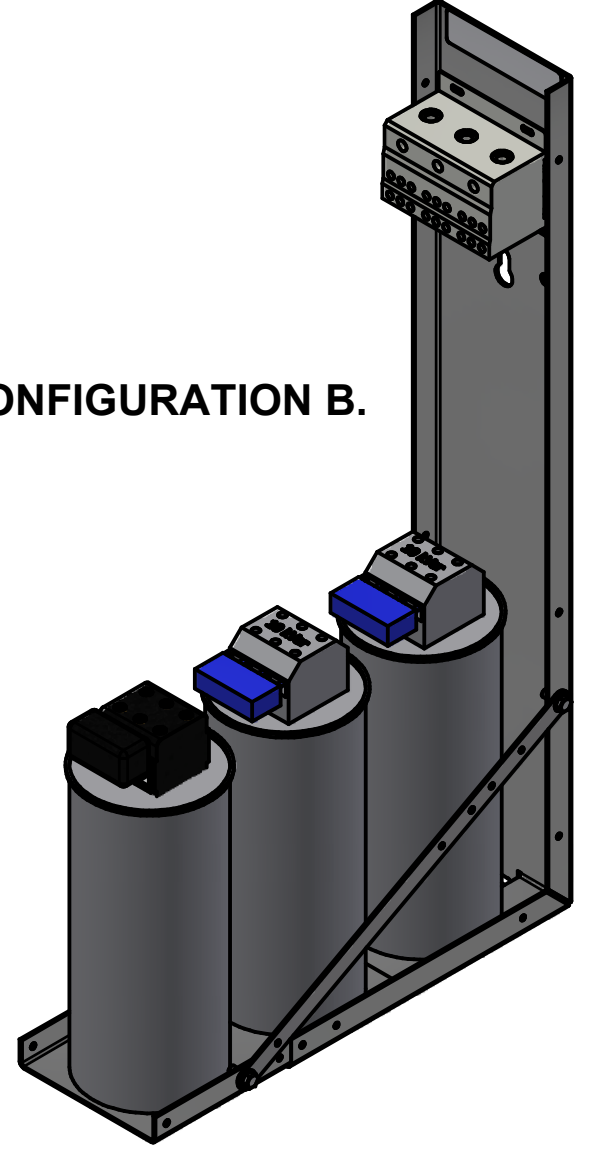


CONFIGURATION B.

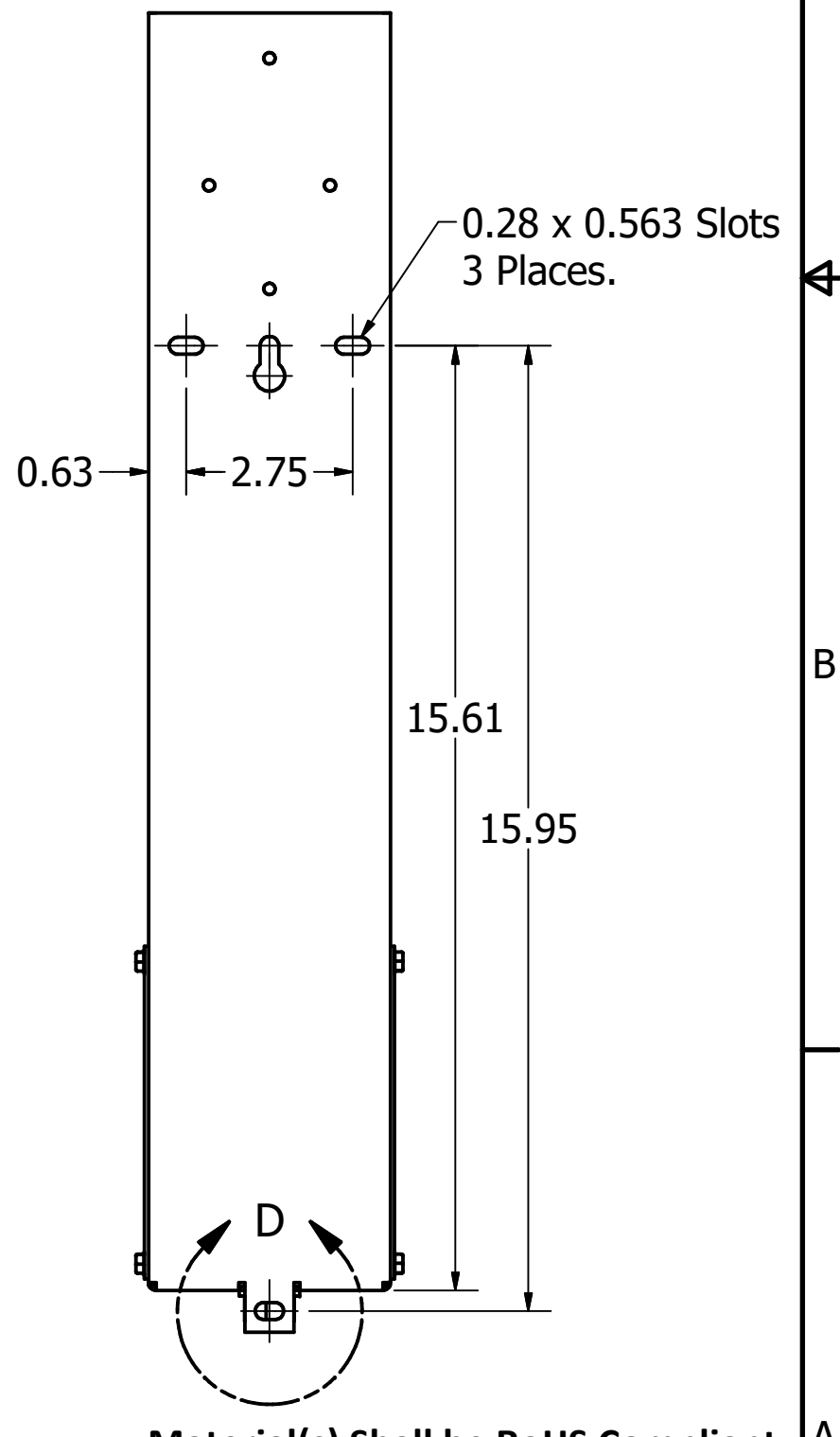
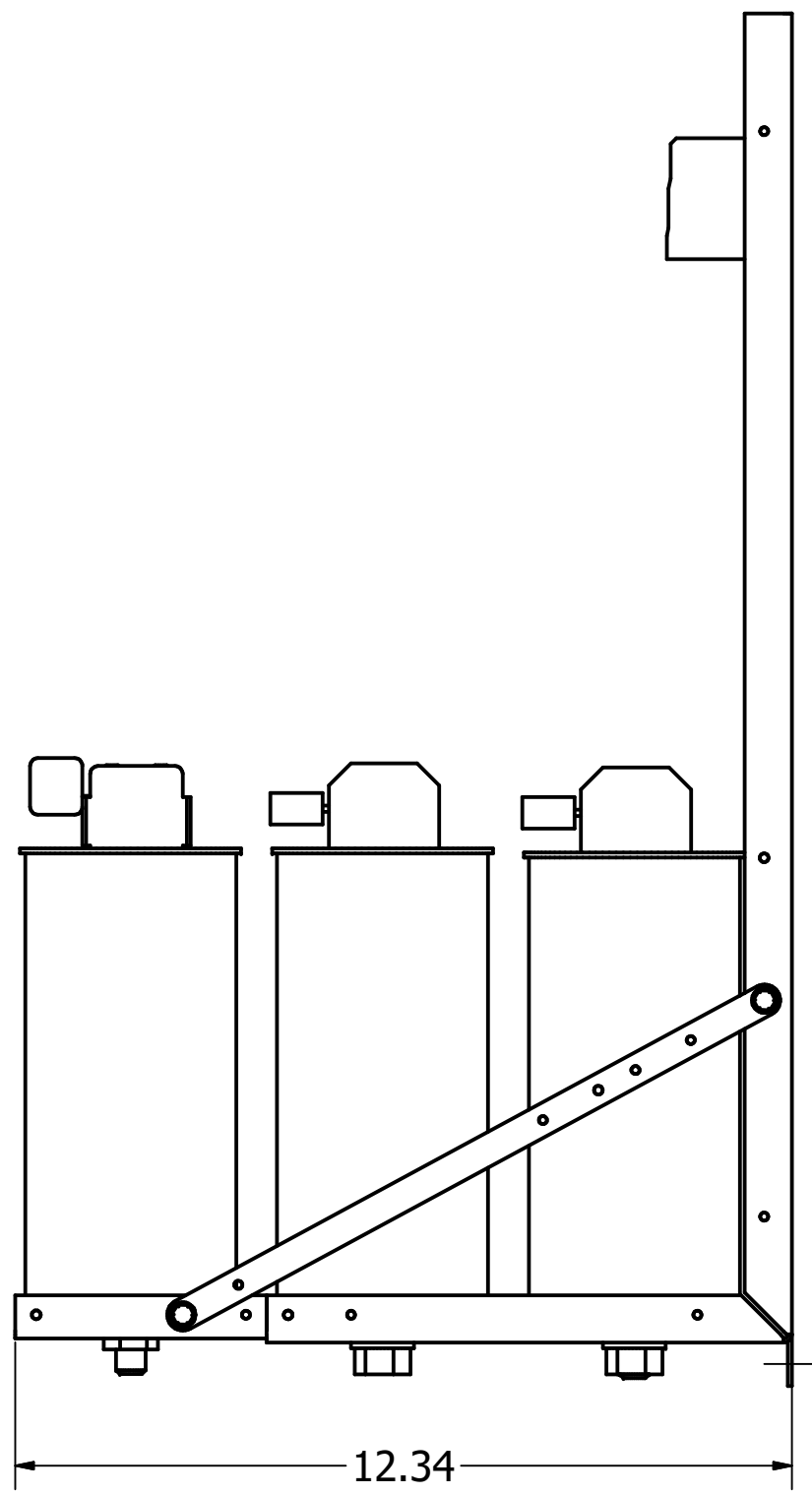
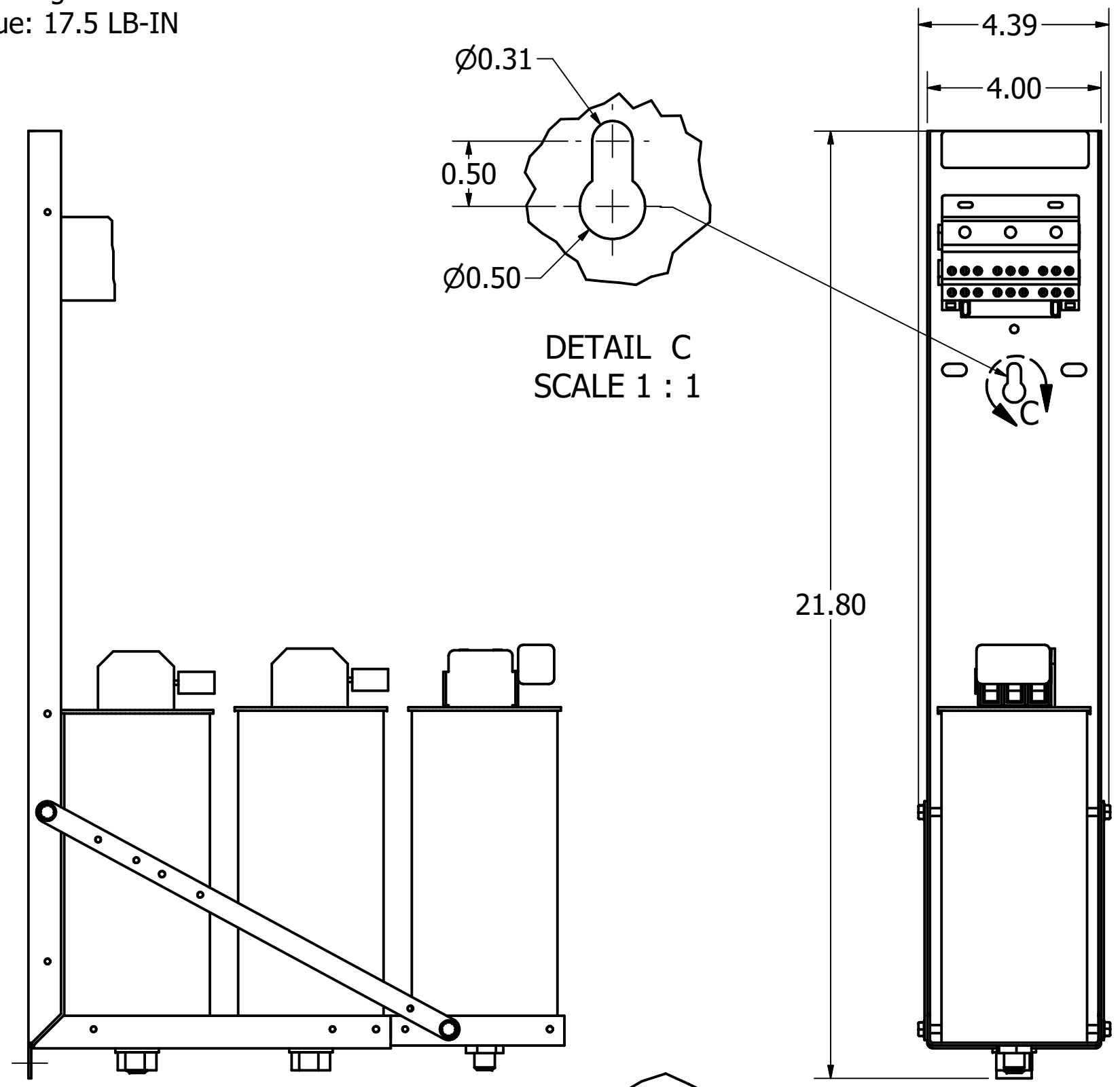
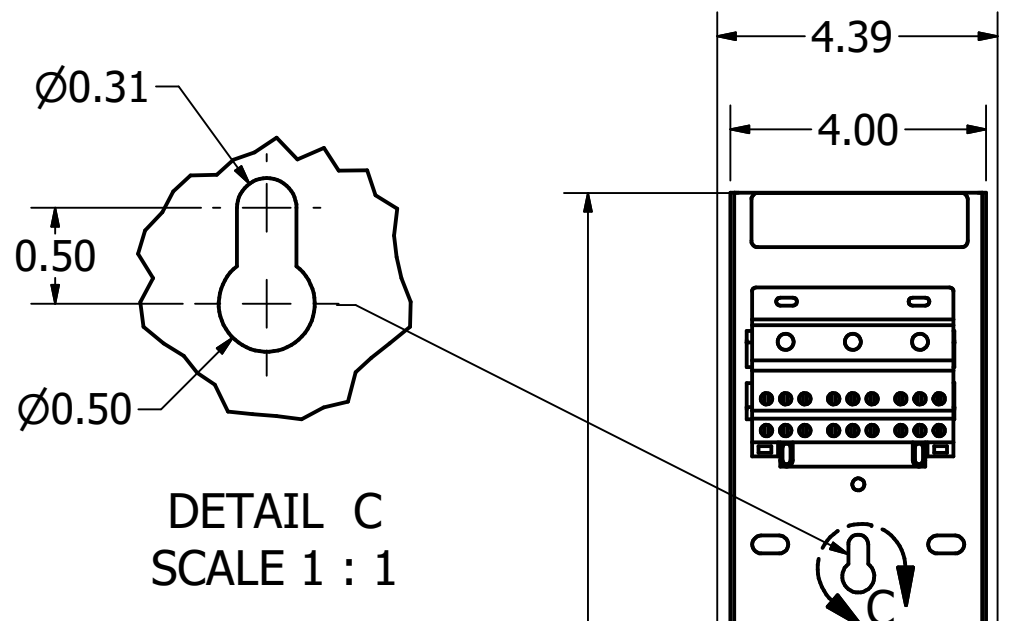
DUE TO CAPACITOR AVAILABILITY
 ASSEMBLY MAY BE SUPPLIED
 AS CONFIGURATION A OR B.




CONFIGURATION A



CONFIGURATION B.



Material(s) Shall be RoHS Compliant

THE INFORMATION AND DESIGNS CONTAINED IN THIS DRAWING ARE CONFIDENTIAL AND THE PROPRIETARY PROPERTY OF ALLIED MOTION TECHNOLOGIES INC. AND ITS SUBSIDIARIES. NEITHER THIS DESIGN NOR ANY INFORMATION CONTAINED IN THIS DRAWING MAY BE REPRODUCED OR DISCLOSED TO OTHERS WITHOUT THE EXPRESS WRITTEN CONSENT OF ALLIED MOTION TECHNOLOGIES INC. AND ITS SUBSIDIARIES.				TOLERANCES (EXCEPT AS NOTED) DECIMAL .XX ± .25 .XXX ± .10		 W132N10611 Grant Drive Germantown, WI 53022 © 2023 TCI, LLC	
B 6151 Updated With Configurations		01/25/23	JRN	FRACTIONAL ± 1/16		KPCUL028A64, 480V, 28kVAR	
A As Designed		03/14/18	DSW	ANGULAR ± 1°		Sinewave, Panelized Caps	
NO REVISION		DATE	BY	SCALE: 1/2		DRN BY: DSW DATE: 03/14/18 APRVD: [Signature] SIZE: C SHT. 1 OF 1	