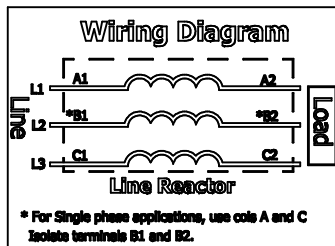


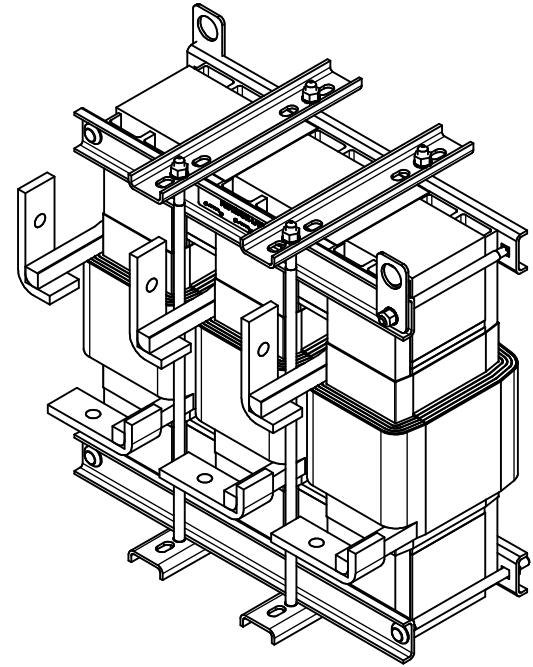
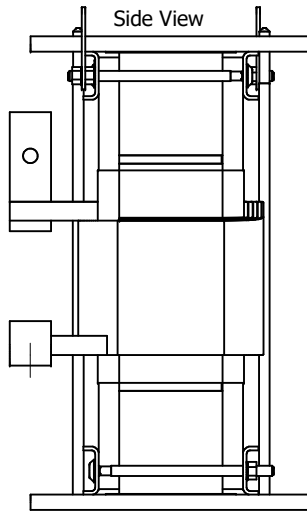
(Customer Connections) Markings On Coils For Reference Only.

0.44 Wide x 0.75 Long Slots 4 Places.



* For Single phase applications, use coils A and C Isolate terminals B1 and B2.

575 Rated Voltage, 600 Max Voltage, High Z, Impedance.								
Part Number	Horsepower (HP)	Motor Amps (A)	Maximum Amps (A)	Inductance (uH)	Weight (LBS)	Losses (W)	Available Lug Kit	Terminal Hole Size (Inches)
KDRX45H	700	672	750	57	280	1393	SLK15	0.53



TCI (800) 824-8282 transcoll.com

TCI, LLC
Germanstown, WI, USA
transcoll.com
800-824-8282

KDRXL Drive Reactor
KDR - Motor Amps -
3PH, 50/60Hz, -V Rated, 600V Max, -A Max
40C Amb Max, 155C Max, RoHS
Manual #30895 LUG KIT #SLK-

UL LISTED
3rd ed. cert. no. 50022

DATE CODE: A1 B1 C1

Notes:

1. KDR Lug Kits sold separately. Contact TCI.
2. UL file number: cULus Listed File E116124.
3. KDR Drive Reactors Comply With The Thermal and Altitude Standards Set Forth by NEMA ST20-1992.
4. KDR IOM Manual Part Number 30895
5. Material(s) Shall be RoHS Compliant
6. Customer Is Responsible For Installation To Meet All National And Local Electrical Codes.

THE INFORMATION AND DESIGNS CONTAINED IN THIS DRAWING ARE CONFIDENTIAL AND THE PROPRIETARY PROPERTY OF ALLIED MOTION TECHNOLOGIES INC. AND ITS SUBSIDIARIES. NEITHER THIS DESIGN NOR ANY INFORMATION CONTAINED IN THIS DRAWING MAY BE REPRODUCED OR DISCLOSED TO OTHERS WITHOUT THE EXPRESS WRITTEN CONSENT OF ALLIED MOTION TECHNOLOGIES INC. AND ITS SUBSIDIARIES.				TOLERANCES (EXCEPT AS NOTED) DECIMAL .XX ± .25 .XXX ± .10 FRACTIONAL ± 1/16 ANGULAR ± 1°				W132N10611 (Rev 11/16) Germanstown, WI 53022 © 2024 TCI, LLC An Official Motors Company KDR X Frame, Copper Bus Reactor Drawing DWG BY: DSW DATE: 3/5/2018 107539-5DG SCALE: 1:3.5 DRAWN BY: DSW SHT 1 OF 1	
C	6688, 760A to 750A Max.	6/20/2024	DSW						
B	5796, Title blk updated chg lift ring sides	12/8/2021	DSW						
A	Combined Drawings	3/5/2018	DSW						
NO	REVISION	DATE	BY						