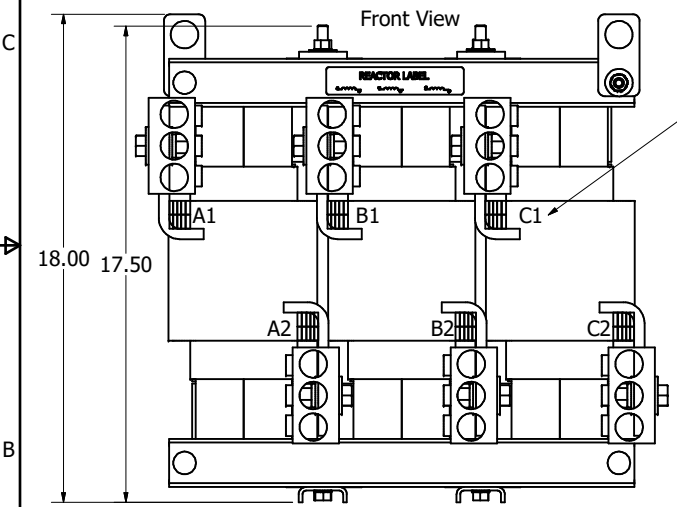
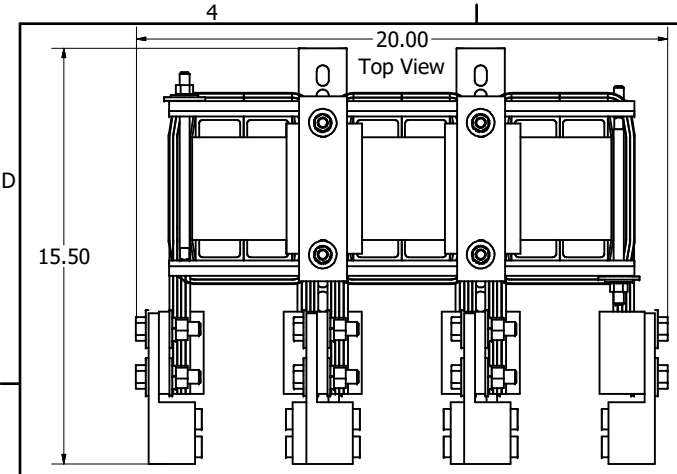
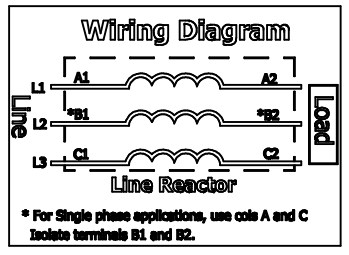
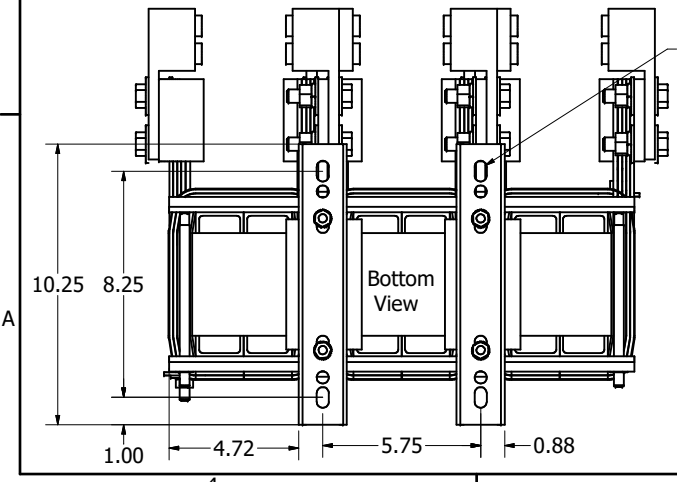
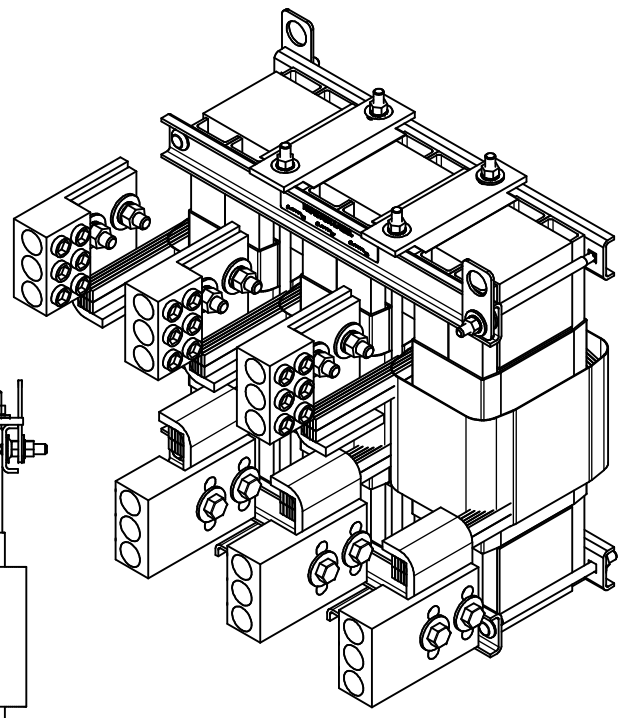
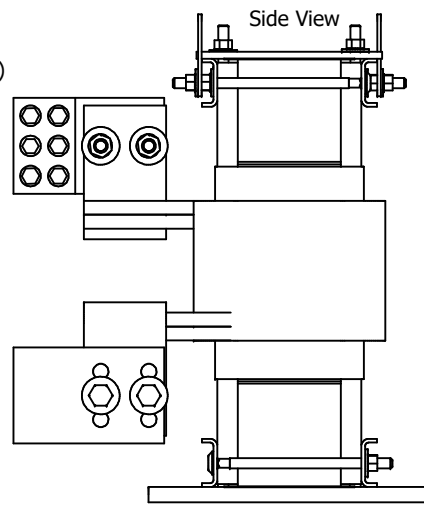


575 Rated Voltage, 600 Max Voltage, Low Z, Impedance.

| Part Number | Horsepower (HP) | Motor Amps (A) | Maximum Amps (A) | Inductance (uH) | Losses (W) | Weight (LBS) | Attached Lug Kit |
|-------------|-----------------|----------------|------------------|-----------------|------------|--------------|------------------|
| KDRULX42L | 1000 | 960 | 1000 | 23.9 | 1194 | 290 | SLK16 |



(Customer Connections) Markings On Coils For Reference Only.



Notes:

1. UL file number: cULus Listed File E116124.
2. KDR Drive Reactors Comply With The Thermal and Altitude Standards Set Forth by NEMA ST20-1992.
3. KDR IOM Manual Part Number 30895
4. Material(s) Shall be RoHS Compliant
5. Customer Is Responsible For Installation To Meet All National And Local Electrical Codes.

THE INFORMATION AND DESIGNS CONTAINED IN THIS DRAWING ARE CONFIDENTIAL AND THE PROPRIETARY PROPERTY OF ALLIED MOTION TECHNOLOGIES INC. AND ITS SUBSIDIARIES. NEITHER THIS DESIGN NOR ANY INFORMATION CONTAINED IN THIS DRAWING MAY BE REPRODUCED OR DISCLOSED TO OTHERS WITHOUT THE EXPRESS WRITTEN CONSENT OF ALLIED MOTION TECHNOLOGIES INC. AND ITS SUBSIDIARIES.

| NO | REVISION | DATE | BY |
|----|----------------------------|-----------|-----|
| A | 6688 107539-2 to 107539-12 | 6/24/2024 | DSW |

| TOLERANCES (EXCEPT AS NOTED) | | TCI | | W132N10611 (Rev. 11/16) Greenwich, VT, WI 50022 | |
|------------------------------|-------------------------|---|------|--|------------|
| DECIMAL | .XX ± .25 .XXX ± .10 | An Official Motors Company KDRUL X Frame Copper Bus Reactor Drawing | | © 2024 TCI, LLC | |
| FRACTIONAL | ± 1/16 | | | DWN BY: DSW DATE: 6/25/2024 107539-12DG | |
| ANGULAR | ± 1° | SCALE: 1:4.5 | DRWG | REV | SHT 1 OF 1 |