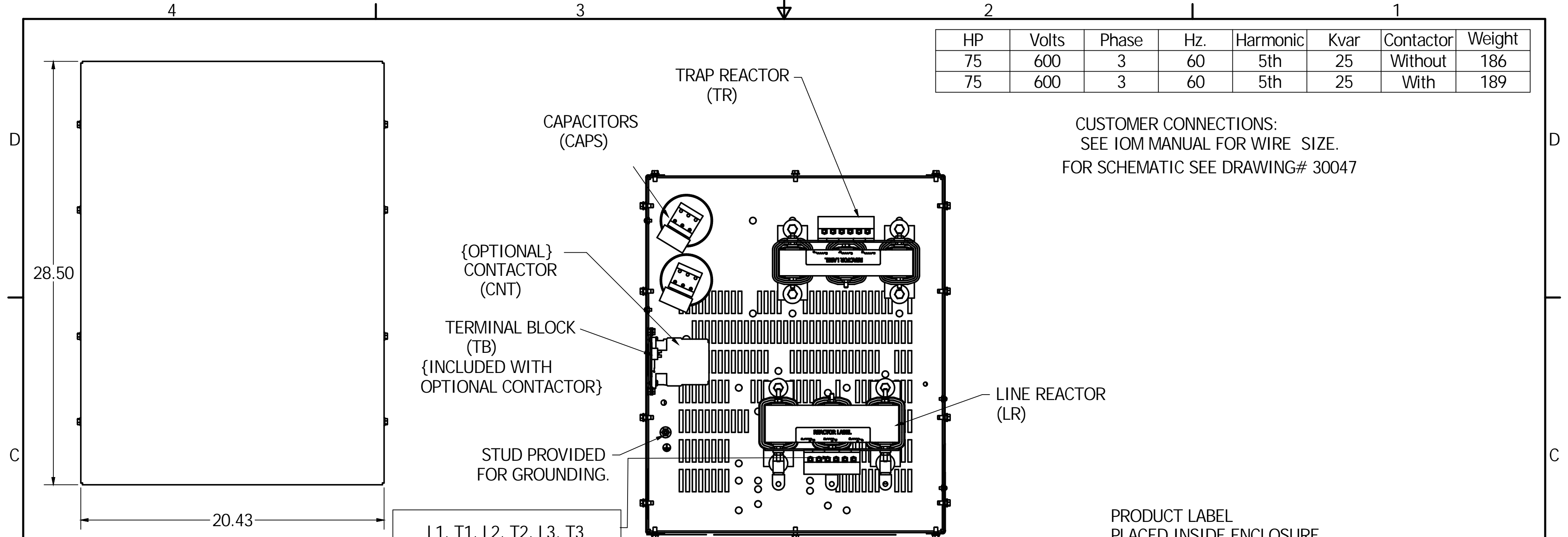
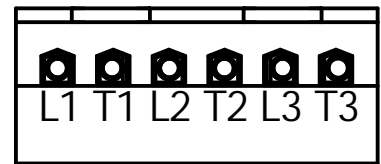


HP	Volts	Phase	Hz.	Harmonic	Kvar	Contactor	Weight
75	600	3	60	5th	25	Without	186
75	600	3	60	5th	25	With	189

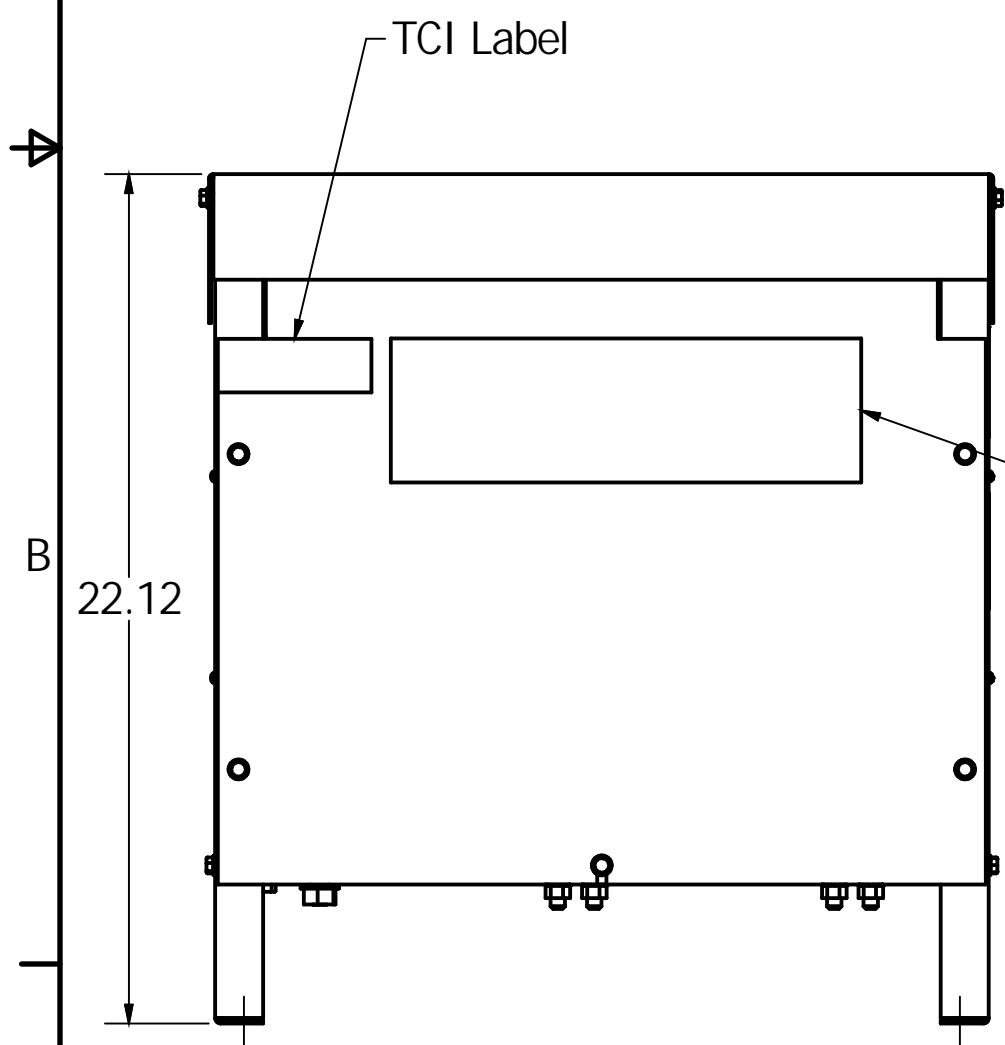
CUSTOMER CONNECTIONS:
SEE IOM MANUAL FOR WIRE SIZE.
FOR SCHEMATIC SEE DRAWING# 30047



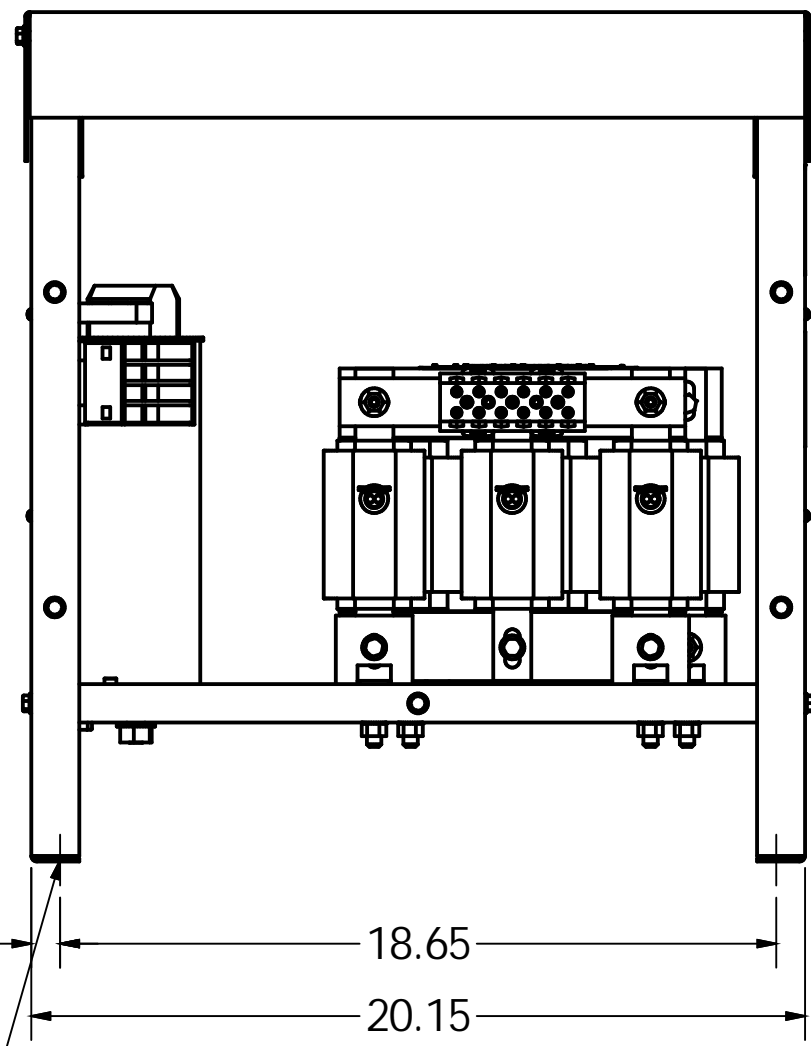
L1, T1, L2, T2, L3, T3
SUGGESTED CUSTOMER WIRE
ENTRY AND EXIT LOCATION.



Tightening Torque:
1AWG thru 4AWG 35 in -lb max
6AWG thru 14AWG 30 in -lb max
16AWG thru 22AWG 25 in -lb max

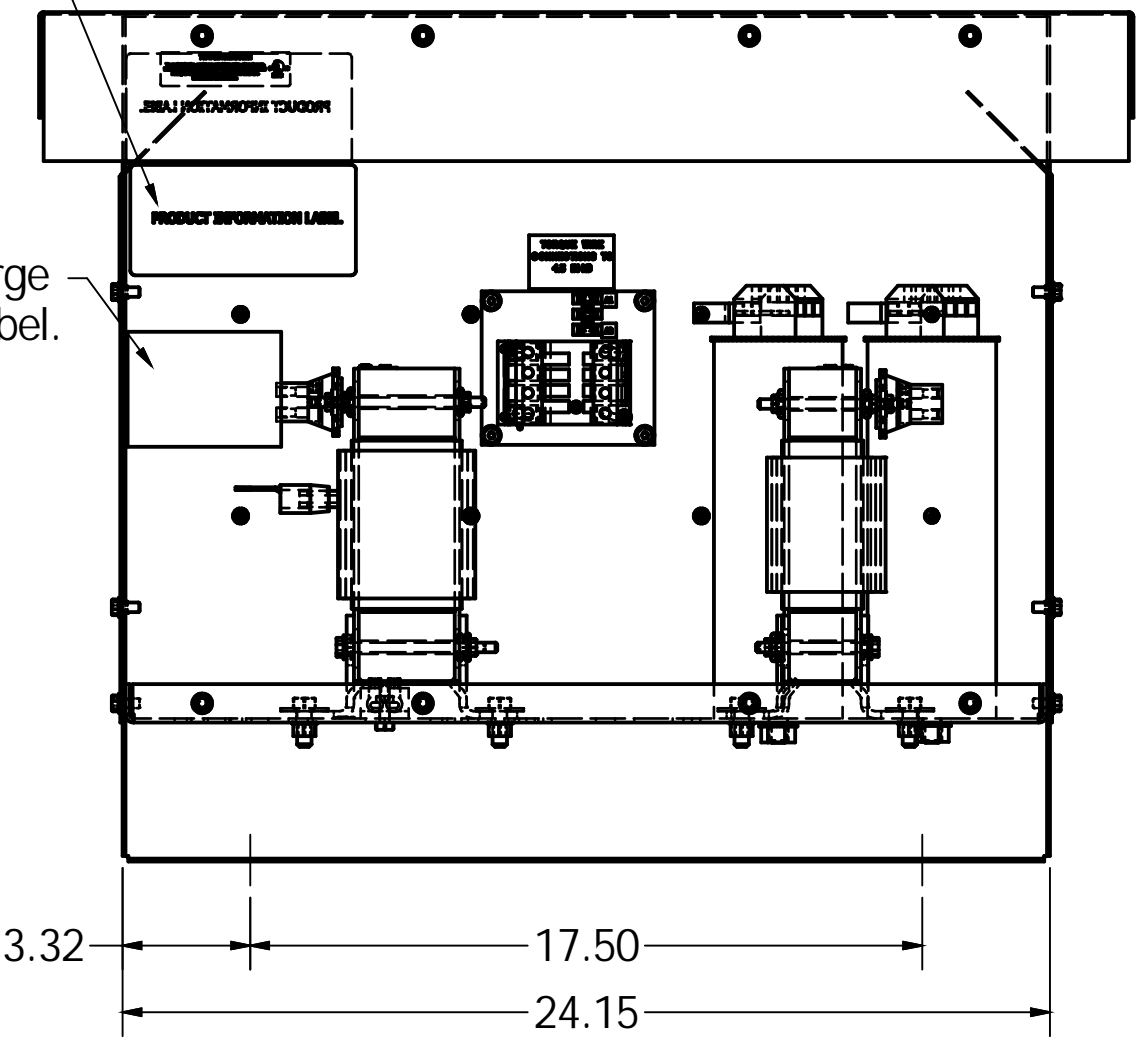


Product Logo



0.50 DIA MOUNTING HOLES.
(4 PLACES)

PRODUCT LABEL
PLACED INSIDE ENCLOSURE
AND OUTSIDE.



CUSTOMER IS RESPONSIBLE FOR INSTALLATION TO MEET
ALL NATIONAL AND LOCAL ELECTRICAL CODES.

NOTE: USE ONLY HUBS OR FITTINGS THAT COMPLY
WITH UL514B FOR TYPE 3R ENCLOSURES.

TCI, LLC CLAIMS PROPRIETARY RIGHTS IN THE MATERIAL HEREIN DISCLOSED. IT IS SUPPLIED WITHOUT PREDJUDICE TO ANY PATENT RIGHTS OF TCI AND MAY NOT BE REPRODUCED OR USED TO MANUFACTURE ANYTHING SHOWN THEREIN WITHOUT WRITTEN PERMISSION FROM TCI.

TOLERANCES (EXCEPT AS NOTED)	
DECIMAL	.XX +/- .25
	.XXX +/- .1
FRACTIONAL	+/- 1/16
ANGULAR	+/- 1°

NO	REVISION	DATE	BY
A	AS DESIGNED	2/2/17	DSW

Material(s) Shall be RoHS Compliant

W132 N10611 Grant Drive
Germantown, WI 53022

HarmonicShield, 600V
75HP

DRN. BY DSW	DATE 2/2/17	DWG. No. 106602DG
SCALE 1/5	APPRVD.	SHEET 1 OF 1