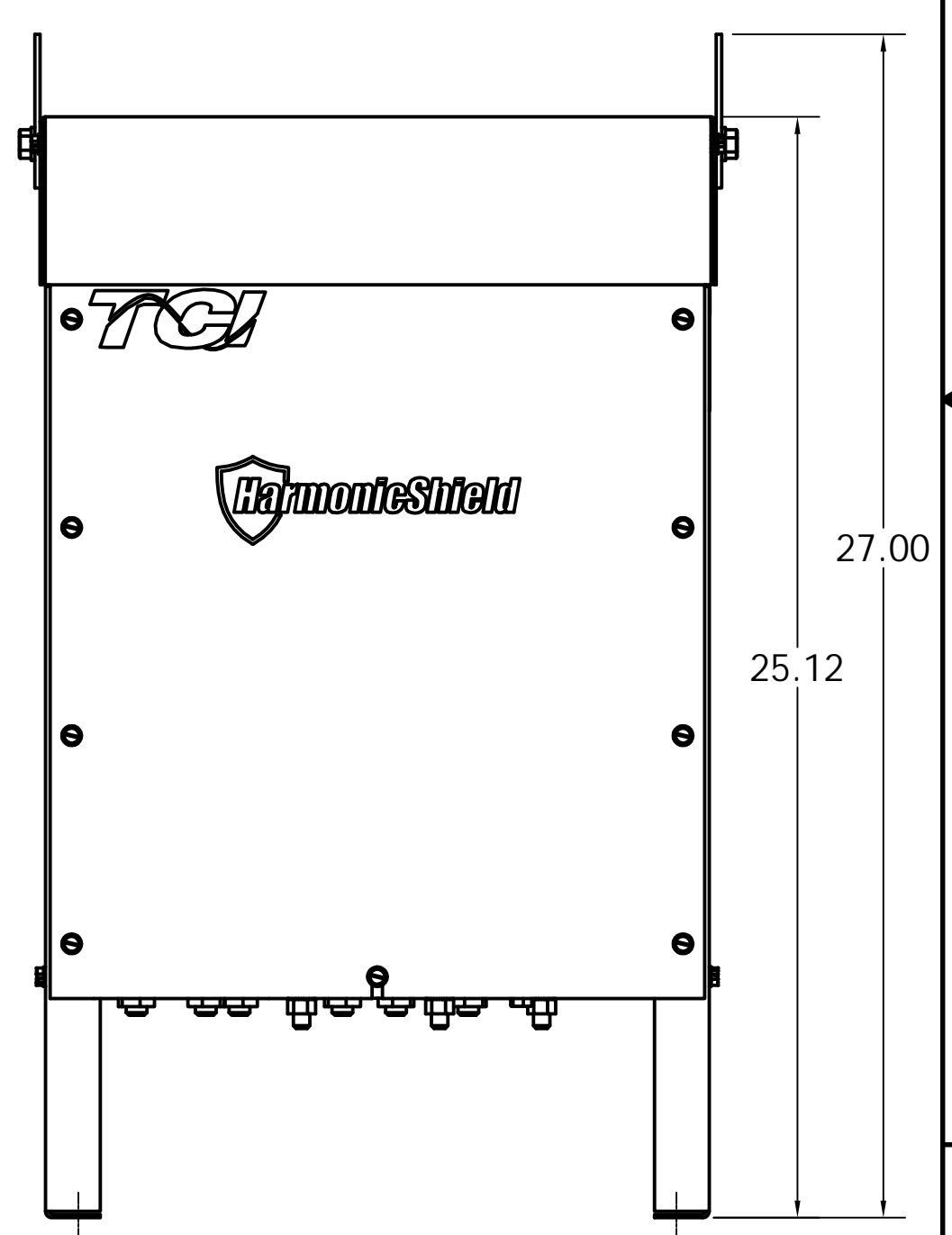
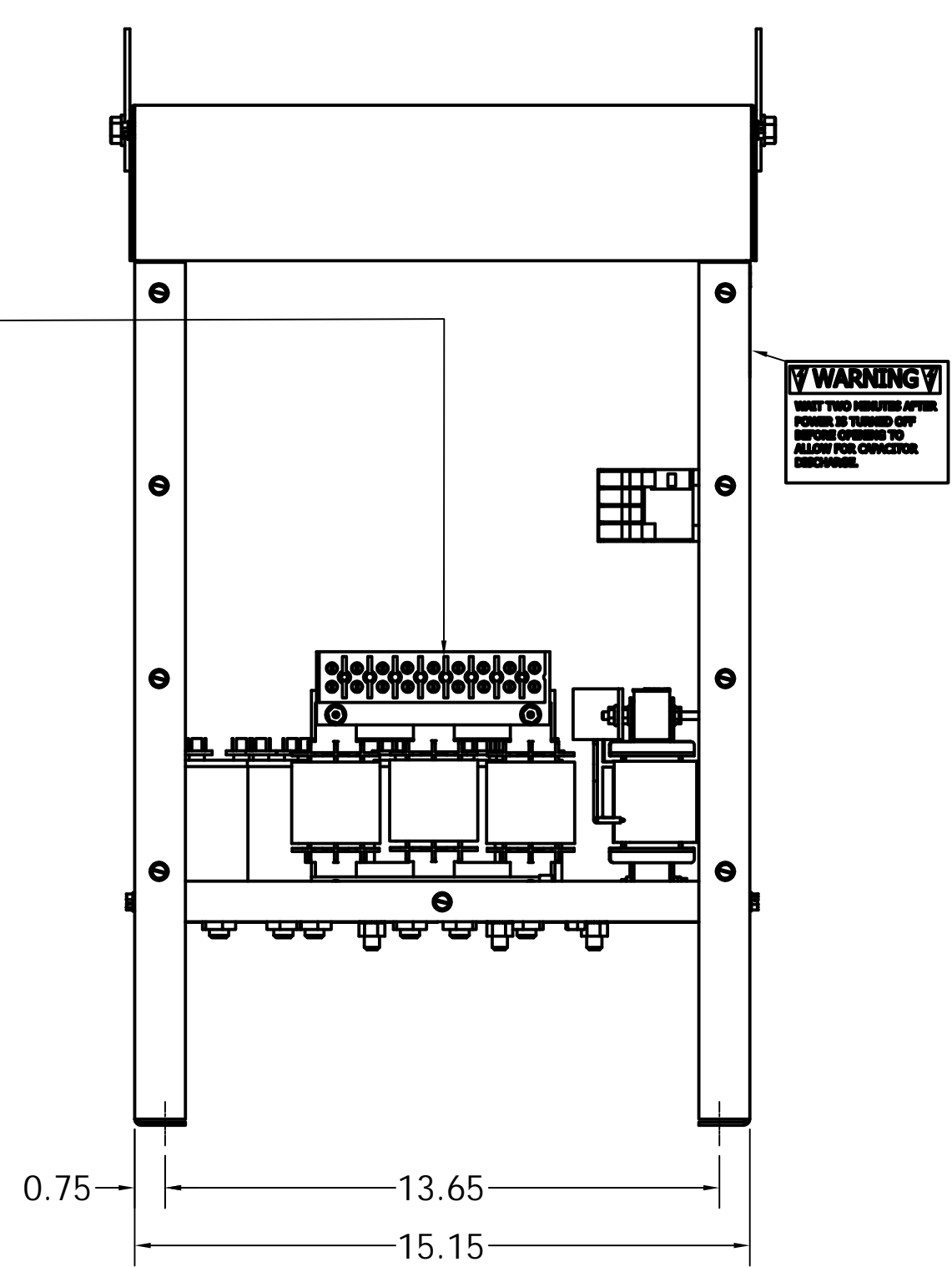
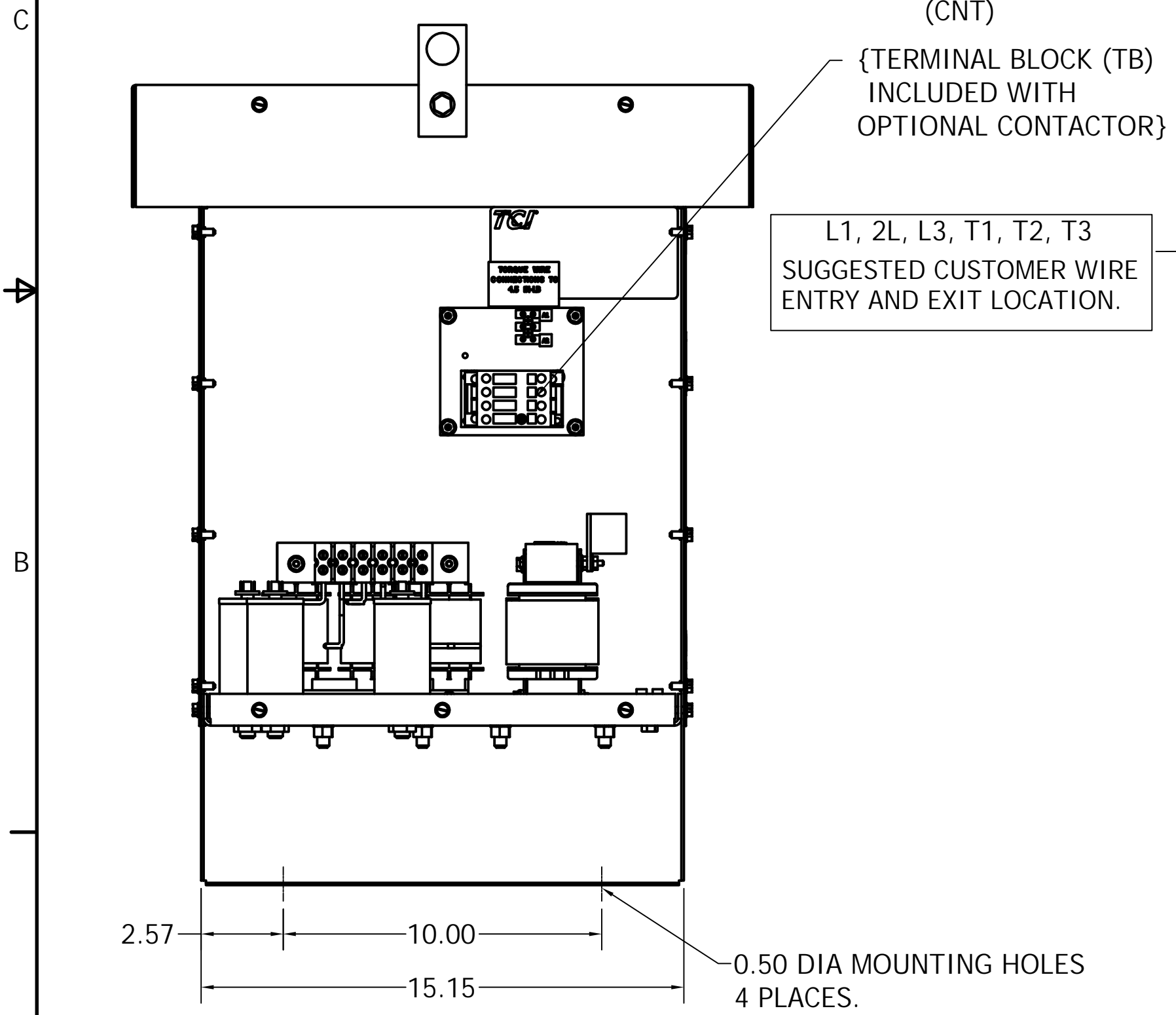
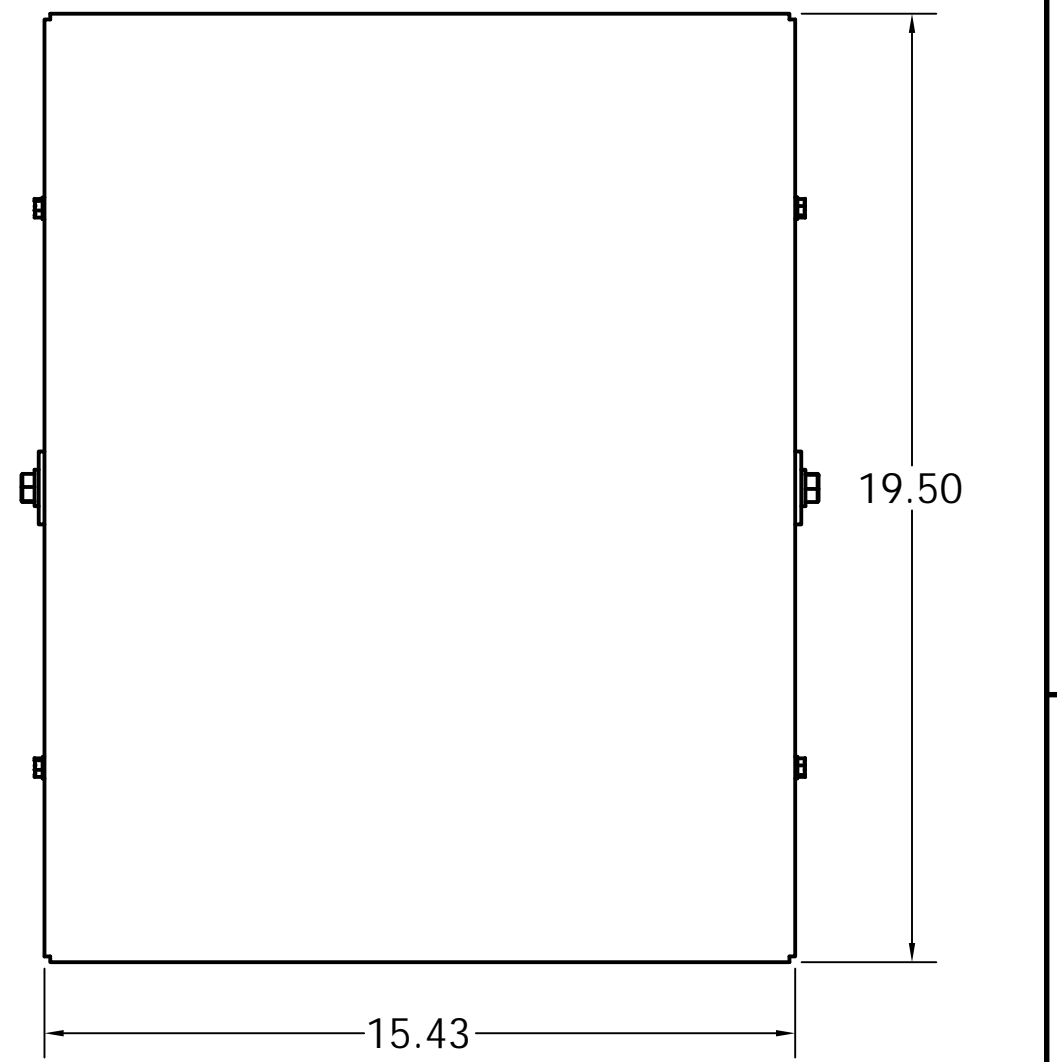
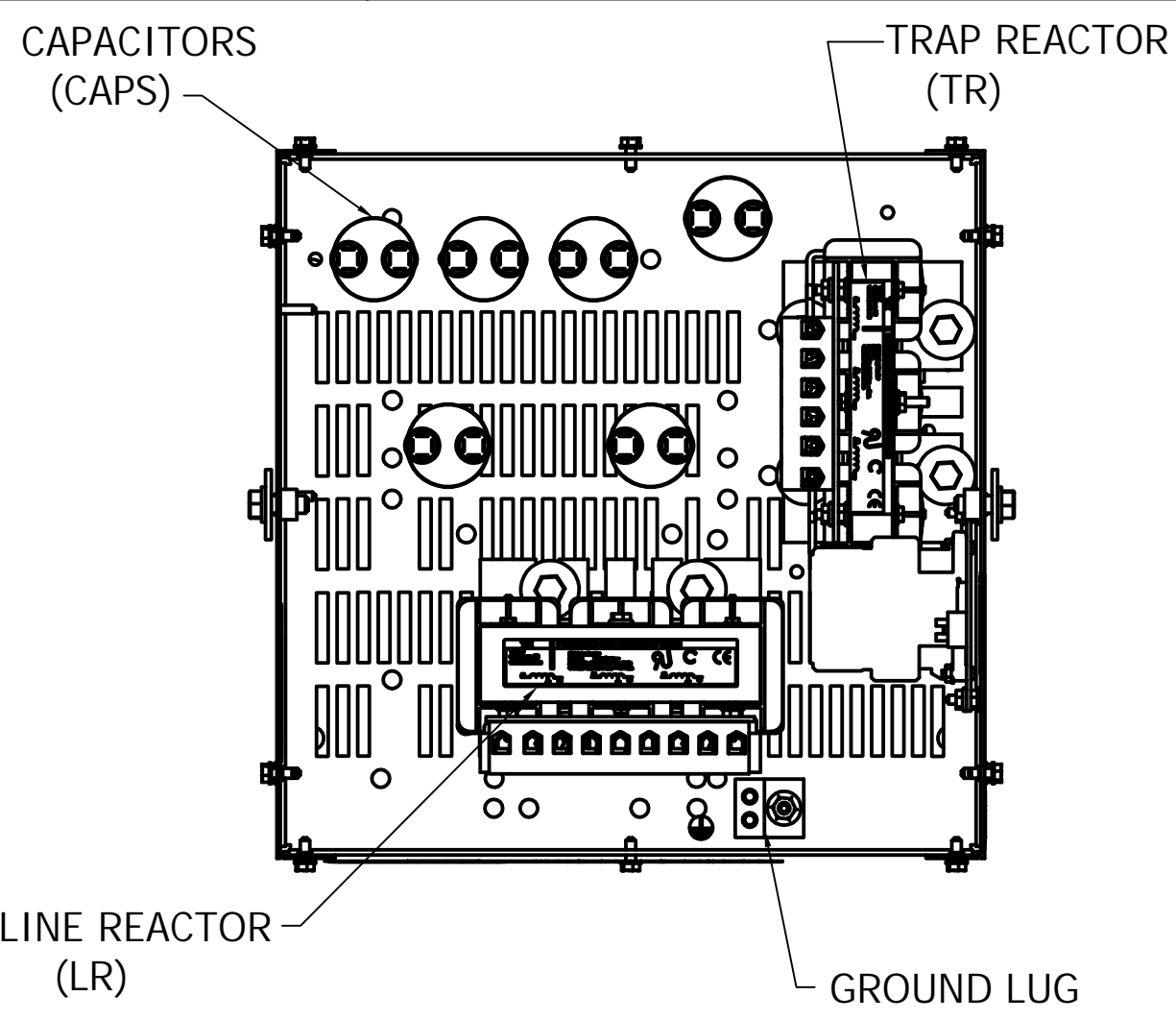


HP	Volts	Phase	H <sub>z</sub>	Harmonic	Kvar	Contactor	Weight
3	600	3	60	5TH	1	Without	60lbs
3	600	3	60	5TH	1	With	63lbs
5	600	3	60	5TH	1.6	Without	60lbs
5	600	3	60	5TH	1.6	With	63lbs
8	600	3	60	5TH	2	Without	77lbs
8	600	3	60	5TH	2	With	80lbs
10	600	3	60	5TH	3.1	Without	77lbs
10	600	3	60	5TH	3.1	With	80lbs

CUSTOMER CONNECTIONS:  
SEE IOM MANUAL FOR WIRE SIZE AND TORQUES.  
FOR SCHEMATIC SEE DRAWING# 30047-1



CUSTOMER IS RESPONSIBLE FOR INSTALLATION TO MEET ALL NATIONAL AND LOCAL ELECTRICAL CODES.

NOTE: USE ONLY HUBS OR FITTINGS THAT COMPLY WITH UL514B FOR TYPE 3R ENCLOSURES.

			TOLERANCES (EXCEPT AS NOTED)		W132 N10611 Grant Drive Germantown, WI 53022	
			DECIMAL		<b>HarmonicShield 600V</b> 3HP, 5HP, 8HP, 10HP	
			.XX +/- .25		<small>DRN. BY</small> DSW <small>DATE</small> 7/22/16 <small>DWG. No.</small> 106598DG	
			.XXX +/- .1		<small>SCALE</small> 1/4" = 1" <small>APRVD.</small>	
			FRACTIONAL		<small>SHEET</small> 1 OF 1	
			+/- 1/16			
			ANGULAR			
			+/- 1°			
A	AS DESIGNED	7/22/16	DSW			
NO	REVISION	DATE	BY			