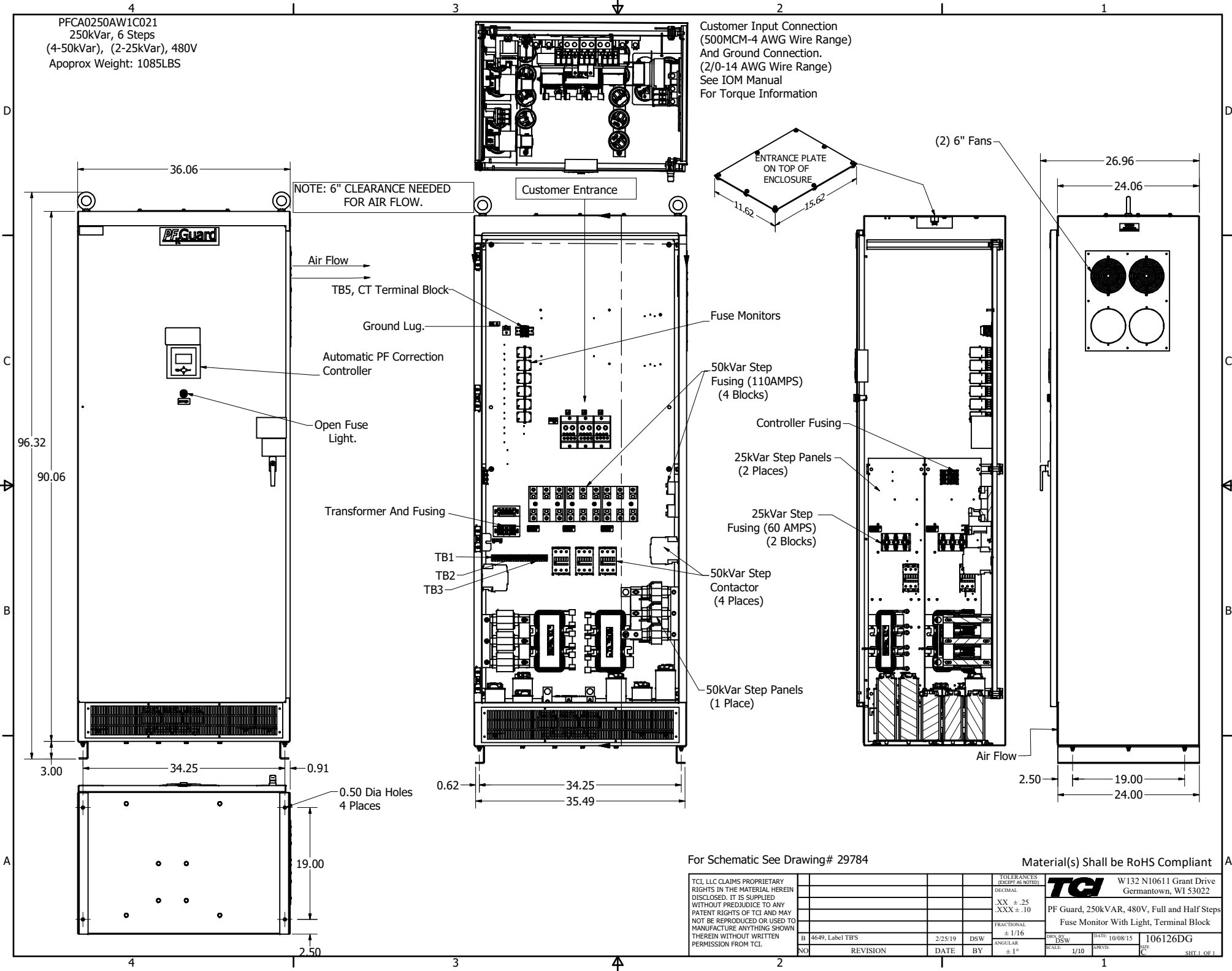


PFCA0250AW1C021
 250kVar, 6 Steps
 (4-50kVar), (2-25kVar), 480V
 Apoprox Weight: 1085LBS

Customer Input Connection
 (500MCM-4 AWG Wire Range)
 And Ground Connection.
 (2/0-14 AWG Wire Range)
 See IOM Manual
 For Torque Information



For Schematic See Drawing# 29784

Material(s) Shall be RoHS Compliant

TCI, LLC CLAIMS PROPRIETARY RIGHTS IN THE MATERIAL HEREIN DISCLOSED. IT IS SUPPLIED WITHOUT PREJUDICE TO ANY PATENT RIGHTS OF TCI AND MAY NOT BE REPRODUCED OR USED TO MANUFACTURE ANYTHING SHOWN THEREIN WITHOUT WRITTEN PERMISSION FROM TCI.				TOLERANCES (EXCEPT AS NOTED)		TCI W132 N10611 Grant Drive Germantown, WI 53022 PF Guard, 250kVAR, 480V, Full and Half Steps Fuse Monitor With Light, Terminal Block
				DECIMAL		
				.XX ± .25	.XXX ± .10	
				FRACTIONAL		DWN BY: DSW DATE: 10/08/15 SCALE: 1/10 DRAWN: [] NO. REVISION DATE BY ± 1"
				ANGULAR		
				± 1/16		
				± 1°		106126DG SHEET 1 OF 1