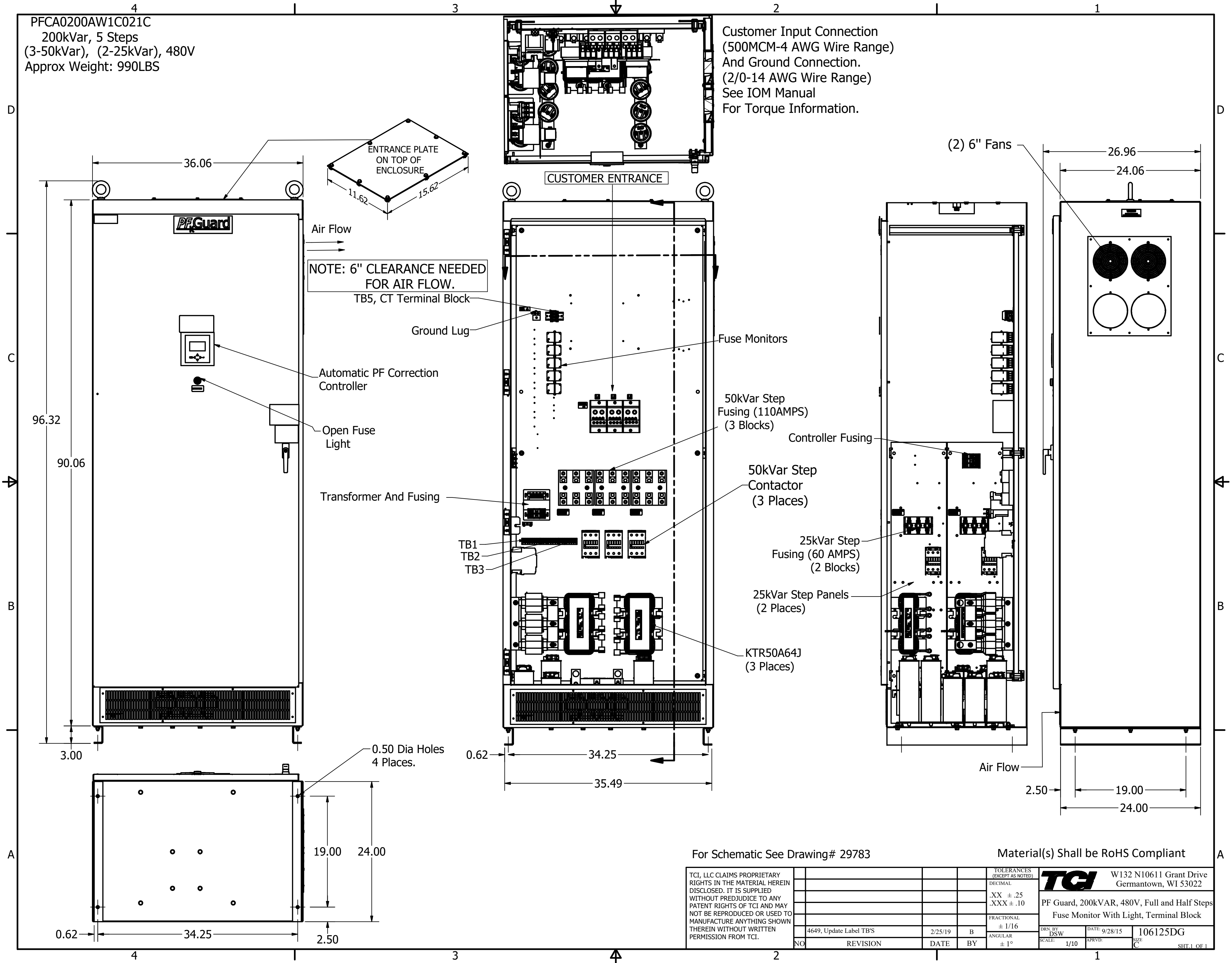


PFA0200AW1C021C
 200kVar, 5 Steps
 (3-50kVar), (2-25kVar), 480V
 Approx Weight: 990LBS

Customer Input Connection
 (500MCM-4 AWG Wire Range)
 And Ground Connection.
 (2/0-14 AWG Wire Range)
 See IOM Manual
 For Torque Information.



NOTE: 6" CLEARANCE NEEDED FOR AIR FLOW.
 TB5, CT Terminal Block

For Schematic See Drawing# 29783

Material(s) Shall be RoHS Compliant

TCI, LLC CLAIMS PROPRIETARY RIGHTS IN THE MATERIAL HEREIN DISCLOSED. IT IS SUPPLIED WITHOUT PREJUDICE TO ANY PATENT RIGHTS OF TCI AND MAY NOT BE REPRODUCED OR USED TO MANUFACTURE ANYTHING SHOWN THEREIN WITHOUT WRITTEN PERMISSION FROM TCI.				TOLERANCES (EXCEPT AS NOTED) DECIMAL .XX ± .25 .XXX ± .10 FRACTIONAL ± 1/16 ANGULAR ± 1°	TCI W132 N10611 Grant Drive Germantown, WI 53022 PF Guard, 200kVAR, 480V, Full and Half Steps Fuse Monitor With Light, Terminal Block DRN BY: DSW DATE: 9/28/15 106125DG SCALE: 1/10 APRVD: SIZE C SHT 1 OF 1
	4649, Update Label TB'S	2/25/19	B		
	NO	REVISION	DATE	BY	