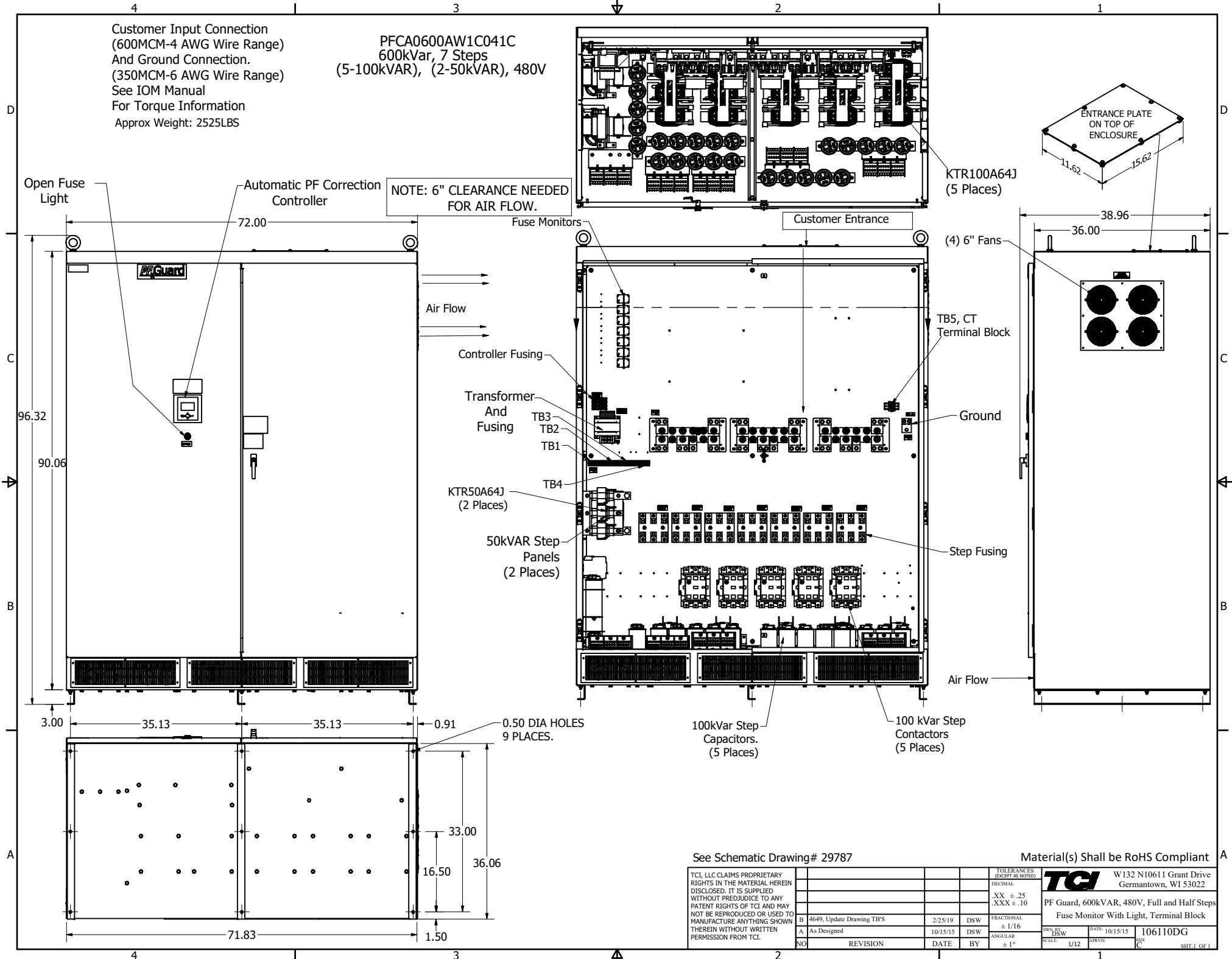


Customer Input Connection
 (600MCM-4 AWG Wire Range)
 And Ground Connection.
 (350MCM-6 AWG Wire Range)
 See IOM Manual
 For Torque Information
 Approx Weight: 2525LBS

PFCA0600AW1C041C
 600kVar, 7 Steps
 (5-100kVAR), (2-50kVAR), 480V

NOTE: 6" CLEARANCE NEEDED
 FOR AIR FLOW.



See Schematic Drawing# 29787

Material(s) Shall be RoHS Compliant

TCL, LLC CLAIMS PROPRIETARY RIGHTS IN THE MATERIAL HEREIN DISCLOSED. IT IS SUPPLIED WITHOUT PREJUDICE TO ANY PATENT RIGHTS OF TCL AND MAY NOT BE REPRODUCED OR USED TO MANUFACTURE ANYTHING SHOWN THEREIN WITHOUT WRITTEN PERMISSION FROM TCL.

REV	DESCRIPTION	DATE	BY
B	4649, Update Drawing TBS	2/25/19	DSW
A	As Designed	10/15/15	DSW
NO	REVISION	DATE	BY

TOLERANCES (EXCEPT AS NOTED)	
DECIMAL	.XX ± .25 .XXX ± .10
FRACTIONAL	± 1/16
ANGULAR	± 1°

TCL W132 N10611 Grant Drive
 Germantown, WI 53022

PF Guard, 600kVAR, 480V, Full and Half Steps
 Fuse Monitor With Light, Terminal Block

OWN BY: DSW DATE: 10/15/15 106110DG
 SCALE: 1/12 DRAWN BY: CJC SHEET 1 OF 1