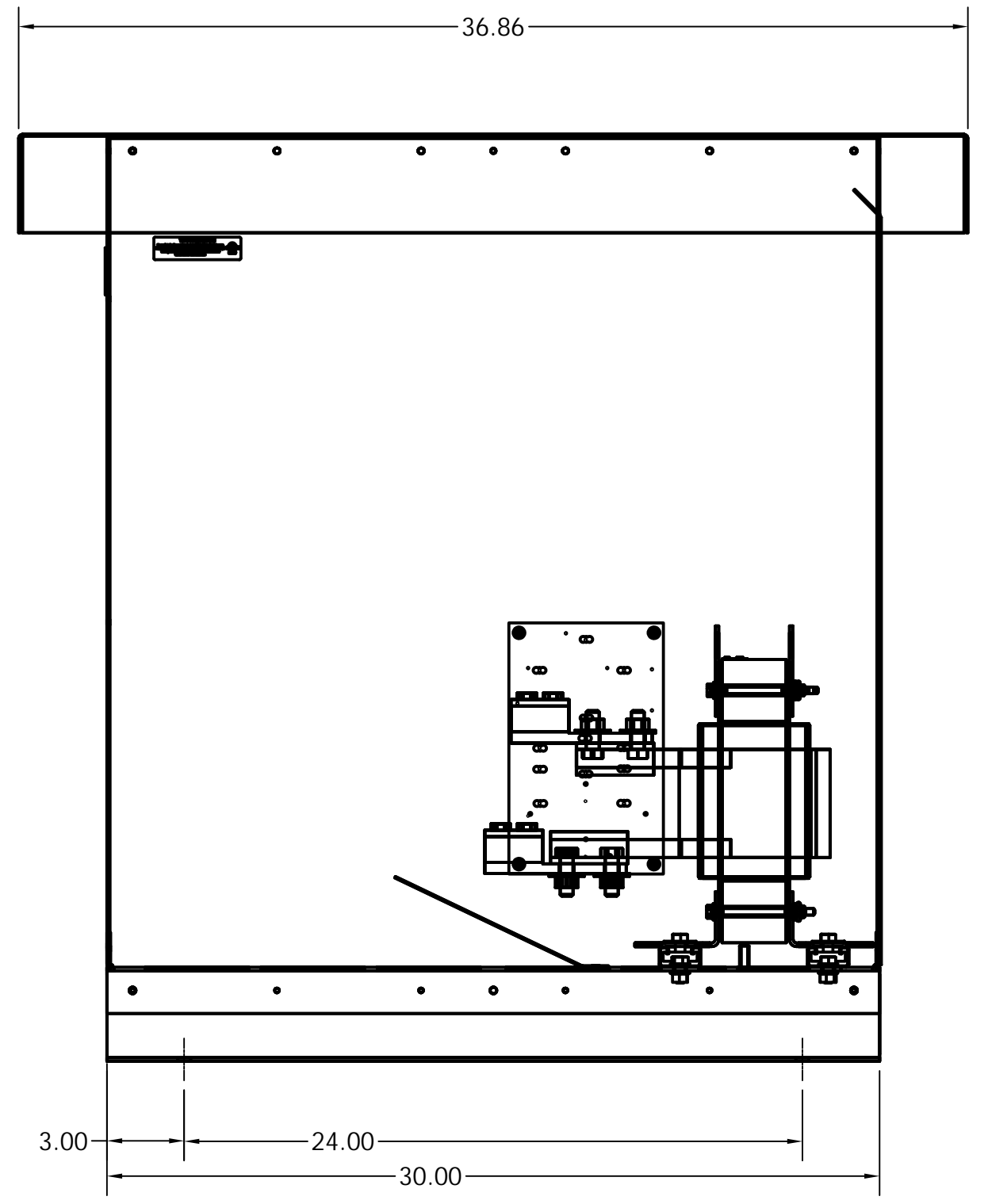
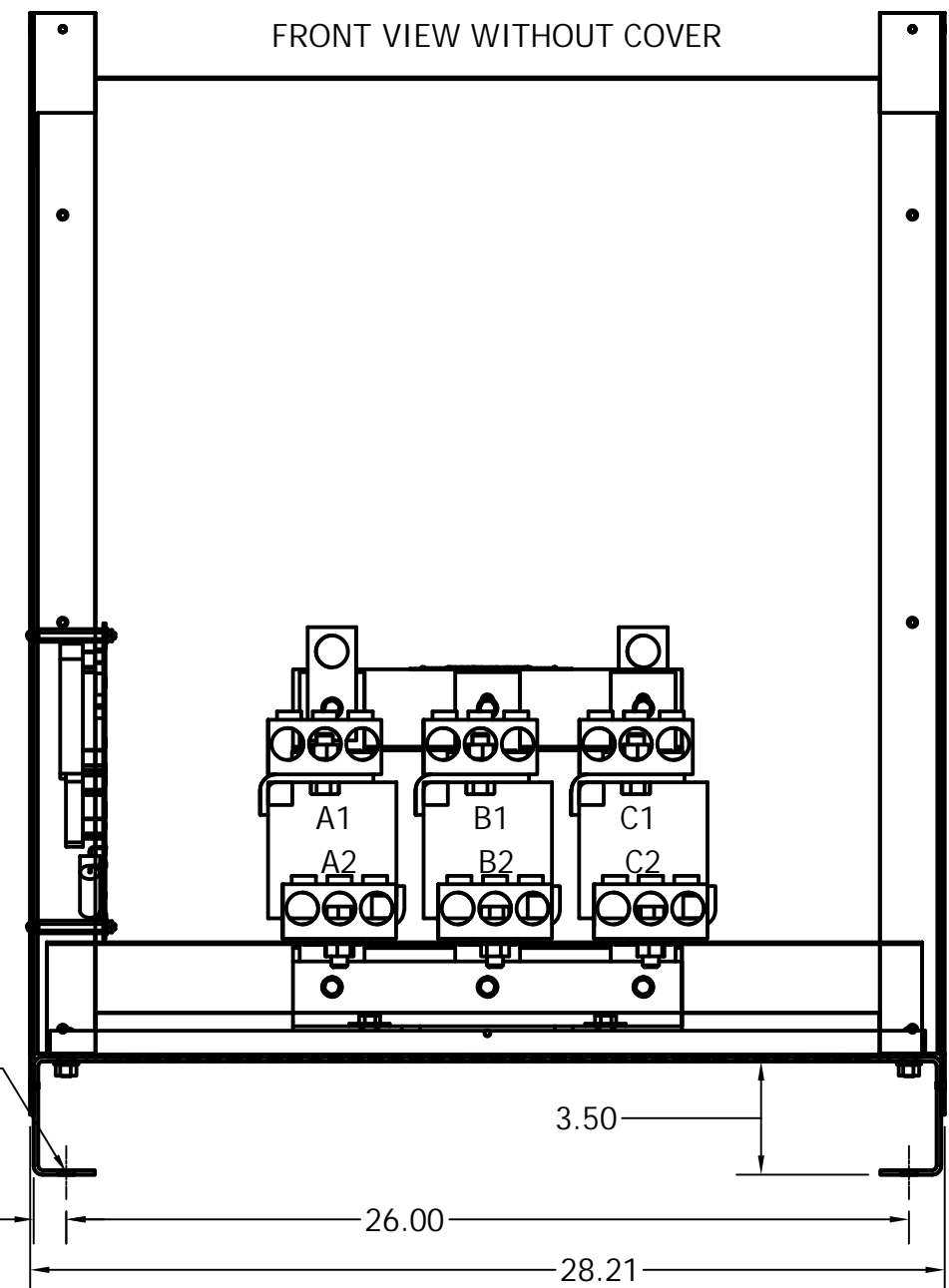
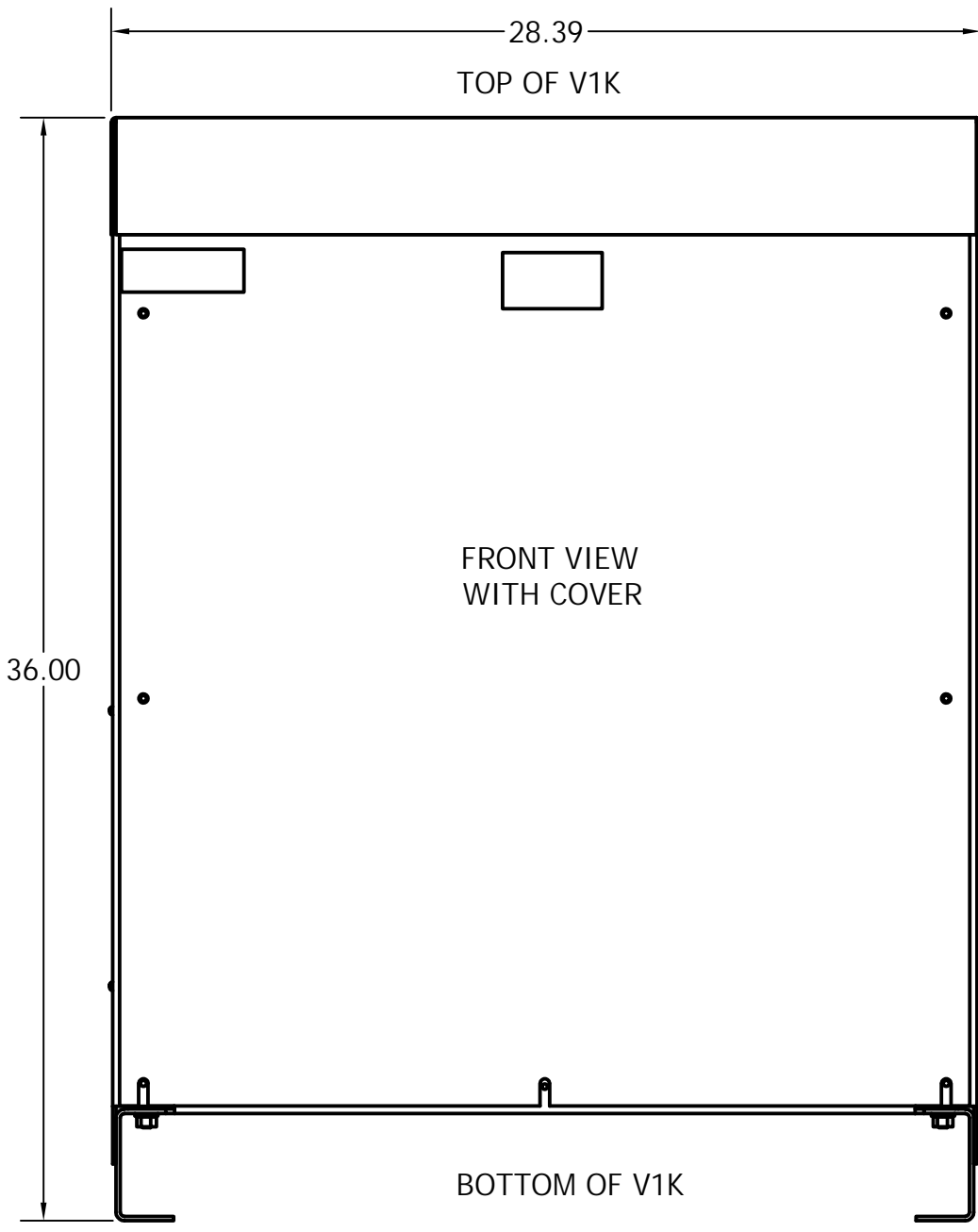
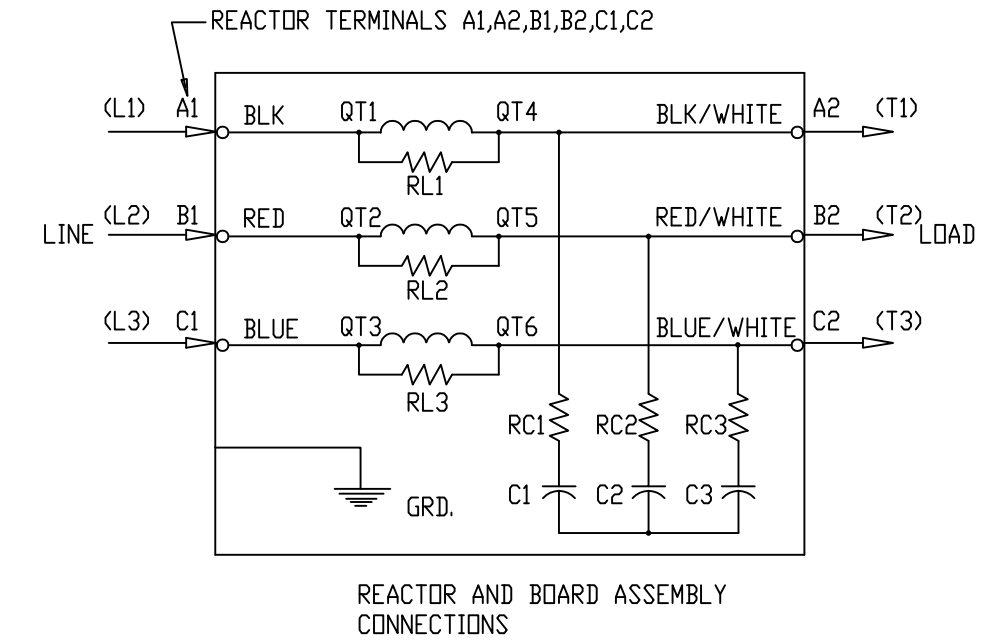
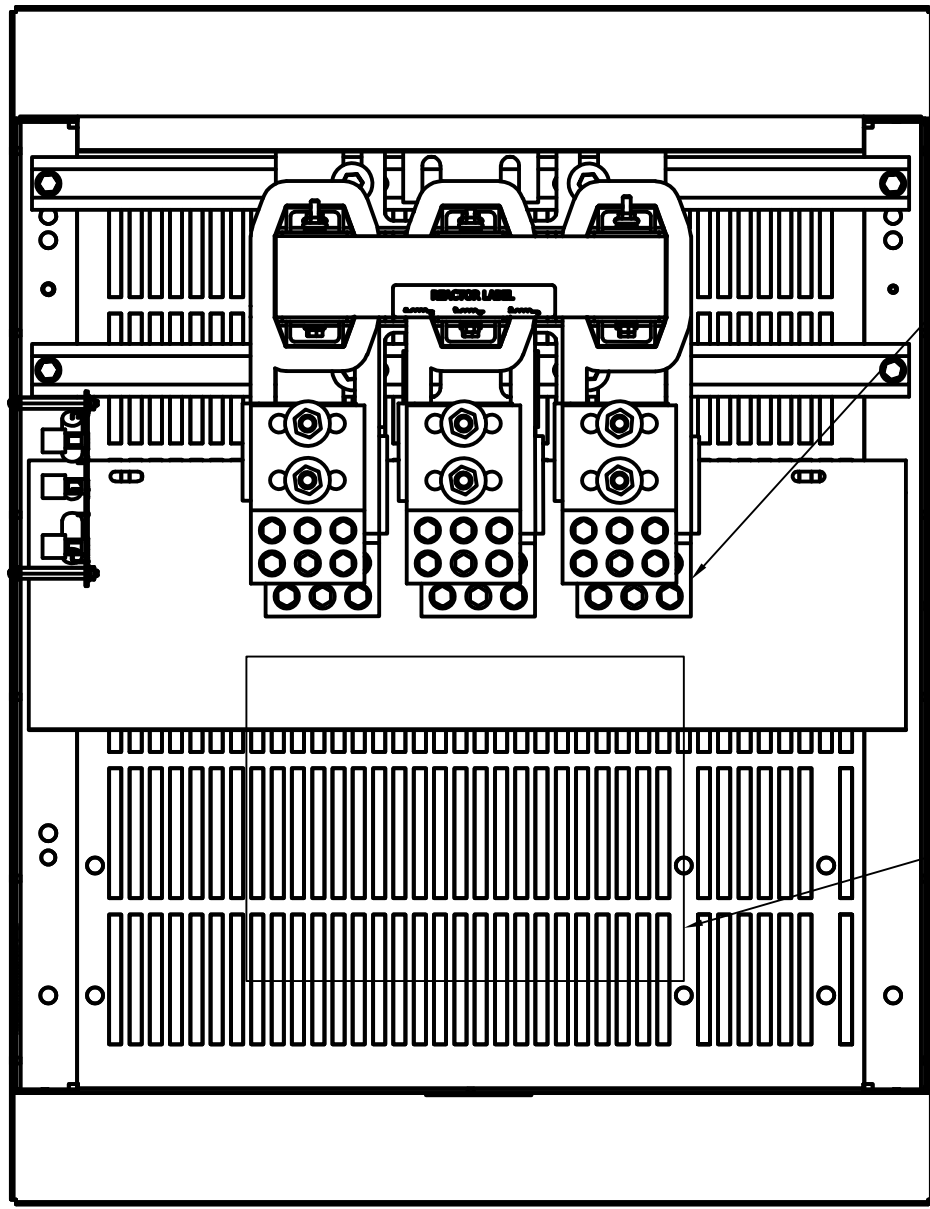


SEE V1K INSTALLATION GUIDE FOR TERMINAL WIRE SIZE AND TORQUE
 NOTE: MAINTAIN CLEARANCE OF 3 INCHES ON ALL SIDES TO OTHER EQUIPMENT

V1K Part Number	Rated Voltage	Amps	Phase	Weight (LBS)
V1K750A03	600	750	3	307
V1K750A03EX	600	750	3	307



NOTE: USE ONLY HUBS OR FITTINGS THAT COMPLY WITH UL514B FOR TYPE 3R ENCLOSURES
 CUSTOMER IS RESPONSIBLE FOR INSTALLATION TO MEET ALL NATIONAL AND LOCAL ELECTRICAL CODES

TCL LLC CLAIMS PROPRIETARY RIGHTS IN THE MATERIAL HEREIN DISCLOSED. IT IS SUPPLIED WITHOUT PREJUDICE TO ANY PATENT RIGHTS OF TCL AND MAY NOT BE REPRODUCED OR USED TO MANUFACTURE ANYTHING SHOWN THEREIN WITHOUT WRITTEN PERMISSION FROM TCL.

NO	REVISION	DATE	BY
D	4030, V1K DRAWING UPDATE	6/30/17	JSM

TOLERANCES (EXCEPT AS NOTED)	
DECIMAL	.XX ± .25 .XXX ± .10
FRACTIONAL	± 1/16
ANGULAR	± 1°

TCL® W132 N10611 Grant Drive
 Germantown, WI 53022

V1K, TYPE 3R
750 AMPS

DRN. BY: JSM DATE: 6/30/17
 SCALE: NONE APRVD: [Signature] SIZE: C

104240DG
 SHT 1 OF 1

MATERIAL(S) SHALL BE RoHS COMPLIANT