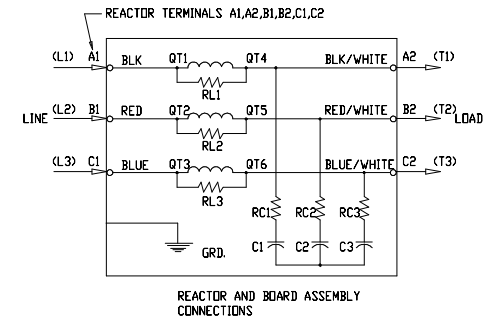
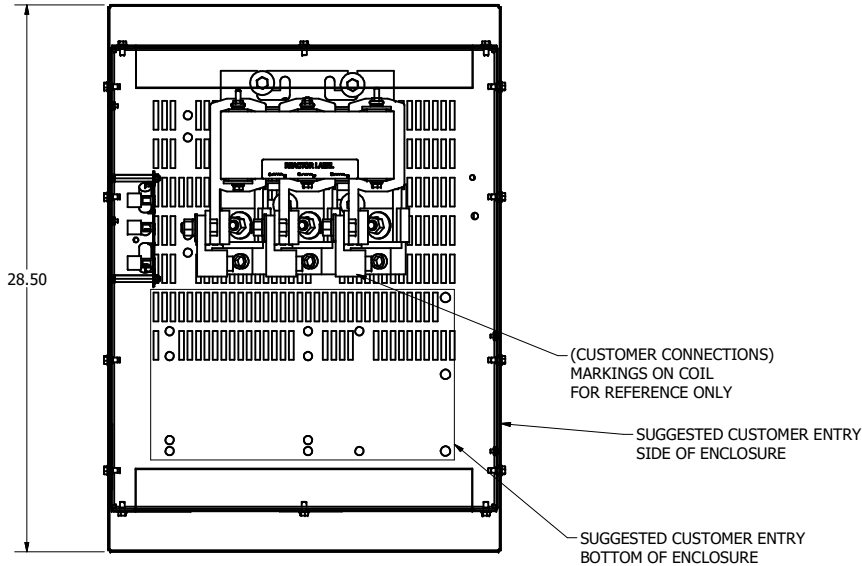
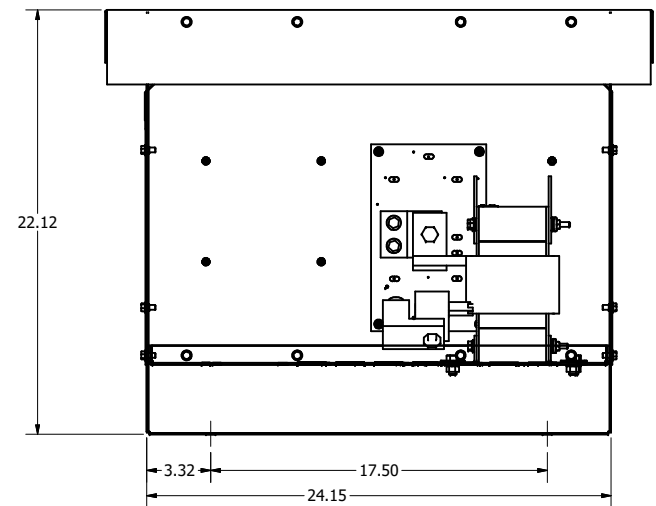
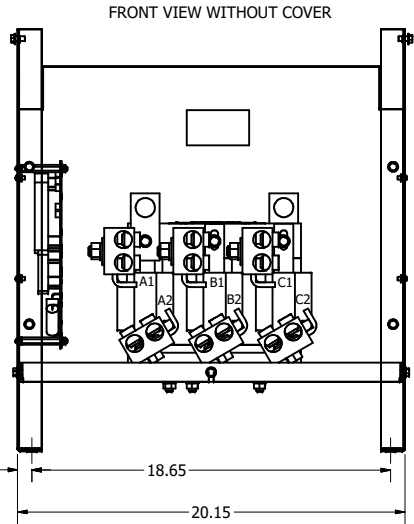
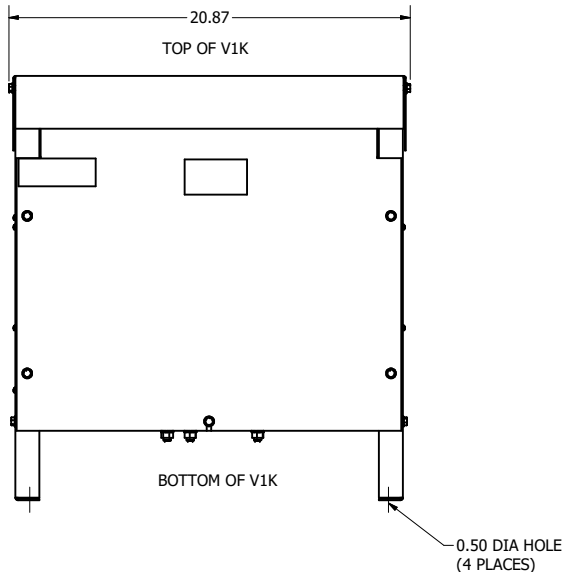


SEE V1K INSTALLATION GUIDE FOR TERMINAL WIRE SIZE AND TORQUE  
 NOTE: MAINTAIN CLEARANCE OF 3 INCHES ON ALL SIDES TO OTHER EQUIPMENT

V1K Part Number	Max Voltage	Amps	Phase	Weight (LBS)
V1K480A03	600	480	3	161
V1K480A03EX	600	480	3	161



REACTOR AND BOARD ASSEMBLY CONNECTIONS



NOTE: USE ONLY HUBS OR FITTINGS THAT COMPLY WITH UL514B FOR TYPE 3R ENCLOSURES

CUSTOMER IS RESPONSIBLE FOR INSTALLATION TO MEET ALL NATIONAL AND LOCAL ELECTRICAL CODES

MATERIAL(S) SHALL BE RoHS COMPLIANT

TCI, LLC CLAIMS PROPRIETARY RIGHTS IN THE MATERIAL HEREIN DISCLOSED. IT IS SUPPLIED WITHOUT PREJUDICE TO ANY PATENT RIGHTS OF TCI AND MAY NOT BE REPRODUCED OR USED TO MANUFACTURE ANYTHING SHOWN THEREIN WITHOUT WRITTEN PERMISSION FROM TCI.				TOLERANCES (EXCEPT AS NOTED) DECIMAL .XX ±.25 .XXX ±.10 FRACTIONAL ± 1/16 ANGULAR ± 1°		W132 N10611 Grant Drive Germantown, WI 53022 <b>TCI</b> V1K, TYPE 3R 480 AMPS 104238DG	
C	4658 Rated To Max Voltage	03/04/19	JRN	DATE	6/30/17	REVISED	104238DG
B	4030 DRAWING UPDATE	6/30/17	JSM	DATE		SCALE	NONE
NO	REVISION	DATE	BY				SHT 1 OF 1