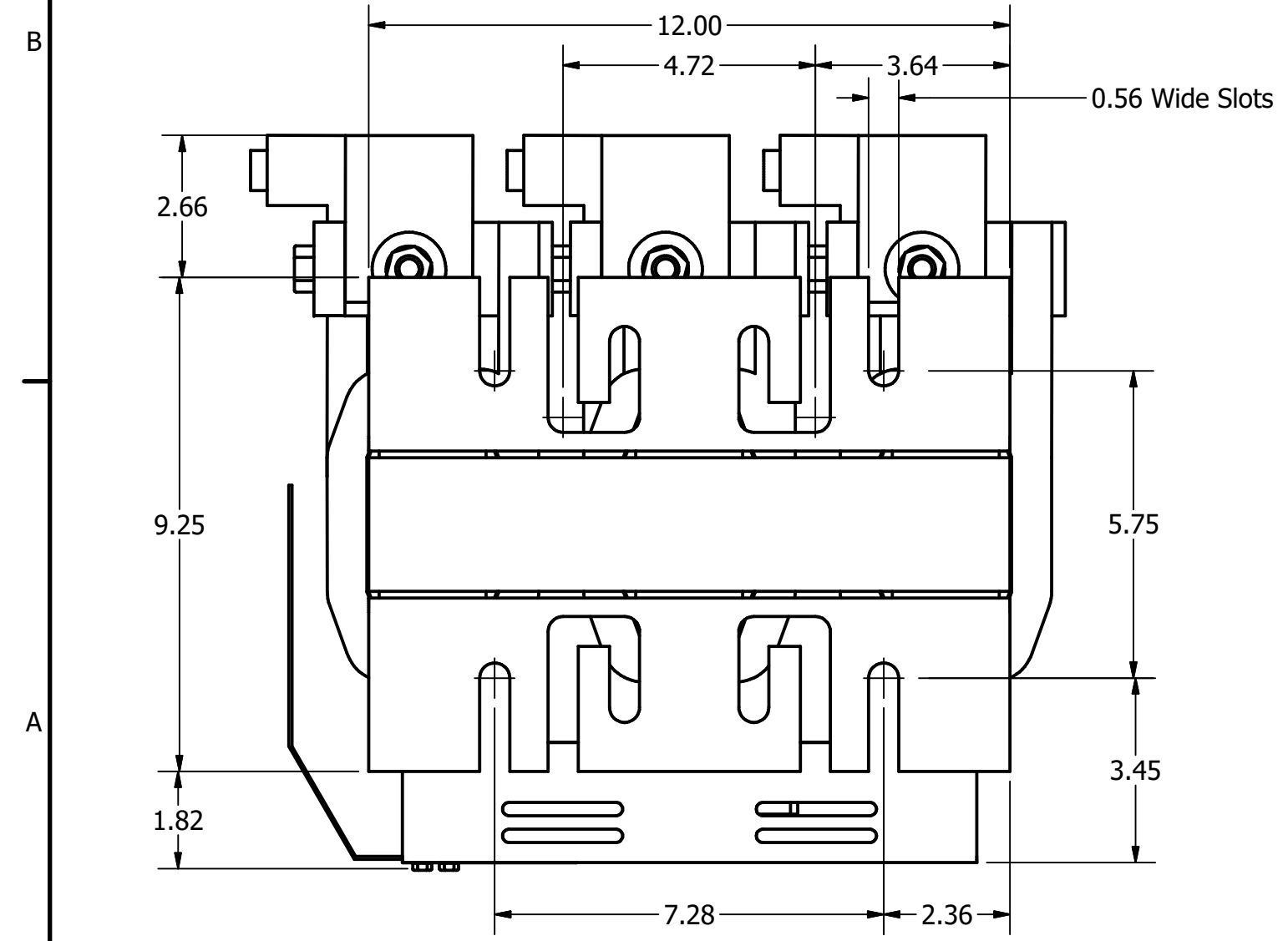
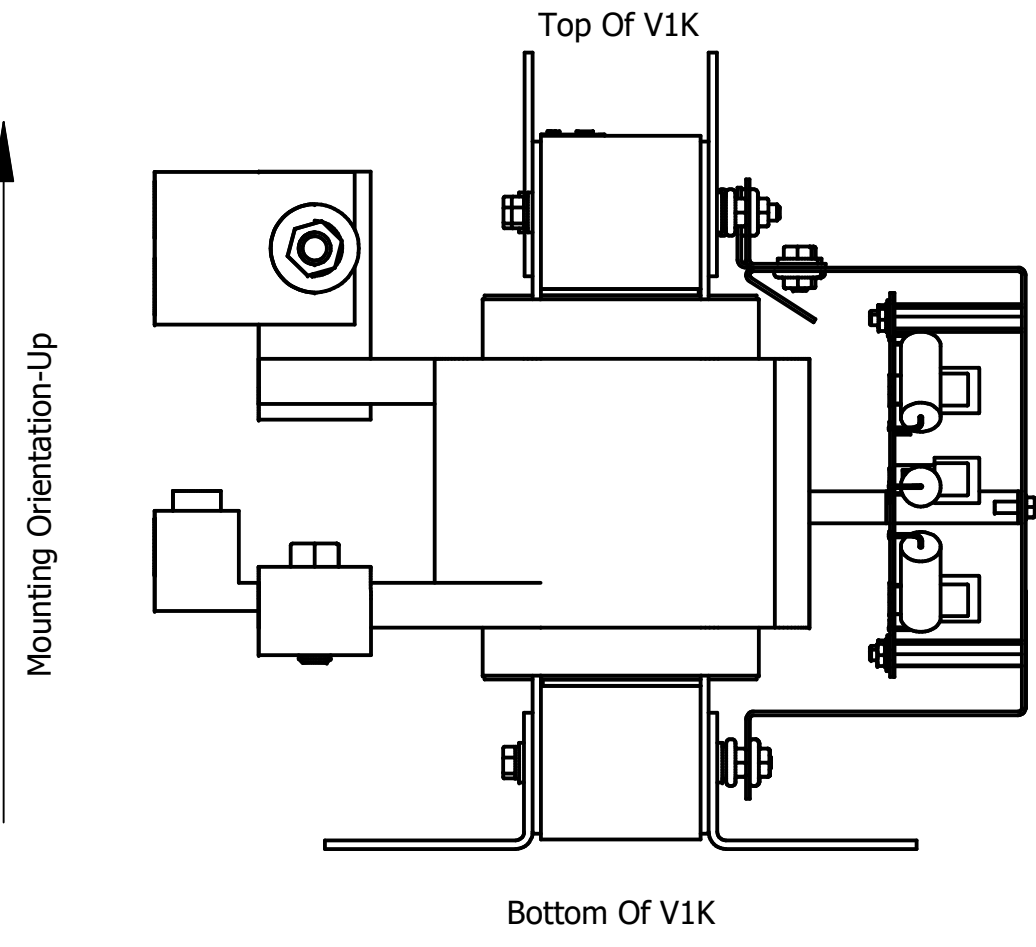
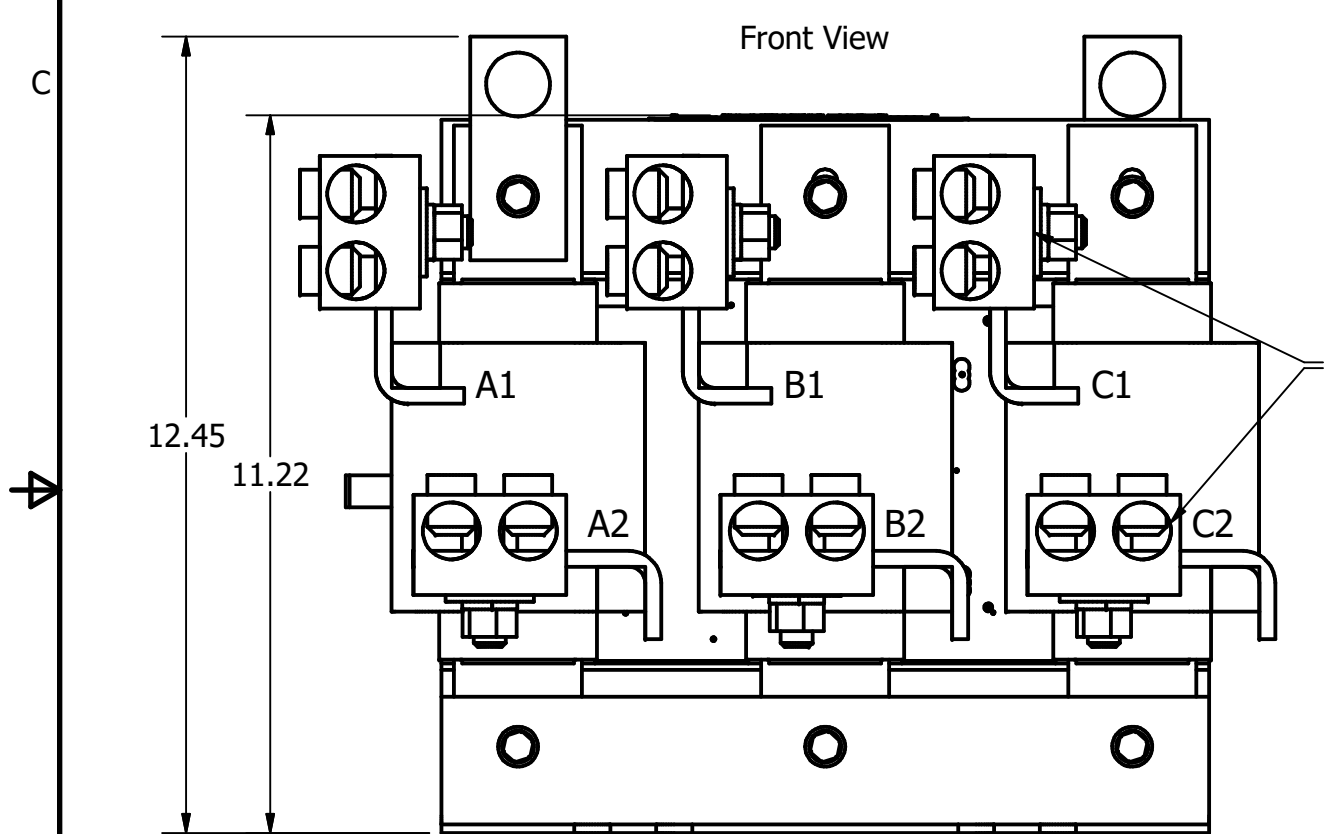
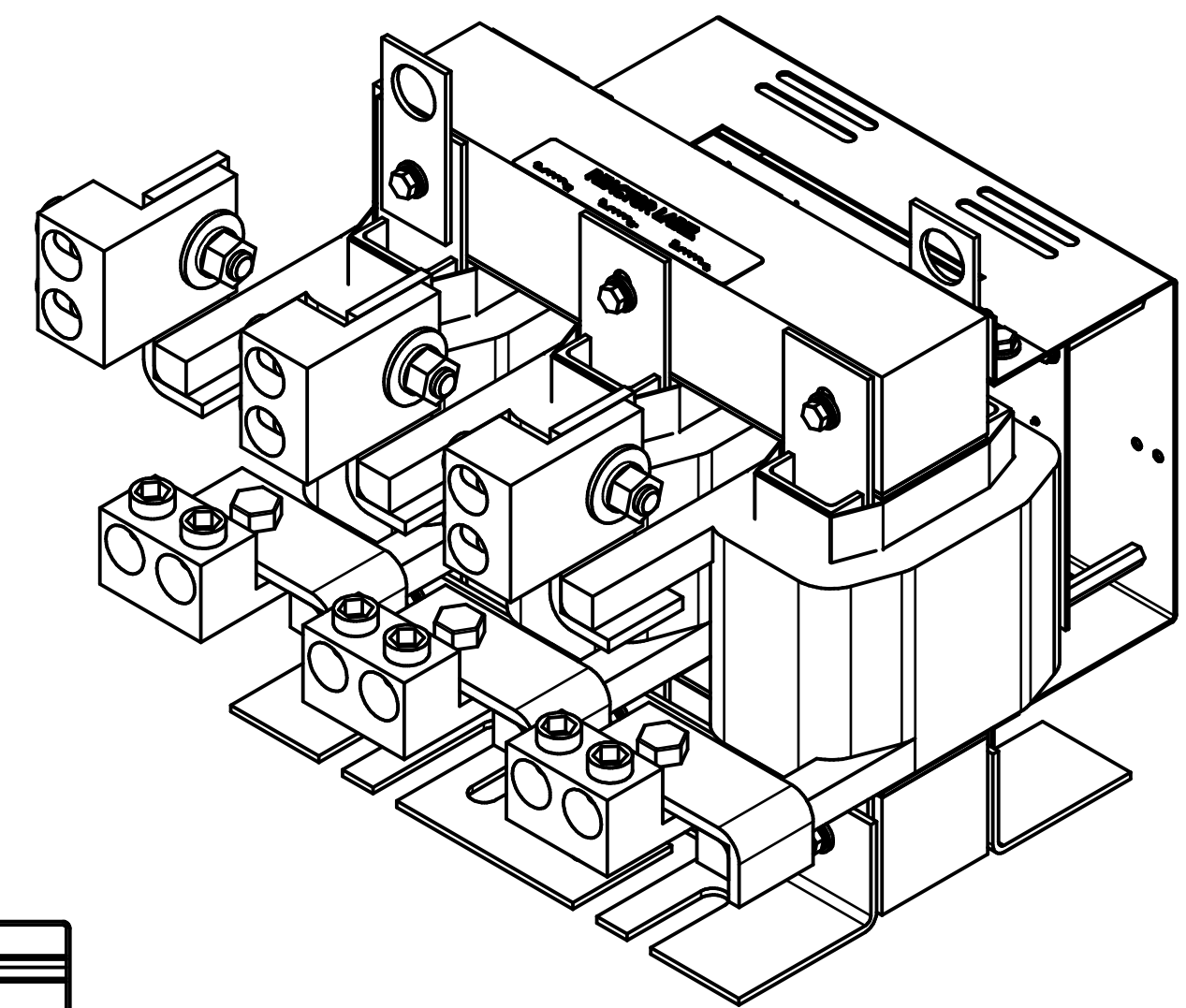
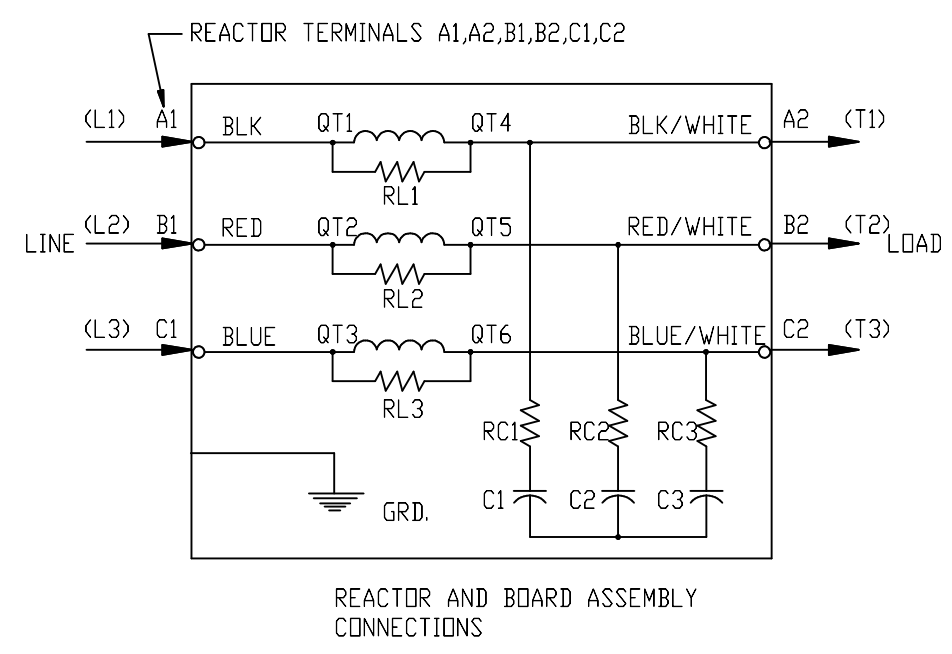
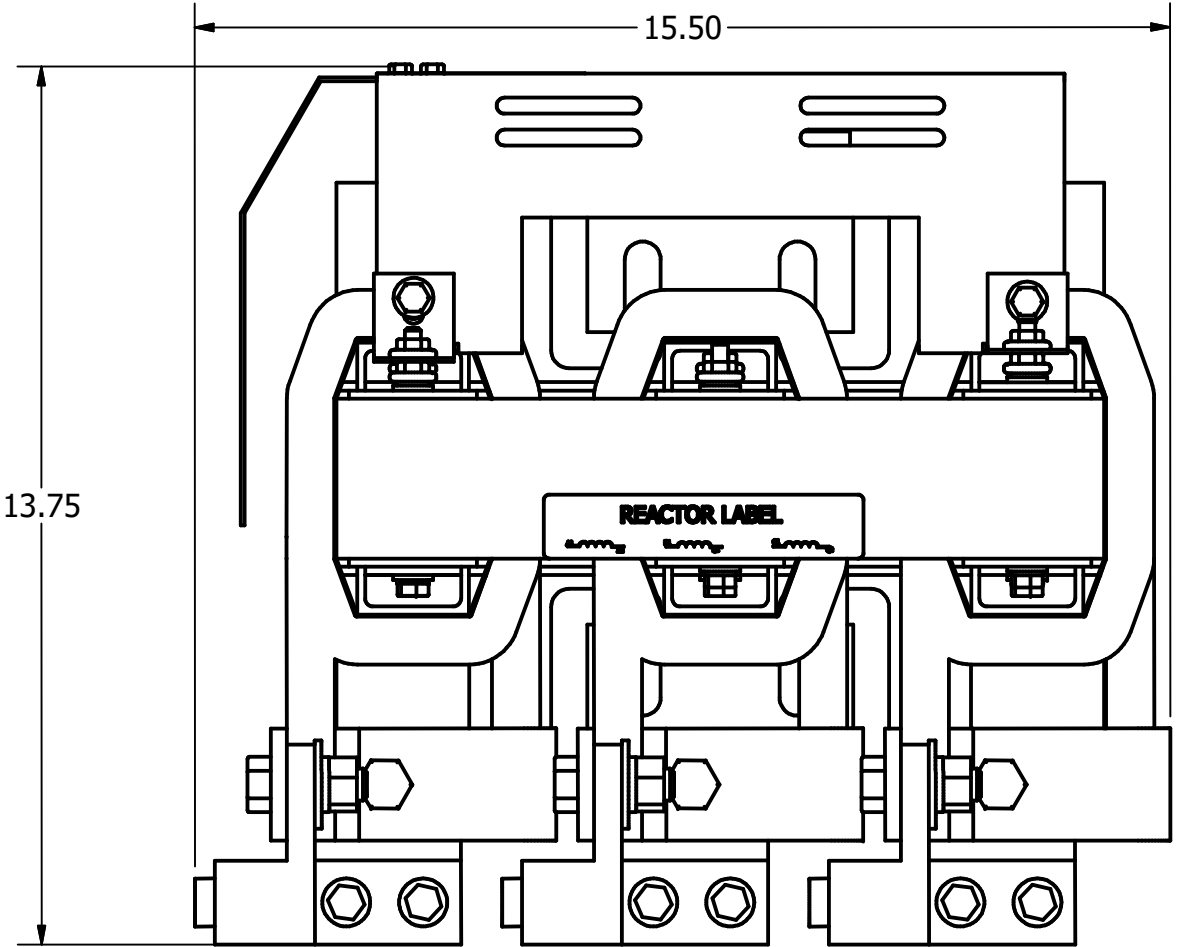


V1K Part Number	Max Voltage	Amps	Phase	Weight (LBS)
V1K600A00	600	600	3	130
V1K600A00EX	600	600	3	130

See V1K Installation Guide For Terminal Wire Size And Torque Information.
 Note: Maintain Clearance of 3 Inches On All Sides To Other Equipment.



Customer Is Responsible For Installation to Meet All National And Local Electrical Codes.
 Material(s) Shall be RoHS Compliant

TCI, LLC CLAIMS PROPRIETARY RIGHTS IN THE MATERIAL HEREIN DISCLOSED. IT IS SUPPLIED WITHOUT PREJUDICE TO ANY PATENT RIGHTS OF TCI AND MAY NOT BE REPRODUCED OR USED TO MANUFACTURE ANYTHING SHOWN THEREIN WITHOUT WRITTEN PERMISSION FROM TCI.	TOLERANCES (EXCEPT AS NOTED)			W132 N10611 Grant Drive Germantown, WI 53022
	DECIMAL			
	FRACTIONAL			DRN BY: DSW DATE: 6/19/17
	ANGULAR			SCALE: TO FIT
H	4658 Rated To Max Voltage	03/06/19	JRN	102659DG
G	4030, Combine V1k Drawings	6/19/17	DSW	
NO	REVISION	DATE	BY	SIZE C

D
C
B
A