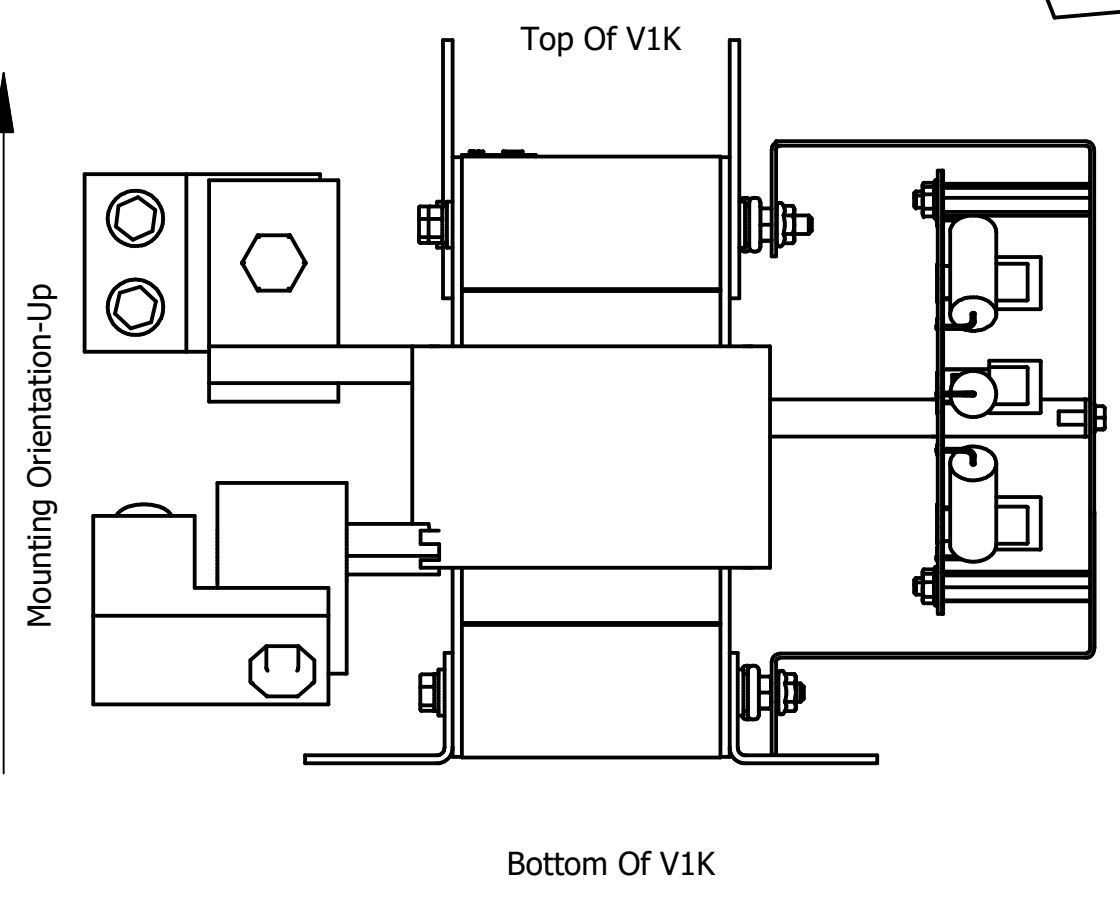
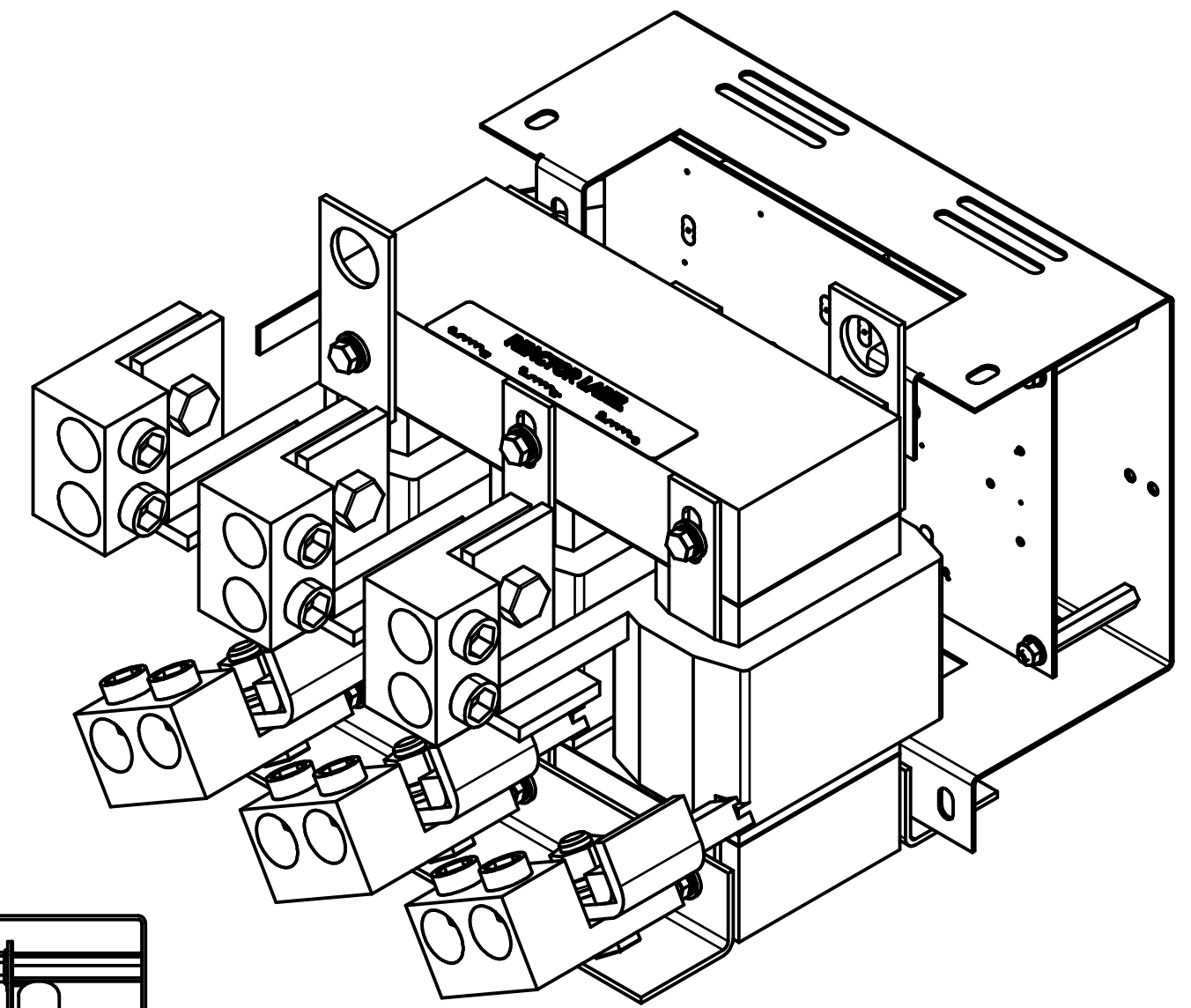
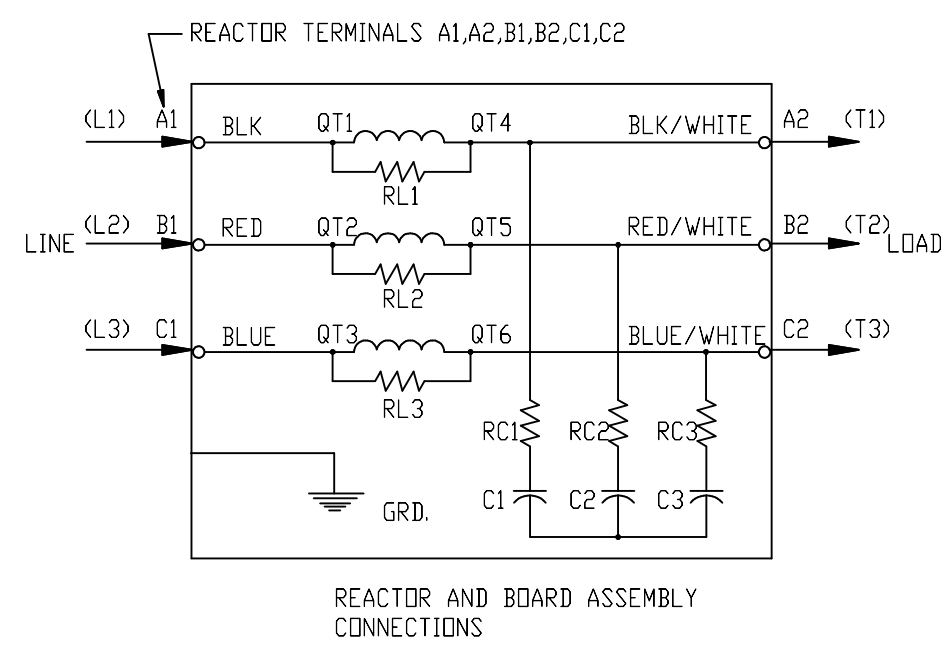


See V1K Installation Guide For Terminal Wire Size And Torque Information.
 Note: Maintain Clearance of 3 Inches On All Sides To Other Equipment.

V1K Part Number	Max Voltage	Amps	Phase	Weight (LBS)
V1K480A00	600	480	3	100
V1K480A00EX	600	480	3	100



(Customer Connections) Markings On Coil For Reference Only.

Customer Is Responsible For Installation to Meet All National And Local Electrical Codes.
 Material(s) Shall be RoHS Compliant

TCI, LLC CLAIMS PROPRIETARY RIGHTS IN THE MATERIAL HEREIN DISCLOSED. IT IS SUPPLIED WITHOUT PREJUDICE TO ANY PATENT RIGHTS OF TCI AND MAY NOT BE REPRODUCED OR USED TO MANUFACTURE ANYTHING SHOWN THEREIN WITHOUT WRITTEN PERMISSION FROM TCI.				TOLERANCES (EXCEPT AS NOTED) DECIMAL .XX ± .25 .XXX ± .10 FRACTIONAL ± 1/16 ANGULAR ± 1°		W132 N10611 Grant Drive Germantown, WI 53022 V1K, Open 480 Amps	
I	4658 Rated To Max Voltage	03/06/19	JRN	DRN BY DSW	DATE 6/19/17	SCALE TO FIT	APRVD: 102658DG
H	4030, Combine V1k Drawings	6/19/17	DSW	NO	REVISION	DATE	BY

4
3
2
1

D
C
B
A

D
C
B
A

4
3
2
1