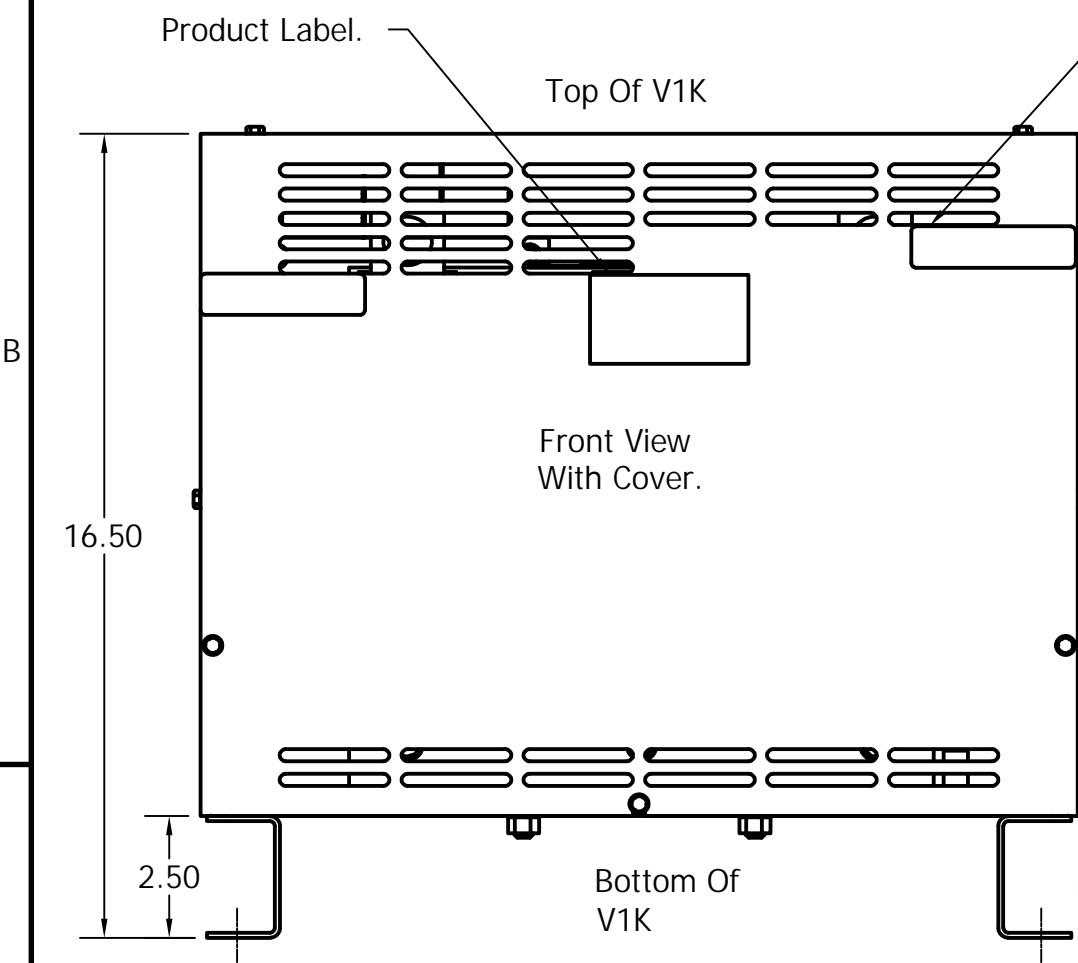
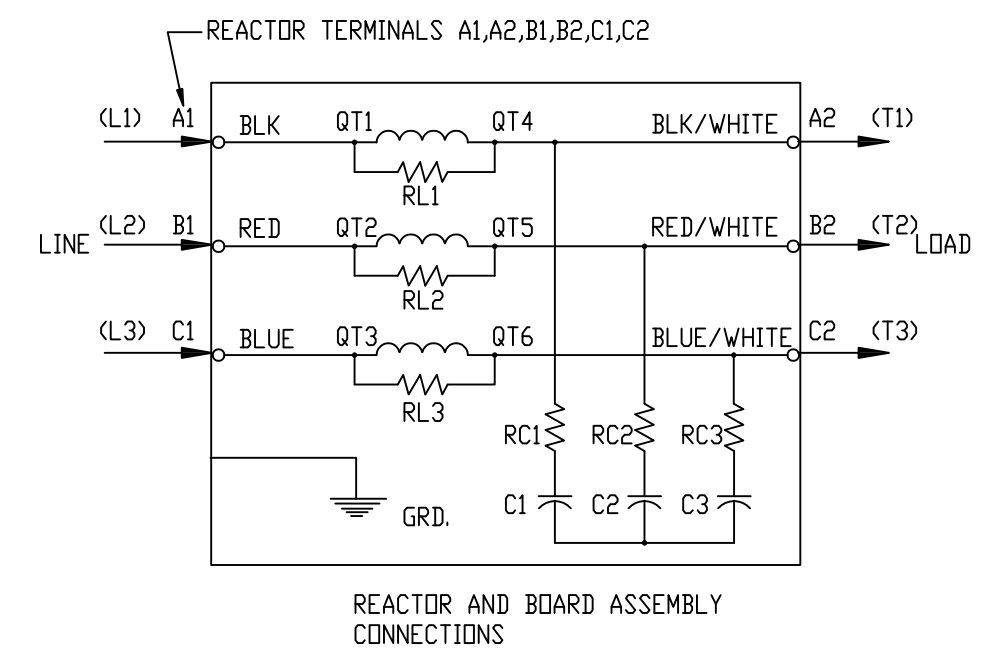


V1K Part Number	Rated Voltage	Amps	Phase	Weight (LBS)
V1K750A01	600	750	3	180
V1K750A01EX	600	750	3	180

(0.50-13, Ground Stud.)

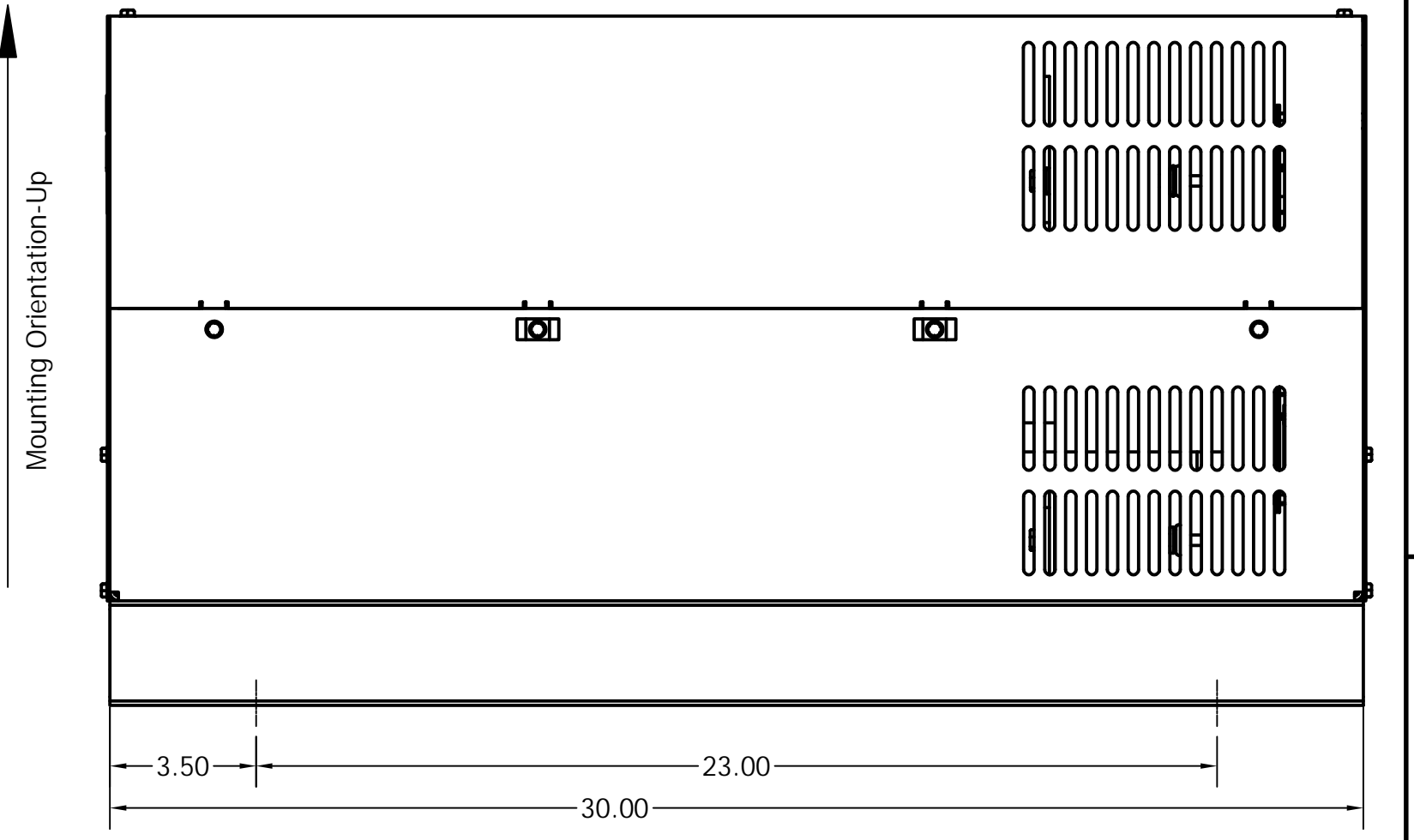
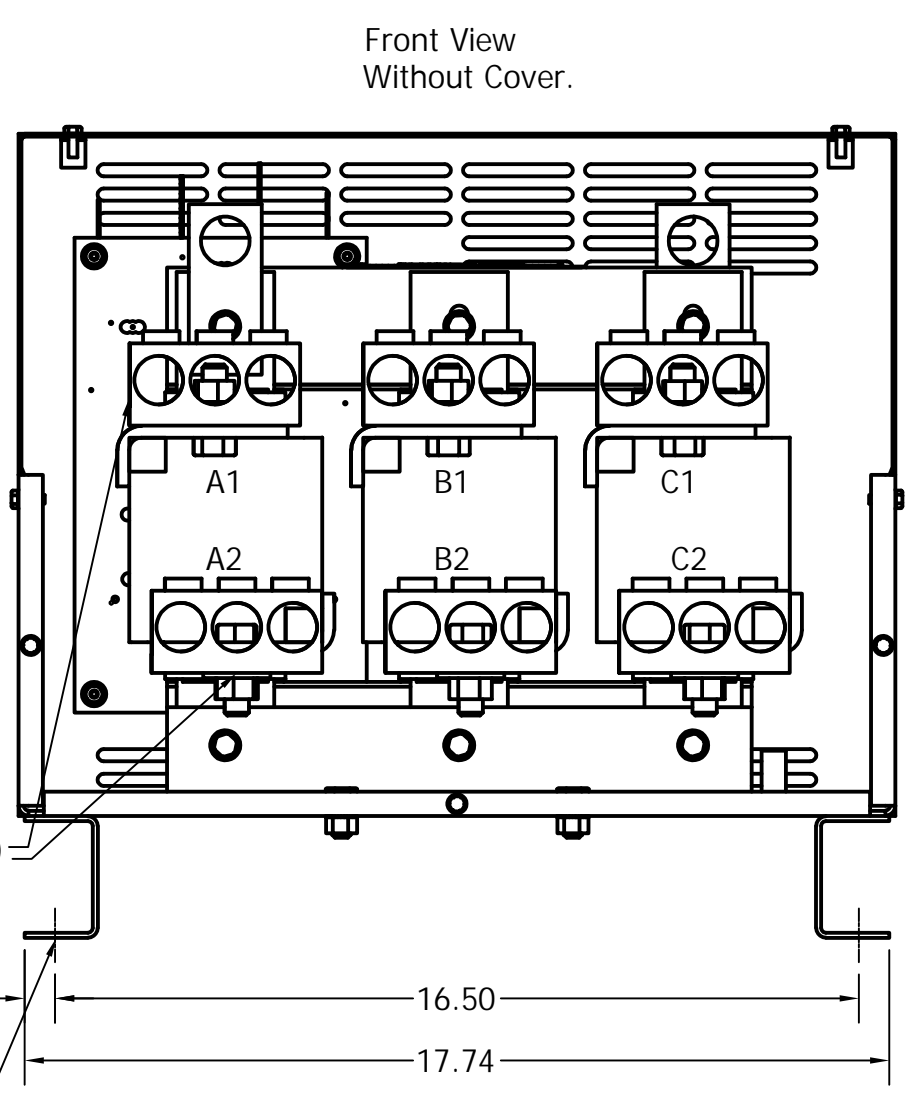
Suggested Customer Entrance (Bottom Entry)

Suggested Customer Entrance (Either Side)



(Customer Connections) Markings On Coil For Reference Only.

0.41 Dia Mounting Holes - 4 Places.



Customer Is Responsible For Installation to Meet All National And Local Electrical Codes.

Material(s) Shall be RoHS Compliant

TCL LLC CLAIMS PROPRIETARY RIGHTS IN THE MATERIAL HEREIN DISCLOSED. IT IS SUPPLIED WITHOUT PREJUDICE TO ANY PATENT RIGHTS OF TCL AND MAY NOT BE REPRODUCED OR USED TO MANUFACTURE ANYTHING SHOWN THEREIN WITHOUT WRITTEN PERMISSION FROM TCL.

NO	REVISION	DATE	BY
G	4030, Combine, Update V1K Drawings	6/23/17	

TOLERANCES (EXCEPT AS NOTED)  
DECIMAL  
.XX ± .25  
.XXX ± .10  
FRACTIONAL  
± 1/16  
ANGULAR  
± 1°

**TCL**® W132 N10611 Grant Drive  
Germantown, WI 53022

V1K, Enclosed, TYPE 1  
750 Amps

DRN BY: DSW DATE: 4/26/17  
SCALE: TO FIT APRVD: SIZE: 102417DG  
SHT 1 OF 1