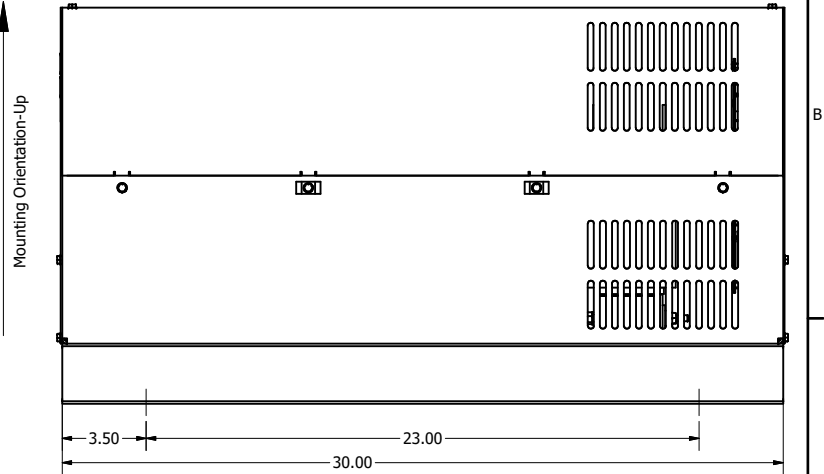
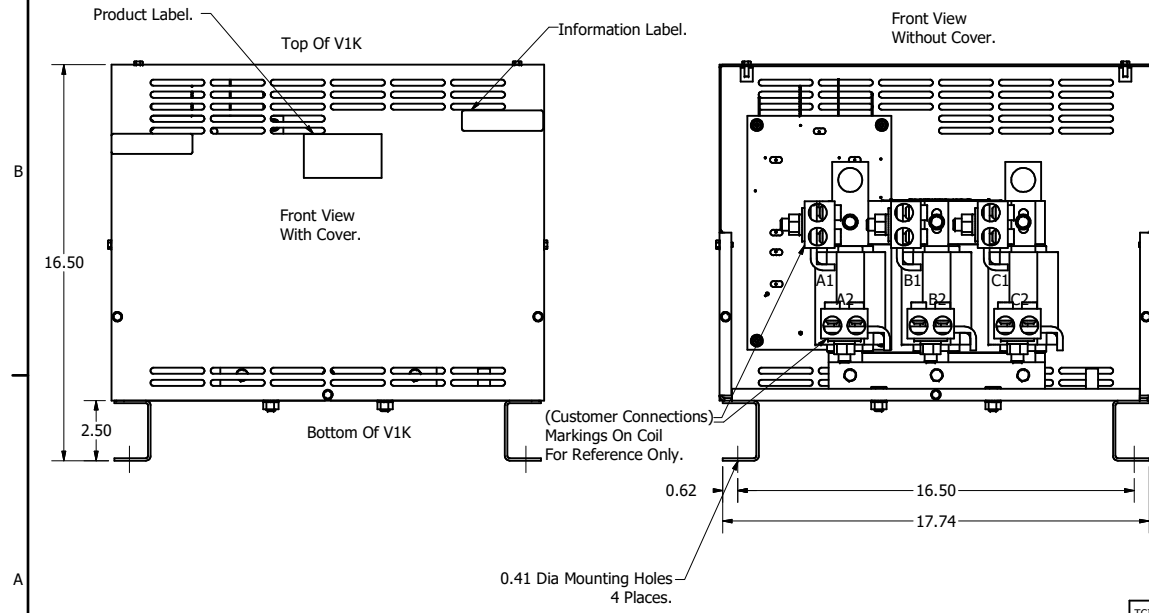
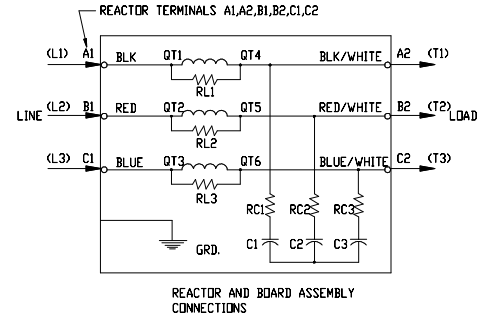


V1K Part Number	Max Voltage	Amps	Phase	Weight (LBS)
V1K305A01	600	305	3	117
V1K305A01EX	600	305	3	117
V1K362A01	600	362	3	117
V1K362A01EX	600	362	3	117



Customer Is Responsible For Installation to Meet All National And Local Electrical Codes. Material(s) Shall be RoHS Compliant

TCI, LLC CLAIMS PROPRIETARY RIGHTS IN THE MATERIAL HEREIN DISCLOSED. IT IS SUPPLIED WITHOUT PREJUDICE TO ANY PATENT RIGHTS OF TCI AND MAY NOT BE REPRODUCED OR USED TO MANUFACTURE ANYTHING SHOWN THEREIN WITHOUT WRITTEN PERMISSION FROM TCI.	1	4658 Rated To Max Voltage	03/04/19	JRN	FRACTIONAL	TCI W132 N10611 Grant Drive Germantown, WI 53022 V1K, Enclosed, TYPE 1 305Amps, 362Amps DRN BY: DSW DATE: 4/26/17 SCALE: TO FIT DRNVC: C102412DG SHEET 1 OF 1
	J	4030, Combine, Update V1K Drawings	6/23/17	DSW	ANGULAR	
	NO	REVISION	DATE	BY	± 1°	
	TOLERANCES (EXCEPT AS NOTED) DECIMAL .XX ± .25 .XXX ± .10 FRACTIONAL ± 1/16					