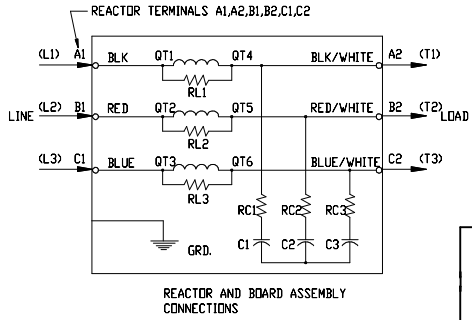
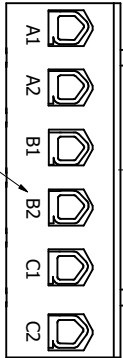


See V1K Installation Guide For Terminal Wire Size And Torque Information.

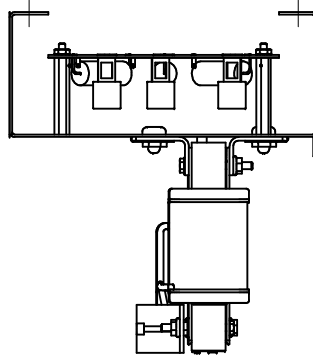
Note: Maintain Clearance of 3 Inches On All Sides To Other Equipment.



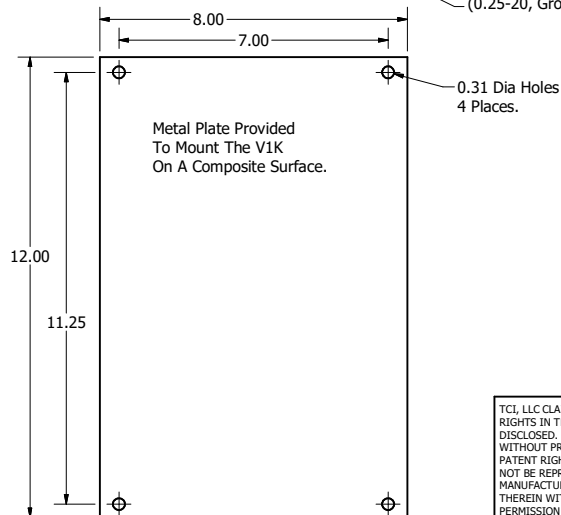
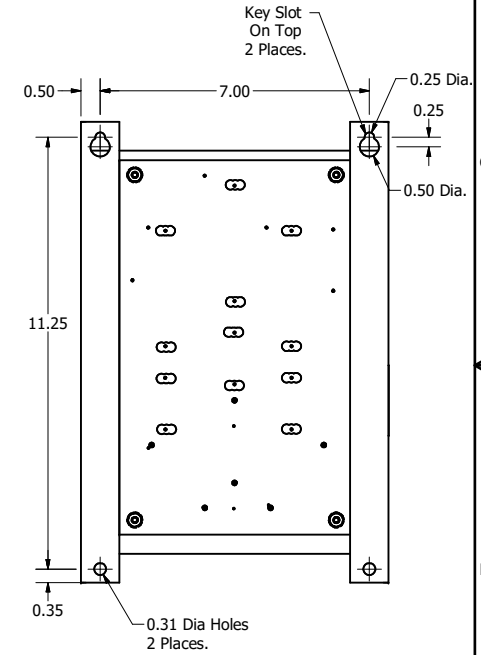
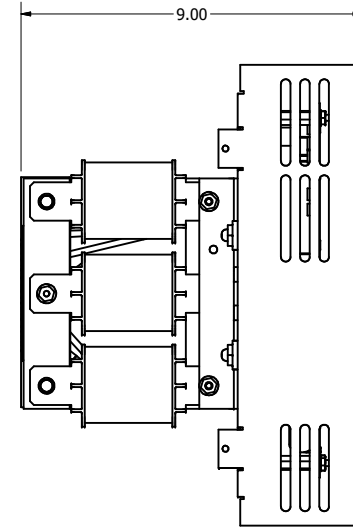
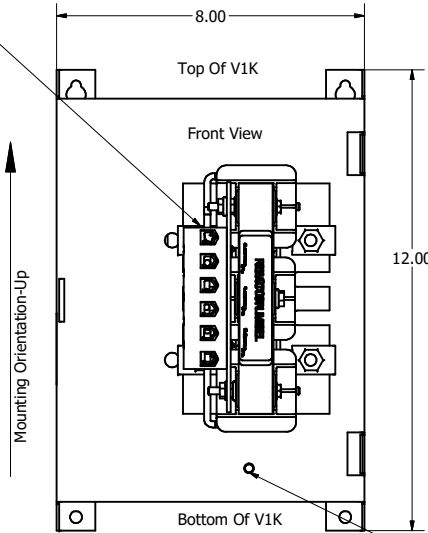
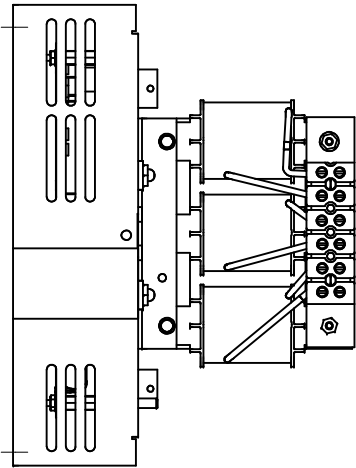
(Customer Connections) Markings On Terminal Block For Reference Only.



Back Of V1K Mounted Against Wall



V1K Part Number	Max Voltage	Amps	Phase	Weight (LBS)
V1K35A00	600	35	3	17
V1K35A00EX	600	35	3	17
V1K45A00	600	45	3	17
V1K45A00EX	600	45	3	17
V1K55A00	600	55	3	17
V1K55A00EX	600	55	3	17



Customer Is Responsible For Installation to Meet All National And Local Electrical Codes.

Material(s) Shall be RoHS Compliant

TCI, LLC CLAIMS PROPRIETARY RIGHTS IN THE MATERIAL HEREIN DISCLOSED. IT IS SUPPLIED WITHOUT PREJUDICE TO ANY PATENT RIGHTS OF TCI AND MAY NOT BE REPRODUCED OR USED TO MANUFACTURE ANYTHING SHOWN THEREIN WITHOUT WRITTEN PERMISSION FROM TCI.				TOLERANCES (EXCEPT AS NOTED)		W132 N10611 Grant Drive Germantown, WI 53022	
				DECIMAL			
				.XX ± .25 .XXX ± .10			
				FRACTIONAL		V1K, Open 35 Amps to 55 Amps	
				± 1/16			
HI	4658 Rated To Max Voltage	03/04/19	JRN	DRN BY	DATE	4/26/17	102397DG SHT 1 OF 1
G	4030, Combine V1k Drawings	6/7/17	DSW	SCALE	TO FIT		
NO	REVISION	DATE	BY				