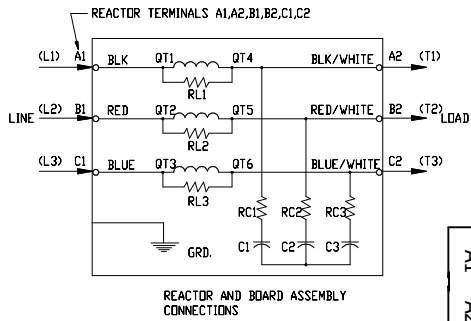
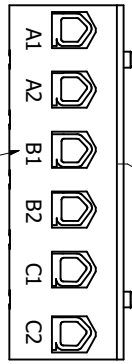


See V1K Installation Guide For Terminal Wire Size And Torque Information.

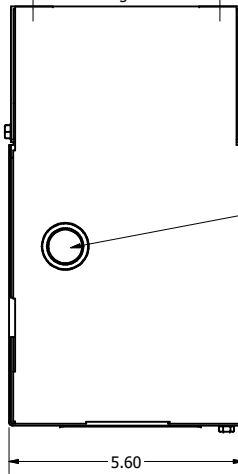
Note: Maintain Clearance of 3 Inches On All Sides To Other Equipment.



(Customer Connections) Markings On Terminal Block For Reference Only.

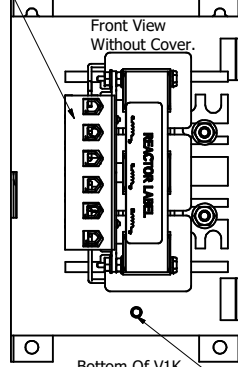


Back Of V1K Mounted Against Wall



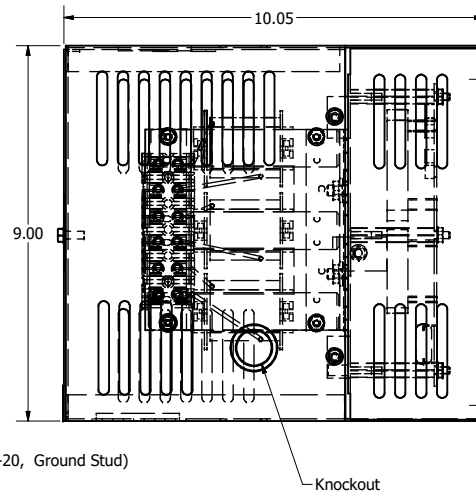
7/8-1/8 Knockouts 3 Places. For Customer Entry Options.

Top Of V1K

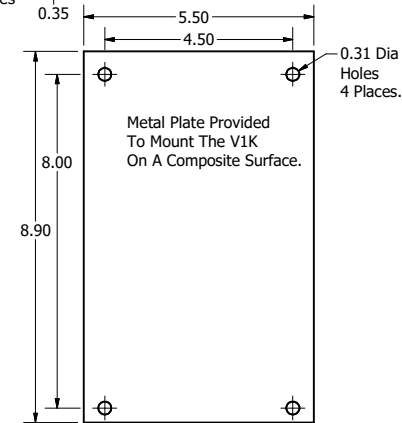
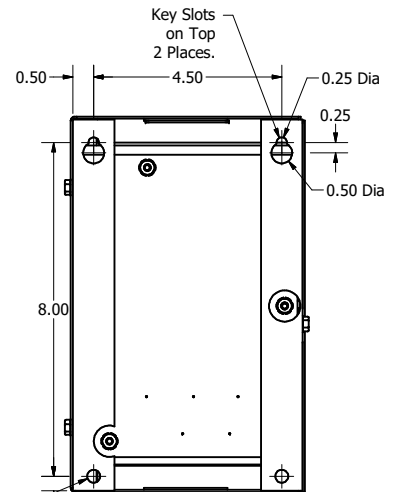


Bottom Of V1K

(0.25-20, Ground Stud)

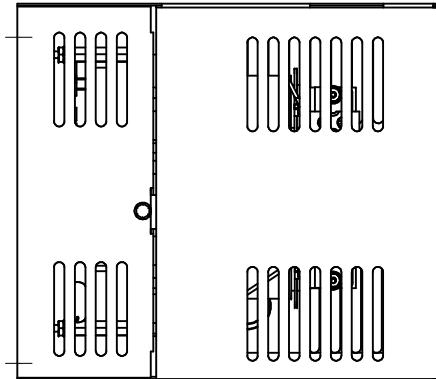


0.31 Dia Holes 2 Places



Metal Plate Provided To Mount The V1K On A Composite Surface.

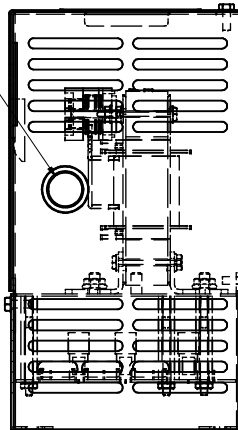
V1K Part Number	Max Voltage	Amps	Phase	Weight (LBS)
V1K16A01	600	16	3	15
V1K16A01EX	600	16	3	15
V1K18A01	600	18	3	15
V1K18A01EX	600	18	3	15
V1K21A01	600	21	3	15
V1K21A01EX	600	21	3	15
V1K25A01	600	25	3	15
V1K25A01EX	600	25	3	15
V1K27A01	600	27	3	15
V1K27A01EX	600	27	3	15



Front View With Cover.

Product Label.

Knockout



Information Label.

Customer Is Responsible For Installation To Meet All National And Local Electrical Codes.

Material(s) Shall be RoHS Compliant

TCI, LLC CLAIMS PROPRIETARY RIGHTS IN THE MATERIAL HEREIN DISCLOSED. IT IS SUPPLIED WITHOUT PREJUDICE TO ANY PATENT RIGHTS OF TCI AND MAY NOT BE REPRODUCED OR USED TO MANUFACTURE ANYTHING SHOWN THEREIN WITHOUT WRITTEN PERMISSION FROM TCI.

REV	DESCRIPTION	DATE	BY	SCALE
1	4658 Rated To Max Voltage	03/04/19	JRN	FRACTIONAL
2	4030, Combine V1K Drawings	6/23/17	DSW	± 1/16
NO	REVISION	DATE	BY	± 1"

TOLERANCES (EXCEPT AS NOTED)
DECIMAL
.XX ± .25
.XXX ± .10
FRACTIONAL
± 1/16
ANGULAR
± 1°

TCI W132 N10611 Grant Drive
Germantown, WI 53022

V1K, Enclosed, TYPE 1
16 Amps to 27 Amps

OWN BY: DSW DATE: 4/26/17
SCALE: TO FIT DRAWN BY: TCI
102324DG
SHT 1 OF 1