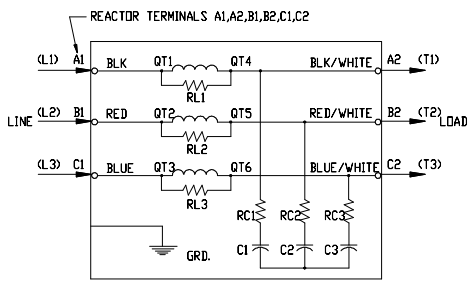


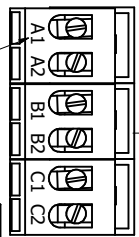
See V1K Installation Guide For Terminal Wire Size And Torque Information.

Note: Maintain Clearance of 3 Inches On All Sides To Other Equipment.

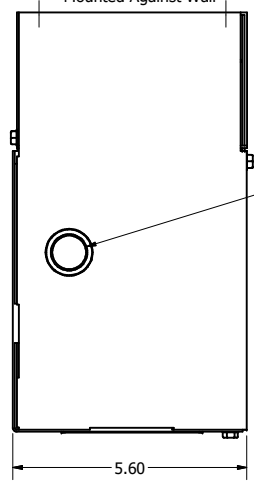


REACTOR AND BOARD ASSEMBLY CONNECTIONS

(Customer Connections) Markings On Terminal Block For Reference Only.

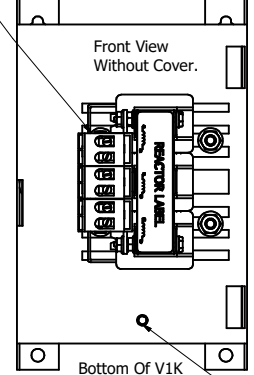


Back Of V1K Mounted Against Wall



7/8-1/8 Knockouts 3 Places. For Customer Entry Options.

Top Of V1K

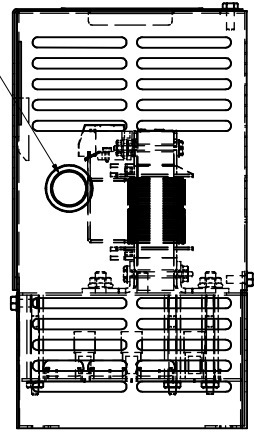


Bottom Of V1K

(0.25-20, Ground Stud)

Mounting Orientation-Up

Knockout

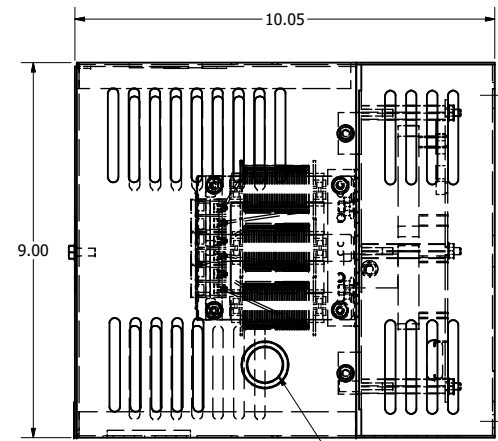


Front View With Cover.

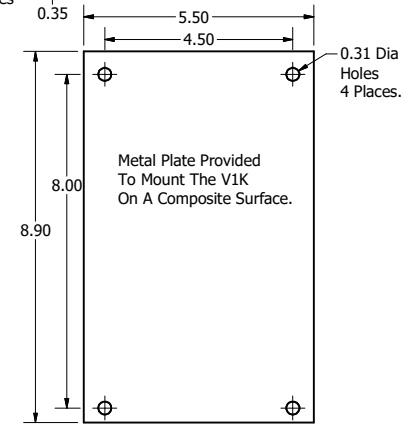
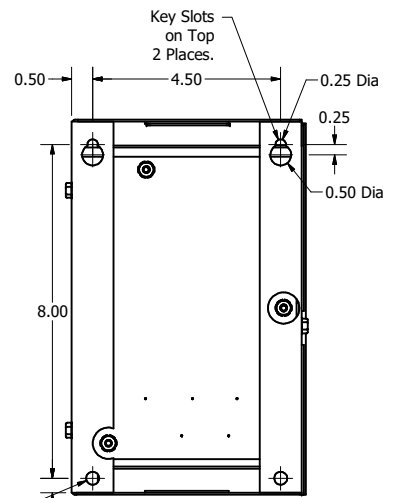
Product Label.

Information Label.

V1K Part Number	Max Voltage	Amps	Phase	Weight (LBS)
V1K2A01	600	2	3	11
V1K2A01EX	600	2	3	11
V1K3A01	600	3	3	11
V1K3A01EX	600	3	3	11
V1K4A01	600	4	3	11
V1K4A01EX	600	4	3	11
V1K6A01	600	6	3	11
V1K6A01EX	600	6	3	11
V1K8A01	600	8	3	11
V1K8A01EX	600	8	3	11
V1K12A01	600	12	3	11
V1K12A01EX	600	12	3	11



0.31 Dia Holes 2 Places



Metal Plate Provided To Mount The V1K On A Composite Surface.

Customer Is Responsible For Installation to Meet All National And Local Electrical Codes.  
Material(s) Shall be RoHS Compliant

TCI, LLC CLAIMS PROPRIETARY RIGHTS IN THE MATERIAL HEREIN DISCLOSED. IT IS SUPPLIED WITHOUT PREJUDICE TO ANY PATENT RIGHTS OF TCI AND MAY NOT BE REPRODUCED OR USED TO MANUFACTURE ANYTHING SHOWN THEREIN WITHOUT WRITTEN PERMISSION FROM TCI.

NO	REVISION	DATE	BY

TOLERANCES (EXCEPT AS NOTED)  
DECIMAL  
.XX ± .25  
.XXX ± .10  
FRACTIONAL  
± 1/16  
ANGULAR  
± 1°

**TCI** W132 N10611 Grant Drive  
Germantown, WI 53022

**V1K, Enclosed, TYPE 1**  
2 Amps to 12 Amps

OWN BY: DSW DATE: 4/26/17  
SCALE: TO FIT DRAWN BY: CFC  
102318DG  
SHT 1 OF 1