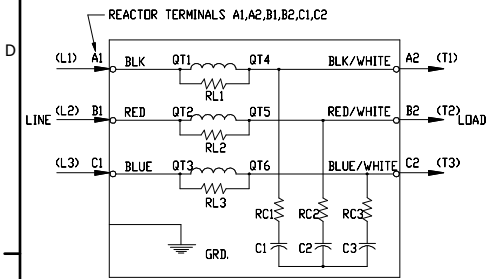


See V1K Installation Guide For Terminal Wire Size And Torque Information.

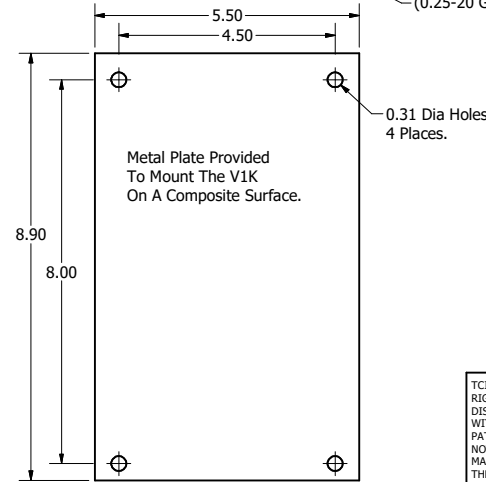
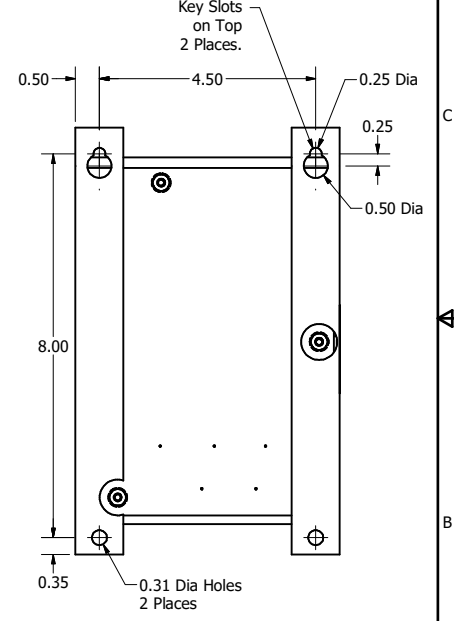
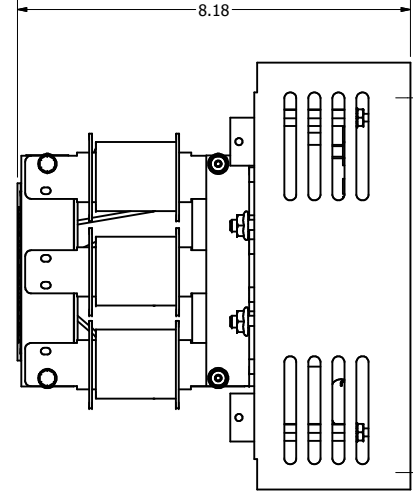
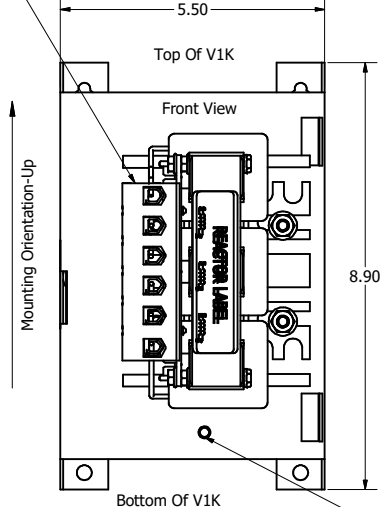
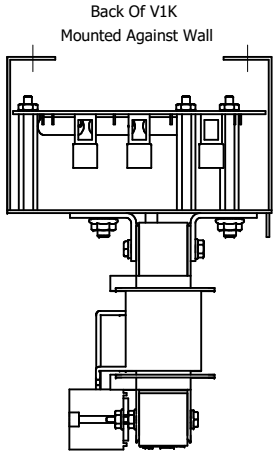
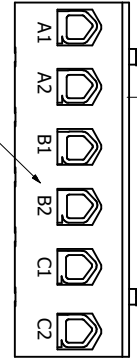
Note: Maintain Clearance of 3 Inches On All Sides To Other Equipment.

V1K Part Number	Max Voltage	Amps	Phase	Weight (LBS)
V1K16A00	600	16	3	12
V1K16A00EX	600	16	3	12
V1K18A00	600	18	3	12
V1K18A00EX	600	18	3	12
V1K21A00	600	21	3	12
V1K21A00EX	600	21	3	12
V1K25A00	600	25	3	12
V1K25A00EX	600	25	3	12
V1K27A00	600	27	3	12
V1K27A00EX	600	27	3	12



REACTOR AND BOARD ASSEMBLY CONNECTIONS

(Customer Connections) Markings On Terminal Block For Reference Only.



Customer Is Responsible For Installation to Meet All National And Local Electrical Codes. Material(s) Shall be RoHS Compliant

TCI, LLC CLAIMS PROPRIETARY RIGHTS IN THE MATERIAL HEREIN DISCLOSED. IT IS SUPPLIED WITHOUT PREJUDICE TO ANY PATENT RIGHTS OF TCI AND MAY NOT BE REPRODUCED OR USED TO MANUFACTURE ANYTHING SHOWN THEREIN WITHOUT WRITTEN PERMISSION FROM TCI.				TOLERANCES (EXCEPT AS NOTED) DECIMAL .XX ± .25 .XXX ± .10 FRACTIONAL ± 1/16 ANGULAR ± 1°		TCI W132 N10611 Grant Drive Germantown, WI 53022 V1K, Open 16 Amps to 27 Amps	
CG	4658 Rated To Max Voltage	03/04/19	JRN	DATE	4/26/17	REV	102316DG
FE	4030, Combine V1k Drawings	6/7/17	DSW	SCALE	TO FIT	REV	
NO	REVISION	DATE	BY			REV	SHT 1 OF 1