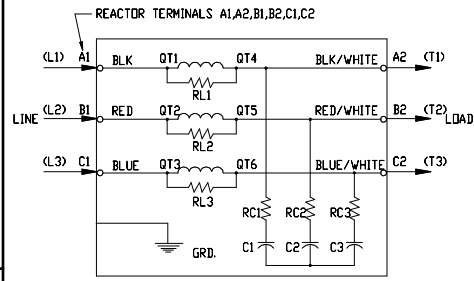


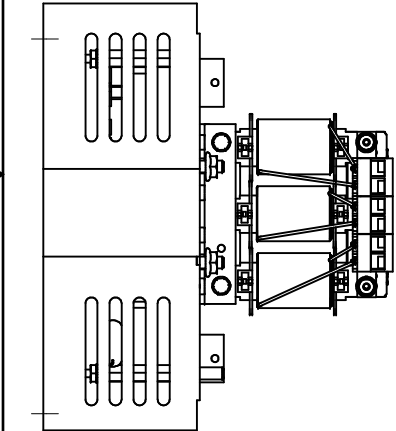
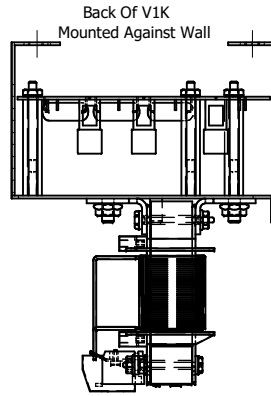
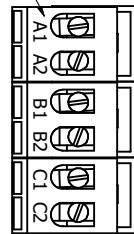
See V1K Installation Guide For Terminal Wire Size And Torque Information.

Note: Maintain Clearance of 3 Inches On All Sides To Other Equipment.

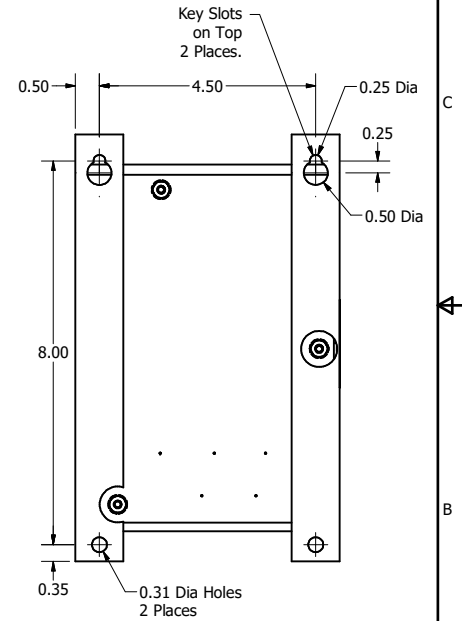
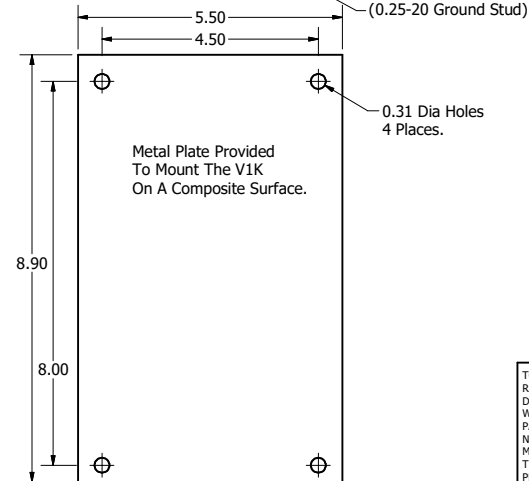
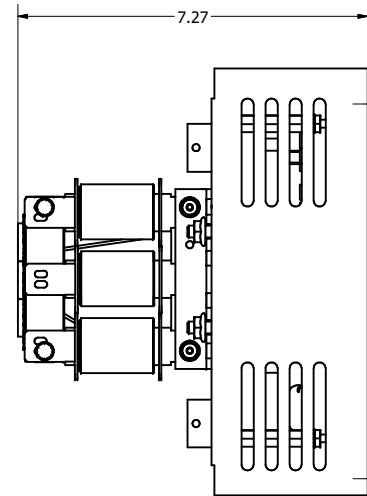
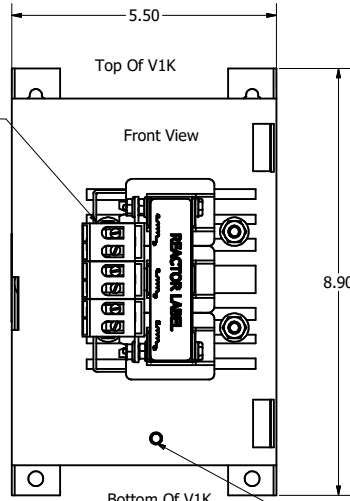


REACTOR AND BOARD ASSEMBLY CONNECTIONS

(Customer Connections) Markings On Terminal Block For Reference Only.



Mounting Orientation-Up



V1K Part Number	Max Voltage	Amps	Phase	Weight (LBS)
V1K2A00	600	2	3	8
V1K2A00EX	600	2	3	8
V1K3A00	600	3	3	8
V1K3A00EX	600	3	3	8
V1K4A00	600	4	3	8
V1K4A00EX	600	4	3	8
V1K6A00	600	6	3	8
V1K6A00EX	600	6	3	8
V1K8A00	600	8	3	8
V1K8A00EX	600	8	3	8
V1K12A00	600	12	3	8
V1K12A00EX	600	12	3	8

Customer Is Responsible For Installation to Meet All National And Local Electrical Codes. Material(s) Shall be RoHS Compliant

TCI, LLC CLAIMS PROPRIETARY RIGHTS IN THE MATERIAL HEREIN DISCLOSED. IT IS SUPPLIED WITHOUT PREJUDICE TO ANY PATENT RIGHTS OF TCI AND MAY NOT BE REPRODUCED OR USED TO MANUFACTURE ANYTHING SHOWN THEREIN WITHOUT WRITTEN PERMISSION FROM TCI.				TOLERANCES (EXCEPT AS NOTED) DECIMAL .XX ±.25 .XXX ±.10 FRACTIONAL ± 1/16 ANGULAR ± 1°		W132 N10611 Grant Drive Germantown, WI 53022 V1K, Open 2 Amps to 12 Amps DRN BY: DSW DATE: 4/26/17 SCALE: TO FIT 102310DG SHEET 1 OF 1	
F	4658 Rated To Max Voltage	03/04/19	JRN				
E	4030, Combine V1k Drawings	6/6/17	DSW				
NO	REVISION	DATE	BY				