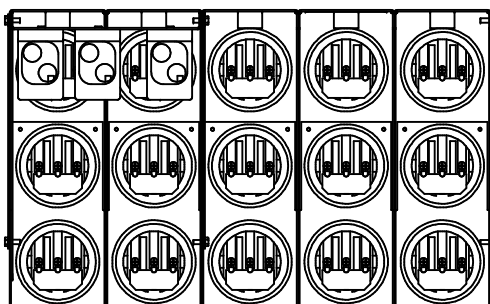
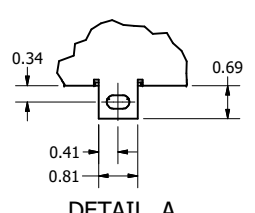
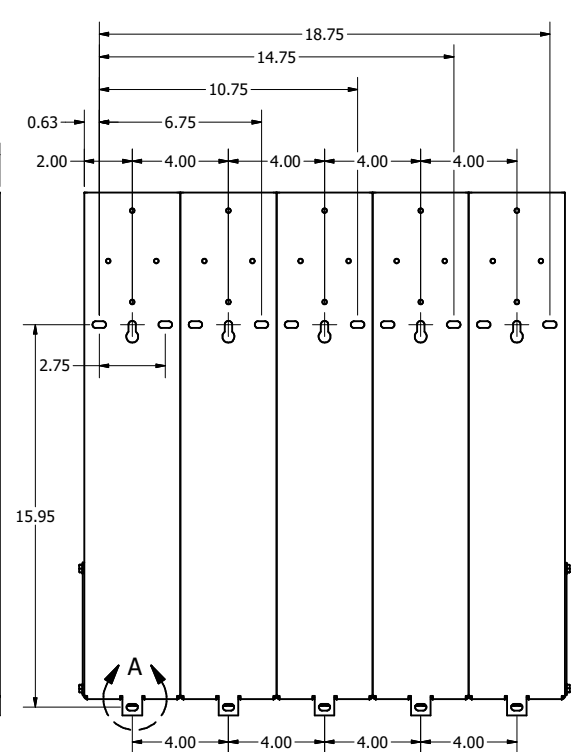
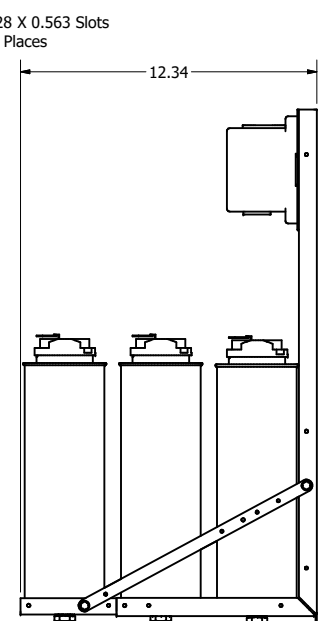
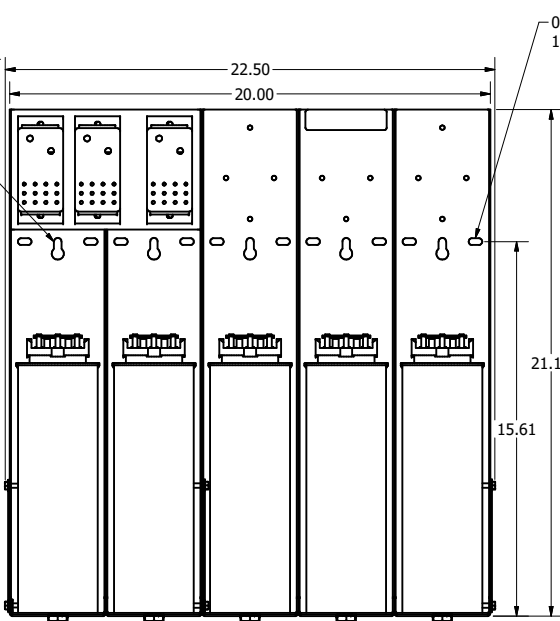
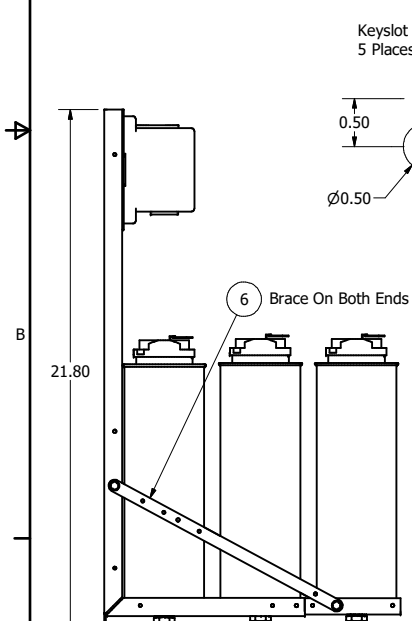
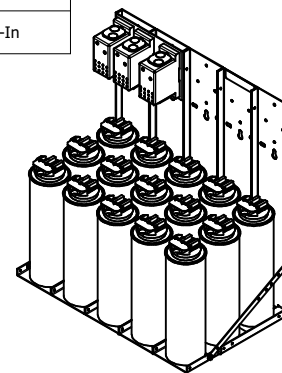


KPCUL300A60, 480V, 300kVar, 1000 HP
 Approx. Weight: 80 Lbs



Customer Input	
Wire Range	Tightening Torque
300kcmil - 4 Awg	275 Lb-In

Cap Connection	
Wire Range	Tightening Torque
4-6 Awg.	35 Lb-In
8 Awg.	25 Lb-In
10-14 Awg.	20 Lb-In



Note: 27908, Manual KPC Installation Guide
 MUST SHIP WITH EACH ASSEMBLY.

HOLE TOLERANCE ± .005
 Material(s) Shall be RoHS Compliant

THE INFORMATION AND DESIGNS CONTAINED IN THIS DRAWING ARE CONFIDENTIAL AND THE PROPRIETARY PROPERTY OF ALLIED MOTION TECHNOLOGIES INC. AND ITS SUBSIDIARIES. NEITHER THIS DESIGN NOR ANY INFORMATION CONTAINED IN THIS DRAWING MAY BE REPRODUCED OR DISCLOSED TO OTHERS WITHOUT THE EXPRESS WRITTEN CONSENT OF ALLIED MOTION TECHNOLOGIES INC. AND ITS SUBSIDIARIES.				TOLERANCES (EXCEPT AS NOTED) DECIMAL .XX ± .25 .XXX ± .10 FRACTIONAL ± 1/32 ANGULAR ± 1°		W132N10611 (Rev. 11/16) Germantown, WI 53022 © 2024 TCI, LLC An TCI Motion Company KPCUL300A60, 300 kVar, 1000 HP Panelized Caps	
NO	REVISION	DATE	BY	DRN BY	DATE	REVISED	109314
				SCALE:	To Fit	DATE	12/19/22